



Chipsmall Limited consists of a professional team with an average of over 10 year of expertise in the distribution of electronic components. Based in Hongkong, we have already established firm and mutual-benefit business relationships with customers from,Europe,America and south Asia,supplying obsolete and hard-to-find components to meet their specific needs.

With the principle of "Quality Parts,Customers Priority,Honest Operation,and Considerate Service",our business mainly focus on the distribution of electronic components. Line cards we deal with include Microchip,ALPS,ROHM,Xilinx,Pulse,ON,Everlight and Freescale. Main products comprise IC,Modules,Potentiometer,IC Socket,Relay,Connector.Our parts cover such applications as commercial,industrial, and automotives areas.

We are looking forward to setting up business relationship with you and hope to provide you with the best service and solution. Let us make a better world for our industry!



Contact us

Tel: +86-755-8981 8866 Fax: +86-755-8427 6832

Email & Skype: info@chipsmall.com Web: www.chipsmall.com

Address: A1208, Overseas Decoration Building, #122 Zhenhua RD., Futian, Shenzhen, China



MATERIALS AND FINISHES

BODY, CAP SEE TABLE
PLATED GOLD

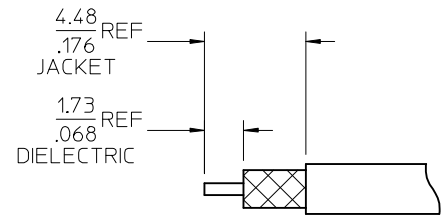
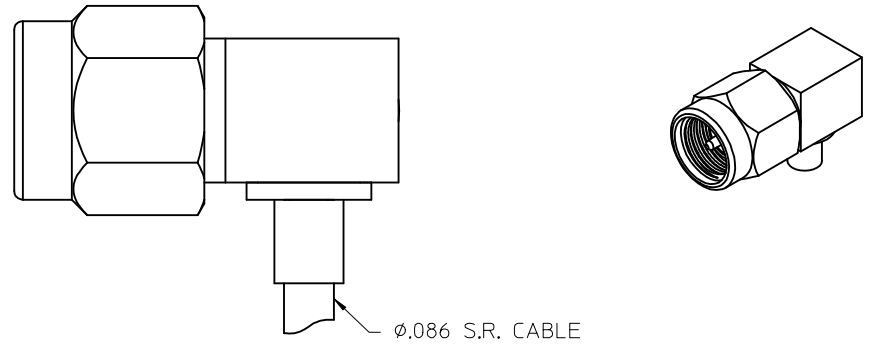
COUPLING NUT SEE TABLE
PLATED GOLD

CENTER CONTACT SEE TABLE
PLATED GOLD

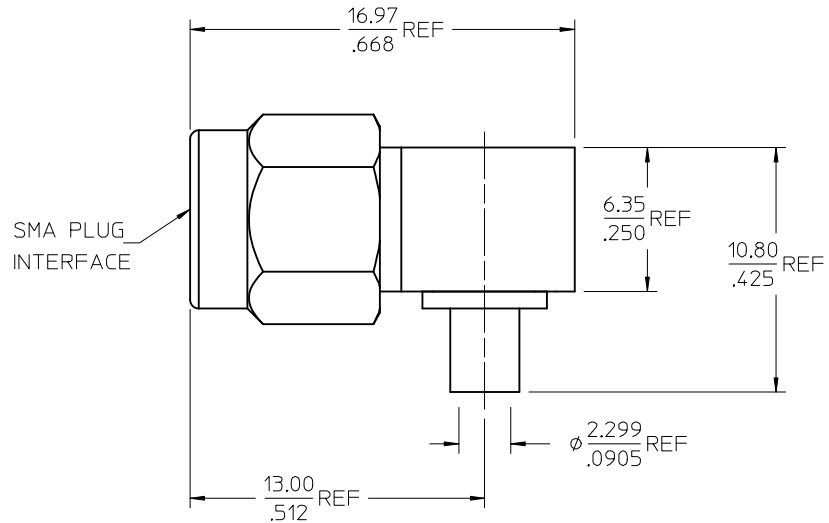
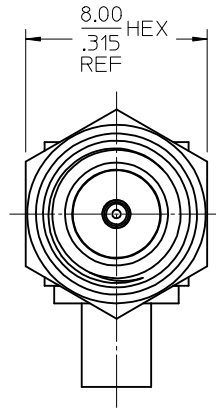
INSULATOR TEFLON

RETAINING RING BERYLLIUM COPPER

GASKET SILICONE RUBBER



RECOMMENDED STRIPPING DIMENSIONS
RG405 WITH JACKET SHOWN



73251-0654	BRASS	BRASS	BRASS	BRASS	BULK
73251-0653	BRASS	BRASS	BRASS	BRASS	SINGLE BAG
73251-0652	STAINLESS STEEL	BERYLLIUM COPPER	STAINLESS STEEL	STAINLESS STEEL	BULK
73251-0651	BRASS	BRASS	BRASS	BRASS	BULK
73251-0650	BRASS	BRASS	STAINLESS STEEL	BRASS	BULK
PART NO.	BODY	CONTACT	COUPLING NUT	CAP	PACKAGING

CHG: CORRECTED TYPO, STAINLESS WAS STAINLESS.	IEC NO: URF2013-0007 DRWN:ROBERTSON 2012/08/15 CHKD:SSS 2012/08/15 APPR:JWIENER 2012/08/15	QUALITY SYMBOLS ▽=0 ▽=0 ▽=0	GENERAL TOLERANCES (UNLESS SPECIFIED)		DIMENSION STYLE MM/IN	SCALE	DESIGN UNITS INCH	THIRD ANGLE PROJECTION																	
			<table border="1"> <tr> <th></th> <th>mm</th> <th>INCH</th> </tr> <tr> <td>4 PLACES</td> <td>± .004</td> <td>± .0015</td> </tr> <tr> <td>3 PLACES</td> <td>± .005</td> <td>± .002</td> </tr> <tr> <td>2 PLACES</td> <td>± .007</td> <td>± .0025</td> </tr> <tr> <td>1 PLACE</td> <td>± .010</td> <td>± .0035</td> </tr> <tr> <td>0 PLACE</td> <td>± .015</td> <td>± .005</td> </tr> </table>			mm	INCH	4 PLACES	± .004	± .0015	3 PLACES	± .005	± .002	2 PLACES	± .007	± .0025	1 PLACE	± .010	± .0035	0 PLACE	± .015	± .005	DRAWN BY TEF	DATE 2002/04/01	TITLE SMA PLUG, R/A, SR .086 50 OHMS, EWR-1632 SMA-PC/RA
				mm	INCH																				
			4 PLACES	± .004	± .0015																				
3 PLACES	± .005	± .002																							
2 PLACES	± .007	± .0025																							
1 PLACE	± .010	± .0035																							
0 PLACE	± .015	± .005																							
DRAFT WHERE APPLICABLE MUST REMAIN WITHIN DIMENSIONS		APPROVED BY GMH	DATE 2002/04/01	molex																					
ANGULAR ± 2 ° MATERIAL NO. SEE TABLE		DOCUMENT NO. SD-73251-065		SHEET NO. 1 OF 1																					