



Chipsmall Limited consists of a professional team with an average of over 10 year of expertise in the distribution of electronic components. Based in Hongkong, we have already established firm and mutual-benefit business relationships with customers from,Europe,America and south Asia,supplying obsolete and hard-to-find components to meet their specific needs.

With the principle of “Quality Parts,Customers Priority,Honest Operation,and Considerate Service”,our business mainly focus on the distribution of electronic components. Line cards we deal with include Microchip,ALPS,ROHM,Xilinx,Pulse,ON,Everlight and Freescale. Main products comprise IC,Modules,Potentiometer,IC Socket,Relay,Connector.Our parts cover such applications as commercial,industrial, and automotives areas.

We are looking forward to setting up business relationship with you and hope to provide you with the best service and solution. Let us make a better world for our industry!



## Contact us

Tel: +86-755-8981 8866 Fax: +86-755-8427 6832

Email & Skype: info@chipsmall.com Web: www.chipsmall.com

Address: A1208, Overseas Decoration Building, #122 Zhenhua RD., Futian, Shenzhen, China



MATERIALS & FINISHES

BODY: BRASS  
PLATED GOLD

CONTACT: BERYLLIUM COPPER  
PLATED GOLD

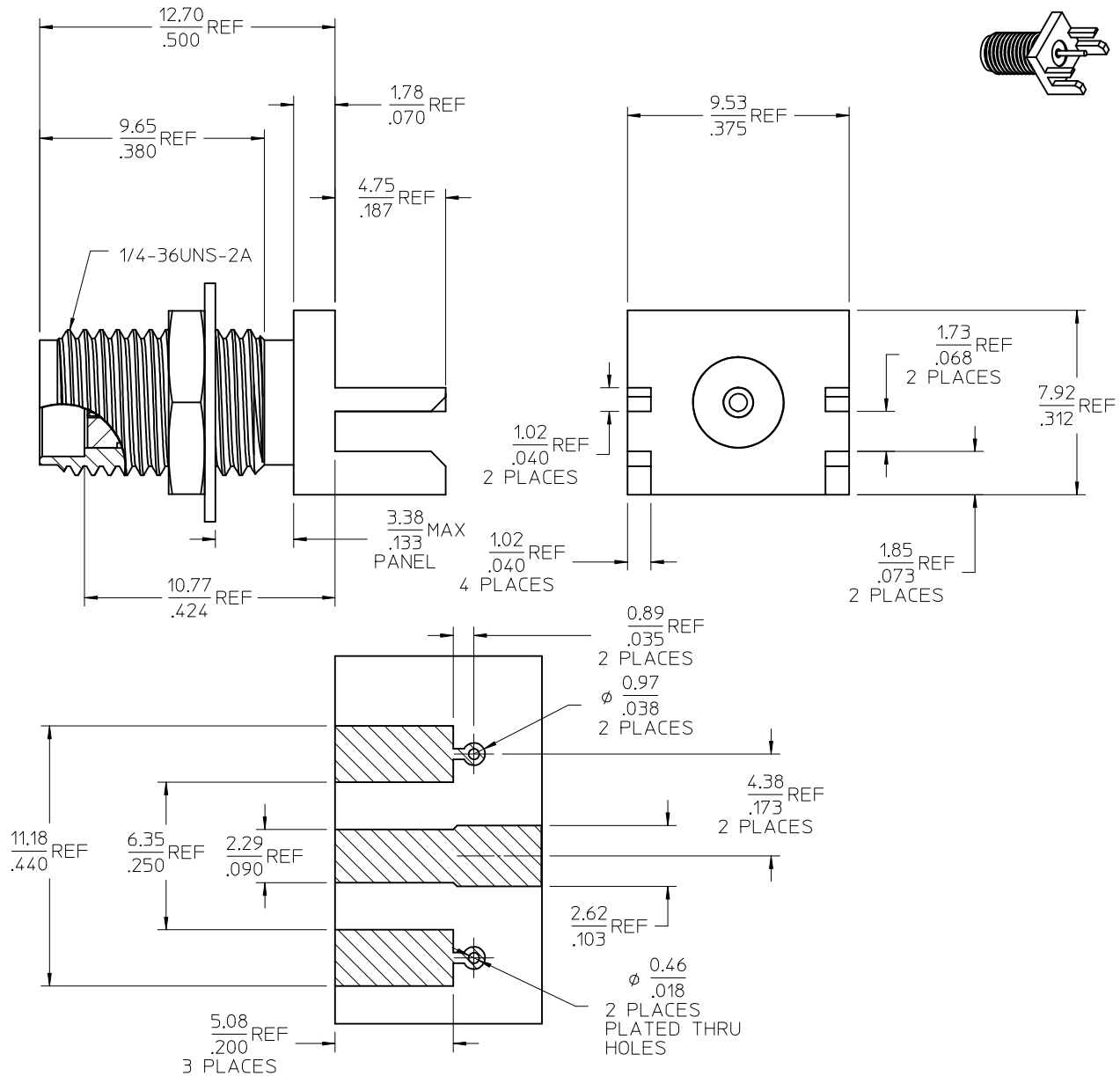
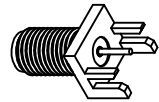
INSULATOR: TEFLON

JAM NUT: BRASS  
PLATED GOLD

LOCK WASHER: PHOSPHOR BRONZE  
PLATED GOLD

HARDWARE:

JAM NUT: 7.877/310 HEX X 1.557/061  
LOCK WASHER:  $\phi$ 10.267/404 X  $\phi$ 6.657/262 X .467/018



RECOMMENDED PCB LAYOUT  
BOARD THICKNESS 1.577/062

PART # 73251-1290

MIL-STD-348A, FIG. 310.2	INTERFACE
SPECIFICATION	DESCRIPTION

CHG: ADDED .424 DIM AND THD	DESCRIPTION
EC NO: URF2015-0141	2014/10/24
DRWN:JLE02	2014/10/24
CHKD:SSS	2014/10/27
APPR:WSP/INK	2014/10/27
REV	A2

QUALITY SYMBOLS	$\nabla=0$	$\nabla=0$
-----------------	------------	------------

GENERAL TOLERANCES (UNLESS SPECIFIED)
4 PLACES $\pm$ --- $\pm$ ---
3 PLACES $\pm$ --- $\pm$ ---
2 PLACES $\pm$ --- $\pm$ ---
1 PLACE $\pm$ --- $\pm$ ---
ANGULAR $\pm$ 2 °
DRAFT WHERE APPLICABLE MUST REMAIN WITHIN DIMENSIONS

DIMENSION STYLE	MM/IN
DRAWN BY	SSS
DATE	2000/08/00
CHECKED BY	SSS
DATE	2000/08/00
APPROVED BY	GMH
DATE	2000/08/00
MATERIAL NO.	732511290
SIZE	C

SCALE	DESIGN UNITS	THIRD ANGLE PROJECTION
	METRIC	
TITLE		
SMA, JACK EDGEMOUNT FOR .062 PCB SMA-J/PCB, EWR-2864		
MOLEX INCORPORATED		
DOCUMENT NO.	SD-73251-129	SHEET NO.
		1 OF 1
THIS DRAWING CONTAINS INFORMATION THAT IS PROPRIETARY TO MOLEX INCORPORATED AND SHOULD NOT BE USED WITHOUT WRITTEN PERMISSION		