



Chipsmall Limited consists of a professional team with an average of over 10 year of expertise in the distribution of electronic components. Based in Hongkong, we have already established firm and mutual-benefit business relationships with customers from,Europe,America and south Asia,supplying obsolete and hard-to-find components to meet their specific needs.

With the principle of “Quality Parts,Customers Priority,Honest Operation,and Considerate Service”,our business mainly focus on the distribution of electronic components. Line cards we deal with include Microchip,ALPS,ROHM,Xilinx,Pulse,ON,Everlight and Freescale. Main products comprise IC,Modules,Potentiometer,IC Socket,Relay,Connector.Our parts cover such applications as commercial,industrial, and automotives areas.

We are looking forward to setting up business relationship with you and hope to provide you with the best service and solution. Let us make a better world for our industry!



## Contact us

Tel: +86-755-8981 8866 Fax: +86-755-8427 6832

Email & Skype: info@chipsmall.com Web: www.chipsmall.com

Address: A1208, Overseas Decoration Building, #122 Zhenhua RD., Futian, Shenzhen, China



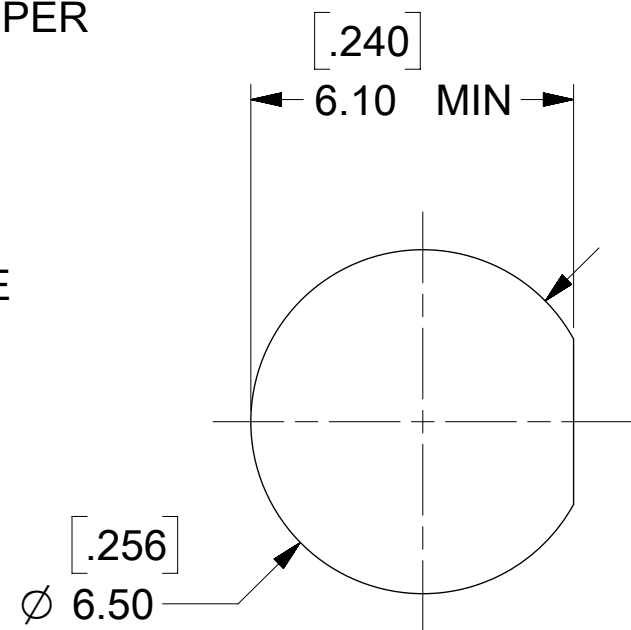
MATERIALS AND FINISHES:

BODY, JAM NUT: BRASS  
FINISH: SEE TABLE

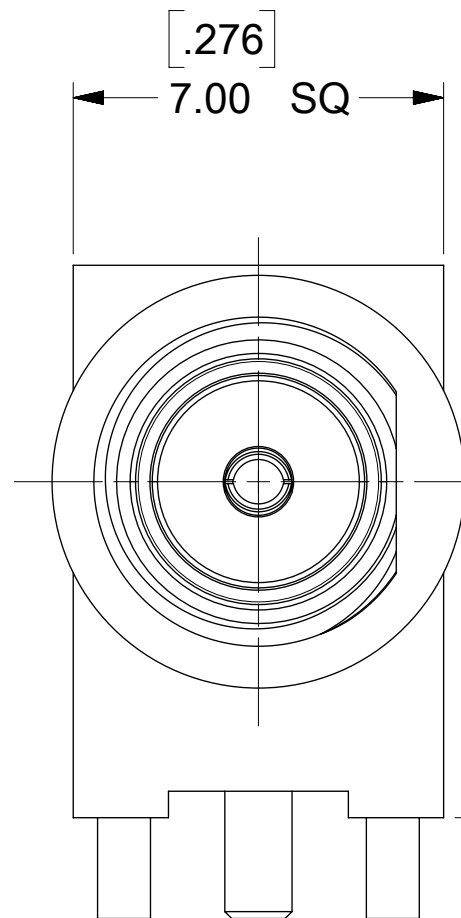
CENTER CONTACT: BERYLLIUM COPPER  
PLATED GOLD

INSULATOR: TEFLON

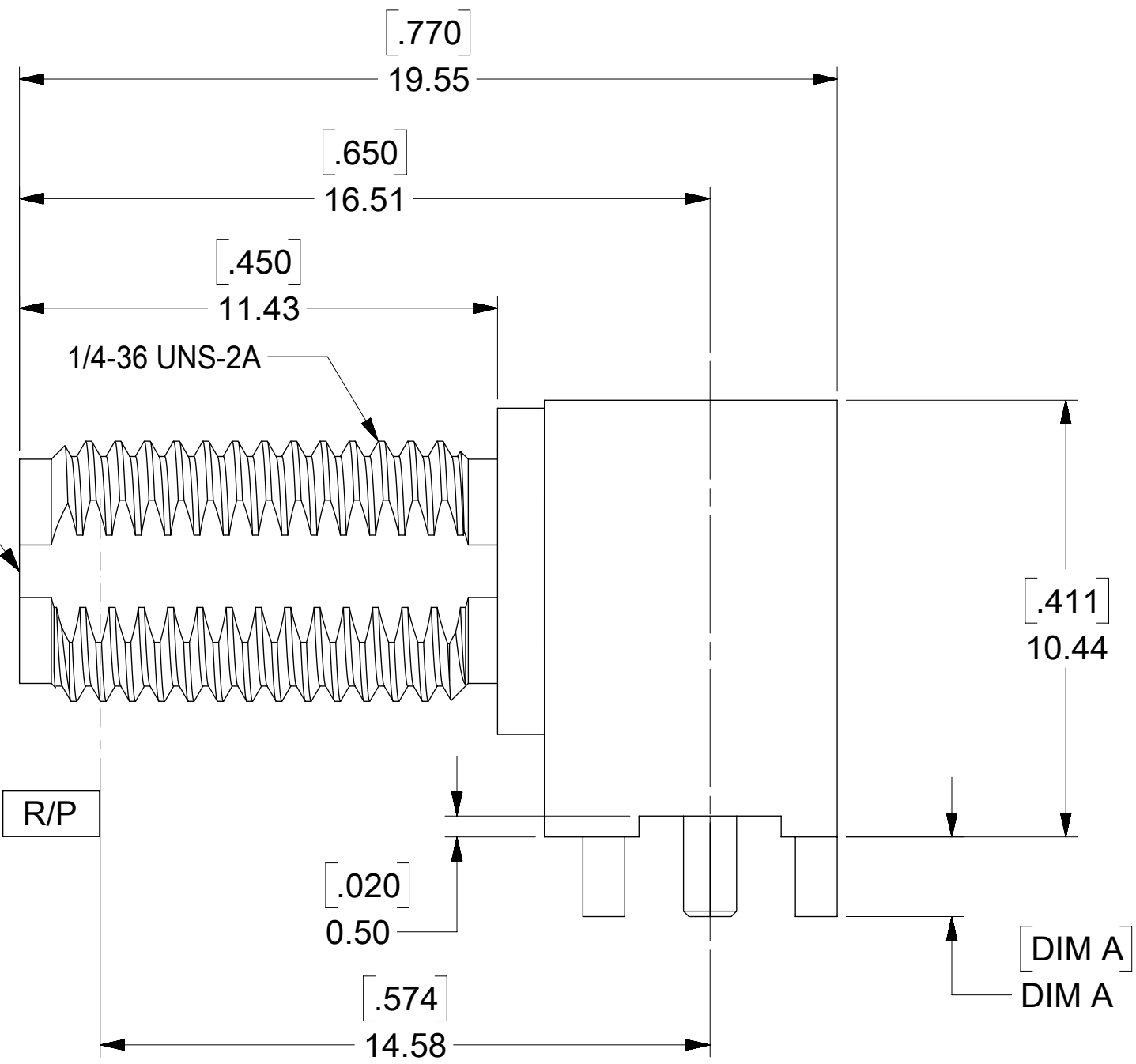
LOCK WASHER: PHOSPHOR BRONZE  
FINISH: SEE TABLE



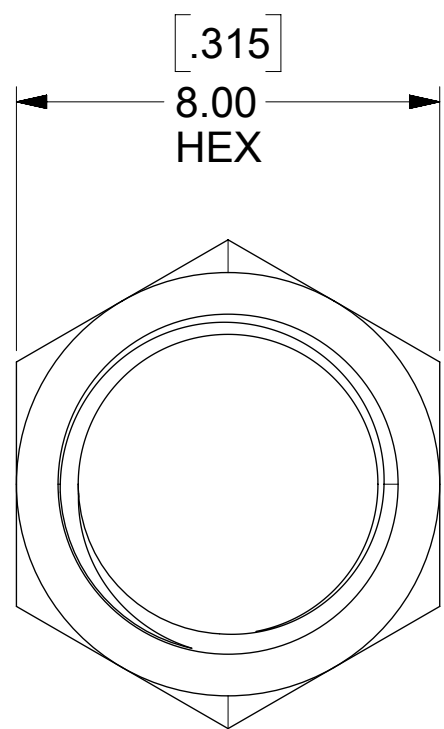
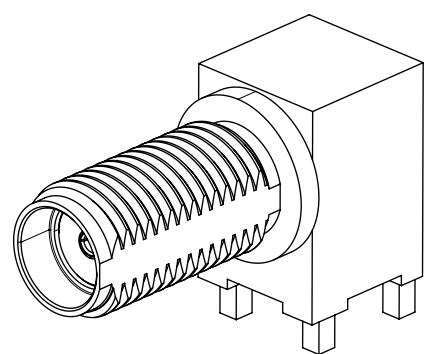
PANEL CUTOUT  
3.42 / .135 MAX  
THICKNESS



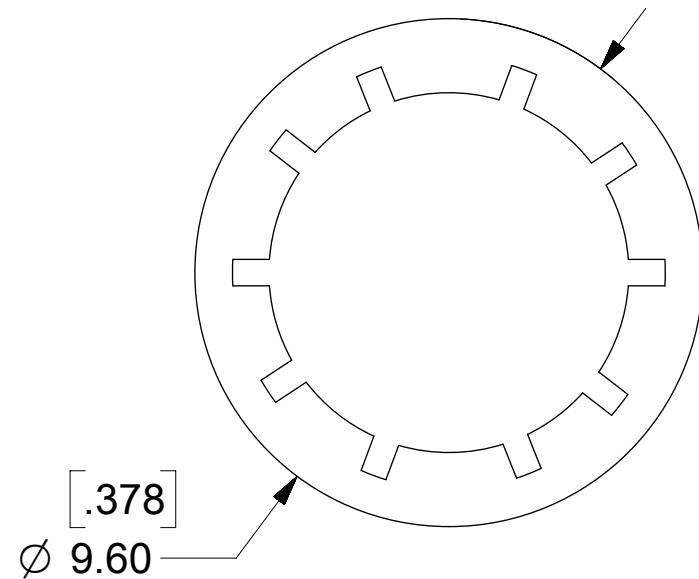
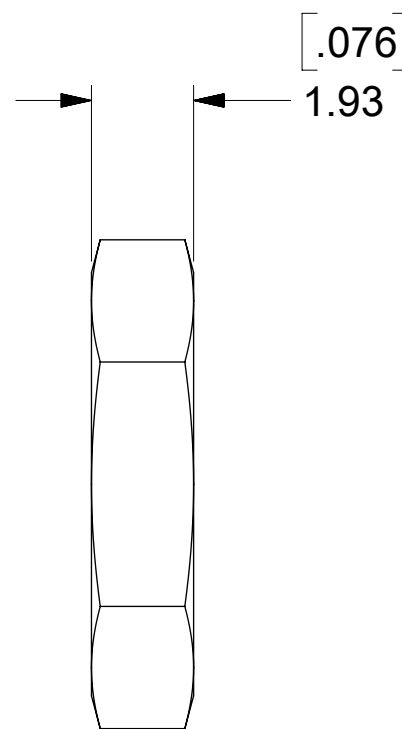
SMA JACK  
INTERFACE



DIM A  
DIM A



JAM NUT



LOCK WASHER

SD-73251-496 IS CONTINUATION FOR SD-73251-220

PART NO.	JAM NUT QTY	LOCK WASHER QTY	MM / IN	PLATING (BODY, NUT, LOCKWASHER) PACKAGING
73251-4963	NOT INCLUDED	NOT INCLUDED	2.79 / .110	GOLD / STANDARD TRAY
73251-4962	1	NOT INCLUDED	2.79 / .110	NICKEL PLATED/ STANDARD TRAY
73251-4961	2	1	3.94 / .155	GOLD FLASH / STANDARD TRAY
73251-4960	1	1	1.91 / .075	GOLD FLASH / STANDARD TRAY
	INCLUDED	INCLUDED	DIM A	

PS-89675-3460	PRODUCT SPECIFICATION
MIL-STD-348A, FIG. 310.2	INTERFACE
SPECIFICATION	DESCRIPTION

THIS DRAWING CONTAINS INFORMATION THAT IS PROPRIETARY TO MOLEX ELECTRONIC TECHNOLOGIES, LLC AND SHOULD NOT BE USED WITHOUT WRITTEN PERMISSION

PDR17022392 EC NO: 113593 DRWN: JSU18 CHKD: YCHENG REV: APPR:	2017/02/15	2017/02/21	GENERAL TOLERANCES (UNLESS SPECIFIED)	DIMENSION UNITS	SCALE				
			ANGULAR TOL ± °	MM	1:1				
			4 PLACES ±	DRWN BY	DATE		SMA JACK RA BLKHD RM PCB TH SMA-J/RA/PCB, EWR-2144		
			3 PLACES ±	JLEE02	2014/03/28				
		2 PLACES ±	CHKD BY	DATE	PRODUCT CUSTOMER DRAWING				
		1 PLACE ±	WSPINK	2014/03/28					
		0 PLACES ±	APPR BY	DATE	SERIES	MATERIAL NUMBER	CUSTOMER		
			DRAFT WHERE APPLICABLE MUST REMAIN WITHIN DIMENSIONS	DRAWING SIZE	THIRD ANGLE PROJECTION	73251	GENERAL MARKET		
				C		DOCUMENT NUMBER	DOC TYPE	DOC PART	SHEET NUMBER
						SD-73251-496	PSD	000	1 OF 1

B3	BASE ON 73251-2201 TO ADD NEW PART NUMBER TO REMOVE LOCK WASHER AND JAM NUT
REVISION	DESCRIPTION