



Chipsmall Limited consists of a professional team with an average of over 10 year of expertise in the distribution of electronic components. Based in Hongkong, we have already established firm and mutual-benefit business relationships with customers from,Europe,America and south Asia,supplying obsolete and hard-to-find components to meet their specific needs.

With the principle of “Quality Parts,Customers Priority,Honest Operation,and Considerate Service”,our business mainly focus on the distribution of electronic components. Line cards we deal with include Microchip,ALPS,ROHM,Xilinx,Pulse,ON,Everlight and Freescale. Main products comprise IC,Modules,Potentiometer,IC Socket,Relay,Connector.Our parts cover such applications as commercial,industrial, and automotives areas.

We are looking forward to setting up business relationship with you and hope to provide you with the best service and solution. Let us make a better world for our industry!



## Contact us

Tel: +86-755-8981 8866 Fax: +86-755-8427 6832

Email & Skype: info@chipsmall.com Web: www.chipsmall.com

Address: A1208, Overseas Decoration Building, #122 Zhenhua RD., Futian, Shenzhen, China

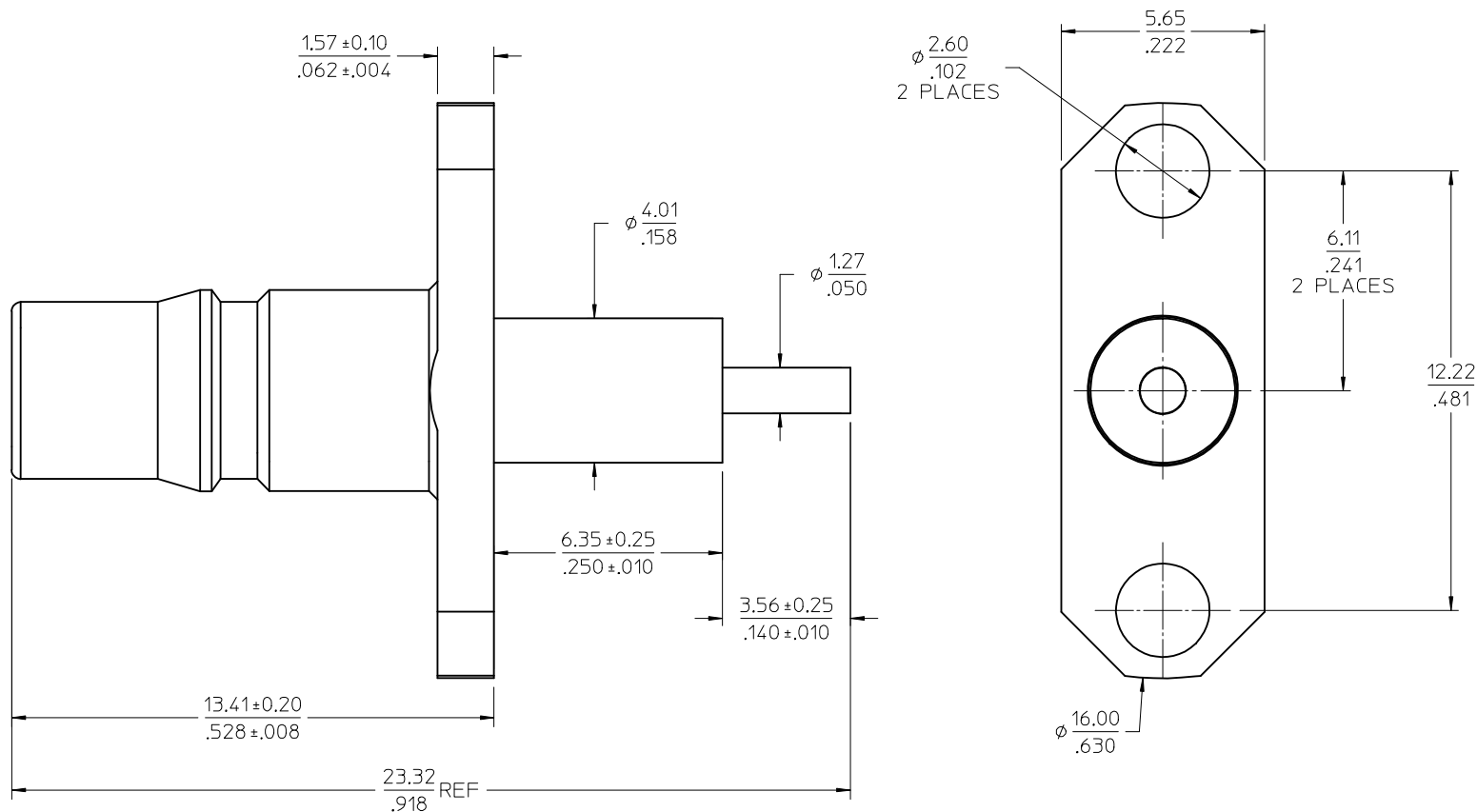
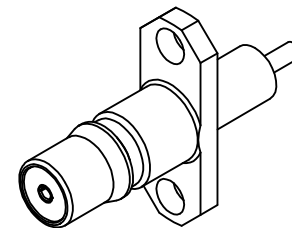


MATERIALS AND FINISHES

BODY BRASS  
PLATED GOLD OVER NICKEL PHOSPHOR

CENTER CONTACT BERYLLIUM COPPER  
PLATED GOLD OVER NICKEL

INSULATOR TEFLON



73254-0431	ONE PER BAG
73254-0430	TRAY
PART NO.	PACKAGING

PS-89675-1330	QMA
SPECIFICATION	DESCRIPTION

CHG: UPDATE PACKAGING FOR 73254-0430 PER RF15-E219	EC NO: URF2015-0667 2015/05/27	DRW: WRYEH	CHKD:	APPR: YCHENG	2015/05/29
DESCRIPTION	REV	A3			

QUALITY SYMBOLS	GENERAL TOLERANCES (UNLESS SPECIFIED)
▽=0	mm INCH
▽=0	4 PLACES ± --- ± ---
▽=0	3 PLACES ± --- ± ---
▽=0	2 PLACES ± --- ± ---
	1 PLACE ± --- ± ---
	0 PLACE ± --- ± ---
	ANGULAR ± 2 °
	DRAFT WHERE APPLICABLE MUST REMAIN WITHIN DIMENSIONS

DIMENSION STYLE	SCALE	DESIGN UNITS	THIRD ANGLE PROJECTION
MM/IN	10:1	METRIC	
DRAWN BY	DATE	TITLE	
JDW	2009/11/18	QMA JACK, STRAIGHT 2 HOLE FLANGE RECEPTACLE EWR-24255, QMA-JR	
CHECKED BY	DATE	molex	
SSS	2009/11/18		
APPROVED BY	DATE	MATERIAL NO.	DOCUMENT NO.
JDW	2009/11/18	SEE TABLE	SD-73254-043
SIZE		THIS DRAWING CONTAINS INFORMATION THAT IS PROPRIETARY TO MOLEX INCORPORATED AND SHOULD NOT BE USED WITHOUT WRITTEN PERMISSION	
C			

SHEET NO.	1 OF 1
-----------	--------