



Chipsmall Limited consists of a professional team with an average of over 10 year of expertise in the distribution of electronic components. Based in Hongkong, we have already established firm and mutual-benefit business relationships with customers from,Europe,America and south Asia,supplying obsolete and hard-to-find components to meet their specific needs.

With the principle of “Quality Parts,Customers Priority,Honest Operation,and Considerate Service”,our business mainly focus on the distribution of electronic components. Line cards we deal with include Microchip,ALPS,ROHM,Xilinx,Pulse,ON,Everlight and Freescale. Main products comprise IC,Modules,Potentiometer,IC Socket,Relay,Connector.Our parts cover such applications as commercial,industrial, and automotives areas.

We are looking forward to setting up business relationship with you and hope to provide you with the best service and solution. Let us make a better world for our industry!



Contact us

Tel: +86-755-8981 8866 Fax: +86-755-8427 6832

Email & Skype: info@chipsmall.com Web: www.chipsmall.com

Address: A1208, Overseas Decoration Building, #122 Zhenhua RD., Futian, Shenzhen, China



MATERIALS AND FINISHES

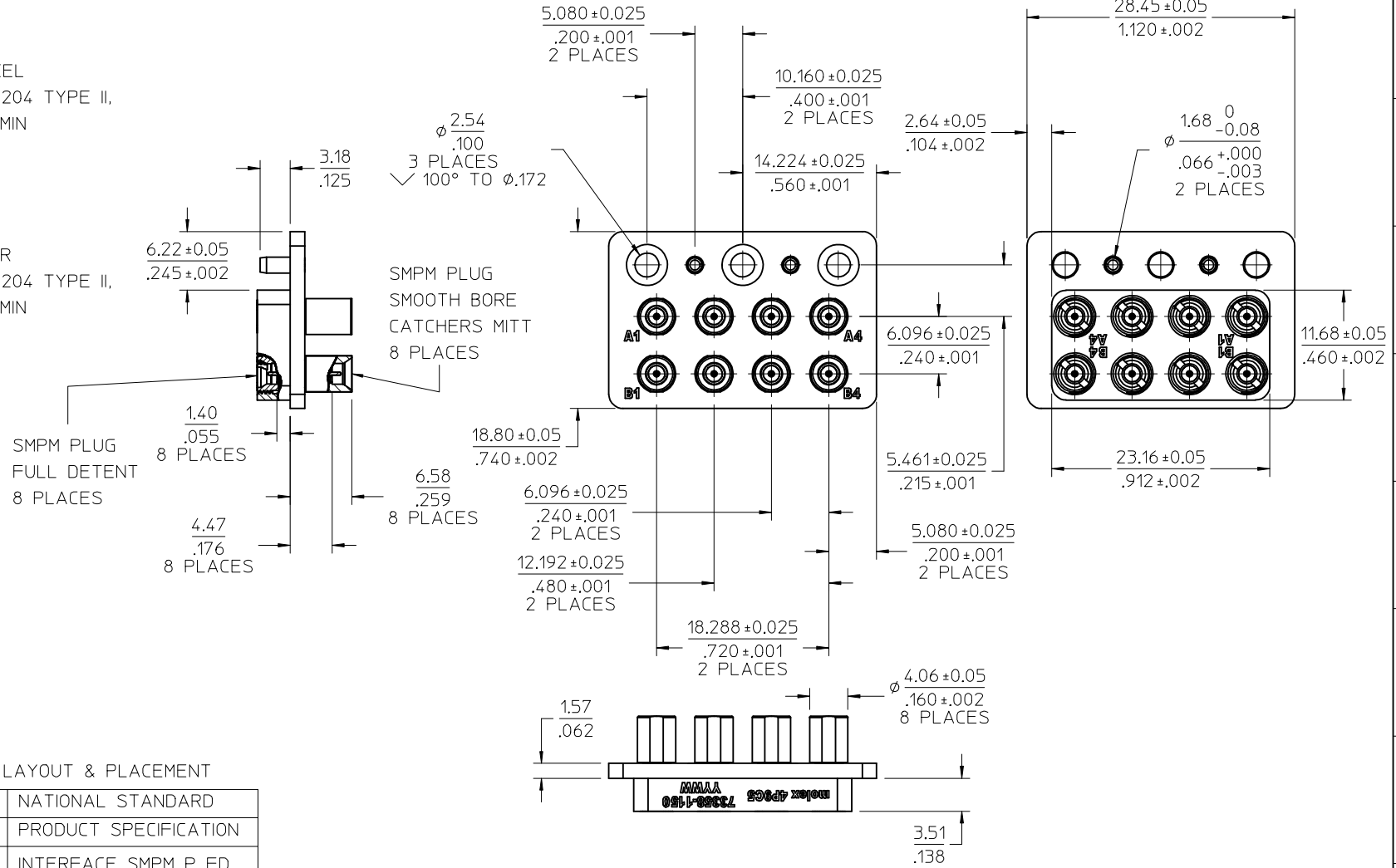
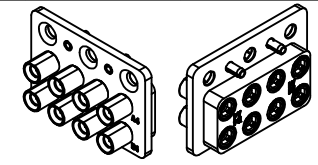
HOUSING, SMP DETENT SHROUD: STAINLESS STEEL
PASSIVATED

ALIGNMENT PINS: STAINLESS STEEL
PASSIVATED

BODY SMPM: STAINLESS STEEL
PLATED GOLD PER MIL-G-45204 TYPE II,
GRADE C, CLASS 1 (50 μ-in MIN
OVER NICKEL 50 μ-in MIN

INSULATORS: PTFE

CONTACT: BERYLLIUM COPPER
PLATED GOLD PER MIL-G-45204 TYPE II,
GRADE C, CLASS 1 (50 μ-in MIN
OVER NICKEL 50 μ-in MIN



PART # 73358-1150

SEE PS-89675-470 FOR PCB LAYOUT & PLACEMENT

ANSI/VITA 67.2	NATIONAL STANDARD
PS-89675-470	PRODUCT SPECIFICATION
MIL-STD-348A, FIG. 328.2	INTERFACE SMPM P FD
SPECIFICATION	DESCRIPTION

CHG: SHROUD BORE CHANGED FROM Ø.087 TO Ø.0875 EC NO: URF2017-0372 DRAWN:PSWAM102 2017/05/03 CHKD:BBB 2017/05/03 APPR:AROBERTSON 2017/05/12	QUALITY SYMBOLS $\nabla = 0$ $\nabla = 0$ $\nabla = 0$	GENERAL TOLERANCES (UNLESS SPECIFIED) <table border="1"> <tr> <th></th> <th>mm</th> <th>INCH</th> </tr> <tr> <td>4 PLACES</td> <td>± ---</td> <td>± ---</td> </tr> <tr> <td>3 PLACES</td> <td>± ---</td> <td>± ---</td> </tr> <tr> <td>2 PLACES</td> <td>± ---</td> <td>± ---</td> </tr> <tr> <td>1 PLACE</td> <td>± ---</td> <td>± ---</td> </tr> <tr> <td>0 PLACE</td> <td>± ---</td> <td>± ---</td> </tr> </table>		mm	INCH	4 PLACES	± ---	± ---	3 PLACES	± ---	± ---	2 PLACES	± ---	± ---	1 PLACE	± ---	± ---	0 PLACE	± ---	± ---	DIMENSION STYLE MM/IN DRAWN BY: AROBERTSON DATE: 2013/10/04 CHECKED BY: SSS DATE: 2013/10/04 APPROVED BY: JW IENER DATE: 2013/10/09	SCALE INCH DESIGN UNITS INCH THIRD ANGLE PROJECTION	TITLE VITA 67.2 8 PORT MODULE MID PLANE SMPM PLUG VITA-SMPM, EWR-10029-B molex	DOCUMENT NO. SD-73358-115 SHEET NO. 1 OF 1
				mm	INCH																			
4 PLACES	± ---	± ---																						
3 PLACES	± ---	± ---																						
2 PLACES	± ---	± ---																						
1 PLACE	± ---	± ---																						
0 PLACE	± ---	± ---																						
DRAFT WHERE APPLICABLE MUST REMAIN WITHIN DIMENSIONS	MATERIAL NO. 733581150																							
THIS DRAWING CONTAINS INFORMATION THAT IS PROPRIETARY TO MOLEX INCORPORATED AND SHOULD NOT BE USED WITHOUT WRITTEN PERMISSION																								