



Chipsmall Limited consists of a professional team with an average of over 10 year of expertise in the distribution of electronic components. Based in Hongkong, we have already established firm and mutual-benefit business relationships with customers from,Europe,America and south Asia,supplying obsolete and hard-to-find components to meet their specific needs.

With the principle of "Quality Parts,Customers Priority,Honest Operation,and Considerate Service",our business mainly focus on the distribution of electronic components. Line cards we deal with include Microchip,ALPS,ROHM,Xilinx,Pulse,ON,Everlight and Freescale. Main products comprise IC,Modules,Potentiometer,IC Socket,Relay,Connector.Our parts cover such applications as commercial,industrial, and automotives areas.

We are looking forward to setting up business relationship with you and hope to provide you with the best service and solution. Let us make a better world for our industry!



## Contact us

Tel: +86-755-8981 8866 Fax: +86-755-8427 6832

Email & Skype: info@chipsmall.com Web: www.chipsmall.com

Address: A1208, Overseas Decoration Building, #122 Zhenhua RD., Futian, Shenzhen, China



MATERIALS AND FINISHES

BLOCK: ALUMINUM 6061  
 PLATED ELECTROLESS NICKEL

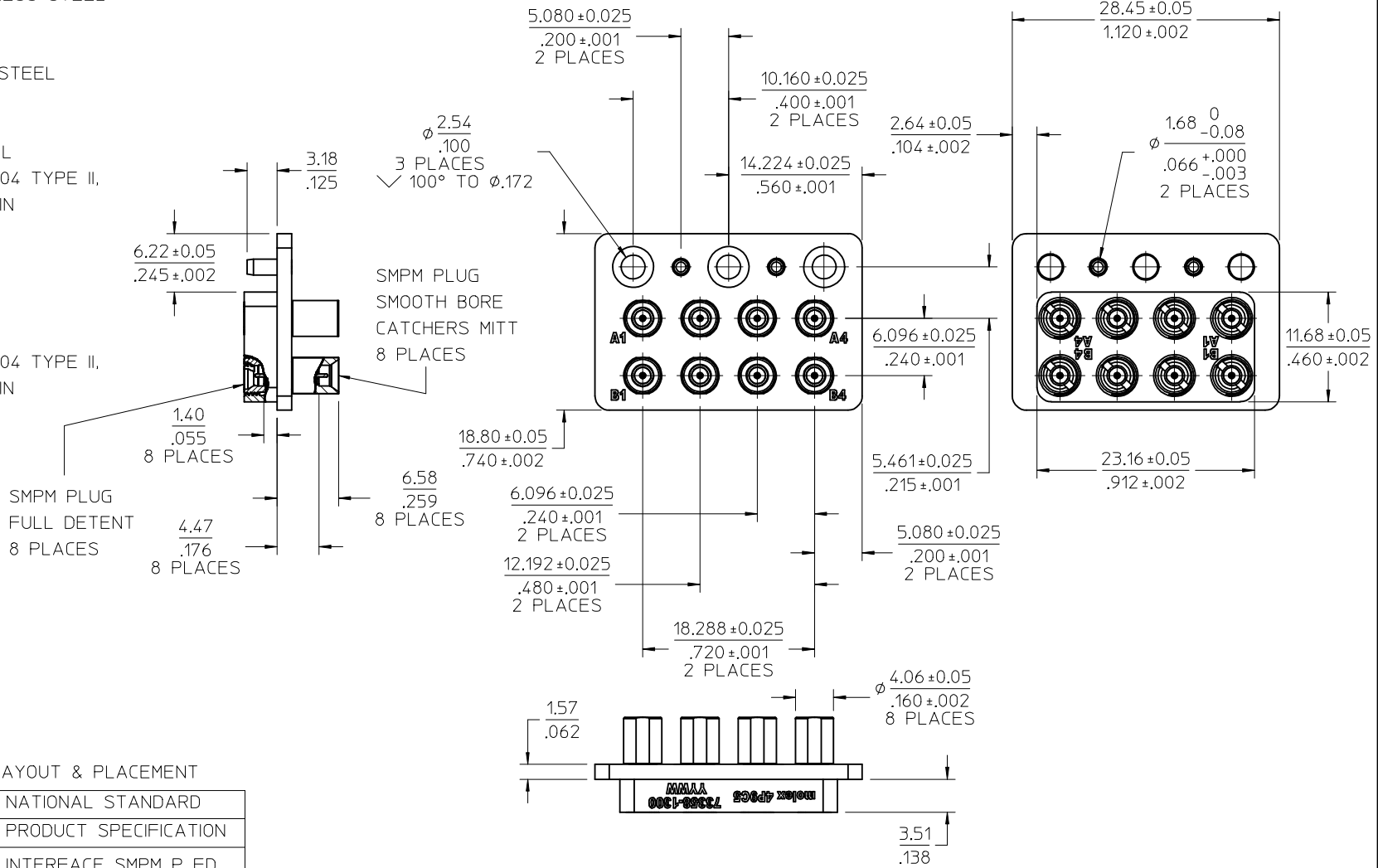
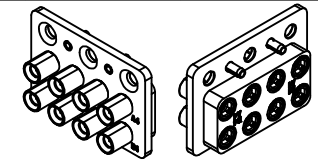
SMP DETENT SHROUD: STAINLESS STEEL  
 PASSIVATED

ALIGNMENT PINS: STAINLESS STEEL  
 PASSIVATED

BODY SMPM: STAINLESS STEEL  
 PLATED GOLD PER MIL-G-45204 TYPE II,  
 GRADE C, CLASS 1 (50 μ-in MIN  
 OVER NICKEL 50 μ-in MIN

INSULATORS: PTFE

CONTACT: BERYLLIUM COPPER  
 PLATED GOLD PER MIL-G-45204 TYPE II,  
 GRADE C, CLASS 1 (50 μ-in MIN  
 OVER NICKEL 50 μ-in MIN



PART # 73358-1300

SEE PS-89675-470 FOR PCB LAYOUT & PLACEMENT

ANSI/VITA 67.2	NATIONAL STANDARD
PS-89675-470	PRODUCT SPECIFICATION
MIL-STD-348A, FIG. 328.2	INTERFACE SMPM P FD
SPECIFICATION	DESCRIPTION

CHG: SHROUD BORE CHANGED FROM $\phi 0.087$ TO $\phi 0.0875$ EC NO: URF2017-0372 DRW:PSWAM102 2017/05/03 CHKD:BBB 2017/05/03 APPR:AROBERTSON 2017/05/12	QUALITY SYMBOLS $\nabla = 0$ $\nabla = 0$ $\nabla = 0$	GENERAL TOLERANCES (UNLESS SPECIFIED)		DIMENSION STYLE MM/IN		SCALE	DESIGN UNITS INCH	THIRD ANGLE PROJECTION
		4 PLACES $\pm$ --- $\pm$ --- 3 PLACES $\pm$ --- $\pm$ --- 2 PLACES $\pm$ --- $\pm$ --- 1 PLACE $\pm$ --- $\pm$ --- 0 PLACE $\pm$ --- $\pm$ ---	mm INCH	DRAWN BY AROBERTSON	DATE 2014/01/25	TITLE VITA 67.2 8 PORT MODULE MID PLANE SMPM PLUG SMPM-VITA, EWR-10029-B		DOCUMENT NO. SD-73358-130
DRAFT WHERE APPLICABLE MUST REMAIN WITHIN DIMENSIONS		MATERIAL NO. 733581300		SIZE C		THIS DRAWING CONTAINS INFORMATION THAT IS PROPRIETARY TO MOLEX INCORPORATED AND SHOULD NOT BE USED WITHOUT WRITTEN PERMISSION		