



Chipsmall Limited consists of a professional team with an average of over 10 year of expertise in the distribution of electronic components. Based in Hongkong, we have already established firm and mutual-benefit business relationships with customers from,Europe,America and south Asia,supplying obsolete and hard-to-find components to meet their specific needs.

With the principle of “Quality Parts,Customers Priority,Honest Operation,and Considerate Service”,our business mainly focus on the distribution of electronic components. Line cards we deal with include Microchip,ALPS,ROHM,Xilinx,Pulse,ON,Everlight and Freescale. Main products comprise IC,Modules,Potentiometer,IC Socket,Relay,Connector.Our parts cover such applications as commercial,industrial, and automotives areas.

We are looking forward to setting up business relationship with you and hope to provide you with the best service and solution. Let us make a better world for our industry!



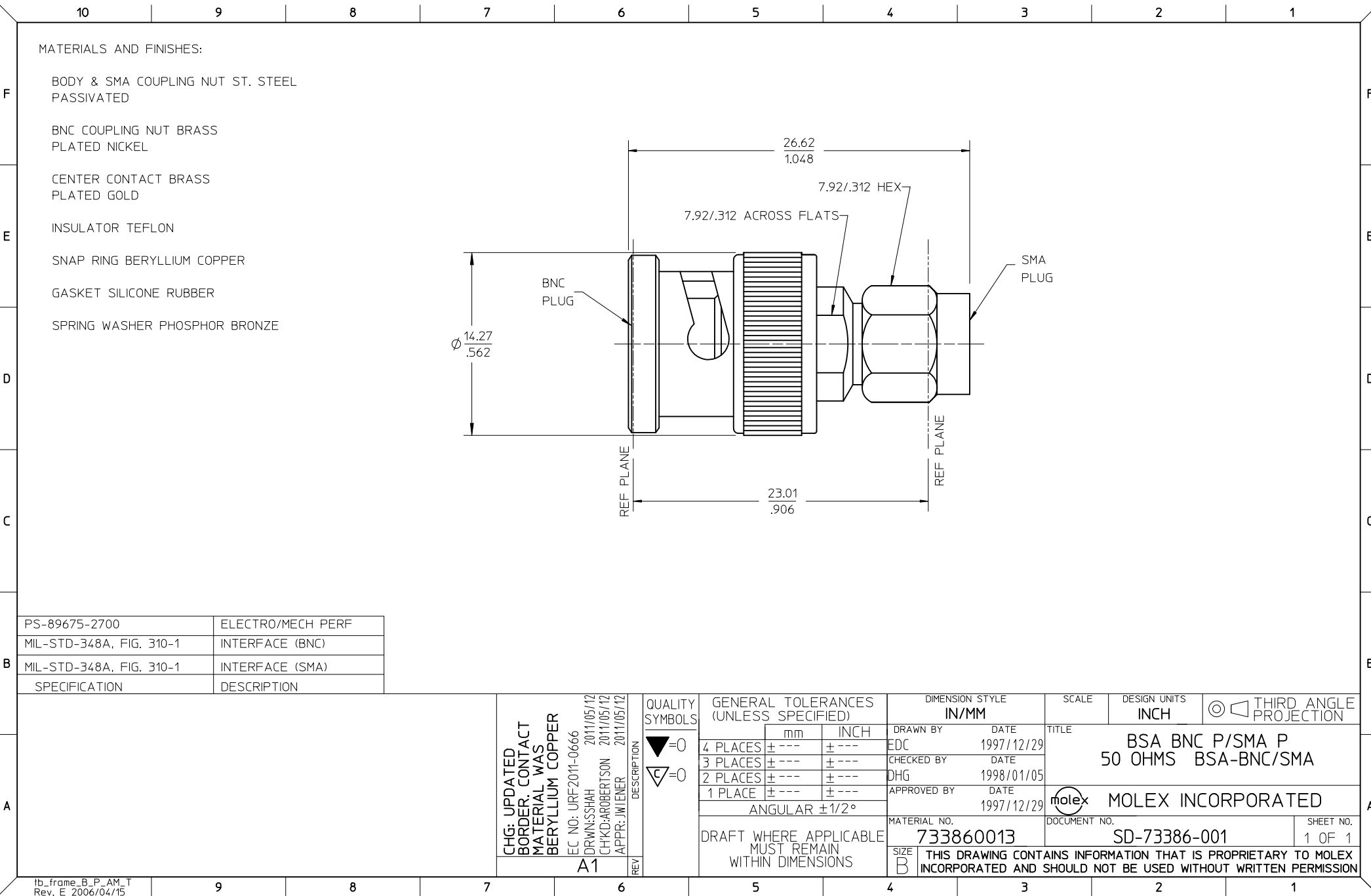
Contact us

Tel: +86-755-8981 8866 Fax: +86-755-8427 6832

Email & Skype: info@chipsmall.com Web: www.chipsmall.com

Address: A1208, Overseas Decoration Building, #122 Zhenhua RD., Futian, Shenzhen, China





MATERIALS AND FINISHES:

BODY & SMA COUPLING NUT ST. STEEL
PASSIVATED

BNC COUPLING NUT BRASS
PLATED NICKEL

CENTER CONTACT BRASS
PLATED GOLD


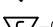

INSULATOR TEFLON

SNAP RING BERYLLIUM COPPER

GASKET SILICONE RUBBER

SPRING WASHER PHOSPHOR BRONZE

PS-89675-2700	ELECTRO/MECH PERF
MIL-STD-348A, FIG. 310-1	INTERFACE (BNC)
MIL-STD-348A, FIG. 310-1	INTERFACE (SMA)
SPECIFICATION	DESCRIPTION

CHG: UPDATED BORDER CONTACT MATERIAL WAS BERYLLIUM COPPER	EC NO: URF2011-0666 DRWN:SSHAH 2011/05/12 CHKD:AROBERTSON 2011/05/12 APPR: JWIENER 2011/05/12	QUALITY SYMBOLS	DESCRIPTION	GENERAL TOLERANCES (UNLESS SPECIFIED)		DIMENSION STYLE IN/MM		SCALE	DESIGN UNITS INCH	 THIRD ANGLE PROJECTION	
				▽=0  =0	mm	INCH	DRAWN BY	DATE	TITLE BSA BNC P/SMA P 50 OHMS BSA-BNC/SMA		
					4 PLACES	± ---	± ---	EDC			1997/12/29
					3 PLACES	± ---	± ---	CHECKED BY			DATE
					2 PLACES	± ---	± ---	DHG			1998/01/05
				1 PLACE	± ---	± ---	APPROVED BY	DATE	 MOLEX INCORPORATED		
ANGULAR ±1/2°		1997/12/29									
A1	REV			DRAFT WHERE APPLICABLE MUST REMAIN WITHIN DIMENSIONS		MATERIAL NO. 733860013		DOCUMENT NO. SD-73386-001		SHEET NO. 1 OF 1	
						SIZE B		THIS DRAWING CONTAINS INFORMATION THAT IS PROPRIETARY TO MOLEX INCORPORATED AND SHOULD NOT BE USED WITHOUT WRITTEN PERMISSION			