



Chipsmall Limited consists of a professional team with an average of over 10 year of expertise in the distribution of electronic components. Based in Hongkong, we have already established firm and mutual-benefit business relationships with customers from,Europe,America and south Asia,supplying obsolete and hard-to-find components to meet their specific needs.

With the principle of “Quality Parts,Customers Priority,Honest Operation,and Considerate Service”,our business mainly focus on the distribution of electronic components. Line cards we deal with include Microchip,ALPS,ROHM,Xilinx,Pulse,ON,Everlight and Freescale. Main products comprise IC,Modules,Potentiometer,IC Socket,Relay,Connector.Our parts cover such applications as commercial,industrial, and automotives areas.

We are looking forward to setting up business relationship with you and hope to provide you with the best service and solution. Let us make a better world for our industry!



Contact us

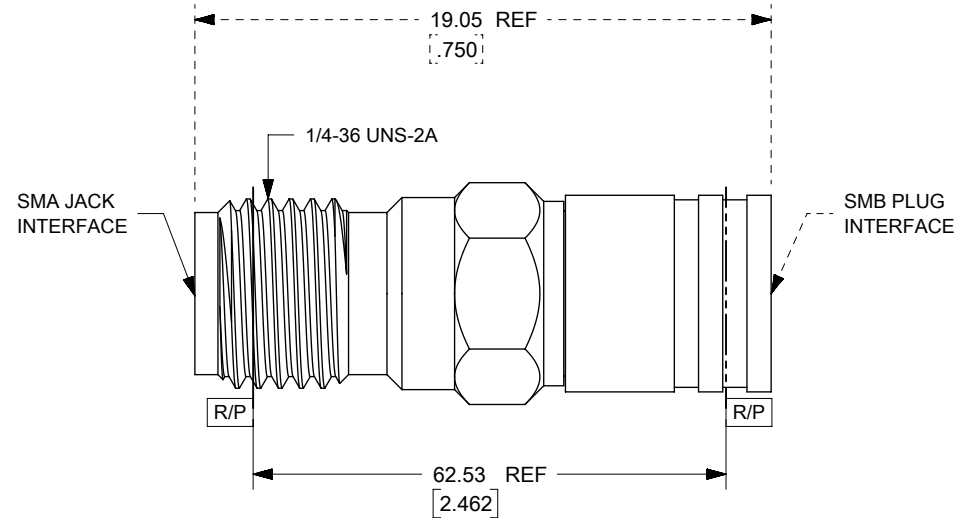
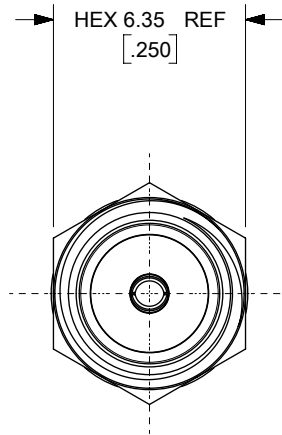
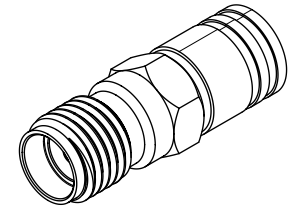
Tel: +86-755-8981 8866 Fax: +86-755-8427 6832

Email & Skype: info@chipsmall.com Web: www.chipsmall.com

Address: A1208, Overseas Decoration Building, #122 Zhenhua RD., Futian, Shenzhen, China



SLEEVE BRASS
PLATED NICKEL



73386-0224	73386-0223, ONE PER BAG
73386-0223	TRAY
PSRT NO.	DESCRIPTION

PS-89675-2730	ELEC/MECH PERFORMANCE
MIL-STD-348A, FIG. 311.2	SMB INTERFACE
MIL-STD-348A, FIG. 310.2	SMA INTERFACE
SPECIFICATION	DESCRIPTION

REVISION HISTORY		
DATE	REV	DESCRIPTION
1998/1/5	A	NEW RELEASE
2007/2/8	A1	REDREW IN SD, ADD -0224
2015/4/17	A2	PACKING FROM BULK TO TRAY PER RF-15-E176
2016/9/13	A3	CORRECT TYPO FOR INTERFACE PER RF16-E152

THIS DRAWING CONTAINS INFORMATION THAT IS PROPRIETARY TO MOLEX INCORPORATED AND SHOULD NOT BE USED WITHOUT WRITTEN PERMISSION

EC DESCRIPTION	EC NO: 108375	2016/09/13	QUALITY SYMBOLS	GENERAL TOLERANCES (UNLESS SPECIFIED)		DIMENSION UNITS		SCALE		<div>molex</div>						
	DRWN: RYEH	2016/09/13		ANGULAR TOL ± °		MM	2:1	DRWN BY DATE								
	CHCKD: YCHENG	2016/09/13		4 PLACES ±	SHO01		2015/04/15		CHK'D BY DATE							
	APPR: RYEH	2016/09/13		3 PLACES ±	CHK'D BY DATE		APPR BY DATE									
	REV	2016/09/13		2 PLACES ±	APPR BY DATE		DRAWING SIZE		THIRD ANGLE PROJECTION		SMB PLUG TO SMA JACK ADAPTER, 50 OHMS BSA-SMBP/SMAJ					
	A3	2016/09/13		1 PLACE ±	APPR BY DATE		DRAWING SIZE		THIRD ANGLE PROJECTION							
				0 PLACES ±	APPR BY DATE		DRAWING SIZE		THIRD ANGLE PROJECTION		PRODUCT CUSTOMER DRAWING					
				DRAFT WHERE APPLICABLE MUST REMAIN WITHIN DIMENSIONS	APPR BY DATE		DRAWING SIZE		THIRD ANGLE PROJECTION		SERIES		MATERIAL NUMBER		CUSTOMER	
					APPR BY DATE		DRAWING SIZE		THIRD ANGLE PROJECTION		73386					
					APPR BY DATE		DRAWING SIZE		THIRD ANGLE PROJECTION		DOCUMENT NUMBER		DOC TYPE		DOC PART	
			APPR BY DATE		DRAWING SIZE		THIRD ANGLE PROJECTION		SD-73386-022		PSD		000		1 OF 1	