



Chipsmall Limited consists of a professional team with an average of over 10 year of expertise in the distribution of electronic components. Based in Hongkong, we have already established firm and mutual-benefit business relationships with customers from,Europe,America and south Asia,supplying obsolete and hard-to-find components to meet their specific needs.

With the principle of “Quality Parts,Customers Priority,Honest Operation,and Considerate Service”,our business mainly focus on the distribution of electronic components. Line cards we deal with include Microchip,ALPS,ROHM,Xilinx,Pulse,ON,Everlight and Freescale. Main products comprise IC,Modules,Potentiometer,IC Socket,Relay,Connector.Our parts cover such applications as commercial,industrial, and automotives areas.

We are looking forward to setting up business relationship with you and hope to provide you with the best service and solution. Let us make a better world for our industry!



Contact us

Tel: +86-755-8981 8866 Fax: +86-755-8427 6832

Email & Skype: info@chipsmall.com Web: www.chipsmall.com

Address: A1208, Overseas Decoration Building, #122 Zhenhua RD., Futian, Shenzhen, China



MATERIAL AND FINISHES

BODY: STAINLESS STEEL
PASSIVATED

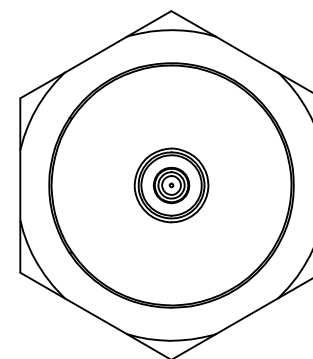
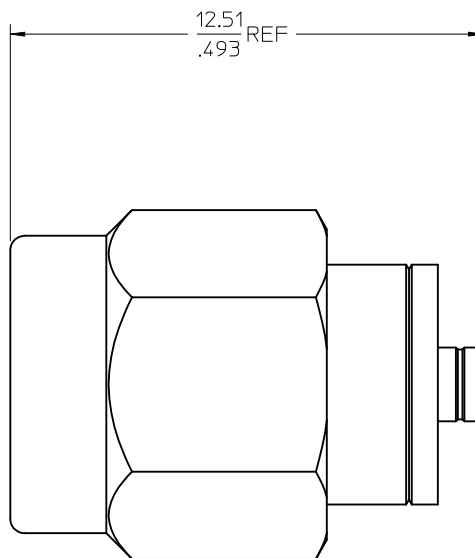
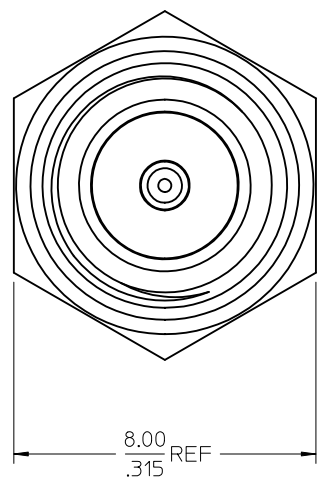
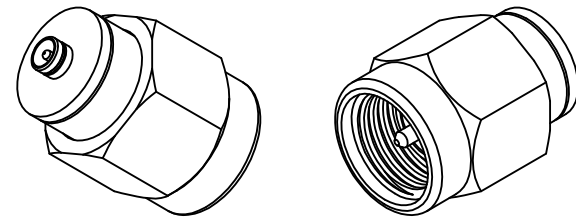
CONTACT: BRASS
PLATED GOLD

INSULATOR: TEFLON

COUPLING NUT: BRASS
PLATED NICKEL

SNAP RING: BERYLLIUM COPPER

GASKET: SILICONE RUBBER



73386-0851	73386-0850 ONE PIECE PER BAG
73386-0850	STANDARD
PART NO.	PACKAGING

CHG: ADDED -0851 SINGLE BAG	EC NO: URF2011-0651	2011/05/04
DRWN:JLEE02	CHKD:SSS	2011/05/04
APPR:JMIENER		2011/05/05
REV	DESCRIPTION	
B1		

QUALITY SYMBOLS
▽=0
▽=0

GENERAL TOLERANCES (UNLESS SPECIFIED)
4 PLACES ± --- ± ---
3 PLACES ± --- ± ---
2 PLACES ± 0.10 ± ---
1 PLACE ± 0.13 ± ---
ANGULAR ± 2 °
DRAFT WHERE APPLICABLE MUST REMAIN WITHIN DIMENSIONS

DIMENSION STYLE	SCALE
MM/IN	METRIC
DRAWN BY	DATE
JOHN	2004/05/28
CHECKED BY	DATE
KENNY	2004/05/28
APPROVED BY	DATE
MISEN	2004/05/28
MATERIAL NO.	DOCUMENT NO.
SEE TABLE	SD-73386-085
SIZE	
C	

TITLE	THIRD ANGLE PROJECTION
BSA, SMA PLUG TO U.FL PLUG, 50 OHMS BSA-SMA/UFL	
MOLEX INCORPORATED	
SHEET NO.	1 OF 1
THIS DRAWING CONTAINS INFORMATION THAT IS PROPRIETARY TO MOLEX INCORPORATED AND SHOULD NOT BE USED WITHOUT WRITTEN PERMISSION	