



Chipsmall Limited consists of a professional team with an average of over 10 year of expertise in the distribution of electronic components. Based in Hongkong, we have already established firm and mutual-benefit business relationships with customers from,Europe,America and south Asia,supplying obsolete and hard-to-find components to meet their specific needs.

With the principle of "Quality Parts,Customers Priority,Honest Operation,and Considerate Service",our business mainly focus on the distribution of electronic components. Line cards we deal with include Microchip,ALPS,ROHM,Xilinx,Pulse,ON,Everlight and Freescale. Main products comprise IC,Modules,Potentiometer,IC Socket,Relay,Connector.Our parts cover such applications as commercial,industrial, and automotives areas.

We are looking forward to setting up business relationship with you and hope to provide you with the best service and solution. Let us make a better world for our industry!



## Contact us

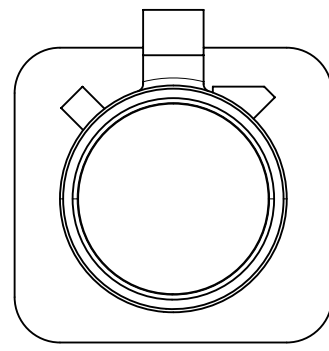
Tel: +86-755-8981 8866 Fax: +86-755-8427 6832

Email & Skype: info@chipsmall.com Web: www.chipsmall.com

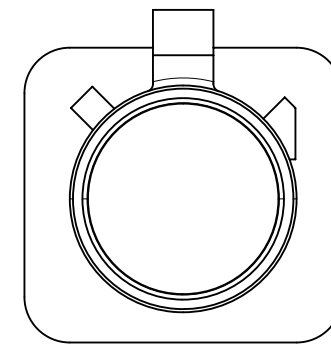
Address: A1208, Overseas Decoration Building, #122 Zhenhua RD., Futian, Shenzhen, China



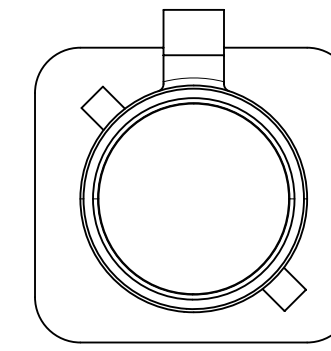




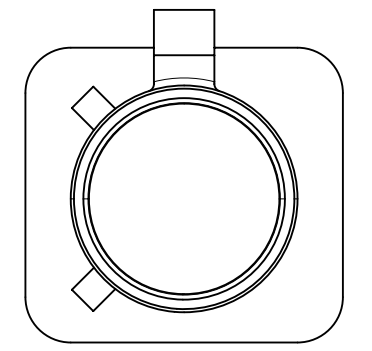
CODE A



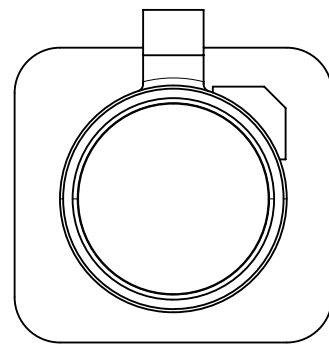
CODE B



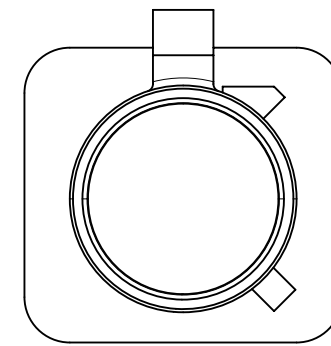
CODE C



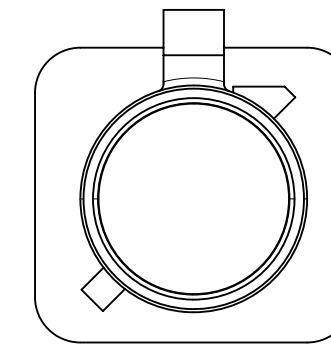
CODE D



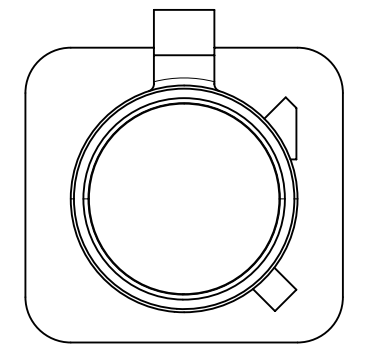
CODE E



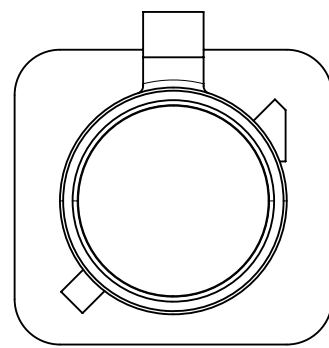
CODE F



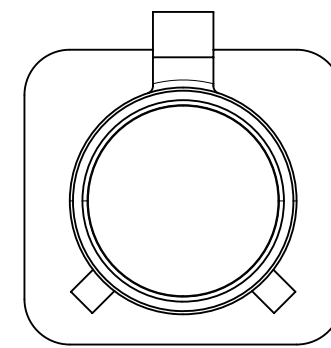
CODE G



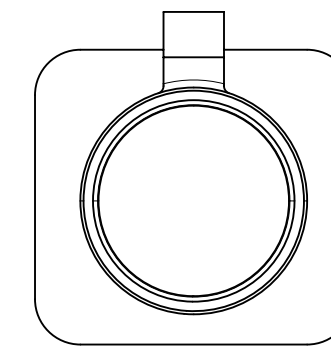
CODE H



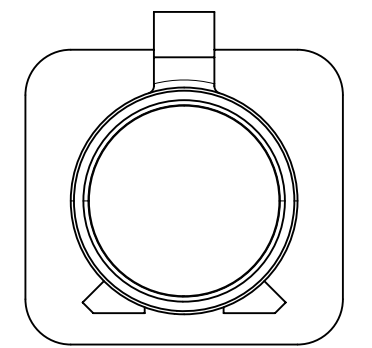
CODE I



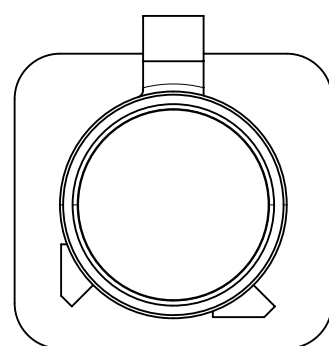
CODE K



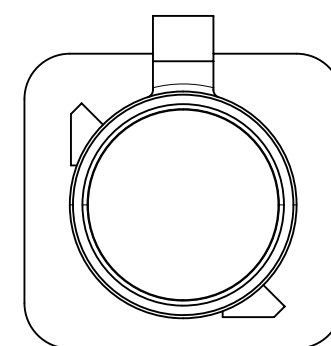
CODE Z



CODE L



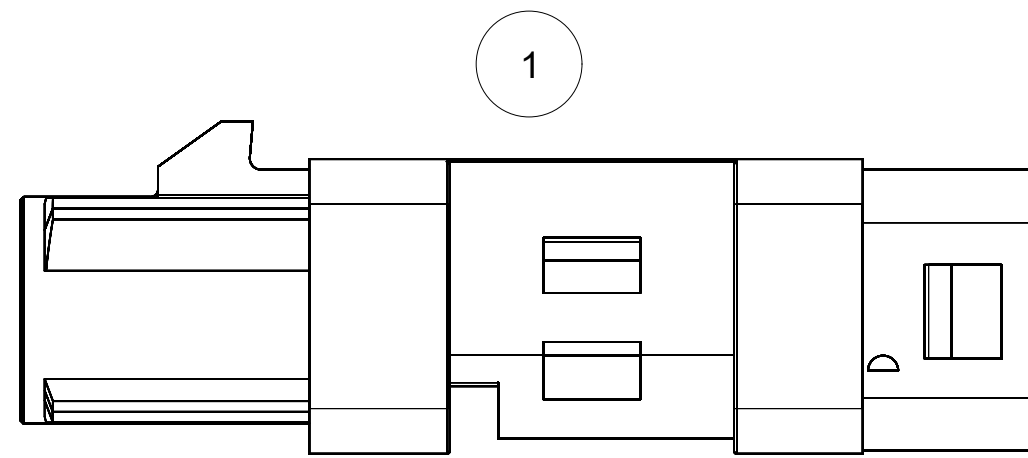
CODE M



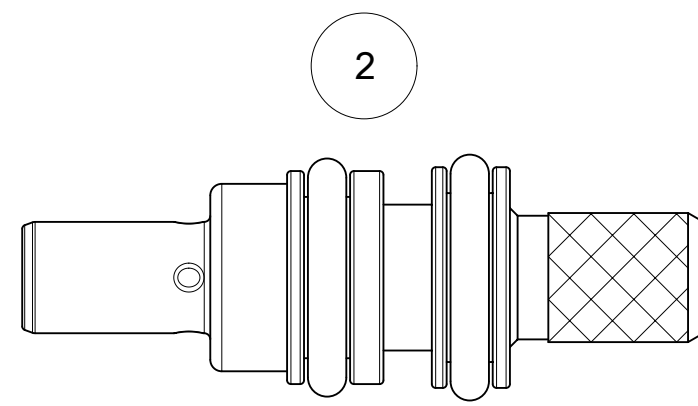
CODE N

89558-9203	N	PASTEL GREEN
89558-9202	M	PASTEL ORANGE
89558-9201	L	CARMINE RED
89558-9200	Z	WATER BLUE
89558-9199	K	CURRY YELLOW
89558-9198	I	BEIGE
89558-9197	H	VIOLET
89558-9196	G	GRAY
89558-9195	F	BROWN
89558-9194	E	GREEN
89558-9193	D	BORDEAUX VIOLET
89558-9192	C	BLUE
89558-9191	B	CREAM WHITE
89558-9190	A	BLACK
SHROUD NO.	KEY CODE	COLOR

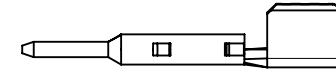
<b>QUALITY SYMBOLS</b> 	THIS DRAWING CONTAINS INFORMATION THAT IS PROPRIETARY TO MOLEX ELECTRONIC TECHNOLOGIES, LLC AND SHOULD NOT BE USED WITHOUT WRITTEN PERMISSION				
	EC NO: 122054 DRWN: BSHAH CHKD: REV / APPR: AROBERTSON	2017/09/07 2017/09/21	GENERAL TOLERANCES (UNLESS SPECIFIED)		DIMENSION UNITS
					METRIC
					SCALE
					NTS
					DRWN BY
			LMEIER	DATE	
			2016/05/16		
			CHK'D BY	DATE	
			SSS	2016/05/16	
		APPR BY	DATE		
		AROBERTSON	2016/07/12		
		ANGULAR TOL = 2.0	DRAWING SIZE		
		C	THIRD ANGLE PROJECTION		
		DRAFT WHERE APPLICABLE MUST REMAIN WITHIN DIMENSIONS			
		<b>molex</b> FAKRA JACK SEALED RG58 7 MM CLIP SLOT FAKRA-JC, EWR-10016 PRODUCT CUSTOMER DRAWING			
		SERIES	MATERIAL NUMBER	CUSTOMER	
		73403	SEE SHT'S 3 & 4		
		DOCUMENT NUMBER	DOC TYPE	DOC PART	
		SD-73403-105	PSD	001	
		SHEET NUMBER			
		2 OF 4			



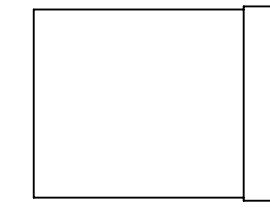
SHROUD



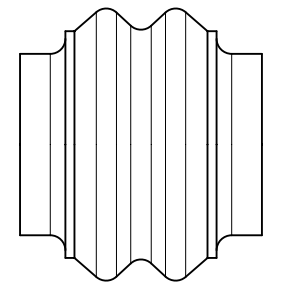
SMB SUB-ASSEMBLY



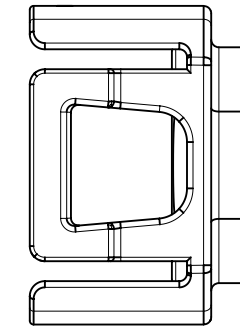
CONTACT  
(SHOWN LOOSE  
COMES ON T&R)



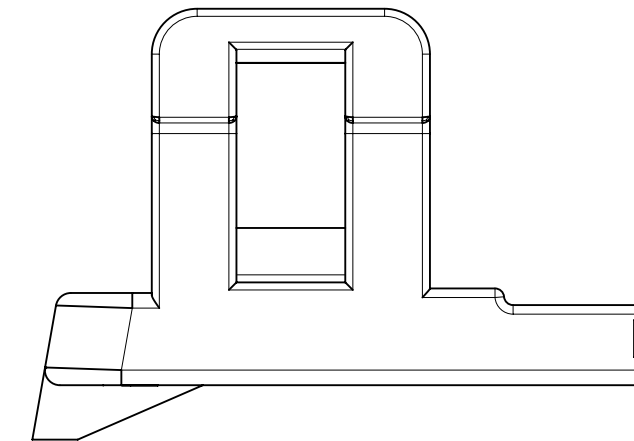
CRIMP TUBE



CABLE SEAL



END CAP

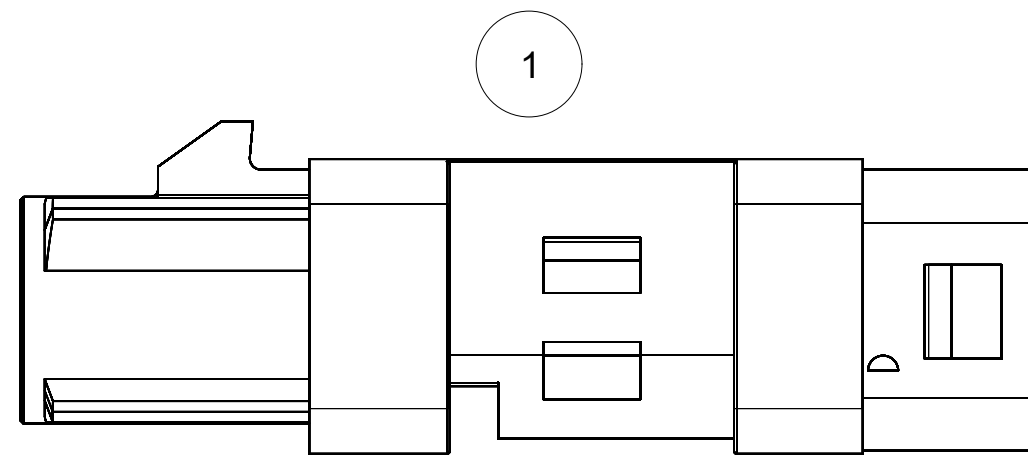


ISL 7mm CLIP SLOT

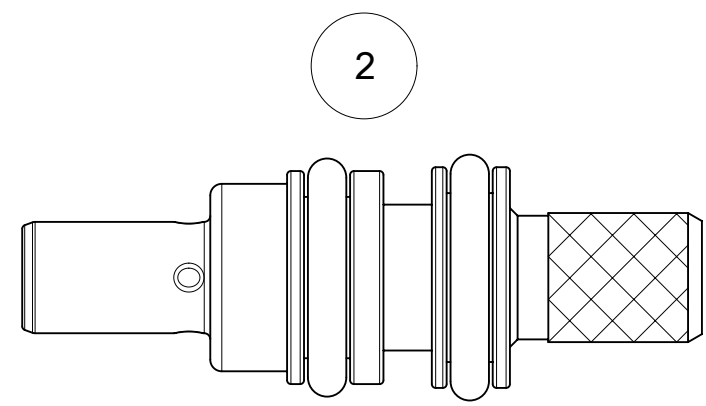
- NOTES:  
 1. ITEM 2 TO BE TRAY PACKED.  
 2. ALL ITEMS MAY BE BAGGED INDIVIDUALLY TOGETHER WHEN SOLD AS 73403-1XXX ASSEMBLY NUMBER.  
 3. ITEMS 1/3/4/5/6/7 MAY BE INDIVIDUALLY BULK PACKED. BULK PACKAGE QUANTITIES MUST NOT INDUCE ANY DAMAGE TO PARTS.

73403-1063	N	PASTEL GREEN	89558-9203	73404-3290	89556-2511	89558-7992	89558-9230	89558-9210	89558-8140
73403-1062	M	PASTEL ORANGE	89558-9202	73404-3290	89556-2511	89558-7992	89558-9230	89558-9210	89558-8140
73403-1061	L	CARMINE RED	89558-9201	73404-3290	89556-2511	89558-7992	89558-9230	89558-9210	89558-8140
73403-1060	Z	WATER BLUE	89558-9200	73404-3290	89556-2511	89558-7992	89558-9230	89558-9210	89558-8140
73403-1059	K	CURRY YELLOW	89558-9199	73404-3290	89556-2511	89558-7992	89558-9230	89558-9210	89558-8140
73403-1058	I	BEIGE	89558-9198	73404-3290	89556-2511	89558-7992	89558-9230	89558-9210	89558-8140
73403-1057	H	VIOLET	89558-9197	73404-3290	89556-2511	89558-7992	89558-9230	89558-9210	89558-8140
73403-1056	G	GRAY	89558-9196	73404-3290	89556-2511	89558-7992	89558-9230	89558-9210	89558-8140
73403-1055	F	BROWN	89558-9195	73404-3290	89556-2511	89558-7992	89558-9230	89558-9210	89558-8140
73403-1054	E	GREEN	89558-9194	73404-3290	89556-2511	89558-7992	89558-9230	89558-9210	89558-8140
73403-1053	D	BORDEAUX VIOLET	89558-9193	73404-3290	89556-2511	89558-7992	89558-9230	89558-9210	89558-8140
73403-1052	C	BLUE	89558-9192	73404-3290	89556-2511	89558-7992	89558-9230	89558-9210	89558-8140
73403-1051	B	CREAM WHITE	89558-9191	73404-3290	89556-2511	89558-7992	89558-9230	89558-9210	89558-8140
73403-1050	A	BLACK	89558-9190	73404-3290	89556-2511	89558-7992	89558-9230	89558-9210	89558-8140
PART NO.	KEY CODE	COLOR	ITEM NO. 1	ITEM NO. 2	ITEM NO. 3	ITEM NO. 4	ITEM NO. 5	ITEM NO. 6	ITEM NO. 7
			SHROUD	SMB SUB-ASSY	CONTACT (T&R)	CRIMP TUBE	CABLE SEAL	END CAP	ISL 7mm CS

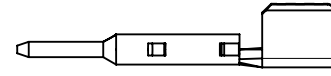
QUALITY SYMBOLS ▽ = 0 ▽ = 0 ▽ = 0 ▽ = 0 ▽ = 0 ▽ = 0 ▽ = 0 ▽ = 0 ▽ = 0 ▽ = 0	THIS DRAWING CONTAINS INFORMATION THAT IS PROPRIETARY TO MOLEX ELECTRONIC TECHNOLOGIES, LLC AND SHOULD NOT BE USED WITHOUT WRITTEN PERMISSION		DIMENSION UNITS METRIC      NTS		
	GENERAL TOLERANCES (UNLESS SPECIFIED) MM      INCH		DRWN BY      DATE LMEIER      2016/05/16		
	4 PLACES ±      ± 3 PLACES ±      ± 0.005 2 PLACES ± 0.13      ± 0.01 1 PLACES ± 0.25      ± 0 PLACES ±      ±		CHK'D BY      DATE SSS      2016/05/16		
	ANGULAR TOL = 2.0 DRAFT WHERE APPLICABLE MUST REMAIN WITHIN DIMENSIONS		APPR BY      DATE AROBERTSON      2016/07/12		
EC NO: 122054 DRWN: BSHAH CHKD: AROBERTSON REV / APPR:		DRAWING SIZE C		THIRD ANGLE PROJECTION	
PRODUCT CUSTOMER DRAWING			SERIES      MATERIAL NUMBER      CUSTOMER 73403      SEE TABLE		
DOCUMENT NUMBER SD-73403-105			DOC TYPE      DOC PART      SHEET NUMBER PSD      001      3 OF 4		



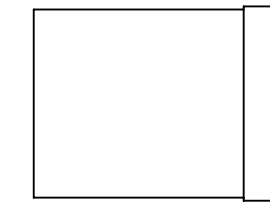
SHROUD



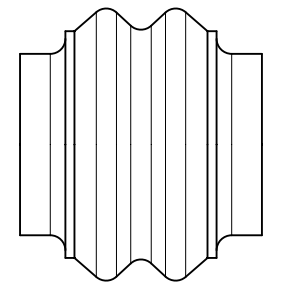
SMB SUB-ASSEMBLY



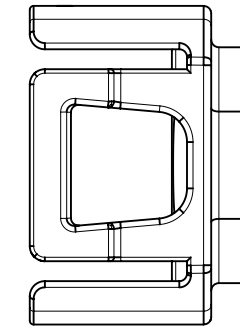
CONTACT  
(SHOWN LOOSE  
COMES ON T&R)



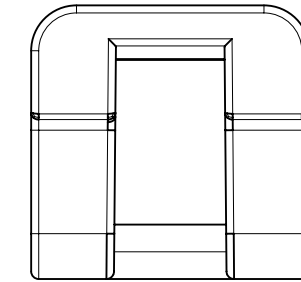
CRIMP TUBE



CABLE SEAL



END CAP



ISL NO CLIP SLOT

NOTES:

- 1. ITEM 2 TO BE TRAY PACKED.
- 2. ALL ITEMS MAY BE BAGGED INDIVIDUALLY TOGETHER WHEN SOLD AS 73403-1XXX ASSEMBLY NUMBER.
- 3. ITEMS 1/3/4/5/6/7 MAY BE INDIVIDUALLY BULK PACKED. BULK PACKAGE QUANTITIES MUST NOT INDUCE ANY DAMAGE TO PARTS.

73403-1123	N	PASTEL GREEN	89558-9203	73404-3290	89556-2511	89558-7992	89558-9230	89558-9210	89558-8150
73403-1122	M	PASTEL ORANGE	89558-9202	73404-3290	89556-2511	89558-7992	89558-9230	89558-9210	89558-8150
73403-1121	L	CARMINE RED	89558-9201	73404-3290	89556-2511	89558-7992	89558-9230	89558-9210	89558-8150
73403-1120	Z	WATER BLUE	89558-9200	73404-3290	89556-2511	89558-7992	89558-9230	89558-9210	89558-8150
73403-1119	K	CURRY YELLOW	89558-9199	73404-3290	89556-2511	89558-7992	89558-9230	89558-9210	89558-8150
73403-1118	I	BEIGE	89558-9198	73404-3290	89556-2511	89558-7992	89558-9230	89558-9210	89558-8150
73403-1117	H	VIOLET	89558-9197	73404-3290	89556-2511	89558-7992	89558-9230	89558-9210	89558-8150
73403-1116	G	GRAY	89558-9196	73404-3290	89556-2511	89558-7992	89558-9230	89558-9210	89558-8150
73403-1115	F	BROWN	89558-9195	73404-3290	89556-2511	89558-7992	89558-9230	89558-9210	89558-8150
73403-1114	E	GREEN	89558-9194	73404-3290	89556-2511	89558-7992	89558-9230	89558-9210	89558-8150
73403-1113	D	BORDEAUX VIOLET	89558-9193	73404-3290	89556-2511	89558-7992	89558-9230	89558-9210	89558-8150
73403-1112	C	BLUE	89558-9192	73404-3290	89556-2511	89558-7992	89558-9230	89558-9210	89558-8150
73403-1111	B	CREAM WHITE	89558-9191	73404-3290	89556-2511	89558-7992	89558-9230	89558-9210	89558-8150
73403-1110	A	BLACK	89558-9190	73404-3290	89556-2511	89558-7992	89558-9230	89558-9210	89558-8150
PART NO.	KEY CODE	COLOR	ITEM NO. 1	ITEM NO. 2	ITEM NO. 3	ITEM NO. 4	ITEM NO. 5	ITEM NO. 6	ITEM NO. 7
			SHROUD	SMB SUB-ASSY	CONTACT (T&R)	CRIMP TUBE	CABLE SEAL	END CAP	ISL NO CS

<p>QUALITY SYMBOLS</p> <p>▽ = 0</p> <p>▽ = 0</p> <p>▽ = 0</p> <p>▽ = 0</p> <p>▽ = 0</p> <p>▽ = 0</p> <p>▽ = 0</p> <p>▽ = 0</p> <p>▽ = 0</p>	<p>THIS DRAWING CONTAINS INFORMATION THAT IS PROPRIETARY TO MOLEX ELECTRONIC TECHNOLOGIES, LLC AND SHOULD NOT BE USED WITHOUT WRITTEN PERMISSION</p>	<p>DIMENSION UNITS</p> <p>METRIC      NTS</p>		<p>SCALE</p>	<p><b>molex</b></p>		
		<p>GENERAL TOLERANCES (UNLESS SPECIFIED)</p> <p>MM      INCH</p>				<p>DRWN BY</p> <p>LMEIER</p>	<p>DATE</p> <p>2016/05/16</p>
		<p>4 PLACES ±      ±</p> <p>3 PLACES ±      ± 0.005</p> <p>2 PLACES ± 0.13      ± 0.01</p> <p>1 PLACES ± 0.25      ±</p> <p>0 PLACES ±      ±</p>				<p>CHK'D BY</p> <p>SSS</p>	<p>DATE</p> <p>2016/05/16</p>
		<p>ANGULAR TOL = 2.0</p> <p>DRAFT WHERE APPLICABLE MUST REMAIN WITHIN DIMENSIONS</p>				<p>APPR BY</p> <p>AROBERTSON</p>	<p>DATE</p> <p>2016/07/12</p>
<p>EC NO: 122054</p> <p>DRWN: BSHAH</p> <p>CHKD: AROBERTSON</p> <p>REV / APPR: AROBERTSON</p>		<p>DRAWING SIZE</p> <p>C</p>	<p>THIRD ANGLE PROJECTION</p>	<p>PRODUCT CUSTOMER DRAWING</p>			
<p>RELEASE STATUS    P1    RELEASE DATE    21.09.2017    20:44:23</p>		<p>SERIES    MATERIAL NUMBER    CUSTOMER</p> <p>73403    SEE TABLE</p>		<p>DOCUMENT NUMBER    DOC TYPE    DOC PART    SHEET NUMBER</p> <p>SD-73403-105    PSD    001    4 OF 4</p>			