



Chipsmall Limited consists of a professional team with an average of over 10 year of expertise in the distribution of electronic components. Based in Hongkong, we have already established firm and mutual-benefit business relationships with customers from,Europe,America and south Asia,supplying obsolete and hard-to-find components to meet their specific needs.

With the principle of “Quality Parts,Customers Priority,Honest Operation,and Considerate Service”,our business mainly focus on the distribution of electronic components. Line cards we deal with include Microchip,ALPS,ROHM,Xilinx,Pulse,ON,Everlight and Freescale. Main products comprise IC,Modules,Potentiometer,IC Socket,Relay,Connector.Our parts cover such applications as commercial,industrial, and automotives areas.

We are looking forward to setting up business relationship with you and hope to provide you with the best service and solution. Let us make a better world for our industry!



Contact us

Tel: +86-755-8981 8866 Fax: +86-755-8427 6832

Email & Skype: info@chipsmall.com Web: www.chipsmall.com

Address: A1208, Overseas Decoration Building, #122 Zhenhua RD., Futian, Shenzhen, China



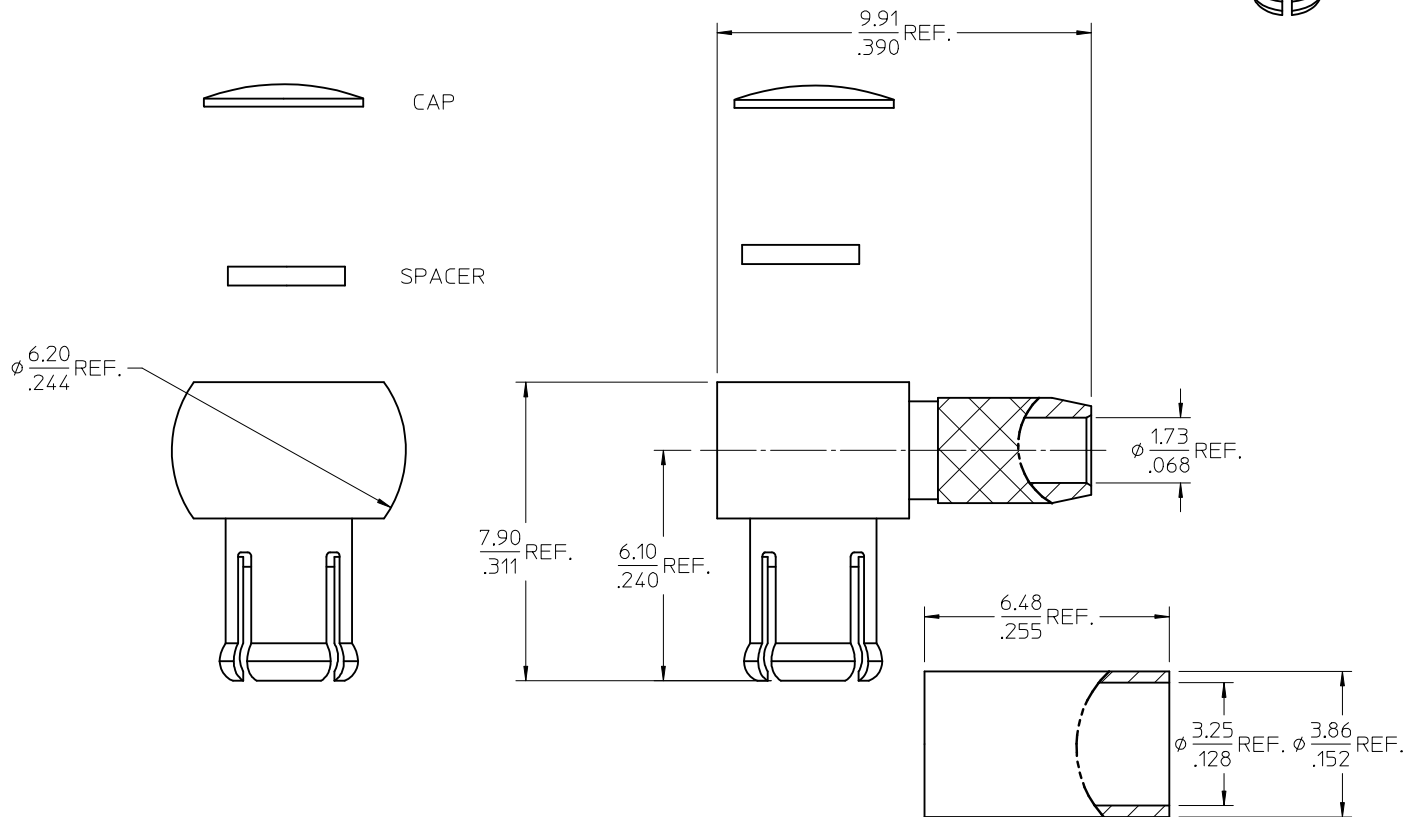
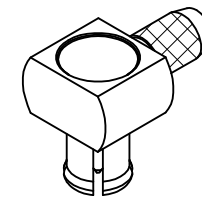
MATERIALS AND FINISHES

BODY, CAP, CRIMP TUBE BRASS
PLATED SEE TABLE

INSULATOR, SPACER TEFLON

CONTACT BRASS
PLATED SEE TABLE

OUTER CONTACT BERYLLIUM COPPER
PLATED SEE TABLE



AS-89678-8590	ASSY INSTRUCTIONS
PS-89675-1760	PRODUCT SPEC.
CECC 22 220	INTERFACE
SPECIFICATION	DESCRIPTION

73415-3641	NICKEL	NICKEL	Au 5 u"	NICKEL	NICKEL
73415-3640	Au 10 u"	Au 10 u"	Au 30 u"	Au 10 u"	Au 10 u"
PART NO.	BODY PLATED	OC PLATED	PIN PLATED	CAP PLATED	TUBE PLATED
DIM X	-	-	-	-	-

REDRAW AND ADDED P/N: -3641 PER RF15-E037 EC NO: URF2015-0079 DRAWN: LIN CHKD: APPR: YCHENG 2014/09/10 2014/09/12	DESCRIPTION A2	QUALITY SYMBOLS	GENERAL TOLERANCES (UNLESS SPECIFIED)	DIMENSION STYLE	SCALE	DESIGN UNITS	THIRD ANGLE PROJECTION	
		$\nabla = 0$	mm INCH	MM/IN	10:1	METRIC		
		$\nabla = 0$	4 PLACES \pm --- \pm ---	DRAWN BY DATE	TITLE MCX, PLUG R/A FOR RG179 CABLE 75 OHMS MCX-PC/RA molex			
		$\nabla = 0$	3 PLACES \pm --- \pm ---	CHECKED BY DATE				
	2 PLACES \pm --- \pm ---	VINCENT 2014/09/10	DOCUMENT NO. SD-73415-364 SHEET NO. 1 OF 1					
	1 PLACE \pm --- \pm ---	APPROVED BY DATE						
	0 PLACE \pm --- \pm ---	YCHENG 2014/09/12	MATERIAL NO. SEE TABLE SIZE C THIS DRAWING CONTAINS INFORMATION THAT IS PROPRIETARY TO MOLEX INCORPORATED AND SHOULD NOT BE USED WITHOUT WRITTEN PERMISSION					
	ANGULAR $\pm 2^\circ$							
DRAFT WHERE APPLICABLE MUST REMAIN WITHIN DIMENSIONS								