



Chipsmall Limited consists of a professional team with an average of over 10 year of expertise in the distribution of electronic components. Based in Hongkong, we have already established firm and mutual-benefit business relationships with customers from,Europe,America and south Asia,supplying obsolete and hard-to-find components to meet their specific needs.

With the principle of “Quality Parts,Customers Priority,Honest Operation,and Considerate Service”,our business mainly focus on the distribution of electronic components. Line cards we deal with include Microchip,ALPS,ROHM,Xilinx,Pulse,ON,Everlight and Freescale. Main products comprise IC,Modules,Potentiometer,IC Socket,Relay,Connector.Our parts cover such applications as commercial,industrial, and automotives areas.

We are looking forward to setting up business relationship with you and hope to provide you with the best service and solution. Let us make a better world for our industry!



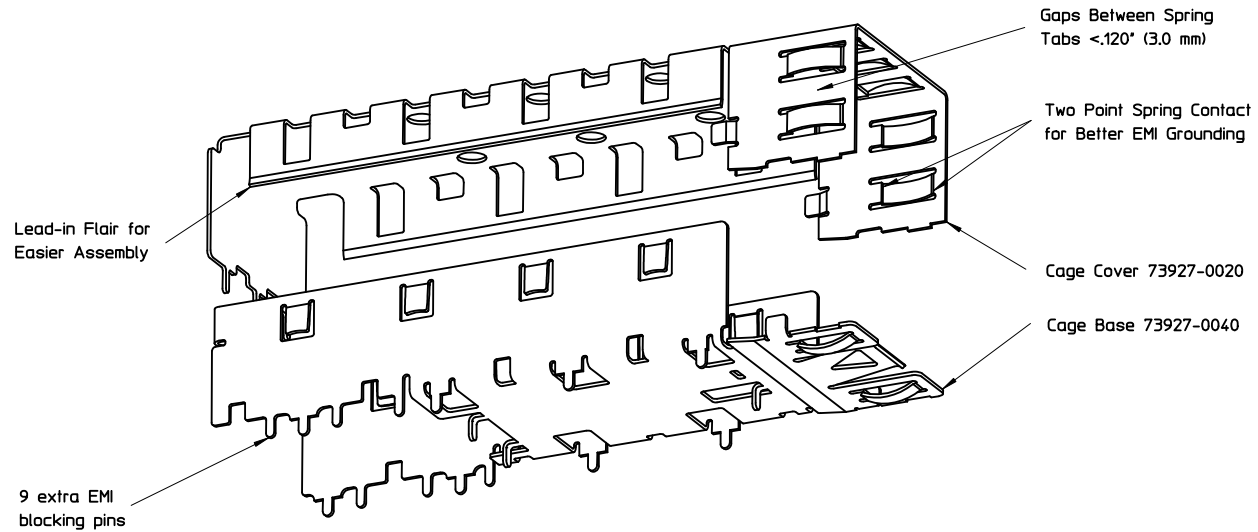
## Contact us

Tel: +86-755-8981 8866 Fax: +86-755-8427 6832

Email & Skype: info@chipsmall.com Web: www.chipsmall.com

Address: A1208, Overseas Decoration Building, #122 Zhenhua RD., Futian, Shenzhen, China



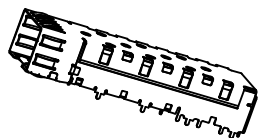


SFP Cage - Exploded View

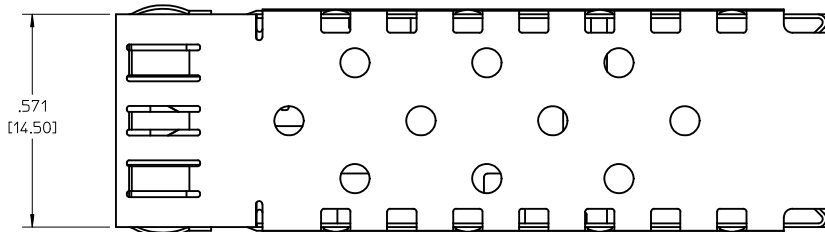
- 1 Material tin plated phosphor-bronze or comparable alloy .010" thick.
- 2 Cage accepts all MSA Small Form-factor Pluggable adapters such as Molex patch cable assembly 73929.
- 3 Sales Drawing Set SD-73927-001 depicts details of press-fit version of cage.
- 4 Sales Drawing Set SD-73927-003 depicts details of surface mount version of cage.

ASSOCIATED PARTS	
MATERIAL NO.	DESCRIPTION
73927-0020	SFP CAGE COVER
73927-0040	SFP CAGE BASE

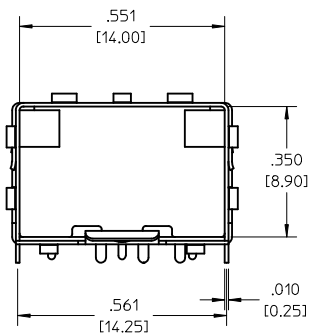
RE-RELEASE - FIX GLITCH EC NO: USY2010-0495 DRWN:MMCKERVEY2010/04/19 CHKD:KJANOTA 2010/04/27 APPR:KJANOTA 2010/04/28	QUALITY SYMBOLS	GENERAL TOLERANCES (UNLESS SPECIFIED)	SCALE 3:1	DESIGN UNITS METRIC	THIRD ANGLE PROJECTION	REVISE ON CAD ONLY	
	DESCRIPTION ▼ = 0 ∇ = 0	mm	INCH	DIMENSION STYLE IN/MM		TITLE	
		4 PLACES ± --- ± ---	3 PLACES ± --- ± .005	DRAWN BY DIRKERS	DATE 2000/09/05	SFP CAGE ASSEMBLY SOLDER POST VERSION	
	2 PLACES ± --- ± ---	1 PLACE ± 0.13 ± ---	CHECKED BY DOYE	DATE 2000/09/05			
B1	ANGULAR ±1/2°	DRAFT WHERE APPLICABLE	APPROVED BY RUSSELL	DATE 2000/09/05	MATERIAL NO. 73927-0002	DOCUMENT NO. SD-73927-002	
		MUST REMAIN WITHIN DIMENSIONS	THIS DRAWING CONTAINS INFORMATION THAT IS PROPRIETARY TO MOLEX INCORPORATED AND SHOULD NOT BE USED WITHOUT WRITTEN PERMISSION				
					SHEET NO. 1 OF 6		



ISOMETRIC  
SCALE 1:1



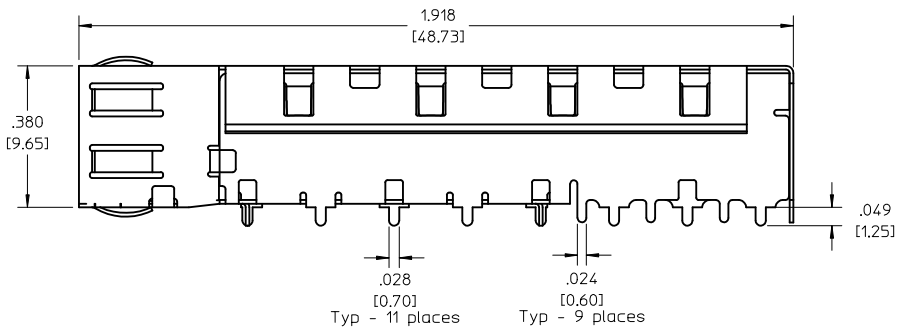
.571  
[14.50]



.551  
[14.00]

.350  
[8.90]

.561 [14.25] .010 [0.25]



1.918  
[48.73]

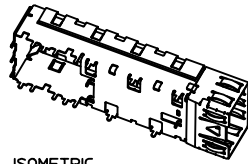
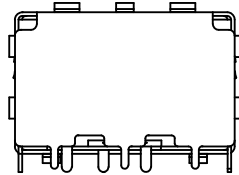
.380  
[9.65]

.049  
[1.25]

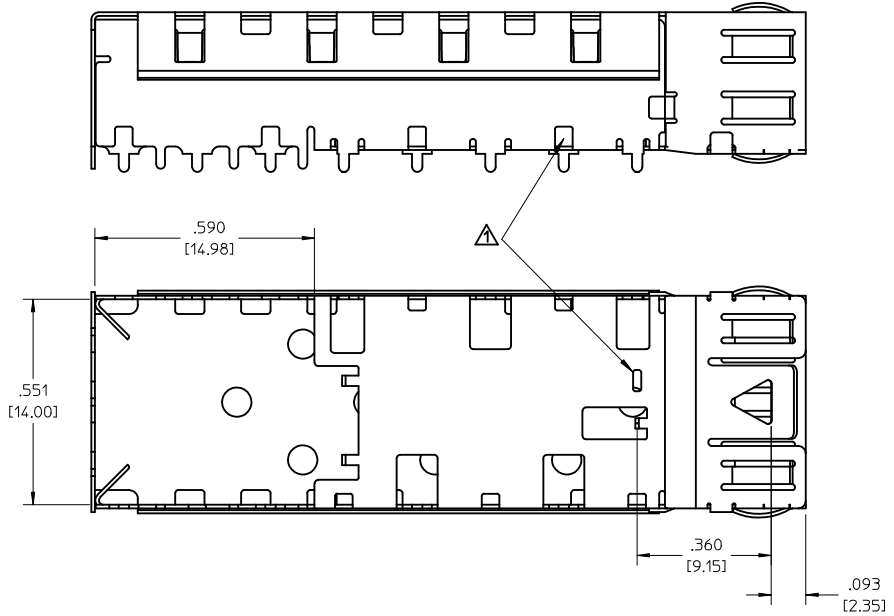
.028 [0.70] Typ - 11 places  
.024 [0.60] Typ - 9 places

1 Solder posts sized to fit MSA standard hole pattern and sizes

RE-RELEASE - FIX GLITCH EC NO: USY2010-0495 DRWN:MMCKERVE/2010/04/19 CHKD:KJANOTA 2010/04/27 APPR:KJANOTA 2010/04/28	QUALITY SYMBOLS	GENERAL TOLERANCES (UNLESS SPECIFIED)		SCALE 5:1	DESIGN UNITS METRIC	THIRD ANGLE PROJECTION	REVISE ON CAD ONLY	
	DESCRIPTION ▼ = 0 ∇ = 0		m/m	INCH	DIMENSION STYLE IN/MM		TITLE	
		4 PLACES	± ---	± ---	DRAWN BY DIRKERS		DATE 2000/09/05	SFP CAGE ASSEMBLY SOLDER POST VERSION
		3 PLACES	± ---	± .005	CHECKED BY DOYE		DATE 2000/09/05	
2 PLACES	± ---	± ---	APPROVED BY RUSSELL		DATE 2000/09/05	MOLEX INCORPORATED MATERIAL NO. 73927-0002 DOCUMENT NO. SD-73927-002 SHEET NO. 2 OF 6		
B1	REV	DRAFT WHERE APPLICABLE MUST REMAIN WITHIN DIMENSIONS		THIS DRAWING CONTAINS INFORMATION THAT IS PROPRIETARY TO MOLEX INCORPORATED AND SHOULD NOT BE USED WITHOUT WRITTEN PERMISSION				

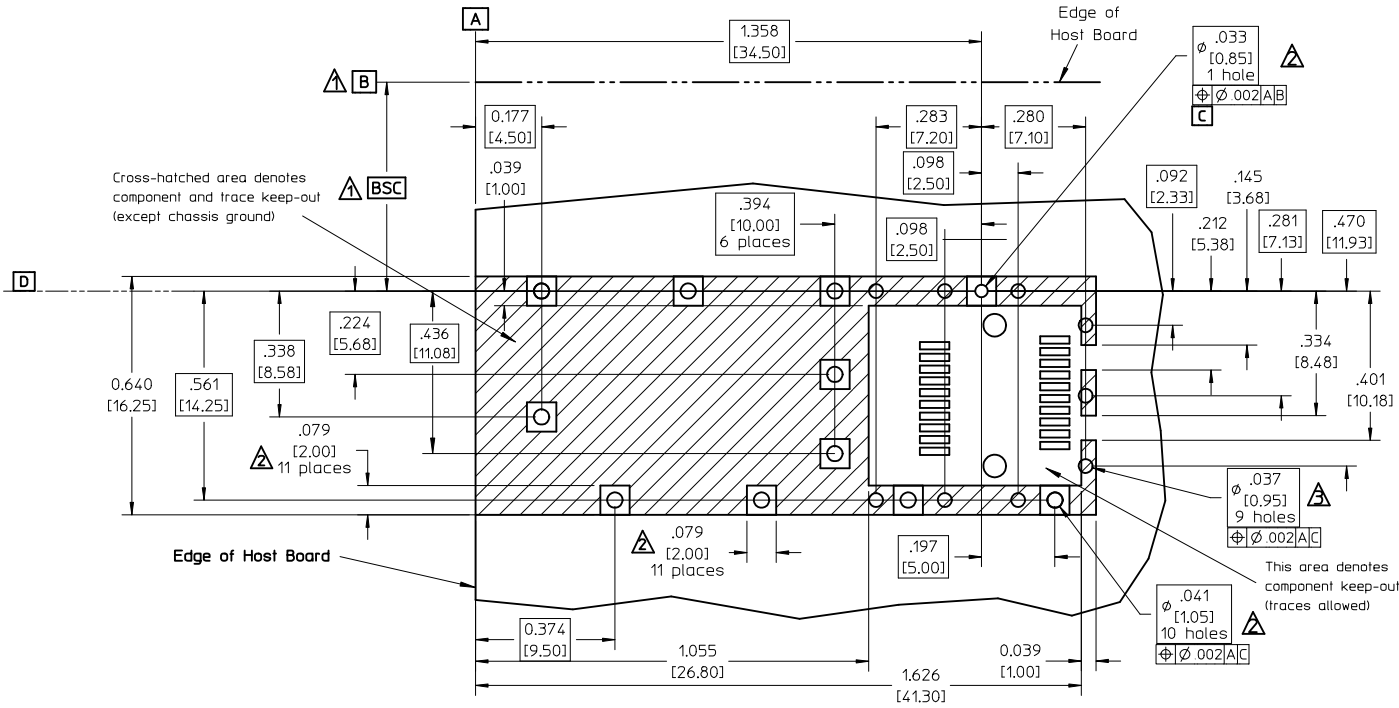


ISOMETRIC  
SCALE 1:1



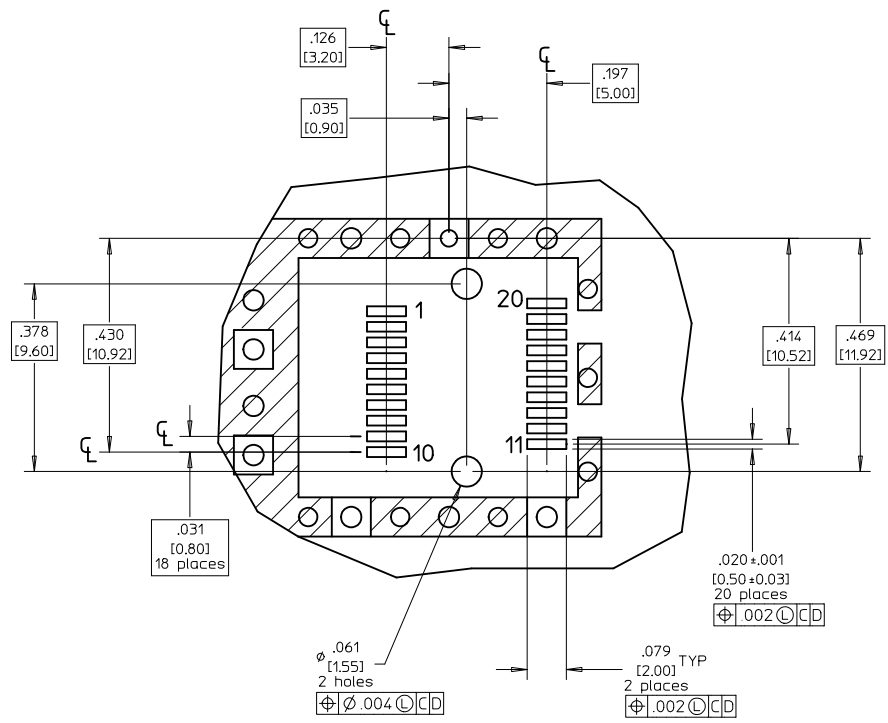
▲ Countercuts accept press-fit pins or solder posts of cage mounted on underside of same host PCB.

RE-RELEASE - FIX GLITCH EC NO: USY2010-0495 DRWN:MMCKERVEY2010/04/19 CHKD:KJANOTA 2010/04/27 APPR:KJANOTA 2010/04/28	QUALITY SYMBOLS	GENERAL TOLERANCES (UNLESS SPECIFIED)	SCALE 5:1	DESIGN UNITS METRIC	THIRD ANGLE PROJECTION	REVISE ON CAD ONLY																														
	▼ .0 ∇ .0	<table border="1"> <thead> <tr> <th></th> <th>mm</th> <th>INCH</th> </tr> </thead> <tbody> <tr> <td>4 PLACES</td> <td>± ---</td> <td>± ---</td> </tr> <tr> <td>3 PLACES</td> <td>± ---</td> <td>± .005</td> </tr> <tr> <td>2 PLACES</td> <td>± ---</td> <td>± ---</td> </tr> <tr> <td>1 PLACE</td> <td>± 0.13</td> <td>± ---</td> </tr> </tbody> </table>		mm	INCH	4 PLACES	± ---	± ---	3 PLACES	± ---	± .005	2 PLACES	± ---	± ---	1 PLACE	± 0.13	± ---	<table border="1"> <thead> <tr> <th colspan="2">DIMENSION STYLE</th> </tr> <tr> <th colspan="2">IN/MM</th> </tr> </thead> <tbody> <tr> <td>DRAWN BY</td> <td>DATE</td> </tr> <tr> <td>DIRKERS</td> <td>2000/09/05</td> </tr> <tr> <td>CHECKED BY</td> <td>DATE</td> </tr> <tr> <td>DOYE</td> <td>2000/09/05</td> </tr> <tr> <td>APPROVED BY</td> <td>DATE</td> </tr> <tr> <td>RUSSELL</td> <td>2000/09/05</td> </tr> </tbody> </table>	DIMENSION STYLE		IN/MM		DRAWN BY	DATE	DIRKERS	2000/09/05	CHECKED BY	DATE	DOYE	2000/09/05	APPROVED BY	DATE	RUSSELL	2000/09/05	TITLE <b>SFP CAGE ASSEMBLY                  SOLDER POST VERSION</b>	
			mm	INCH																																
	4 PLACES	± ---	± ---																																	
3 PLACES	± ---	± .005																																		
2 PLACES	± ---	± ---																																		
1 PLACE	± 0.13	± ---																																		
DIMENSION STYLE																																				
IN/MM																																				
DRAWN BY	DATE																																			
DIRKERS	2000/09/05																																			
CHECKED BY	DATE																																			
DOYE	2000/09/05																																			
APPROVED BY	DATE																																			
RUSSELL	2000/09/05																																			
B1	DRAFT WHERE APPLICABLE MUST REMAIN WITHIN DIMENSIONS	MATERIAL NO. 73927-0002 DOCUMENT NO. SD-73927-002 SHEET NO. 3 OF 6		MOLEX INCORPORATED																																
THIS DRAWING CONTAINS INFORMATION THAT IS PROPRIETARY TO MOLEX INCORPORATED AND SHOULD NOT BE USED WITHOUT WRITTEN PERMISSION																																				



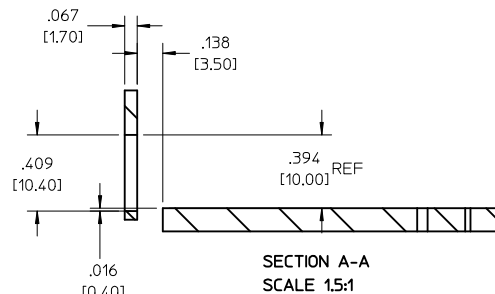
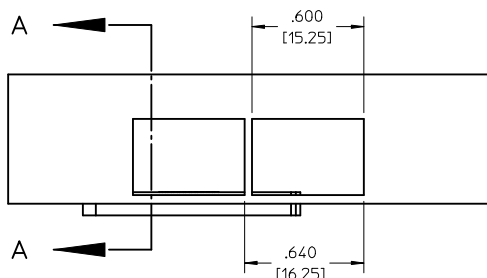
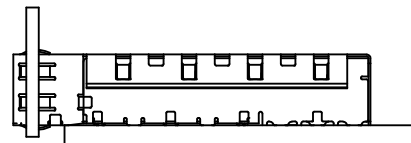
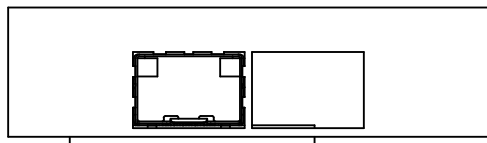
- ▲ Datum and basic dimensions established by customer.
- ▲ Vias and pads chassis ground, plated through, 11 places. Pads optional.
- ▲ Holes optionally plated through.
- 4. Hole pattern allows two parts to be mounted "belly-to-belly" on .090-.125" nom. boards. Hole layout shown for one side only. Transceiver profile determines minimum board thickness in "belly-to-belly" applications.
- 5. "Belly-to-belly" mounting on boards < .090" nom. requires modifying some cage features.

RE-RELEASE - FIX GLITCH EC NO: USY2010-0495 DRWN:MMCKERVEY 2010/04/19 CHKD:KJANOTA 2010/04/27 APPR:KJANOTA 2010/04/28	QUALITY SYMBOLS	GENERAL TOLERANCES (UNLESS SPECIFIED)	SCALE 3:1	DESIGN UNITS METRIC	THIRD ANGLE PROJECTION	REVISE ON CAD ONLY
	▼ = 0	mm INCH	DIMENSION STYLE IN/MM		TITLE	
	∇ = 0	4 PLACES ± --- ± ---	DRAWN BY DIRKERS	DATE 2000/09/05	SFP CAGE ASSEMBLY SOLDER POST VERSION	
		3 PLACES ± --- ± .005	CHECKED BY DOYE	DATE 2000/09/05		
	2 PLACES ± --- ± ---	1 PLACE ± 0.13 ± ---	APPROVED BY RUSSELL	DATE 2000/09/05	MOLEX INCORPORATED MATERIAL NO. 73927-0002 DOCUMENT NO. SD-73927-002 SHEET NO. 4 OF 6	
	ANGULAR ± 1/2°	DRAFT WHERE APPLICABLE MUST REMAIN WITHIN DIMENSIONS		THIS DRAWING CONTAINS INFORMATION THAT IS PROPRIETARY TO MOLEX INCORPORATED AND SHOULD NOT BE USED WITHOUT WRITTEN PERMISSION		



- 1 Hole pattern shown depicts both sets of holes needed for mounting two cages "belly-to-belly".
- 2 Connector pad pattern per MSA, will accommodate surface mount Molex connector 74441-0001 or equivalent.

RE-RELEASE - FIX GLITCH EC NO: USY2010-0495 DRWN: MMCKERVEY 2010/04/19 CHKD: KJANOTA 2010/04/27 APPR: KJANOTA 2010/04/28	QUALITY SYMBOLS ▽ = 0 ∇ = 0	GENERAL TOLERANCES (UNLESS SPECIFIED)		SCALE <b>3:1</b>	DESIGN UNITS <b>METRIC</b>	THIRD ANGLE PROJECTION	REVISE ON CAD ONLY																
		<table border="1"> <thead> <tr> <th></th> <th>mm</th> <th>INCH</th> </tr> </thead> <tbody> <tr> <td>4 PLACES</td> <td>± .---</td> <td>± .---</td> </tr> <tr> <td>3 PLACES</td> <td>± .---</td> <td>± .005</td> </tr> <tr> <td>2 PLACES</td> <td>± .---</td> <td>± .---</td> </tr> <tr> <td>1 PLACE</td> <td>± 0.13</td> <td>± .---</td> </tr> </tbody> </table>			mm	INCH	4 PLACES	± .---	± .---	3 PLACES	± .---	± .005	2 PLACES	± .---	± .---	1 PLACE	± 0.13	± .---	DIMENSION STYLE <b>IN/MM</b>		TITLE <b>SFP CAGE ASSEMBLY SOLDER POST VERSION</b>		
			mm	INCH																			
		4 PLACES	± .---	± .---																			
3 PLACES	± .---	± .005																					
2 PLACES	± .---	± .---																					
1 PLACE	± 0.13	± .---																					
DRAFT WHERE APPLICABLE MUST REMAIN WITHIN DIMENSIONS		APPROVED BY RUSSELL		DATE 2000/09/05	MATERIAL NO. <b>73927-0002</b>																		
B1		DESCRIPTION		DOYER 2000/09/05		DOCUMENT NO. <b>SD-73927-002</b>																	
				APPROVED BY RUSSELL		SHEET NO. 5 OF 6																	
				THIS DRAWING CONTAINS INFORMATION THAT IS PROPRIETARY TO MOLEX INCORPORATED AND SHOULD NOT BE USED WITHOUT WRITTEN PERMISSION																			



1 Relational geometry per MSA standard.

RE-RELEASE - FIX GLITCH  
 EC NO: USY2010-0495  
 DRWN:MMCKERVEY2010/04/19  
 CHKD:KJANOTA 2010/04/27  
 APPR:KJANOTA 2010/04/28

REV	DESCRIPTION
B1	

QUALITY SYMBOLS	GENERAL TOLERANCES (UNLESS SPECIFIED)	
	mm	INCH
= 0	4 PLACES ± ---	± ---
	3 PLACES ± ---	± .005
	2 PLACES ± ---	± ---
	1 PLACE ± 0.13	± ---
= 0	ANGULAR ± 1/2°	
	DRAFT WHERE APPLICABLE	
	MUST REMAIN WITHIN DIMENSIONS	

SCALE 3:1	DESIGN UNITS METRIC
DIMENSION STYLE IN/MM	
DRAWN BY DIRKERS	DATE 2000/09/05
CHECKED BY DOYE	DATE 2000/09/05
APPROVED BY RUSSELL	DATE 2000/09/05

	THIRD ANGLE PROJECTION	REVISE ON CAD ONLY
TITLE SFP CAGE ASSEMBLY SOLDER POST VERSION		
MATERIAL NO. 73927-0002		
DOCUMENT NO. SD-73927-002		SHEET NO. 6 OF 6
THIS DRAWING CONTAINS INFORMATION THAT IS PROPRIETARY TO MOLEX INCORPORATED AND SHOULD NOT BE USED WITHOUT WRITTEN PERMISSION		

20 19 18 17 16 15 14 13 12 11 10 9 8 7 6 5 4 3 2 1

M

L

K

J

I

H

G

F

E

D

C

B

A

M

L

K

J

I

H

G

F

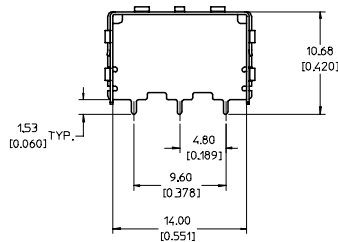
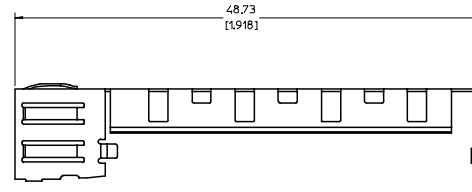
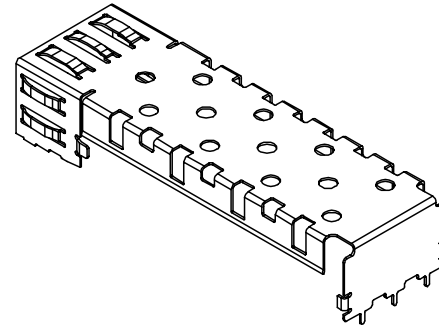
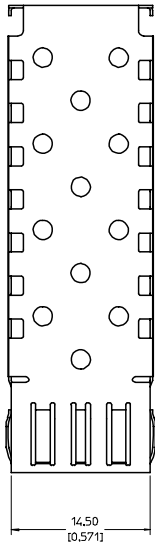
E

D

C

B

A



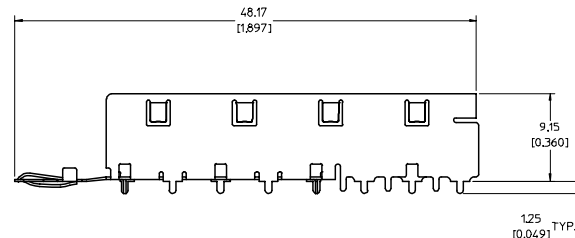
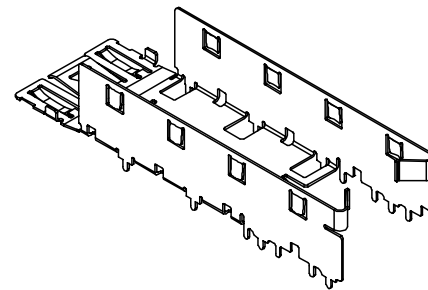
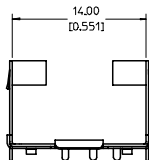
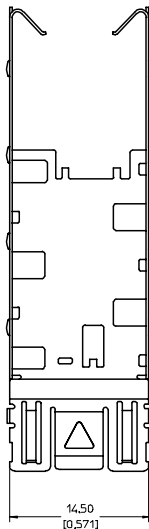
NOTES:

1. MATERIAL: COPPER ALLOY
2. PLATING: BRIGHT TIN  
2.54 MICROMETERS TIN (MIN)  
OVER 0.76 MICROMETERS (MIN) NICKEL
3. FOR DETAILS OF PCB AND BEZEL LAYOUT REFER TO DOCUMENT SD-73927-100.
4. THIS PRODUCT NOT INTENDED FOR LEAD FREE, (RoHS), REFLOW PROCESS.  
REFLOW TEMPERATURE SHOULD NOT EXCEED 180°C
5. FOR RoHS COMPLIANT REPLACEMENTS REFER TO MOLEX SERIES 74737.

<b>ENTER DESCRIPTION</b> EC NO: UST2006-0264 DRAWN BY: DRWNS/IMONSON 2006/07/03 CHECKED BY: CHKCB/BRUSSELL 2006/07/06 APPR: BRUSSELL 2006/07/24 A	QUALITY SYMBOLS	GENERAL TOLERANCES (UNLESS SPECIFIED)		DIMENSION STYLE		SCALE	DESIGN UNITS	THIRD ANGLE PROJECTION	
	▽=0 ▽=0	mm	INCH	MM/IN		4:1	METRIC		
		4 PLACES ± --- ± ---	3 PLACES ± --- ± .005	2 PLACES ± 0.13 ± .01	1 PLACE ± 0.25 ± ---	DRAWN BY: KS IMONSON 2005/10/12 CHECKED BY: BRUSSELL 2005/10/12 APPROVED BY: BRUSSELL 2005/10/12	TITLE: SFP CAGE COVER		
		ANGULAR ± 1 °		MATERIAL NO: 739270020		DOCUMENT NO: SD-73927-0020		SHEET NO: 1 OF 1	
DRAFT WHERE APPLICABLE MUST REMAIN WITHIN DIMENSIONS				THIS DRAWING CONTAINS INFORMATION THAT IS PROPRIETARY TO MOLEX INCORPORATED AND SHOULD NOT BE USED WITHOUT WRITTEN PERMISSION					

19 18 17 16 15 14 13 12 11 10 9 8 7 6 5 4 3 2 1





NOTES:

1. MATERIAL: COPPER ALLOY
2. PLATING: BRIGHT TIN  
2.54 MICROMETERS TIN (MIN)  
OVER 0.76 MICROMETERS (MIN) NICKEL
3. FOR DETAILS OF PCB AND BEZEL LAYOUT REFER TO DOCUMENT SD-73927-100.
4. THIS PRODUCT NOT INTENDED FOR LEAD FREE, (RoHS), REFLOW PROCESS. REFLOW TEMPERATURE SHOULD NOT EXCEED 180°C
5. FOR RoHS COMPLIANT REPLACEMENTS REFER TO MOLEX SERIES 74737.

ENTER DESCRIPTION EC NO: UST2006-0264 DRAWN BY: DRINKS IMONSON 2006/07/03 CHECKED BY: CHUCK BRUSSELL 2006/07/06 APPR: BRUSSELL 2006/07/24	QUALITY SYMBOLS	GENERAL TOLERANCES (UNLESS SPECIFIED)	DIMENSION STYLE	SCALE	DESIGN UNITS	THIRD ANGLE PROJECTION																		
	$\nabla=0$ $\nabla=0$	<table border="1"> <tr> <th></th> <th>mm</th> <th>INCH</th> </tr> <tr> <td>4 PLACES ±</td> <td>---</td> <td>---</td> </tr> <tr> <td>3 PLACES ±</td> <td>---</td> <td>±.005</td> </tr> <tr> <td>2 PLACES ±</td> <td>±0.13</td> <td>±.01</td> </tr> <tr> <td>1 PLACE ±</td> <td>±0.25</td> <td>---</td> </tr> <tr> <td>ANGULAR ±</td> <td colspan="2">1°</td> </tr> </table>		mm	INCH	4 PLACES ±	---	---	3 PLACES ±	---	±.005	2 PLACES ±	±0.13	±.01	1 PLACE ±	±0.25	---	ANGULAR ±	1°		MM/IN	4:1	METRIC	
		mm	INCH																					
	4 PLACES ±	---	---																					
3 PLACES ±	---	±.005																						
2 PLACES ±	±0.13	±.01																						
1 PLACE ±	±0.25	---																						
ANGULAR ±	1°																							
DESCRIPTION	<table border="1"> <tr> <th>DRAWN BY</th> <th>DATE</th> </tr> <tr> <td>KS IMONSON</td> <td>2005/10/12</td> </tr> <tr> <th>CHECKED BY</th> <th>DATE</th> </tr> <tr> <td>BRUSSELL</td> <td>2005/10/12</td> </tr> <tr> <th>APPROVED BY</th> <th>DATE</th> </tr> <tr> <td>BRUSSELL</td> <td>2005/10/12</td> </tr> </table>	DRAWN BY	DATE	KS IMONSON	2005/10/12	CHECKED BY	DATE	BRUSSELL	2005/10/12	APPROVED BY	DATE	BRUSSELL	2005/10/12	TITLE	SFP CAGE BASE SOLDER POSTS FOR WAVE SOLDER									
DRAWN BY	DATE																							
KS IMONSON	2005/10/12																							
CHECKED BY	DATE																							
BRUSSELL	2005/10/12																							
APPROVED BY	DATE																							
BRUSSELL	2005/10/12																							
REV		MATERIAL NO.	DOCUMENT NO.	SHEET NO.																				
A		739270040	SD-73927-0040	1 OF 1																				
		DRAFT WHERE APPLICABLE MUST REMAIN WITHIN DIMENSIONS																						
		THIS DRAWING CONTAINS INFORMATION THAT IS PROPRIETARY TO MOLEX INCORPORATED AND SHOULD NOT BE USED WITHOUT WRITTEN PERMISSION																						