



Chipsmall Limited consists of a professional team with an average of over 10 year of expertise in the distribution of electronic components. Based in Hongkong, we have already established firm and mutual-benefit business relationships with customers from,Europe,America and south Asia,supplying obsolete and hard-to-find components to meet their specific needs.

With the principle of "Quality Parts,Customers Priority,Honest Operation,and Considerate Service",our business mainly focus on the distribution of electronic components. Line cards we deal with include Microchip,ALPS,ROHM,Xilinx,Pulse,ON,Everlight and Freescale. Main products comprise IC,Modules,Potentiometer,IC Socket,Relay,Connector.Our parts cover such applications as commercial,industrial, and automotives areas.

We are looking forward to setting up business relationship with you and hope to provide you with the best service and solution. Let us make a better world for our industry!



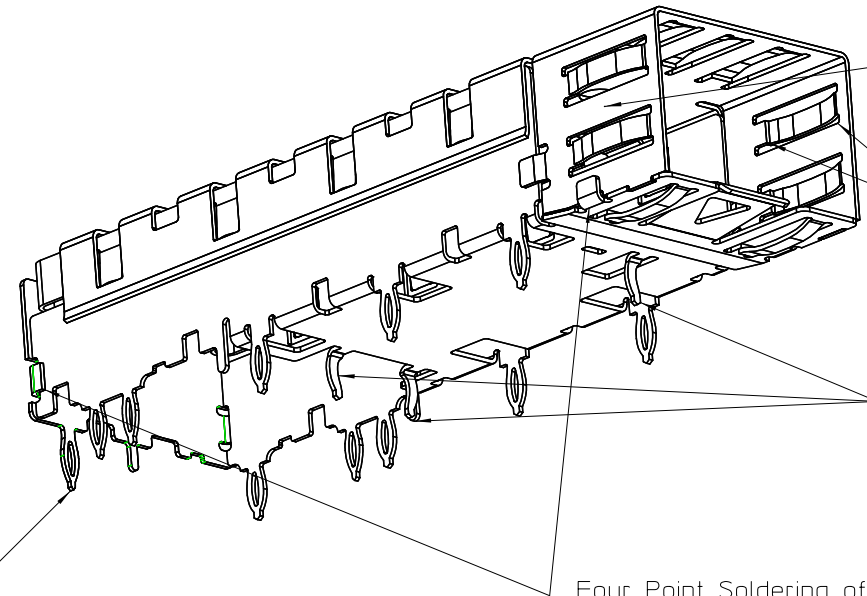
Contact us

Tel: +86-755-8981 8866 Fax: +86-755-8427 6832

Email & Skype: info@chipsmall.com Web: www.chipsmall.com

Address: A1208, Overseas Decoration Building, #122 Zhenhua RD., Futian, Shenzhen, China





Gaps Between Spring
Tabs <.120" (3.0mm)

Two Point EMI Ground Path
on Each of Nine Bezel Springs

Three Center EMI Pins

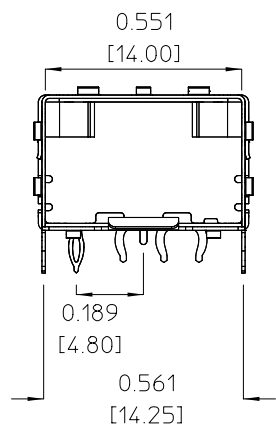
Four Point Soldering of
Top to Base (2 indicated)

Eleven press-fit (compliant) pins
for single sided use in .062+ (1.57+mm)
PCB's with tin plated through holes.

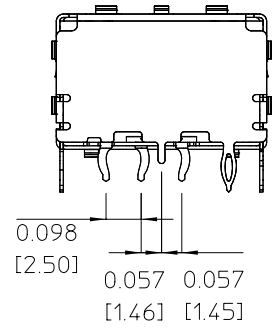
Dual side "belly-to-belly" use requires
.093" (2.36 mm) minimum PCB thickness.

Material full-hard, tin plated
brass or bronze .010" (0.25mm) thick.

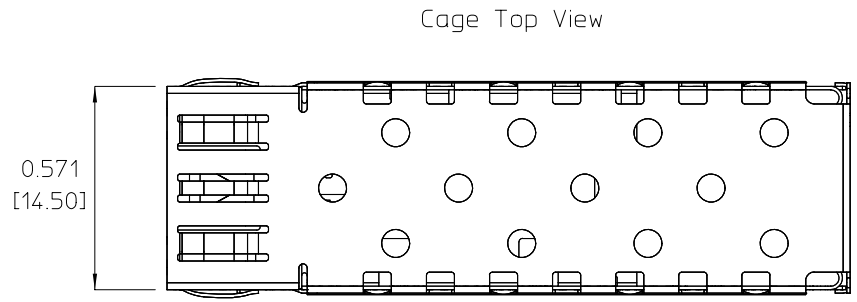
EC NO: USY2003-0028 IDRWN: KLOYD 2002/09/19 CHKD: BRUSSELL 2002/09/19 APPR: KLOYD 2002/10/01	QUALITY SYMBOLS ▴ = 0 ▽ = 0	GENERAL TOLERANCES (UNLESS SPECIFIED)		SCALE 3:1	DESIGN UNITS METRIC	THIRD ANGLE PROJECTION	REVISE ON CAD ONLY	
		4 PLACES ± --- ± ---	3 PLACES ± --- ± .002	DIMENSION STYLE IN/MM		TITLE SFP CAGE ASSEMBLY WITH 11 PRESS-FIT LEGS AND 3 EMI CLIPS		
		2 PLACES ± 0.05 ± ---	1 PLACE ± --- ± ---	DRAWN BY DIRKERS	DATE 2001/12/18	MOLEX INCORPORATED		
		ANGULAR ±1/2°		CHECKED BY BRUSSELL	DATE 2001/12/18	APPROVED BY BRUSSELL	DATE 2001/12/18	MATERIAL NO 73927-0008
DRAFT WHERE APPLICABLE MUST REMAIN WITHIN DIMENSIONS		THIS DRAWING CONTAINS INFORMATION THAT IS PROPRIETARY TO MOLEX INCORPORATED AND SHOULD NOT BE USED WITHOUT WRITTEN PERMISSION						



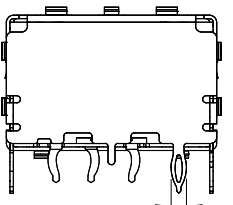
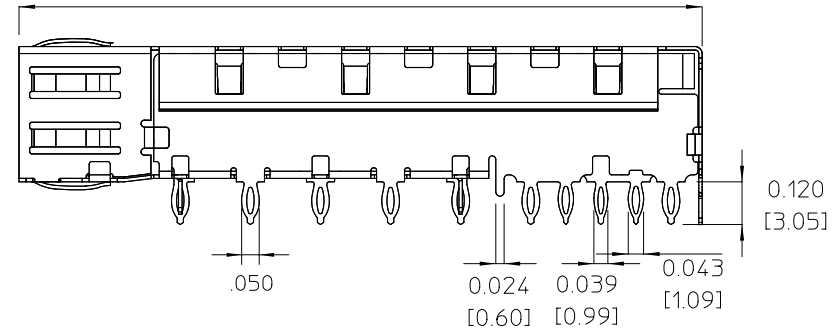
Cage Front View



Center EMI Pins

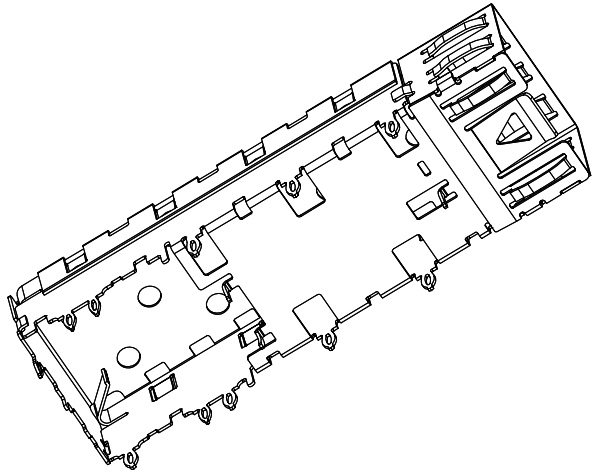


Cage Top View

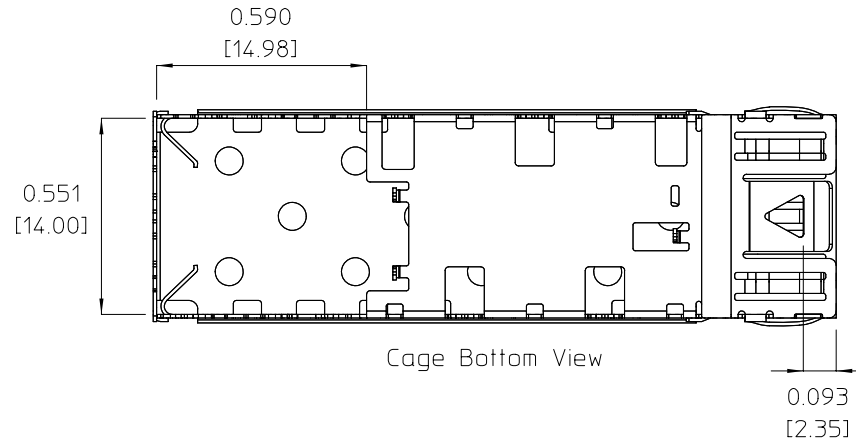
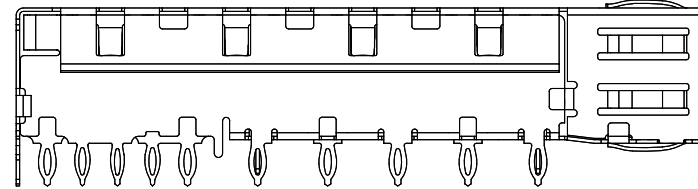


Cage Rear View

EC NO: USY2002-0826 DRWN: KLOYD 2002/09/19 CHKD: BRUSSELL 2002/09/19 APPR: KLOYD 2002/10/01	QUALITY SYMBOLS	GENERAL TOLERANCES (UNLESS SPECIFIED)	SCALE 3:1	DESIGN UNITS METRIC	THIRD ANGLE PROJECTION	REVISE ON CAD ONLY
	▴ = 0 ▽ = 0	4 PLACES ± --- ± --- 3 PLACES ± --- ± .002 2 PLACES ± 0.05 ± --- 1 PLACE ± --- ± --- ANGULAR ± 1/2°	DIMENSION STYLE IN/MM DRAWN BY DIRKERS DATE 2001/12/18 CHECKED BY BRUSSELL DATE 2001/12/18 APPROVED BY BRUSSELL DATE 2001/12/18	TITLE SFP CAGE ASSEMBLY WITH 11 PRESS-FIT LEGS AND 3 EMI CLIPS MOLEX INCORPORATED		
	DRAFT WHERE APPLICABLE MUST REMAIN WITHIN DIMENSIONS	MATERIAL NO 73927-0008 DOCUMENT NO SD-73927-008 SHEET NO 2 OF 7		THIS DRAWING CONTAINS INFORMATION THAT IS PROPRIETARY TO MOLEX INCORPORATED AND SHOULD NOT BE USED WITHOUT WRITTEN PERMISSION		
	REV					

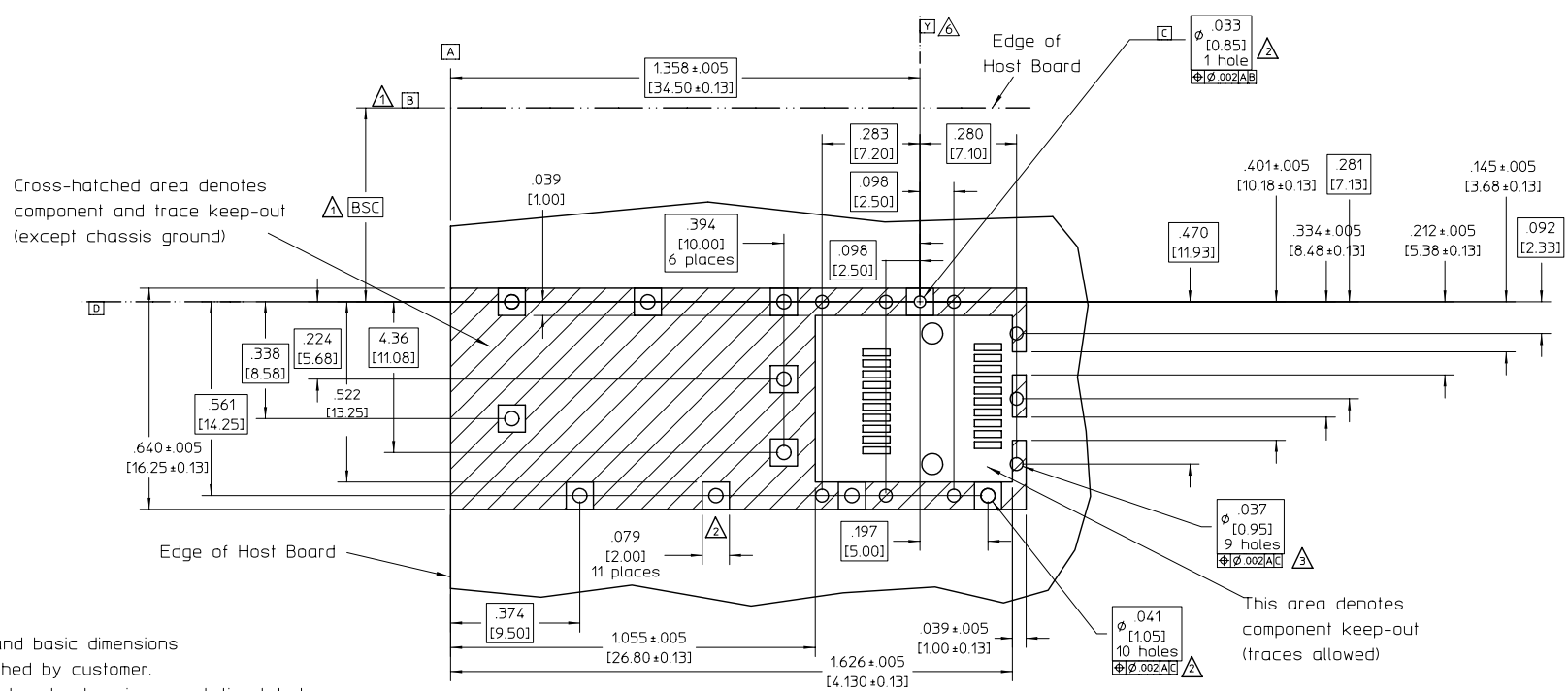


Isometric
Scale 2.5:1



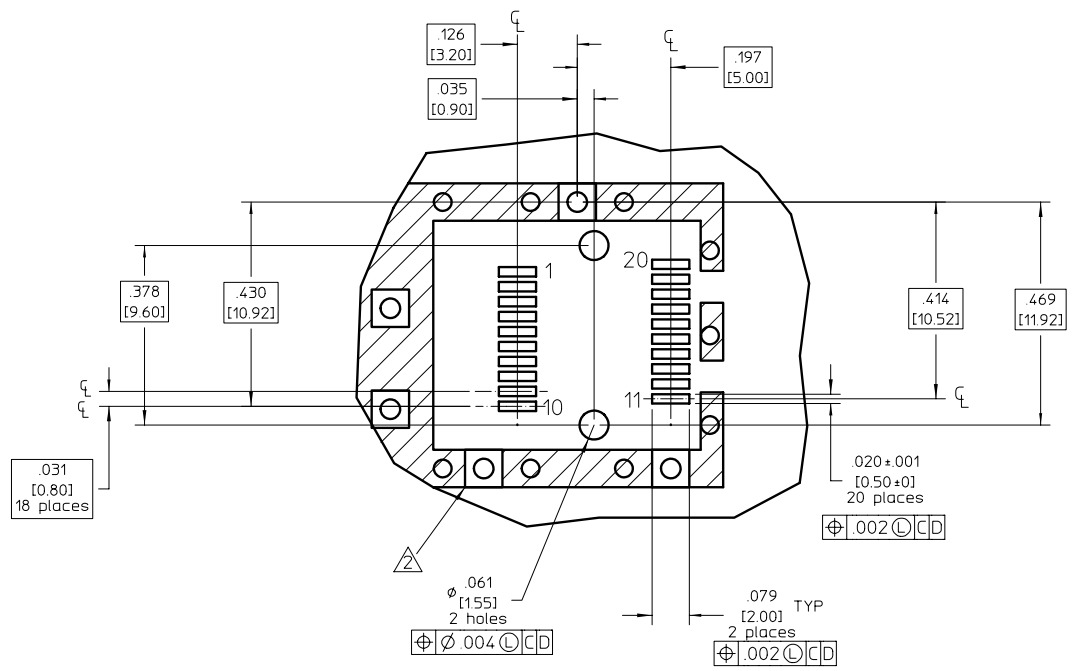
Cage Bottom View

EC NO: W5172002-00826 DRWN: KLOYD 2002/09/19 CHKD: BRUSSELL 2002/09/19 APPR: KLOYD 2002/10/01	QUALITY SYMBOLS ▽ = 0 ▽ = 0	GENERAL TOLERANCES (UNLESS SPECIFIED) 4 PLACES ± --- ± --- 3 PLACES ± --- ± .002 2 PLACES ± 0.05 ± --- 1 PLACE ± --- ± --- ANGULAR ± 1/2°	SCALE 3:1 DESIGN UNITS METRIC DIMENSION STYLE IN/MM DRAWN BY DIRKERS DATE 2001/12/18 CHECKED BY BRUSSELL DATE 2001/12/18 APPROVED BY BRUSSELL DATE 2001/12/18	THIRD ANGLE PROJECTION TITLE SFP CAGE ASSEMBLY WITH 11 PRESS-FIT LEGS AND 3 EMI CLIPS MOLEX INCORPORATED	REVISE ON CAD ONLY SHEET NO. 3 OF 7
	DRAFT WHERE APPLICABLE MUST REMAIN WITHIN DIMENSIONS	MATERIAL NO. 73927-0008 DOCUMENT NO. SD-73927-008	THIS DRAWING CONTAINS INFORMATION THAT IS PROPRIETARY TO MOLEX INCORPORATED AND SHOULD NOT BE USED WITHOUT WRITTEN PERMISSION	B	
	THIS DRAWING CONTAINS INFORMATION THAT IS PROPRIETARY TO MOLEX INCORPORATED AND SHOULD NOT BE USED WITHOUT WRITTEN PERMISSION				
	THIS DRAWING CONTAINS INFORMATION THAT IS PROPRIETARY TO MOLEX INCORPORATED AND SHOULD NOT BE USED WITHOUT WRITTEN PERMISSION				



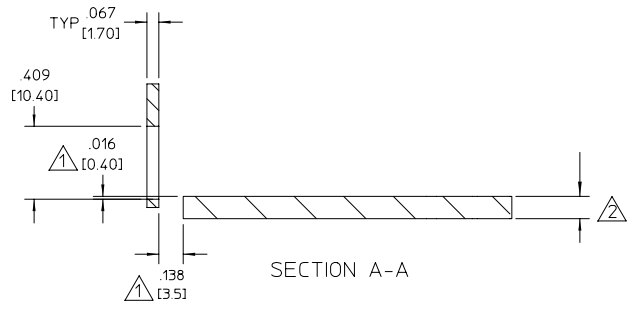
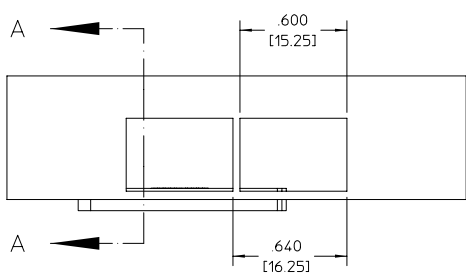
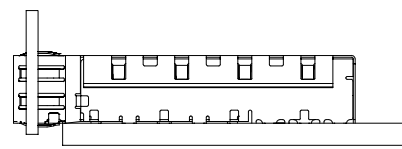
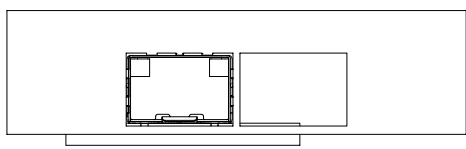
- ▲ Datum and basic dimensions established by customer.
- ▲ Vias and pads chassis ground, tin plated through, 11 places. Pads optional.
- ▲ Holes optionally plated through.
- 4 Hole pattern allows two parts to be mounted "belly-to-belly" on .093"+ nom. boards. Hole layout shown for one side only. Transceiver profile determines minimum board thickness in "belly-to-belly" applications.
- ▲ Cage datum Y shown for reference to cage, only.

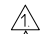

EC NO: UST2002-0826 DRWN: KLOYD 2002/09/19 CHKD: BRUSSELL 2002/09/19 APPR: KLOYD 2002/10/01	QUALITY SYMBOLS ▼ = 0 ▽ = 0	GENERAL TOLERANCES (UNLESS SPECIFIED)		SCALE 3:1	DESIGN UNITS METRIC	THIRD ANGLE PROJECTION	REVISE ON CAD ONLY		
		4 PLACES ± --- ± ---	3 PLACES ± --- ± .002	DIMENSION STYLE IN/MM		TITLE SFP CAGE ASSEMBLY WITH 11 PRESS-FIT LEGS AND 3 EMI CLIPS			
		2 PLACES ± 0.05 ± ---	1 PLACE ± --- ± ---	DRAWN BY DIRKERS DATE 2001/12/18		MOLEX INCORPORATED			
		ANGULAR ± 1/2°		CHECKED BY BRUSSELL DATE 2001/12/18		MATERIAL NO 73927-0008			
		DRAFT WHERE APPLICABLE MUST REMAIN WITHIN DIMENSIONS		APPROVED BY BRUSSELL DATE 2001/12/18		DOCUMENT NO SD-73927-008	SHEET NO 4 OF 7		


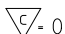


1. Connector pad pattern per MSA, will accommodate surface mount Molex connector 74441 or equivalent.
 ⚠ Cage mounting pads not required for press-fit application.

EC NO: USY2002-0826 DRWN: KLOYD 2002/09/19 CHKD: BRUSSELL 2002/09/19 APPR: KLOYD 2002/10/01	QUALITY SYMBOLS	GENERAL TOLERANCES (UNLESS SPECIFIED)		SCALE 4:1	DESIGN UNITS METRIC	THIRD ANGLE PROJECTION	REVISE ON CAD ONLY
	▽ = 0	4 PLACES	± .002	mm	INCH	TITLE	
	∇ = 0	3 PLACES	± .002	± .002	± .002	SFP CAGE ASSEMBLY WITH 11 PRESS-FIT LEGS AND 3 EMI CLIPS	
		2 PLACES	± 0.05	± .002	± .002	MATERIAL NO. 73927-0008	
		1 PLACE	± .002	± .002	± .002	DOCUMENT NO. SD-73927-008	
		ANGULAR ±1/2°		DRAFT WHERE APPLICABLE MUST REMAIN WITHIN DIMENSIONS		SHEET NO. 5 OF 7	
				APPROVED BY: BRUSSELL 2001/12/18		INCORPORATED AND SHOULD NOT BE USED WITHOUT WRITTEN PERMISSION	



 Relational geometry per MSA standard
 See sheet 1 for PCB thickness details.

EC NO: USY2002-0826 DRWN: KLOYD 2002/09/19 CHKD: BRUSSELL 2002/09/19 APPR: KLOYD 2002/10/01	QUALITY SYMBOLS  0  0	GENERAL TOLERANCES (UNLESS SPECIFIED) <table border="1"> <thead> <tr> <th></th> <th>mm</th> <th>INCH</th> </tr> </thead> <tbody> <tr> <td>4 PLACES</td> <td>± .005</td> <td>± .002</td> </tr> <tr> <td>3 PLACES</td> <td>± .005</td> <td>± .002</td> </tr> <tr> <td>2 PLACES</td> <td>± 0.05</td> <td>± .002</td> </tr> <tr> <td>1 PLACE</td> <td>± .005</td> <td>± .002</td> </tr> </tbody> </table>		mm	INCH	4 PLACES	± .005	± .002	3 PLACES	± .005	± .002	2 PLACES	± 0.05	± .002	1 PLACE	± .005	± .002	SCALE 1.5:1 DESIGN UNITS METRIC DIMENSION STYLE IN/MM	THIRD ANGLE PROJECTION REVISE ON CAD ONLY	TITLE SFP CAGE ASSEMBLY WITH 11 PRESS-FIT LEGS AND 3 EMI CLIPS
		mm	INCH																	
4 PLACES	± .005	± .002																		
3 PLACES	± .005	± .002																		
2 PLACES	± 0.05	± .002																		
1 PLACE	± .005	± .002																		
DESCRIPTION SFP CAGE ASSEMBLY WITH 11 PRESS-FIT LEGS AND 3 EMI CLIPS	DRAFT WHERE APPLICABLE MUST REMAIN WITHIN DIMENSIONS	CHECKED BY DATE BRUSSELL 2001/12/18	DRAWN BY DATE DIRKERS 2001/12/18	MATERIAL NO 73927-0008	DOCUMENT NO SD-73927-008															
APPROVED BY DATE BRUSSELL 2001/12/18	SHEET NO 6 OF 7	THIS DRAWING CONTAINS INFORMATION THAT IS PROPRIETARY TO MOLEX INCORPORATED AND SHOULD NOT BE USED WITHOUT WRITTEN PERMISSION																		

DATE	REV	CHANGES	REASONS	APPROVAL
2001/06/30	A	INITIAL DRAWING		CD
2002/01/31	B	SHEET 1,B9&C4&E2: TEXT CHANGE. SHEET 4,B9: TEXT CHANGE SHEET 6, B9: TEXT CHANGE, D3: NOTE ADDED	REMOVE 3 EMI PINS. REPLACE WITH COUNTERCUTS. CUSTOMER REQUEST.	CD
2002/09/19	C	SHEET 1,B9&C4&E2: TEXT CHANGE. SHEET 4,B9: TEXT CHANGE SHEET 6, B9: TEXT CHANGE, D3: NOTE ADDED	CORRECTION	KL

EC NO: USY2003-0028 DRAWN: KLOYD 2002/09/19 CHK: BRUSSELL APPR: KLOYD 2002/10/01	QUALITY SYMBOLS	GENERAL TOLERANCES (UNLESS SPECIFIED)	SCALE 1:1	DESIGN UNITS METRIC	THIRD ANGLE PROJECTION	REVISE ON CAD ONLY															
	▽ = 0 ∇ = 0	<table border="1"> <tr> <td></td> <td>mm</td> <td>INCH</td> </tr> <tr> <td>4 PLACES</td> <td>± ---</td> <td>± ---</td> </tr> <tr> <td>3 PLACES</td> <td>± ---</td> <td>± .002</td> </tr> <tr> <td>2 PLACES</td> <td>± 0.05</td> <td>± ---</td> </tr> <tr> <td>1 PLACE</td> <td>± ---</td> <td>± ---</td> </tr> </table>		mm	INCH	4 PLACES	± ---	± ---	3 PLACES	± ---	± .002	2 PLACES	± 0.05	± ---	1 PLACE	± ---	± ---	DIMENSION STYLE IN/MM	TITLE SFP CAGE ASSEMBLY WITH 11 PRESS-FIT LEGS AND 3 EMI CLIPS		
			mm	INCH																	
		4 PLACES	± ---	± ---																	
		3 PLACES	± ---	± .002																	
2 PLACES	± 0.05	± ---																			
1 PLACE	± ---	± ---																			
ANGULAR ± 1/2 °	DRAWN BY DIRKERS	DATE 2001/12/18	Molex MOLEX INCORPORATED																		
DRAFT WHERE APPLICABLE MUST REMAIN WITHIN DIMENSIONS	CHECKED BY BRUSSELL	DATE 2001/12/18	APPROVED BY BRUSSELL	DATE 2001/12/18	MATERIAL NO. 739270008	DOCUMENT NO. SD-73927-008	SHEET NO. 7 OF 7														
	THIS DRAWING CONTAINS INFORMATION THAT IS PROPRIETARY TO MOLEX INCORPORATED AND SHOULD NOT BE USED WITHOUT WRITTEN PERMISSION					B															