



Chipsmall Limited consists of a professional team with an average of over 10 year of expertise in the distribution of electronic components. Based in Hongkong, we have already established firm and mutual-benefit business relationships with customers from,Europe,America and south Asia,supplying obsolete and hard-to-find components to meet their specific needs.

With the principle of “Quality Parts,Customers Priority,Honest Operation,and Considerate Service”,our business mainly focus on the distribution of electronic components. Line cards we deal with include Microchip,ALPS,ROHM,Xilinx,Pulse,ON,Everlight and Freescale. Main products comprise IC,Modules,Potentiometer,IC Socket,Relay,Connector.Our parts cover such applications as commercial,industrial, and automotives areas.

We are looking forward to setting up business relationship with you and hope to provide you with the best service and solution. Let us make a better world for our industry!



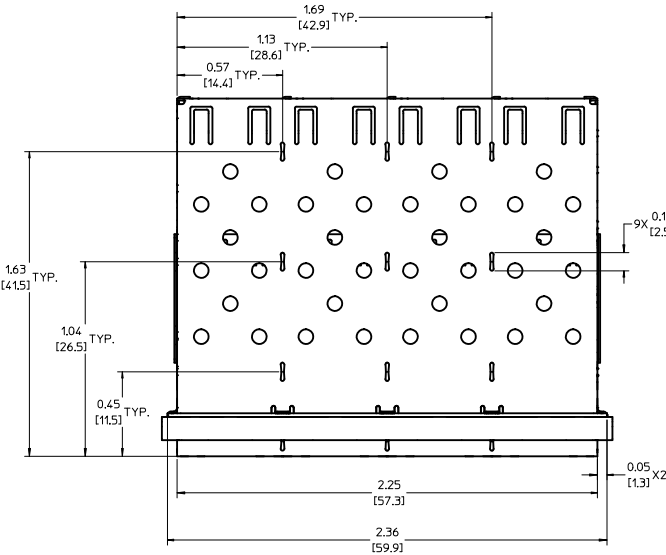
Contact us

Tel: +86-755-8981 8866 Fax: +86-755-8427 6832

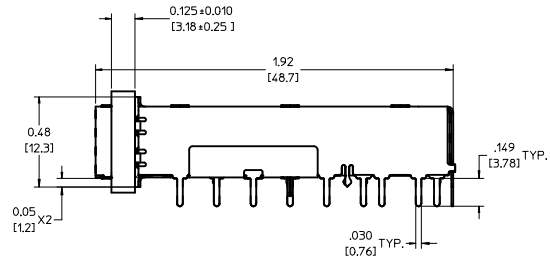
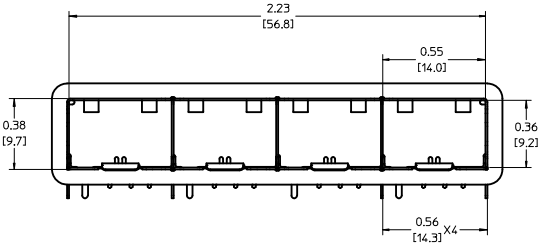
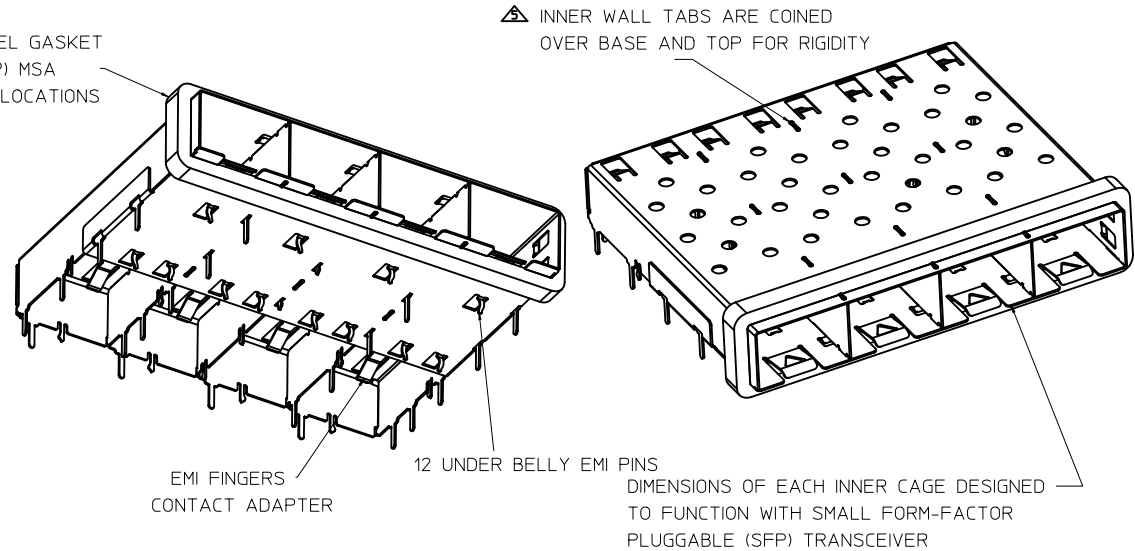
Email & Skype: info@chipsmall.com Web: www.chipsmall.com

Address: A1208, Overseas Decoration Building, #122 Zhenhua RD., Futian, Shenzhen, China





360° SOFT EMI BEZEL GASKET COMPLIES WITH (SFP) MSA BOARD AND BEZEL LOCATIONS



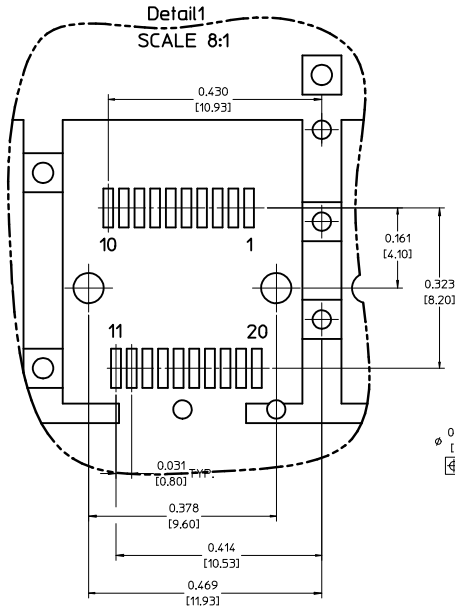
NOTES:

- SOLDER POSTS 0.149" LONG.
- MATERIAL: COPPER ALLOY
 PLATING: NONE

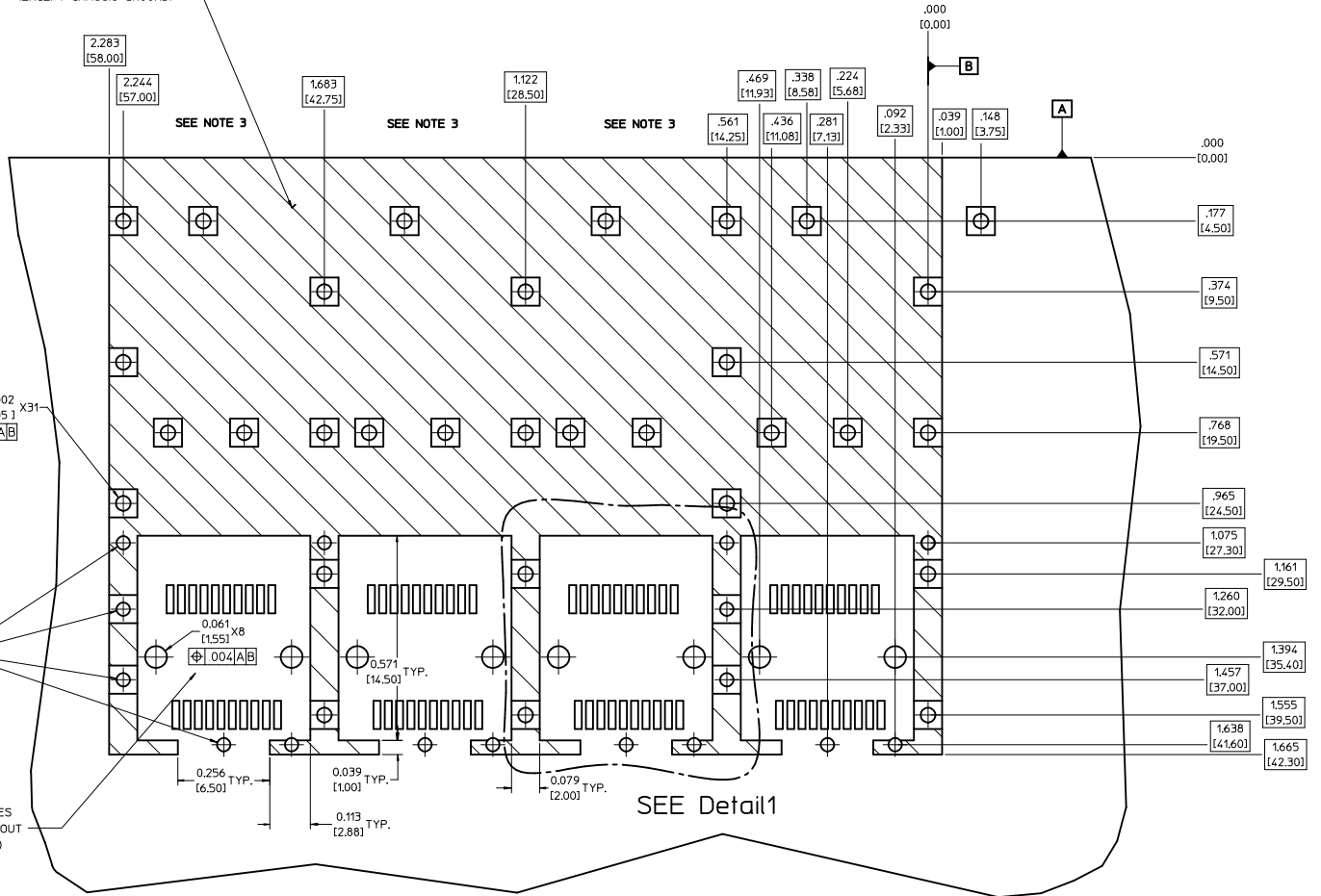
 NOTE: A NICKEL PLATED VERSION OF THIS ASSEMBLY IS AVAILABLE. REFER TO DOCUMENT SD-74728-421.
- REFERENCE DOCUMENTS:
 PRODUCT SPECIFICATION: PS-74728-000
 COSMETIC SPECIFICATIONS: WI-HP-7-2774 AND WI-HPA-7-0093
- THIS PART MEETS THE RESTRICTION OF HAZARDOUS SUBSTANCES IN ELECTRICAL AND ELECTRONIC EQUIPMENT (ROHS) DIRECTIVE (2002/95/EC).

ENTER DESCRIPTION IEC NO.: USY2011-0270 DRAWN BY: INSKI 2010/10/19 CHKD.: APPR: KJANOTA 2010/10/21	QUALITY SYMBOLS	GENERAL TOLERANCES (UNLESS SPECIFIED)	DIMENSION STYLE	SCALE	DESIGN UNITS	THIRD ANGLE PROJECTION	
	▼=0 ▽=0	mm INCH 4 PLACES ± --- ± --- 3 PLACES ± --- ± .005 2 PLACES ± 0.13 ± .01 1 PLACE ± 0.25 ± --- ANGULAR ± 1°	IN/MM	3:1	METRIC	DRAWN BY: KLOYD DATE: 2003/03/05 CHECKED BY: MI SKIN DATE: 2003/03/05 APPROVED BY: KJANOTA DATE: 2010/10/21	
	DRAFT WHERE APPLICABLE MUST REMAIN WITHIN DIMENSIONS		MATERIAL NO.	DOCUMENT NO.	TITLE		MOLEX INCORPORATED SHEET NO. 1 OF 4
			739270402	SD-73927-402	1X4 SFP GANGED CAGE ASSEMBLY, SOLDER POSTS		

PCB LAYOUT FOR SINGLE SIDE MOUNTING



CROSS-HATCHED AREA DENOTES
COMPONENT AND TRACE KEEP-OUT
(EXCEPT CHASSIS GROUND)



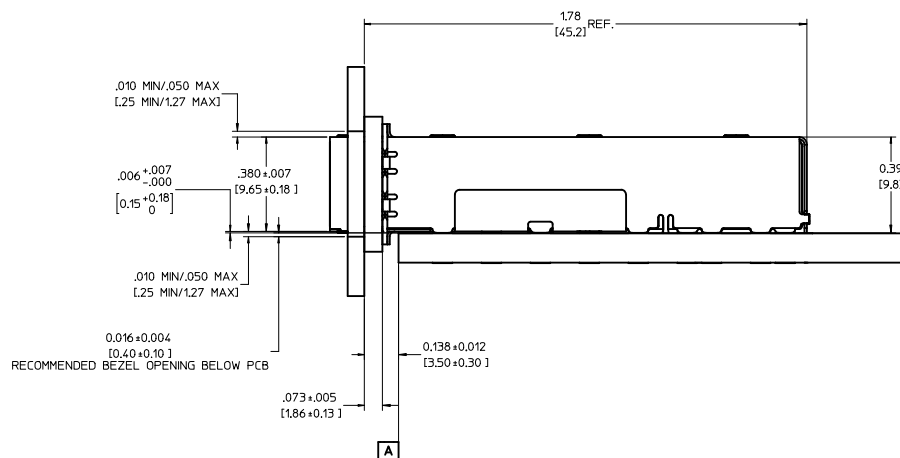
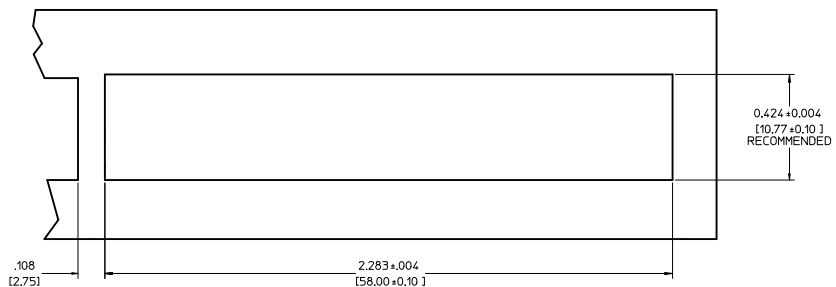
NOTES:

- PADS AND VIAS GO TO CHASSIS GROUND. (34 PLACES).
RECOMMENDED PADS TO BE 2mm SQUARE.
- PLATING OPTIONAL FOR THROUGH HOLES. (12 PLACES).
- RECOMMENDED PLATING INCLUDES HASL, IMMERSION (GOLD, SILVER, OR TIN), AND OSP.
- HOLE PATTERN REPEATS FOR EACH PORT,
SPACING BETWEEN PORTS IS 14.25mm.
- CONNECTOR PAD LAYOUT PER SFP MSA. WILL ACCOMODATE MOLEX
CONNECTOR SERIES 74441 OR EQUIVALENT.

ENTER DESCRIPTION EC NO: USJ2011-0270 DRAWN/RM/KL/NSK 2010/10/19 CHKD: KJANOTA APPR/K: JANOTA 2010/10/21	QUALITY SYMBOLS	GENERAL TOLERANCES (UNLESS SPECIFIED)	DIMENSION STYLE	SCALE	DESIGN UNITS	THIRD ANGLE PROJECTION
	▽=0 ▽=0	mm INCH 4 PLACES ±--- ±--- 3 PLACES ±--- ±.005 2 PLACES ±0.13 ±.01 1 PLACE ±0.25 ±--- ANGULAR ± 1°	IN/MM	6:1	METRIC	
	DRAWN BY: K LLOYD CHECKED BY: M M SKIN APPROVED BY: K JANOTA DATE: 2003/03/05 DATE: 2003/03/05 DATE: 2010/10/21	TITLE 1X4 SFP GANGED CAGE ASSEMBLY, SOLDER POSTS		MOLEX INCORPORATED		
	MATERIAL NO. 739270402	DOCUMENT NO. SD-73927-402	SHEET NO. 2 OF 4		THIS DRAWING CONTAINS INFORMATION THAT IS PROPRIETARY TO MOLEX INCORPORATED AND SHOULD NOT BE USED WITHOUT WRITTEN PERMISSION	

20 19 18 17 16 15 14 13 12 11 10 9 8 7 6 5 4 3 2 1

BEZEL AND BOARD POSITION DIMENSIONS FOR SINGLE SIDE MOUNTING



ENTER DESCRIPTION EC NO: USY2011-0270 DRAWN BY: KJANOTA 2010/10/21 CHKD: MIMSKIN APPR: KJANOTA	QUALITY SYMBOLS ▽=0 ▽=0	GENERAL TOLERANCES (UNLESS SPECIFIED) <table border="1"> <thead> <tr> <th></th> <th>mm</th> <th>INCH</th> </tr> </thead> <tbody> <tr> <td>4 PLACES</td> <td>± .005</td> <td>± .0005</td> </tr> <tr> <td>3 PLACES</td> <td>± .01</td> <td>± .001</td> </tr> <tr> <td>2 PLACES</td> <td>± 0.13</td> <td>± .01</td> </tr> <tr> <td>1 PLACE</td> <td>± 0.25</td> <td>± .01</td> </tr> </tbody> </table> ANGULAR ± 1°		mm	INCH	4 PLACES	± .005	± .0005	3 PLACES	± .01	± .001	2 PLACES	± 0.13	± .01	1 PLACE	± 0.25	± .01	DIMENSION STYLE IN/MM	SCALE 4:1	DESIGN UNITS METRIC	THIRD ANGLE PROJECTION
		mm	INCH																		
	4 PLACES	± .005	± .0005																		
	3 PLACES	± .01	± .001																		
2 PLACES	± 0.13	± .01																			
1 PLACE	± 0.25	± .01																			
DRAWN BY: KJANOTA 2010/10/21 DATE: 2010/10/21	CHECKED BY: MIMSKIN 2010/10/21 DATE: 2010/10/21	APPROVED BY: KJANOTA 2010/10/21 DATE: 2010/10/21	MATERIAL NO. 739270402	DOCUMENT NO. SD-73927-402	TITLE 1X4 SFP GANGED CAGE ASSEMBLY, SOLDER POSTS	SHEET NO. 3 OF 4															
DRAFT WHERE APPLICABLE MUST REMAIN WITHIN DIMENSIONS			THIS DRAWING CONTAINS INFORMATION THAT IS PROPRIETARY TO MOLEX INCORPORATED AND SHOULD NOT BE USED WITHOUT WRITTEN PERMISSION																		
MOLEX INCORPORATED																					

19 18 17 16 15 14 13 12 11 10 9 8 7 6 5 4 3 2 1

20 19 18 17 16 15 14 13 12 11 10 9 8 7 6 5 4 3 2 1

DATE MONTH/DAY/YEAR	REV	CHANGES	COMMENTS
9/12/02	A	INITIAL RELEASE	N/A
5/20/03	B	MOVED PCB LAYOUT AND BEZEL DETAILS TO DOCUMENT SD-73927-400	N/A
3/25/04	C	UPDATED VIEWS FOR COVER MODIFICATIONS	N/A
10/12/04	D	UPDATED VIEWS	DOCUMENT CHANGE ONLY
10/07/05	E	ADD PCB AND BEZEL LAYOUT. UPDATED NOTES.	DOCUMENT CHANGE ONLY
10/19/10	F	COINED INNER WALL TAB LENGTH FROM 0.10 INCH [2.5 MM] +/- .01 INCH [0.25 MM] TO MAXIMUM	DOCUMENT CHANGE ONLY

ENTER DESCRIPTION IEC NO: USY2011-0270 TDR: DRW:RMI/IKL INSK 2010/10/19 CHKD: [blank] APPR: K.JANOTA 2010/10/21	QUALITY SYMBOLS ▽=0 ▽=0	GENERAL TOLERANCES (UNLESS SPECIFIED)		DIMENSION STYLE IN/MM	SCALE 1:1	DESIGN UNITS METRIC	THIRD ANGLE PROJECTION	
		4 PLACES ±.005 ±.005 3 PLACES ±.01 ±.01 2 PLACES ±0.13 ±.01 1 PLACE ±0.25 ±.01 ANGULAR ± 1°	DRAWN BY K.LLOYD 2003/03/05 CHECKED BY M.MISKIN 2003/03/05 APPROVED BY K.JANOTA 2010/10/21	TITLE 1X4 SFP GANGED CAGE ASSEMBLY, SOLDER POSTS		MATERIAL NO. 739270402		DOCUMENT NO. SD-73927-402
DRAFT WHERE APPLICABLE MUST REMAIN WITHIN DIMENSIONS		SIZE D		THIS DRAWING CONTAINS INFORMATION THAT IS PROPRIETARY TO MOLEX INCORPORATED AND SHOULD NOT BE USED WITHOUT WRITTEN PERMISSION				SHEET NO. 4 OF 4

19 18 17 16 15 14 13 12 11 10 9 8 7 6 5 4 3 2 1