



Chipsmall Limited consists of a professional team with an average of over 10 year of expertise in the distribution of electronic components. Based in Hongkong, we have already established firm and mutual-benefit business relationships with customers from,Europe,America and south Asia,supplying obsolete and hard-to-find components to meet their specific needs.

With the principle of “Quality Parts,Customers Priority,Honest Operation,and Considerate Service”,our business mainly focus on the distribution of electronic components. Line cards we deal with include Microchip,ALPS,ROHM,Xilinx,Pulse,ON,Everlight and Freescale. Main products comprise IC,Modules,Potentiometer,IC Socket,Relay,Connector.Our parts cover such applications as commercial,industrial, and automotives areas.

We are looking forward to setting up business relationship with you and hope to provide you with the best service and solution. Let us make a better world for our industry!



Contact us

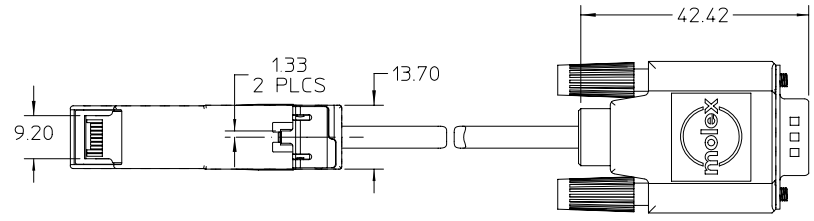
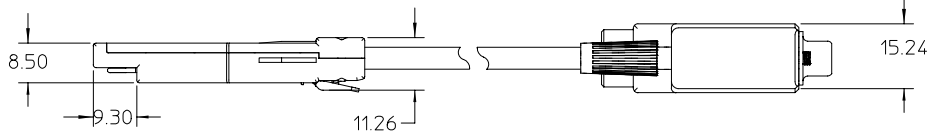
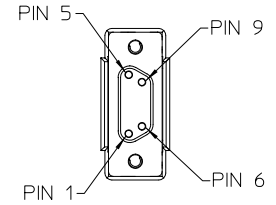
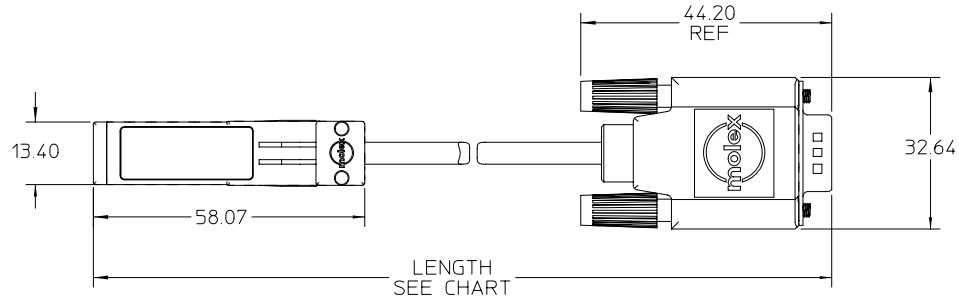
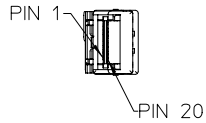
Tel: +86-755-8981 8866 Fax: +86-755-8427 6832

Email & Skype: info@chipsmall.com Web: www.chipsmall.com

Address: A1208, Overseas Decoration Building, #122 Zhenhua RD., Futian, Shenzhen, China



WIRING DIAGRAM			
SFP		DB-9	
PIN	SIGNAL	PIN	SIGNAL
19	Tx-	9	Rx-
18	Tx+	5	Rx+
13	Rx+	1	Tx+
12	Rx-	6	Tx-



PART NUMBER	LENGTH
73929-1001	1 M ± 0.05 M
73929-1002	3 M ± 0.07 M
73929-1003	5 M ± 0.08 M
73929-1005	2 M ± 0.06 M
73929-1006	4 M ± 0.07 M

SFP NOTES:

- MATERIALS
BACKSHELLS - NICKEL PLATED ZINC
LATCH - GLASS FILLED POLYCARBONATE
PCB - FR-4
RIVETS - TIN PLATED STEEL
- IMPEDANCE MATCHING SFP (100 OHMS) TO DB-9 (150 OHMS)

DB-9 NOTES:

- MATERIALS
CONTACTS - GOLD PLATED BRASS
SHIELD - TIN PLATED STEEL
BOOT - BLACK PVC
JACKSCREWS
SCREW - STEEL
HEAD - PVC
- CHARACTERISTIC IMPEDANCE 150 ± 10 OHMS MEASURED DIFFERENTIAL

CABLE NOTES:

- CHARACTERISTIC IMPEDANCE 150 ± 10 OHMS MEASURED DIFFERENTIAL
- SEE MOLEX DRAWINGS SD-71153-7*** FOR FURTHER DETAILS

EC NO: UOT20026803 DRWN: DSLEWIS 2002/03/08 CHK: DDOYE 2002/02/12 APPR: DDOYE 2002/02/14	QUALITY SYMBOLS	GENERAL TOLERANCES (UNLESS SPECIFIED)	SCALE 1:1	DESIGN UNITS METRIC	THIRD ANGLE PROJECTION	REVISE ON CAD ONLY															
	-0 C=0	<table border="1"> <thead> <tr> <th></th> <th>mm</th> <th>INCH</th> </tr> </thead> <tbody> <tr> <td>4 PLACES</td> <td>± ---</td> <td>± ---</td> </tr> <tr> <td>3 PLACES</td> <td>± ---</td> <td>± ---</td> </tr> <tr> <td>2 PLACES</td> <td>± 0.25</td> <td>± ---</td> </tr> <tr> <td>1 PLACE</td> <td>± 0.3</td> <td>± ---</td> </tr> </tbody> </table>		mm	INCH	4 PLACES	± ---	± ---	3 PLACES	± ---	± ---	2 PLACES	± 0.25	± ---	1 PLACE	± 0.3	± ---	DIMENSION STYLE MM ONLY	TITLE	SFP PLUG TO MALE DB-9 FIBRE CHANNEL (150 OHM) CABLE ASSEMBLY	
			mm	INCH																	
		4 PLACES	± ---	± ---																	
3 PLACES	± ---	± ---																			
2 PLACES	± 0.25	± ---																			
1 PLACE	± 0.3	± ---																			
DRAFT WHERE APPLICABLE	APPROVED BY DATE	MATERIAL NO. DOCUMENT NO. SHEET NO.		MOLEX INCORPORATED																	
MUST REMAIN WITHIN DIMENSIONS	DLD 1002/12/17	739291001 SD-73929-100 1 OF 1		THIS DRAWING CONTAINS INFORMATION THAT IS PROPRIETARY TO MOLEX INCORPORATED AND SHOULD NOT BE USED WITHOUT WRITTEN PERMISSION																	