



Chipsmall Limited consists of a professional team with an average of over 10 year of expertise in the distribution of electronic components. Based in Hongkong, we have already established firm and mutual-benefit business relationships with customers from,Europe,America and south Asia,supplying obsolete and hard-to-find components to meet their specific needs.

With the principle of "Quality Parts,Customers Priority,Honest Operation,and Considerate Service",our business mainly focus on the distribution of electronic components. Line cards we deal with include Microchip,ALPS,ROHM,Xilinx,Pulse,ON,Everlight and Freescale. Main products comprise IC,Modules,Potentiometer,IC Socket,Relay,Connector.Our parts cover such applications as commercial,industrial, and automotives areas.

We are looking forward to setting up business relationship with you and hope to provide you with the best service and solution. Let us make a better world for our industry!



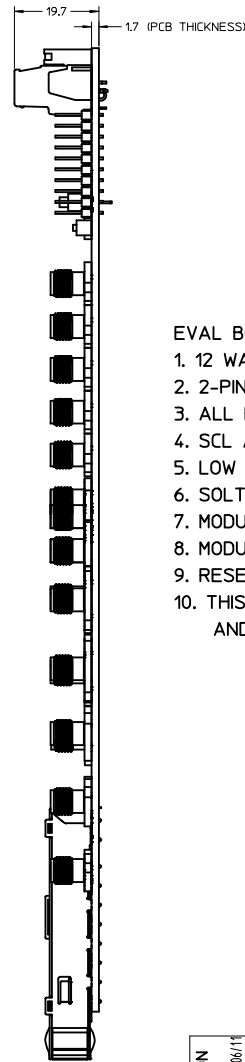
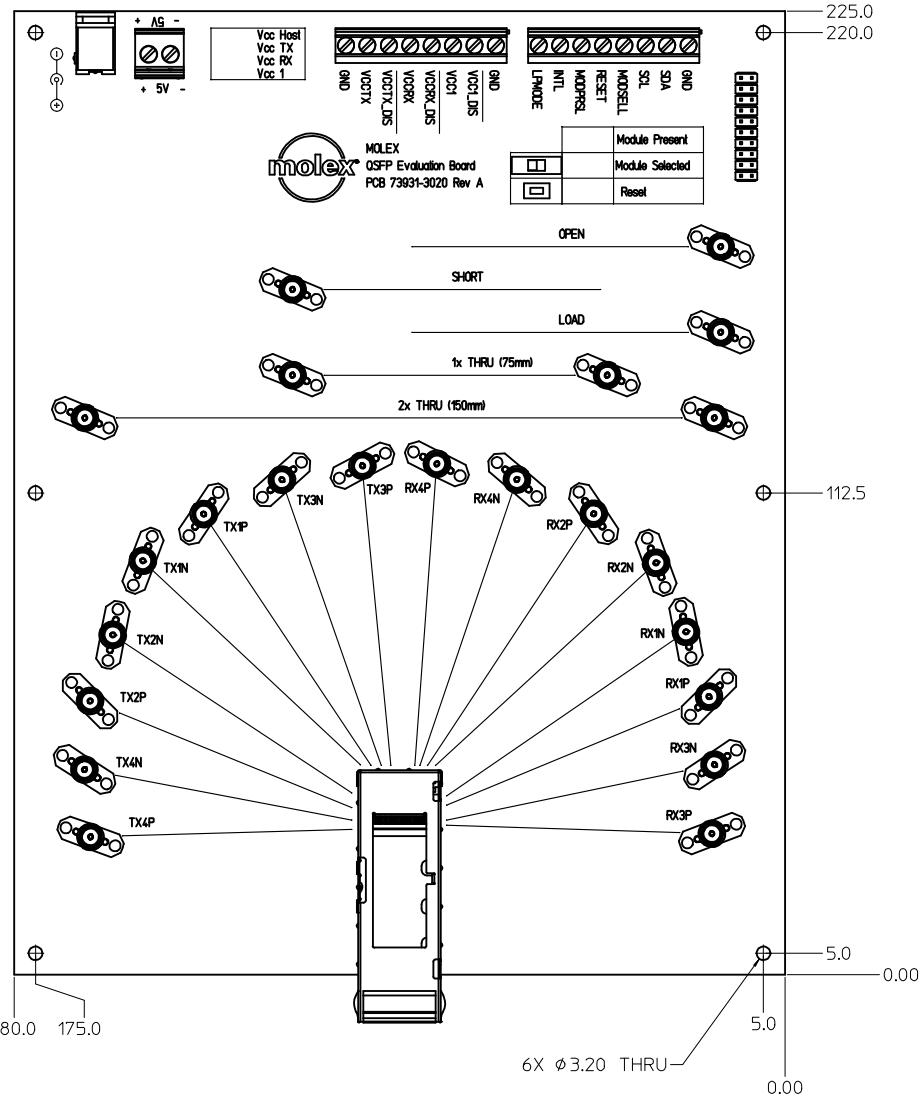
Contact us

Tel: +86-755-8981 8866 Fax: +86-755-8427 6832

Email & Skype: info@chipsmall.com Web: www.chipsmall.com

Address: A1208, Overseas Decoration Building, #122 Zhenhua RD., Futian, Shenzhen, China





EVAL BOARD FEATURES:

- 12 WATT, 5V WALL TRANSFORMER INCLUDED WITH EVAL BOARD
- 2-PIN TERMINAL BLOCK AVAILABLE FOR BENCH TOP POWER SUPPLY CONNECTION
- ALL HIGH SPEED PAIRS LENGTH MATCHED.
- SCL AND SDA TERMINAL BLOCK CONNECTIONS FOR I2C CONTROL
- LOW SPEED SIGNAL AND POWER TERMINAL CONNECTIONS FOR EASY ACCESSIBILITY.
- SOLT CAL STRUCTURES (SHORT, OPEN, LOAD, 1X THRU, AND 2X THRU)
- MODULE PRESENT LED INDICATOR
- MODULE SELECT SWITCH
- RESET SWITCH
- THIS PRODUCT MEETS THE RESTRICTION OF HAZARDOUS SUBSTANCES IN ELECTRICAL AND ELECTRONIC EQUIPMENT (RoHS) DIRECTIVE (2002/95/EC).

ENTER DESCRIPTION IEC NO: USY2009-0558 DRAWN BY: CHRISCHY 2009/06/11 CHECKED BY: CHYKORAHMOOD 2009/06/22 APPR: RAHMOOD 2009/06/23	QUALITY SYMBOLS ▽=0 ▽=0 ▽=0	GENERAL TOLERANCES (UNLESS SPECIFIED)		DIMENSION STYLE MM ONLY	SCALE 1.75:1	DESIGN UNITS METRIC	THIRD ANGLE PROJECTION			
		4 PLACES ±--- ±---	3 PLACES ±--- ±---	2 PLACES ±0.13 ±---	1 PLACE ±0.25 ±---	ANGULAR ± 1°	DRAFT WHERE APPLICABLE MUST REMAIN WITHIN DIMENSIONS	DRAWN BY: CHRISCHY 2009/06/10 CHECKED BY: GBWALZ 2009/06/10 APPROVED BY: RAHMOOD 2009/06/10	DATE: _____ DATE: _____ DATE: _____	TITLE OSFP EVALUATION BOARD
		MATERIAL NO. 739313022		DOCUMENT NO. SD-73931-3022		SHEET NO. 1 OF 1		MOLEX INCORPORATED		
		THIS DRAWING CONTAINS INFORMATION THAT IS PROPRIETARY TO MOLEX INCORPORATED AND SHOULD NOT BE USED WITHOUT WRITTEN PERMISSION								