



Chipsmall Limited consists of a professional team with an average of over 10 year of expertise in the distribution of electronic components. Based in Hongkong, we have already established firm and mutual-benefit business relationships with customers from,Europe,America and south Asia,supplying obsolete and hard-to-find components to meet their specific needs.

With the principle of “Quality Parts,Customers Priority,Honest Operation,and Considerate Service”,our business mainly focus on the distribution of electronic components. Line cards we deal with include Microchip,ALPS,ROHM,Xilinx,Pulse,ON,Everlight and Freescale. Main products comprise IC,Modules,Potentiometer,IC Socket,Relay,Connector.Our parts cover such applications as commercial,industrial, and automotives areas.

We are looking forward to setting up business relationship with you and hope to provide you with the best service and solution. Let us make a better world for our industry!



Contact us

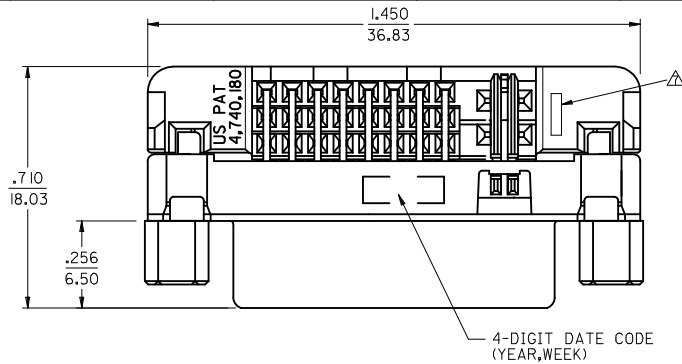
Tel: +86-755-8981 8866 Fax: +86-755-8427 6832

Email & Skype: info@chipsmall.com Web: www.chipsmall.com

Address: A1208, Overseas Decoration Building, #122 Zhenhua RD., Futian, Shenzhen, China

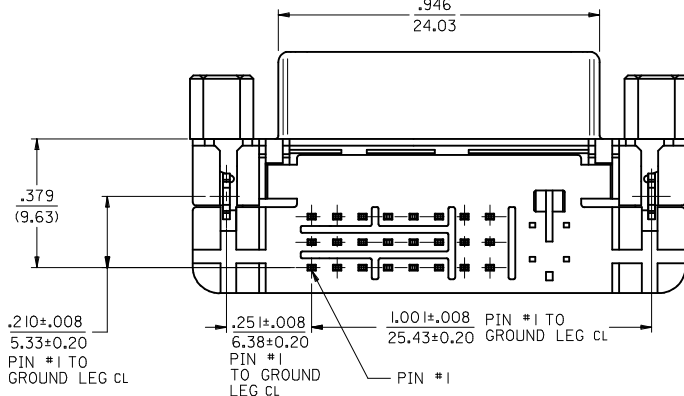
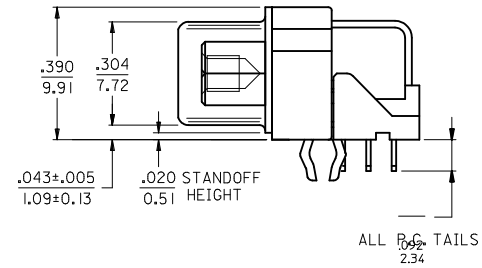
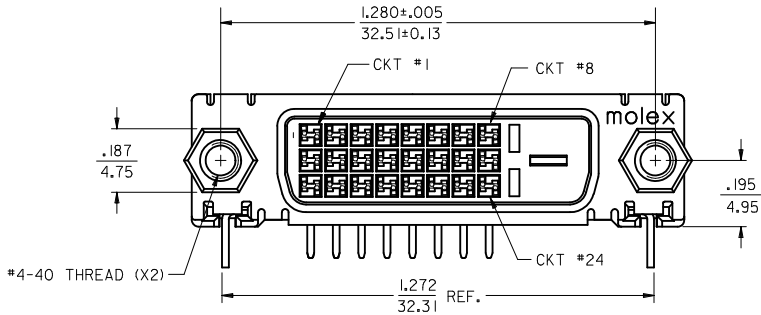
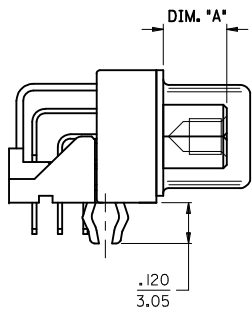


PART NUMBER	DIM *A*	PLATING OPTION
74320-9020	.187 4.75	1 (30µ Au)
74320-9024		2 (Au FLASH)
74320-9224	.236 6.00	

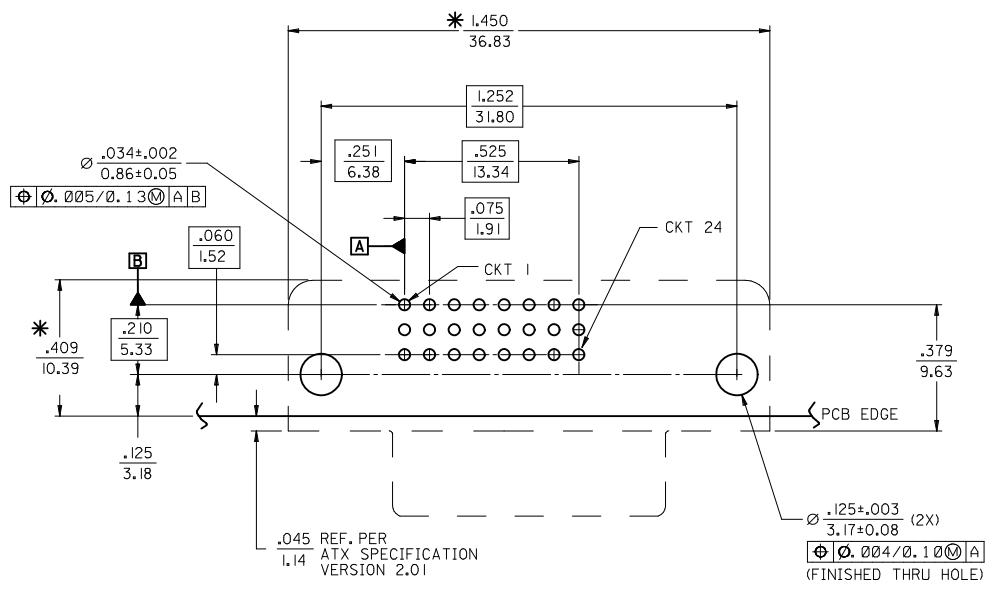


NOTES:

- MATERIALS:
SHIELD -- DEEP DRAW STEEL.
HOUSING -- GLASS FILLED POLYMER, WHITE/NATURAL, UL 94v-0.
TAIL ALIGNER -- GLASS FILLED POLYMER, WHITE/NATURAL, UL 94v-0.
CONTACTS -- COPPER ALLOY.
MICROCROSS GROUND -- COPPER ALLOY.
JACKPOSTS -- STEEL, ZINC PLATE W/CLEAR CHROMATE.
 - PLATING: SEE SHEET 2
 - PRODUCT CONFORMS TO MOLEX PRODUCT SPECIFICATION PS-74320-001.
 - SEE SHEET 2 FOR RECOMMENDED P.C.B. LAYOUT.
 - PARTS WILL BE PACKAGED IN TRAYS.
 - PRODUCT CONFORMS TO DDWG DVI SPECIFICATION, REFER TO THIS SPECIFICATION FOR CONNECTOR INTERFACE DIMENSIONS.
- △ CAVITY NO. AND MANUFACTURING PLANT CODE.

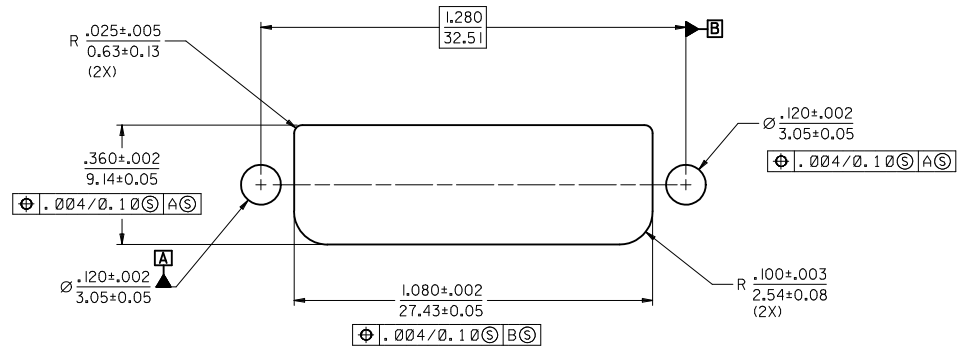


REV	DESCRIPTION	QUALITY SYMBOLS	GENERAL TOLERANCES (UNLESS SPECIFIED)		DIMENSION STYLE		SCALE	DESIGN UNITS	THIRD ANGLE PROJECTION	
			mm	INCH	IN/MM	1:1	INCH			
REVISE	EC NO: SH2012-0047	▽=0	4 PLACES	± ---	± ---	DRAWN BY	DATE	TITLE	DVI-D/ATX RIGHT ANGLE RECEPTACLE CONNECTOR W/JACKPOSTS	
DRWN:XJ.SONG	2011/08/19	∇=0	3 PLACES	± ---	± .010	TMCCLELL	99/12/07	MOLEX INCORPORATED		
CHKD:XJ.SONG	2011/08/19		2 PLACES	± 0.25	± .010	CHECKED BY	DATE		SD-74320-027	SHEET NO.
APPR:RZHANG	2011/08/22		1 PLACE	± 0.25	± .010	SCHMIDGA	99/12/07	1 OF 2		
			ANGULAR ±1/2°			APPROVED BY	DATE	DOCUMENT NO.		
			DRAFT WHERE APPLICABLE MUST REMAIN WITHIN DIMENSIONS			NELSON	99/12/07	SEE TABLE		
						MATERIAL NO.	THIS DRAWING CONTAINS INFORMATION THAT IS PROPRIETARY TO MOLEX INCORPORATED AND SHOULD NOT BE USED WITHOUT WRITTEN PERMISSION			



RECOMMENDED PCB LAYOUT
COMPONENT SIDE OF PCB SHOWN

* THESE DIMENSIONS REPRESENT CONNECTOR OVERLAY ON PCB.



RECOMMENDED PANEL CUT-OUT
PANEL THICKNESS: .030" - .040"

PLATING OPTIONS:

- PLATING OPTION #1:
 OUTER SHIELD -- 150u"/(3.75um) MIN. BRIGHT TIN OVER 50u"/(1.27um) MIN. NICKEL OVER COPPER FLASH
 .075"/(1.91mm) CONTACTS -- 30u"/(0.75um) MIN. SELECT GOLD AND 100u"/(2.50um) MIN. SELECT PURE TIN OVER 50u"/(1.27um) MIN. NICKEL OVERALL.
- PLATING OPTION #2:
 OUTER SHIELD -- 150u"/(3.75um) MIN. BRIGHT TIN OVER 50u"/(1.27um) MIN. NICKEL OVER COPPER FLASH
 .075"/(1.91mm) CONTACTS -- SELECT GOLD FLASH AND 100u"/(2.50um) MIN. SELECT PURE TIN OVER 50u"/(1.27um) MIN. NICKEL OVERALL.

SEE SHEET1 EC NO: SH2012-0047 DRWN:XJ SONG 2011/08/19 CHKD:XJ SONG 2011/08/19 APPR:RZHANG 2011/08/22	QUALITY SYMBOLS	GENERAL TOLERANCES (UNLESS SPECIFIED)	DIMENSION STYLE	SCALE	DESIGN UNITS	THIRD ANGLE PROJECTION
	▽=0 ∇=0	mm INCH	IN/MM	1:1	INCH	

DRAWN BY TMCCLELL 99/12/07	DATE 99/12/07	CHECKED BY SCHMIDGA 99/12/07	DATE 99/12/07	APPROVED BY NELSON 99/12/07	DATE 99/12/07	MATERIAL NO. SEE SHEET1	DOCUMENT NO. SD-74320-027	SHEET NO. 2 OF 2

DVI-D/ATX RIGHT ANGLE RECEPTACLE CONNECTOR W/JACKPOSTS
MOLEX INCORPORATED
 THIS DRAWING CONTAINS INFORMATION THAT IS PROPRIETARY TO MOLEX INCORPORATED AND SHOULD NOT BE USED WITHOUT WRITTEN PERMISSION