



Chipsmall Limited consists of a professional team with an average of over 10 year of expertise in the distribution of electronic components. Based in Hongkong, we have already established firm and mutual-benefit business relationships with customers from,Europe,America and south Asia,supplying obsolete and hard-to-find components to meet their specific needs.

With the principle of “Quality Parts,Customers Priority,Honest Operation,and Considerate Service”,our business mainly focus on the distribution of electronic components. Line cards we deal with include Microchip,ALPS,ROHM,Xilinx,Pulse,ON,Everlight and Freescale. Main products comprise IC,Modules,Potentiometer,IC Socket,Relay,Connector.Our parts cover such applications as commercial,industrial, and automotives areas.

We are looking forward to setting up business relationship with you and hope to provide you with the best service and solution. Let us make a better world for our industry!



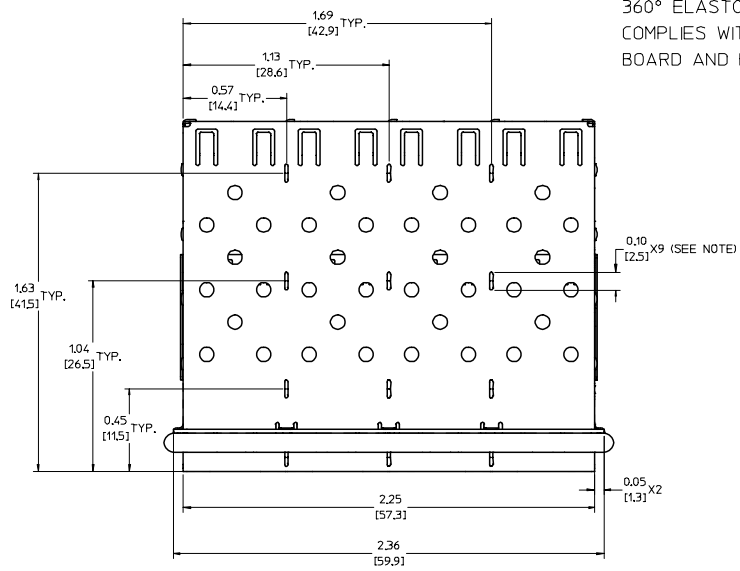
## Contact us

Tel: +86-755-8981 8866 Fax: +86-755-8427 6832

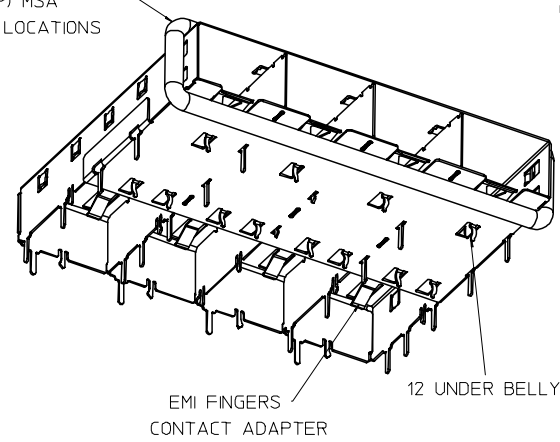
Email & Skype: info@chipsmall.com Web: www.chipsmall.com

Address: A1208, Overseas Decoration Building, #122 Zhenhua RD., Futian, Shenzhen, China

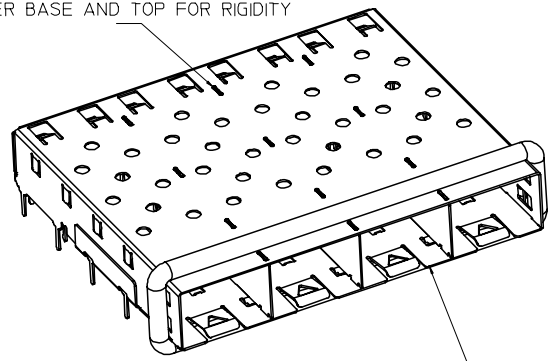




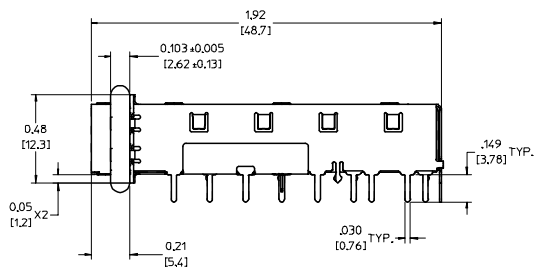
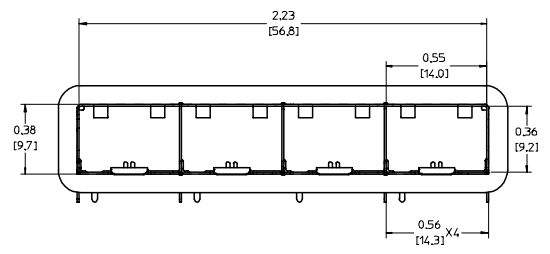
360° ELASTOMER GASKET  
COMPLIES WITH (SFP) MSA  
BOARD AND BEZEL LOCATIONS



INNER WALL TABS ARE COINED  
OVER BASE AND TOP FOR RIGIDITY



DIMENSIONS OF EACH INNER CAGE DESIGNED  
TO FUNCTION WITH SMALL FORM-FACTOR  
PLUGGABLE (SFP) TRANSCEIVER



NOTES:

- SOLDER POSTS .145' LONG -
- .062 [1.57] MINIMUM PCB THICKNESS FOR SINGLE SIDED USE.
- .150 [3.81] MINIMUM PCB THICKNESS FOR BELLY TO BELLY USE.
- REFER TO DOCUMENT SD-74728-410 FOR DETAILS ON PCB LAYOUT,  
BOARD POSITIONING, AND BEZEL OPENING.
- ADJACENT PORTS ARE SPACED .561 [14.25] APART.
- MATERIAL: COPPER ALLOY.

|  |                 |  |  |   |                        |                    |
|--|-----------------|--|--|---|------------------------|--------------------|
| EC NO: USY2005-0037<br>DRAWN: K SIMONSO 2004/10/09<br>CHKD: BRUSSELL 2004/10/09<br>APPR: BRUSSELL 2004/10/13<br>REV: A | QUALITY SYMBOLS | GENERAL TOLERANCES (UNLESS SPECIFIED)  | SCALE 3:1  | DESIGN UNITS METRIC   | THIRD ANGLE PROJECTION | REVISE ON CAD ONLY |
|  | 0.0<br>0.1      | 4 PLACES ± --- ± ---<br>3 PLACES ± --- ± .005<br>2 PLACES ± 0.13 ± .01<br>1 PLACE ± 0.25 ± --- | DIMENSION STYLE IN/MM<br>DRAWN BY DATE<br>K SIMONSO 2004/10/09 | TITLE   |                        |                    |
|  |                 | ANGULAR ± 1°<br>DRAFT WHERE APPLICABLE MUST REMAIN WITHIN DIMENSIONS                           | CHECKED BY DATE<br>BRUSSELL 2004/10/09                         | 1X4 SFP CAGE ASSY,<br>W/ 0.103 GASKET, SOLDER<br>POST, F/ LIGHT PIPES |                        |                    |
|  |                 |  | APPROVED BY DATE<br>BRUSSELL 2004/10/09                        | MATERIAL NO. 747280412<br>DOCUMENT NO. SD-74728-412                   | SHEET NO. 1 OF 2       | MOLEX INCORPORATED |

20 | 19 | 18 | 17 | 16 | 15 | 14 | 13 | 12 | 11 | 74728 | 9 | 8 | 7 | 6 | 5 | 4 | 3 | 2 | 1

L  
K  
J  
I  
H  
G  
F  
E  
D  
C  
B  
A

L  
K  
J  
I  
H  
G  
F  
E  
D  
C  
B  
A

| DATE       | REV | CHANGES         | COMMENTS |
|------------|-----|-----------------|----------|
| 2004/10/09 | A   | INITIAL RELEASE | N/A      |
|            |     |                 |          |
|            |     |                 |          |

| EC NO: USY2005-0037<br>P: DRW:KSIMONSO 2004/10/09<br>CHKD:BRUSSELL 2004/10/09<br>APPR:BRUSSELL 2004/10/13<br>REV: A | QUALITY SYMBOLS | GENERAL TOLERANCES (UNLESS SPECIFIED)   | SCALE 1:1   | DESIGN UNITS METRIC | THIRD ANGLE PROJECTION  | REVISE ON CAD ONLY |        |        |          |        |        |          |        |        |         |        |        |  |                 |  |       |      |                   |            |                     |            |                      |            |  |  |  |
|---|-----------------|---|---|---------------------|---|--------------------|--------|--------|----------|--------|--------|----------|--------|--------|---------|--------|--------|--|-----------------|--|-------|------|-------------------|------------|---------------------|------------|----------------------|------------|--|--|--|
|   | ▽-0             | <table border="1"> <thead> <tr> <th></th> <th>mm</th> <th>INCH</th> </tr> </thead> <tbody> <tr> <td>4 PLACES</td> <td>±.0005</td> <td>±.0002</td> </tr> <tr> <td>3 PLACES</td> <td>±.0015</td> <td>±.0005</td> </tr> <tr> <td>2 PLACES</td> <td>±.0030</td> <td>±.0010</td> </tr> <tr> <td>1 PLACE</td> <td>±.0075</td> <td>±.0025</td> </tr> </tbody> </table> |   | mm                  | INCH  | 4 PLACES           | ±.0005 | ±.0002 | 3 PLACES | ±.0015 | ±.0005 | 2 PLACES | ±.0030 | ±.0010 | 1 PLACE | ±.0075 | ±.0025 | <table border="1"> <thead> <tr> <th colspan="2">DIMENSION STYLE</th> </tr> <tr> <th>IN/MM</th> <th>DATE</th> </tr> </thead> <tbody> <tr> <td>DRAWN BY KSIMONSO</td> <td>2004/10/09</td> </tr> <tr> <td>CHECKED BY BRUSSELL</td> <td>2004/10/09</td> </tr> <tr> <td>APPROVED BY BRUSSELL</td> <td>2004/10/09</td> </tr> </tbody> </table> | DIMENSION STYLE |  | IN/MM | DATE | DRAWN BY KSIMONSO | 2004/10/09 | CHECKED BY BRUSSELL | 2004/10/09 | APPROVED BY BRUSSELL | 2004/10/09 | TITLE: 1X4 SFP CAGE ASSY, W/ 0.103 GASKET, SOLDER POST, F/ LIGHT PIPES<br>MOLEX INCORPORATED |  |  |
|   |                 | mm  | INCH  |                     |   |                    |        |        |          |        |        |          |        |        |         |        |        |  |                 |  |       |      |                   |            |                     |            |                      |            |  |  |  |
|   | 4 PLACES        | ±.0005  | ±.0002  |                     |   |                    |        |        |          |        |        |          |        |        |         |        |        |  |                 |  |       |      |                   |            |                     |            |                      |            |  |  |  |
| 3 PLACES  | ±.0015          | ±.0005  |   |                     |   |                    |        |        |          |        |        |          |        |        |         |        |        |  |                 |  |       |      |                   |            |                     |            |                      |            |  |  |  |
| 2 PLACES  | ±.0030          | ±.0010  |   |                     |   |                    |        |        |          |        |        |          |        |        |         |        |        |  |                 |  |       |      |                   |            |                     |            |                      |            |  |  |  |
| 1 PLACE   | ±.0075          | ±.0025  |   |                     |   |                    |        |        |          |        |        |          |        |        |         |        |        |  |                 |  |       |      |                   |            |                     |            |                      |            |  |  |  |
| DIMENSION STYLE   |                 |   |   |                     |   |                    |        |        |          |        |        |          |        |        |         |        |        |  |                 |  |       |      |                   |            |                     |            |                      |            |  |  |  |
| IN/MM   | DATE            |   |   |                     |   |                    |        |        |          |        |        |          |        |        |         |        |        |  |                 |  |       |      |                   |            |                     |            |                      |            |  |  |  |
| DRAWN BY KSIMONSO   | 2004/10/09      |   |   |                     |   |                    |        |        |          |        |        |          |        |        |         |        |        |  |                 |  |       |      |                   |            |                     |            |                      |            |  |  |  |
| CHECKED BY BRUSSELL   | 2004/10/09      |   |   |                     |   |                    |        |        |          |        |        |          |        |        |         |        |        |  |                 |  |       |      |                   |            |                     |            |                      |            |  |  |  |
| APPROVED BY BRUSSELL  | 2004/10/09      |   |   |                     |   |                    |        |        |          |        |        |          |        |        |         |        |        |  |                 |  |       |      |                   |            |                     |            |                      |            |  |  |  |
| ▽0  | ANGULAR ± 1°    | DRAFT WHERE APPLICABLE MUST REMAIN WITHIN DIMENSIONS  | MATERIAL NO. 747280412<br>DOCUMENT NO. SD-74728-412 | SHEET NO. 2 OF 2    | THIS DRAWING CONTAINS INFORMATION THAT IS PROPRIETARY TO MOLEX INCORPORATED AND SHOULD NOT BE USED WITHOUT WRITTEN PERMISSION |                    |        |        |          |        |        |          |        |        |         |        |        |  |                 |  |       |      |                   |            |                     |            |                      |            |  |  |  |

19 | 18 | 17 | 16 | 15 | 14 | 13 | 12 | 11 | 10 | 9 | 8 | 7 | 6 | 5 | 4 | 3 | 2 | 1