



Chipsmall Limited consists of a professional team with an average of over 10 year of expertise in the distribution of electronic components. Based in Hongkong, we have already established firm and mutual-benefit business relationships with customers from,Europe,America and south Asia,supplying obsolete and hard-to-find components to meet their specific needs.

With the principle of "Quality Parts,Customers Priority,Honest Operation,and Considerate Service",our business mainly focus on the distribution of electronic components. Line cards we deal with include Microchip,ALPS,ROHM,Xilinx,Pulse,ON,Everlight and Freescale. Main products comprise IC,Modules,Potentiometer,IC Socket,Relay,Connector.Our parts cover such applications as commercial,industrial, and automotives areas.

We are looking forward to setting up business relationship with you and hope to provide you with the best service and solution. Let us make a better world for our industry!



## Contact us

Tel: +86-755-8981 8866 Fax: +86-755-8427 6832

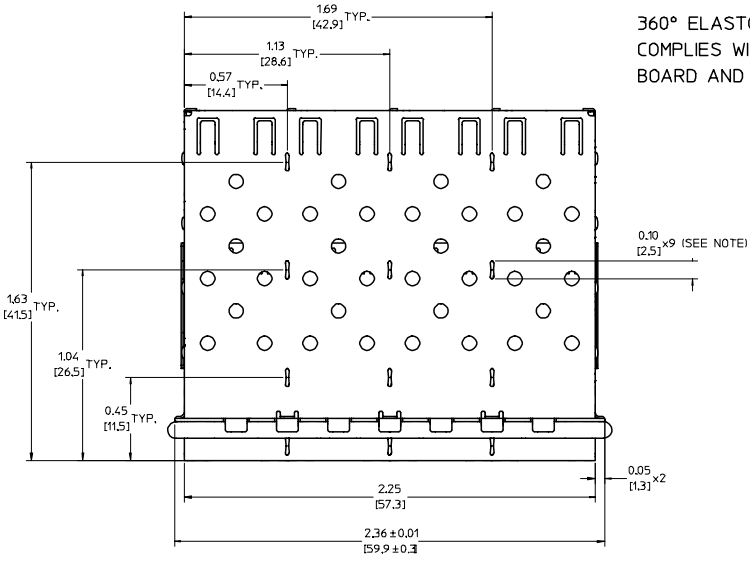
Email & Skype: info@chipsmall.com Web: www.chipsmall.com

Address: A1208, Overseas Decoration Building, #122 Zhenhua RD., Futian, Shenzhen, China



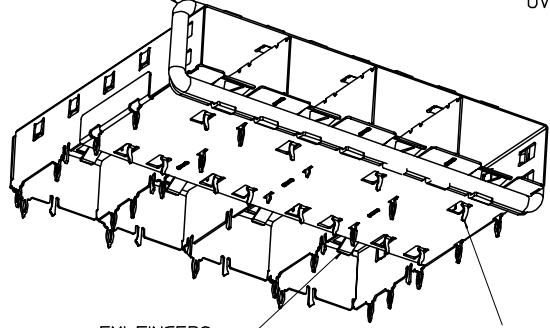
L  
K  
J  
I  
H  
G  
F  
E  
D  
C  
B  
A

L  
K  
J  
I  
H  
G  
F  
E  
D  
C  
B  
A



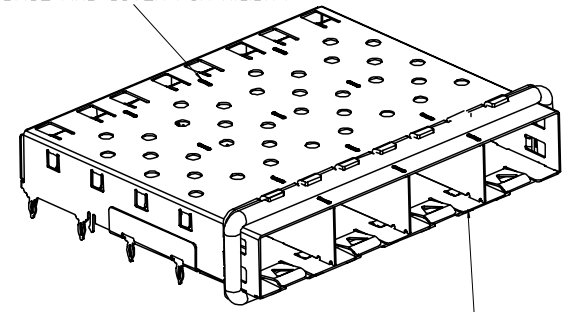
360° ELASTOMER GASKET COMPLIES WITH (SFP) MSA BOARD AND BEZEL LOCATIONS

INNER WALL TABS ARE COINED OVER BASE AND COVER FOR RIGIDITY

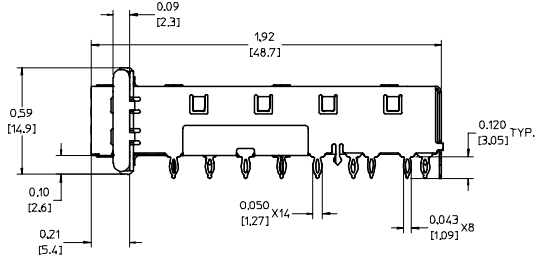
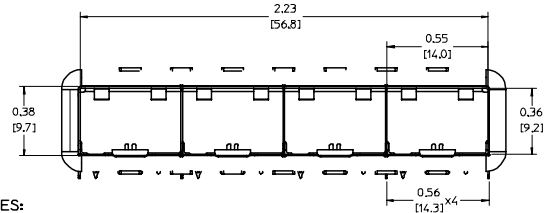


EMI FINGERS CONTACT ADAPTER

12 UNDER BELLY EMI PINS



DIMENSIONS OF EACH INNER CAGE DESIGNED TO FUNCTION WITH SMALL FORM-FACTOR PLUGGABLE (SFP) TRANSCEIVER



NOTES:

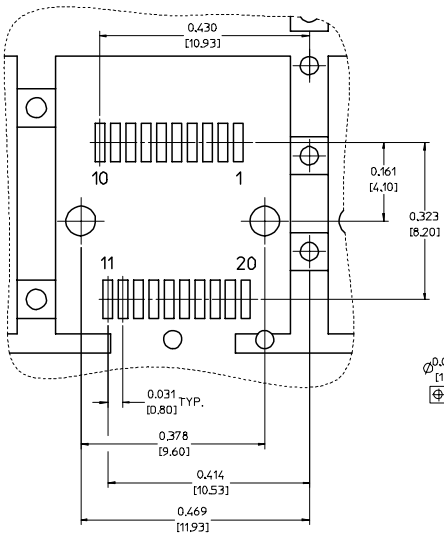
1. PRESS FIT LEGS 0.120" LONG- 0.062 [1.57] MINIMUM PCB THICKNESS. FOR SINGLE SIDED USE ONLY.
2. MATERIAL: COPPER ALLOY  
PLATING: NONE
- NOTE: A PRE-PLATED NICKEL VERSION IS AVAILABLE. REFER TO DOCUMENT SD-74728-420
3. REFERENCE DOCUMENTS:  
PRODUCT SPECIFICATION: PS-74728-000  
COSMETIC SPECIFICATIONS: WI-HP-7-2774 AND WI-HPA-7-0093  
TEST SUMMARY: TS-74728-0415
4. MATES WITH SERIES 74728. LIGHT PIPE COVER ASSEMBLY.
5. THIS PART MEETS THE RESTRICTION OF HAZARDOUS SUBSTANCES IN ELECTRICAL AND ELECTRONIC EQUIPMENT (ROHS) DIRECTIVE (2002/95/EC).

EC NO: USY2006-0225 DRW:KSIMONSO06/01/24 CHKD:BRUSSELL2006/01/24 APPR:BRUSSELL2006/01/25 B REV	QUALITY SYMBOLS	GENERAL TOLERANCES (UNLESS SPECIFIED)	SCALE 3:1	DESIGN UNITS METRIC	THIRD ANGLE PROJECTION	REVISE ON CAD ONLY
	▽ 0	4 PLACES ± --- ± --- 3 PLACES ± --- ± .005 2 PLACES ± 0.13 ± .01 1 PLACE ± 0.25 ± ---	mm INCH	DIMENSION STYLE IN/MM	TITLE 1X4 SFP CAGE ASSEMBLY, FRAME W/ TABS, W/ 0.090 OD GASKET	
	∇ 0	ANGULAR ± 1 °	DRAFT WHERE APPLICABLE MUST REMAIN WITHIN DIMENSIONS	DRAWN BY KSIMONSO DATE 2005/04/07 CHECKED BY BRUSSELL DATE 2005/04/07 APPROVED BY BRUSSELL DATE 2005/04/07	MATERIAL NO. 747280417 DOCUMENT NO. SD-74728-417	SHEET NO. 1 OF 4
				MOLEX INCORPORATED THIS DRAWING CONTAINS INFORMATION THAT IS PROPRIETARY TO MOLEX INCORPORATED AND SHOULD NOT BE USED WITHOUT WRITTEN PERMISSION		

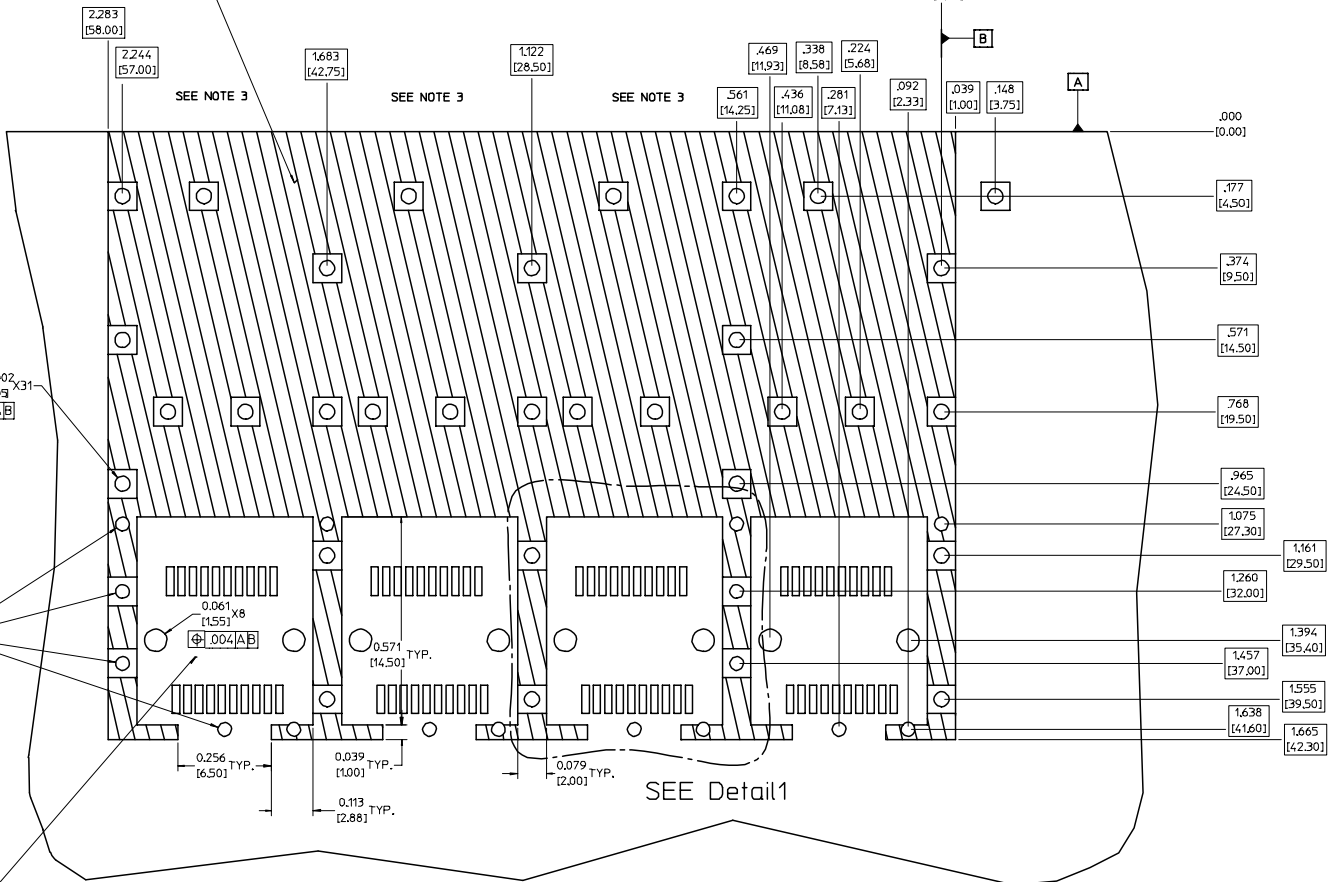
20 19 18 17 16 15 14 13 12 11 10 9 8 7 6 5 4 3 2 1

### PCB LAYOUT FOR SINGLE SIDE MOUNTING

Detail1  
SCALE 8:1



CROSS-HATCHED AREA DENOTES COMPONENT AND TRACE KEEP-OUT (EXCEPT CHASSIS GROUND)



0.037 ± 0.002 [0.95 ± 0.05]  
0.004 [A] B  
SMALLER HOLE ON THESE FOUR ROWS ONLY

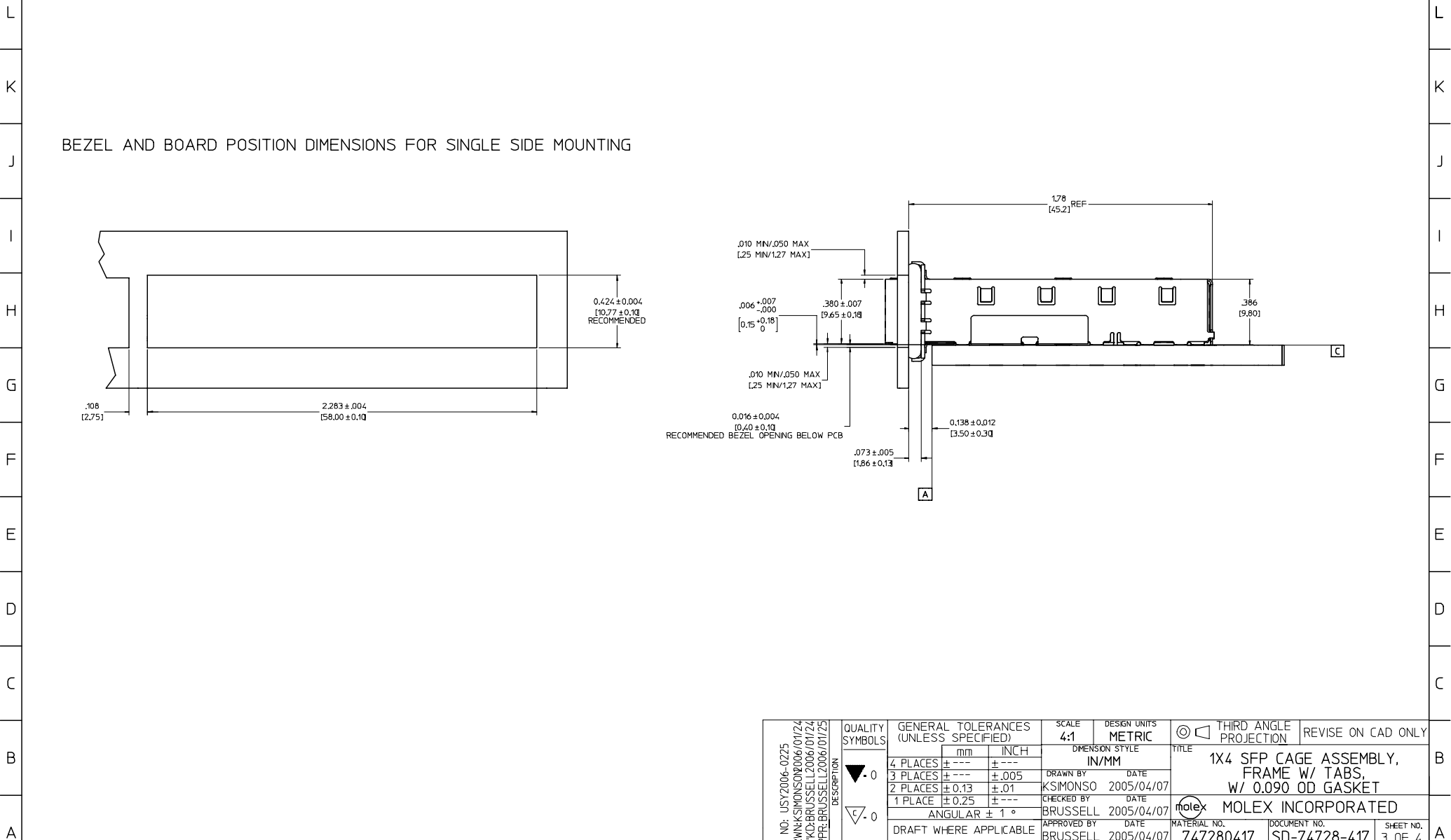
THIS AREA DENOTES COMPONENT KEEP-OUT (TRACES ALLOWED)

- NOTES:
- PADS AND VIAS GO TO CHASSIS GROUND, (34 PLACES). RECOMMENDED PADS TO BE 2mm SQUARE.
  - PLATING OPTIONAL FOR THROUGH HOLES, (12 PLACES).
  - HOLE PATTERN REPEATS FOR EACH PORT, SPACING BETWEEN PORTS IS 14.25mm.

EC NO: USY2006-0225 DRW:KSIMONSON06/01/24 CHK:D:BRUSSELL2006/01/24 APPR:BRUSSELL2006/01/25 REV DESCRIPTION	QUALITY SYMBOLS	GENERAL TOLERANCES (UNLESS SPECIFIED)	SCALE 6:1	DESIGN UNITS METRIC	THIRD ANGLE PROJECTION	REVISE ON CAD ONLY	
	▽ 0	4 PLACES ± --- ± --- 3 PLACES ± --- ± .005 2 PLACES ± 0.13 ± .01 1 PLACE ± 0.25 ± ---	mm INCH	DIMENSION STYLE IN/MM	TITLE 1X4 SFP CAGE ASSEMBLY, FRAME W/ TABS, W/ 0.090 OD GASKET		
	∇ 0	ANGULAR ± 1 °	DRAFT WHERE APPLICABLE MUST REMAIN WITHIN DIMENSIONS	DRAWN BY K SIMONSON DATE 2005/04/07 CHECKED BY BRUSSELL DATE 2005/04/07 APPROVED BY BRUSSELL DATE 2005/04/07	MATERIAL NO. 747280417	DOCUMENT NO. SD-74728-417	SHEET NO. 2 OF 4
				MOLEX INCORPORATED THIS DRAWING CONTAINS INFORMATION THAT IS PROPRIETARY TO MOLEX INCORPORATED AND SHOULD NOT BE USED WITHOUT WRITTEN PERMISSION			

19 18 17 16 15 14 13 12 11 10 9 8 7 6 5 4 3 2 1

20 | 19 | 18 | 17 | 16 | 15 | 14 | 13 | 12 | 11 | 74728 | 9 | 8 | 7 | 6 | 5 | 4 | 3 | 2 | 1



BEZEL AND BOARD POSITION DIMENSIONS FOR SINGLE SIDE MOUNTING

EC NO: USY2006-0225 DRW:KSIMONSON06/01/24 CHK:D.BRUSSELL2006/01/24 APPR:BRUSSELL2006/01/25 REV DESCRIPTION	QUALITY SYMBOLS	GENERAL TOLERANCES (UNLESS SPECIFIED)		SCALE 4:1	DESIGN UNITS METRIC	THIRD ANGLE PROJECTION	REVISE ON CAD ONLY
	▽ .0 ∇ .0	4 PLACES	mm	INCH	DIMENSION STYLE IN/MM		TITLE 1X4 SFP CAGE ASSEMBLY, FRAME W/ TABS, W/ 0.090 OD GASKET MOLEX INCORPORATED
		3 PLACES	± .005		DRAWN BY KSIMONSON	DATE 2005/04/07	
		2 PLACES	± 0.13	± .01	CHECKED BY BRUSSELL	DATE 2005/04/07	
	1 PLACE	± 0.25	± .01	APPROVED BY BRUSSELL	DATE 2005/04/07	MATERIAL NO. 747280417	DOCUMENT NO. SD-74728-417
	DRAFT WHERE APPLICABLE MUST REMAIN WITHIN DIMENSIONS		THIS DRAWING CONTAINS INFORMATION THAT IS PROPRIETARY TO MOLEX INCORPORATED AND SHOULD NOT BE USED WITHOUT WRITTEN PERMISSION		SHEET NO. 3 OF 4		

19 | 18 | 17 | 16 | 15 | 14 | 13 | 12 | 11 | 10 | 9 | 8 | 7 | 6 | 5 | 4 | 3 | 2 | 1

20 | 19 | 18 | 17 | 16 | 15 | 14 | 13 | 12 | 11 | 74728 | 9 | 8 | 7 | 6 | 5 | 4 | 3 | 2 | 1

DATE	REV	CHANGES	COMMENTS
2005/04/07	A	INITIAL RELEASE	N/A
2006/01/20	B	MODIFIED NOTES	DOCUMENT CHANGE ONLY

EC NO: USY2006-0225 DRW:KSIMONSO06/01/24 CHK:KBRUSSELL2006/01/24 APPR:BRUSSELL2006/01/25 REV B	QUALITY SYMBOLS	GENERAL TOLERANCES (UNLESS SPECIFIED)	SCALE 1:1	DESIGN UNITS METRIC	THIRD ANGLE PROJECTION	REVISE ON CAD ONLY																				
	▽ .0 ∇ .0	<table border="1"> <thead> <tr> <th></th> <th>mm</th> <th>INCH</th> </tr> </thead> <tbody> <tr> <td>4 PLACES</td> <td>± .001</td> <td>± .0005</td> </tr> <tr> <td>3 PLACES</td> <td>± .002</td> <td>± .001</td> </tr> <tr> <td>2 PLACES</td> <td>± 0.13</td> <td>± .01</td> </tr> <tr> <td>1 PLACE</td> <td>± 0.25</td> <td>± .01</td> </tr> </tbody> </table>		mm	INCH	4 PLACES	± .001	± .0005	3 PLACES	± .002	± .001	2 PLACES	± 0.13	± .01	1 PLACE	± 0.25	± .01	<table border="1"> <thead> <tr> <th colspan="2">DIMENSION STYLE</th> </tr> <tr> <th>IN/MM</th> <th>DATE</th> </tr> </thead> <tbody> <tr> <td>IN/MM</td> <td>2005/04/07</td> </tr> </tbody> </table>	DIMENSION STYLE		IN/MM	DATE	IN/MM	2005/04/07	TITLE 1X4 SFP CAGE ASSEMBLY, FRAME W/ TABS, W/ 0.090 OD GASKET	
			mm	INCH																						
	4 PLACES	± .001	± .0005																							
3 PLACES	± .002	± .001																								
2 PLACES	± 0.13	± .01																								
1 PLACE	± 0.25	± .01																								
DIMENSION STYLE																										
IN/MM	DATE																									
IN/MM	2005/04/07																									
DRAFT WHERE APPLICABLE MUST REMAIN WITHIN DIMENSIONS		ANGULAR ± 1 ° APPROVED BY DATE BRUSSELL 2005/04/07	CHECKED BY DATE BRUSSELL 2005/04/07	MATERIAL NO. 747280417	DOCUMENT NO. SD-74728-417	SHEET NO. 4 OF 4																				
THIS DRAWING CONTAINS INFORMATION THAT IS PROPRIETARY TO MOLEX INCORPORATED AND SHOULD NOT BE USED WITHOUT WRITTEN PERMISSION																										

19 | 18 | 17 | 16 | 15 | 14 | 13 | 12 | 11 | 10 | 9 | 8 | 7 | 6 | 5 | 4 | 3 | 2 | 1