



Chipsmall Limited consists of a professional team with an average of over 10 year of expertise in the distribution of electronic components. Based in Hongkong, we have already established firm and mutual-benefit business relationships with customers from,Europe,America and south Asia,supplying obsolete and hard-to-find components to meet their specific needs.

With the principle of “Quality Parts,Customers Priority,Honest Operation,and Considerate Service”,our business mainly focus on the distribution of electronic components. Line cards we deal with include Microchip,ALPS,ROHM,Xilinx,Pulse,ON,Everlight and Freescale. Main products comprise IC,Modules,Potentiometer,IC Socket,Relay,Connector.Our parts cover such applications as commercial,industrial, and automotives areas.

We are looking forward to setting up business relationship with you and hope to provide you with the best service and solution. Let us make a better world for our industry!



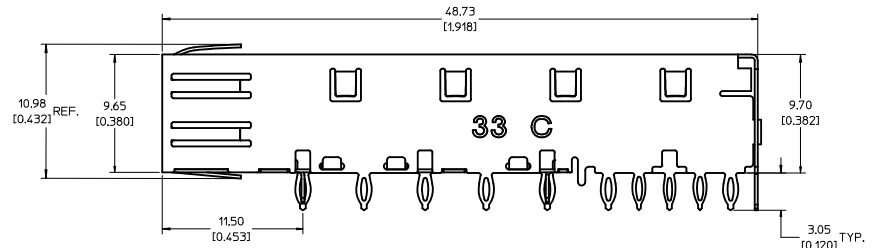
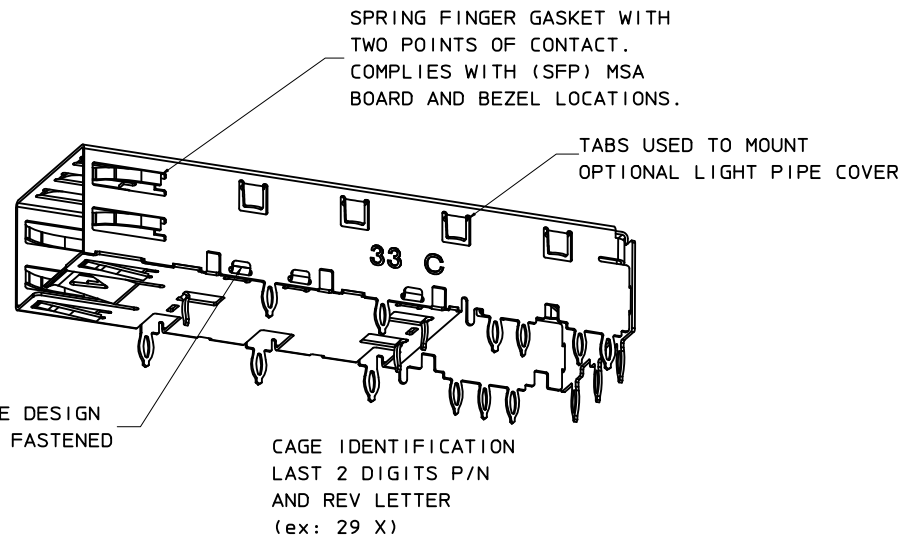
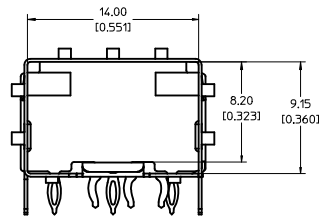
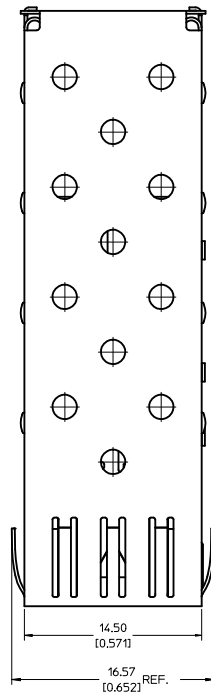
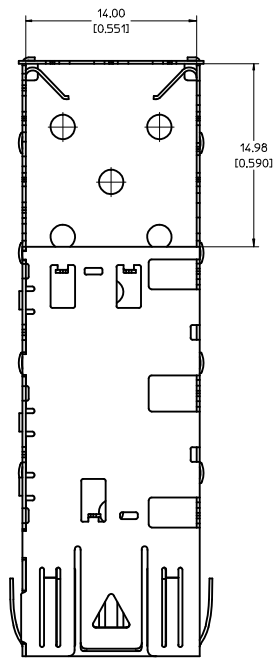
## Contact us

Tel: +86-755-8981 8866 Fax: +86-755-8427 6832

Email & Skype: info@chipsmall.com Web: www.chipsmall.com

Address: A1208, Overseas Decoration Building, #122 Zhenhua RD., Futian, Shenzhen, China





**NOTES:**

1. PRESS FIT LEGS, 0.120 INCHES LONG.  
1.57 [0.062] MINIMUM PCB THICKNESS.
2. THIS CAGE IS FOR SINGLE SIDED USE ONLY.
3. CAN BE USED WITH THE FOLLOWING LIGHT PIPE PART NUMBERS:  
747260001 - LIGHT PIPE FROM BACK TO TOP  
(REFER TO DOCUMENT SD-74726-001)  
747260002 - LIGHT PIPE FROM SIDE TO TOP  
(REFER TO DOCUMENT SD-74726-002)
4. MATERIAL: COPPER ALLOY  
PLATING: PRE-PLATED WITH NICKEL
5. THIS PART MEETS THE RESTRICTION OF HAZARDOUS SUBSTANCES IN ELECTRICAL AND ELECTRONIC EQUIPMENT (ROHS) DIRECTIVE (2002/95/EC).

<b>REV DIMS-CAGE REV</b> EC NO: USY2010-0515 DRAWN BY: CHYOKI JANOTA APPROV: K JANOTA 2010/04/27 2010/05/04	<b>QUALITY SYMBOLS</b> ▽=0 ▽=0	<b>GENERAL TOLERANCES (UNLESS SPECIFIED):</b> <table border="1"> <tr> <th></th> <th>mm</th> <th>INCH</th> </tr> <tr> <td>4 PLACES</td> <td>±0.05</td> <td>±0.002</td> </tr> <tr> <td>3 PLACES</td> <td>±0.025</td> <td>±0.001</td> </tr> <tr> <td>2 PLACES</td> <td>±0.13</td> <td>±0.01</td> </tr> <tr> <td>1 PLACE</td> <td>±0.25</td> <td>±0.01</td> </tr> </table>			mm	INCH	4 PLACES	±0.05	±0.002	3 PLACES	±0.025	±0.001	2 PLACES	±0.13	±0.01	1 PLACE	±0.25	±0.01	<b>DIMENSION STYLE</b> MM/IN	<b>SCALE</b> 5:1	<b>DESIGN UNITS</b> METRIC	THIRD ANGLE PROJECTION
			mm	INCH																		
4 PLACES	±0.05	±0.002																				
3 PLACES	±0.025	±0.001																				
2 PLACES	±0.13	±0.01																				
1 PLACE	±0.25	±0.01																				
<b>DRAFT WHERE APPLICABLE MUST REMAIN WITHIN DIMENSIONS</b>		<b>MATERIAL NO.</b> 747370033	<b>DATE</b> 2009/09/28	<b>DATE</b> 2009/09/28	<b>DATE</b> 2009/09/28	<b>DATE</b> 2009/09/28																

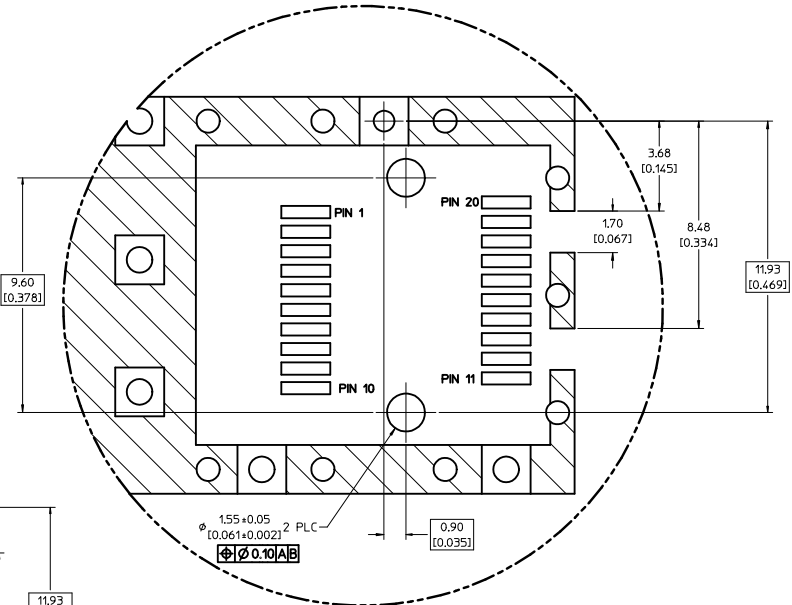
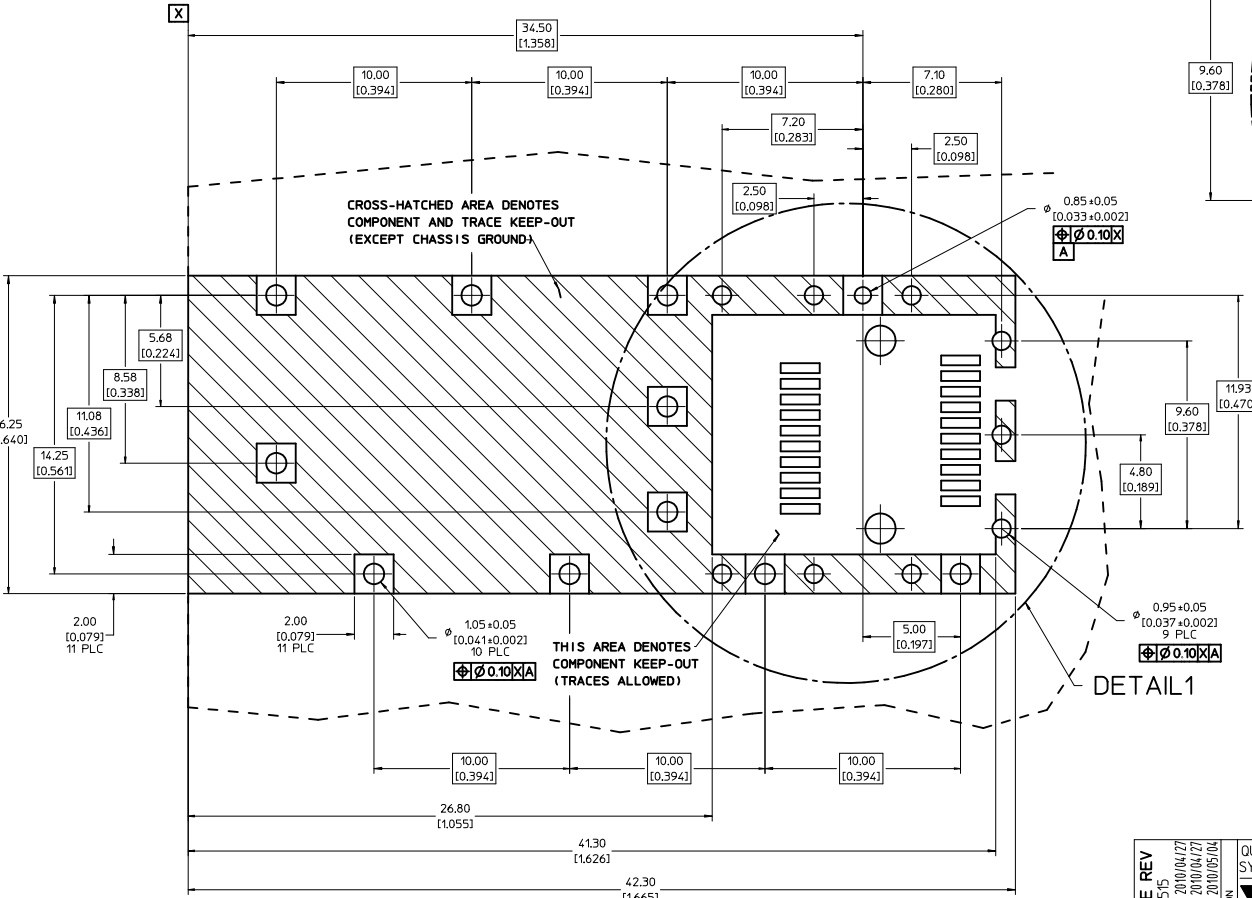
TITLE: SFP ONE PIECE CAGE PRESS-FIT (0.120 LEGS) W/ MODIFIED LATCH TANG

MOLEX INCORPORATED

DOCUMENT NO: SD-74737-0033

SHEET NO: 1 OF 3

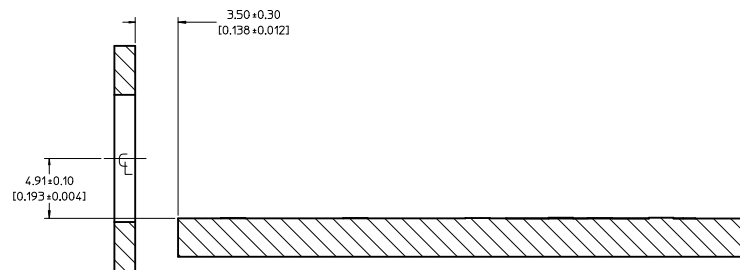
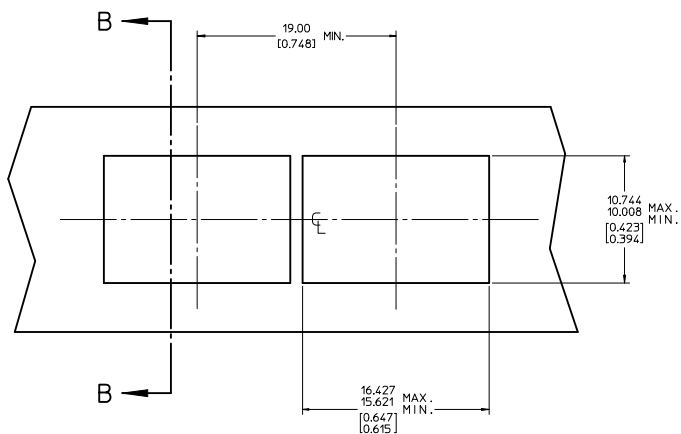
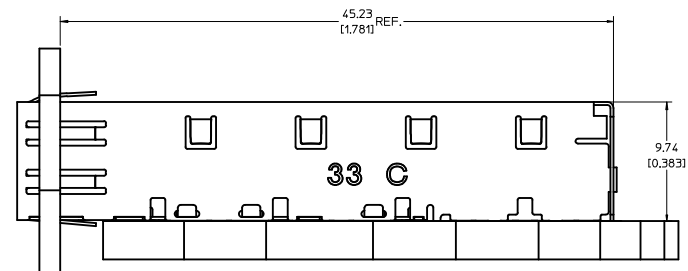
1. PADS AND VIAS ARE CHASSIS GROUND.
2. HOLE LAYOUT SHOWN IS FOR SINGLE SIDED MOUNTING ONLY.
3. CONNECTOR PAD LAYOUT PER SFP MSA, WILL ACCOMMODATE MOLEX CONNECTOR SERIES 74441 OR EQUIVALENT.



DETAIL 1  
SCALE 10:1

<b>REV DIMS-CAGE REV</b> IEC NO: USY2010-0515 DRAWN/SECRET 2010/04/27 CHKD/K.LANITA 2010/04/27 APPR/K.LANITA 2010/05/04	QUALITY SYMBOLS	GENERAL TOLERANCES (UNLESS SPECIFIED)	DIMENSION STYLE	SCALE	DESIGN UNITS	THIRD ANGLE PROJECTION
	▽=0 ▽=0	mm INCH 4 PLACES ± --- ± --- 3 PLACES ± --- ± 0.005 2 PLACES ± 0.13 ± 0.01 1 PLACE ± 0.25 ± --- ANGULAR ± 1 °	MM/IN	8:1	METRIC	DRAWN BY DATE JRESENDE 2009/09/28 CHECKED BY DATE JRESENDE 2009/09/28 APPROVED BY DATE JRESENDE 2009/09/28
	DRAFT WHERE APPLICABLE MUST REMAIN WITHIN DIMENSIONS	MATERIAL NO.	DOCUMENT NO.	TITLE SFP ONE PIECE CAGE PRESS-FIT (0.120 LEGS) W/ MODIFIED LATCH TANG MOLEX INCORPORATED		
	SIZE D	747370033	SD-74737-0033	SHEET NO. 2 OF 3		

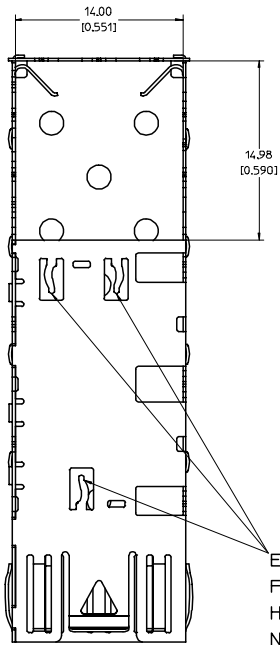
20 19 18 17 16 15 14 13 12 11 10 9 8 7 6 5 4 3 2 1



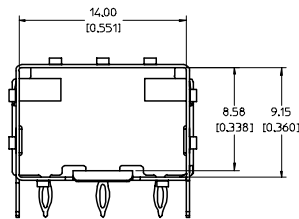
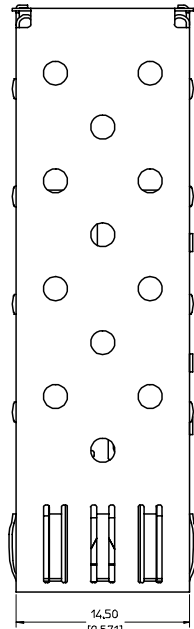
SECTION B-B

<b>REV DIMS-CAGE REV</b> IEC NO: USY2010-0515 DRAWN/SECRET 2010/04/27 CHK/DK/LANITA 2010/04/27 APPR/K/LANITA 2010/05/04	QUALITY SYMBOLS	GENERAL TOLERANCES (UNLESS SPECIFIED)		DIMENSION STYLE	SCALE	DESIGN UNITS	THIRD ANGLE PROJECTION	
	▽=0 ▽=0	mm	INCH	MM/IN	5:1	METRIC		
		4 PLACES ± --- ± ---	3 PLACES ± --- ± 0.005	2 PLACES ± 0.13 ± 0.01	1 PLACE ± 0.25 ± ---	DRAWN BY: JRESENDE DATE: 2009/09/28		TITLE: SFP ONE PIECE CAGE PRESS-FIT (0.120 LEGS) W/ MODIFIED LATCH TANG
		ANGULAR ± 1 °		DRAFT WHERE APPLICABLE MUST REMAIN WITHIN DIMENSIONS		CHECKED BY: JRESENDE DATE: 2009/09/28	APPROVED BY: JRESENDE DATE: 2009/09/28	MOLEX INCORPORATED
				MATERIAL NO. 747370033	DOCUMENT NO. SD-74737-0033	SHEET NO. 3 OF 3		
THIS DRAWING CONTAINS INFORMATION THAT IS PROPRIETARY TO MOLEX INCORPORATED AND SHOULD NOT BE USED WITHOUT WRITTEN PERMISSION								

19 18 17 16 15 14 13 12 11 10 9 8 7 6 5 4 3 2 1



EMI PINS REMAIN FLAT. NO THROUGH HOLES IN PCB NECESSARY.

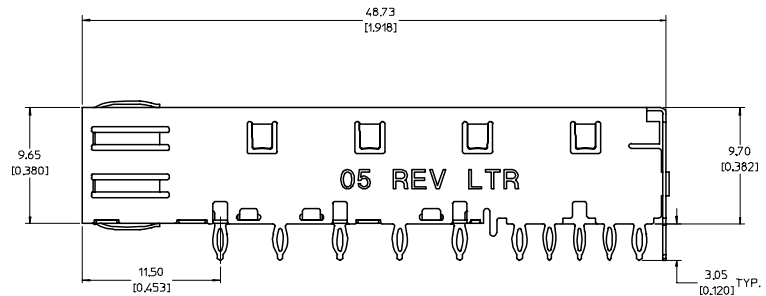
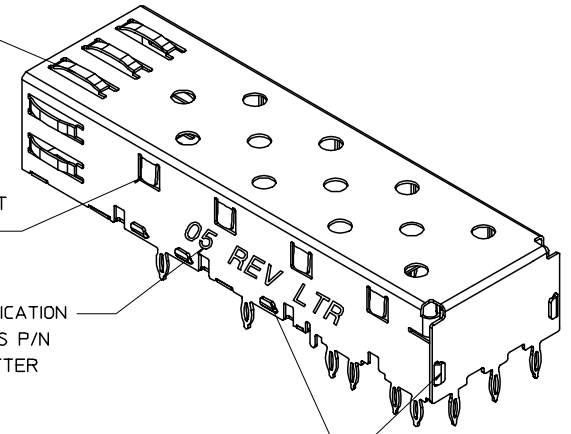


SPRING FINGER GASKET WITH TWO POINTS OF CONTACT. COMPLIES WITH (SFP) MSA BOARD AND BEZEL LOCATIONS.

TABS USED TO MOUNT LIGHT PIPE COVER

CAGE IDENTIFICATION LAST 2 DIGITS P/N AND REV LETTER (ex: 05 X)

ONE PIECE DESIGN SECURELY FASTENED



NOTES:

- PRESS FIT LEGS, 0.120 INCHES LONG. 157 (0.062) MINIMUM PCB THICKNESS.
- THIS CAGE IS FOR SINGLE SIDED USE ONLY.
- CAN BE USED WITH THE FOLLOWING LIGHT PIPE PART NUMBERS:

747260001 - LIGHT PIPE FROM BACK TO TOP  
(REFER TO DOCUMENT SD-74726-001)

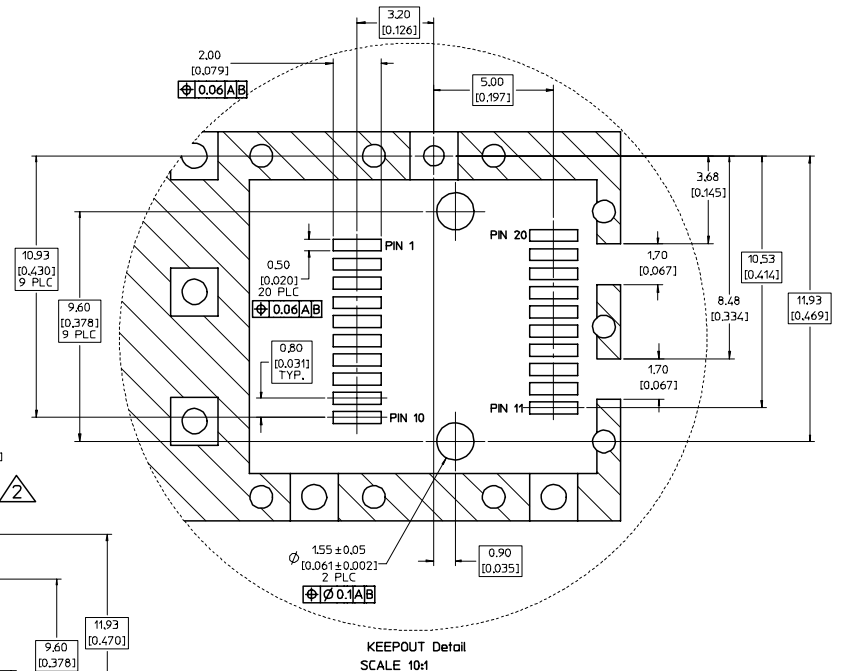
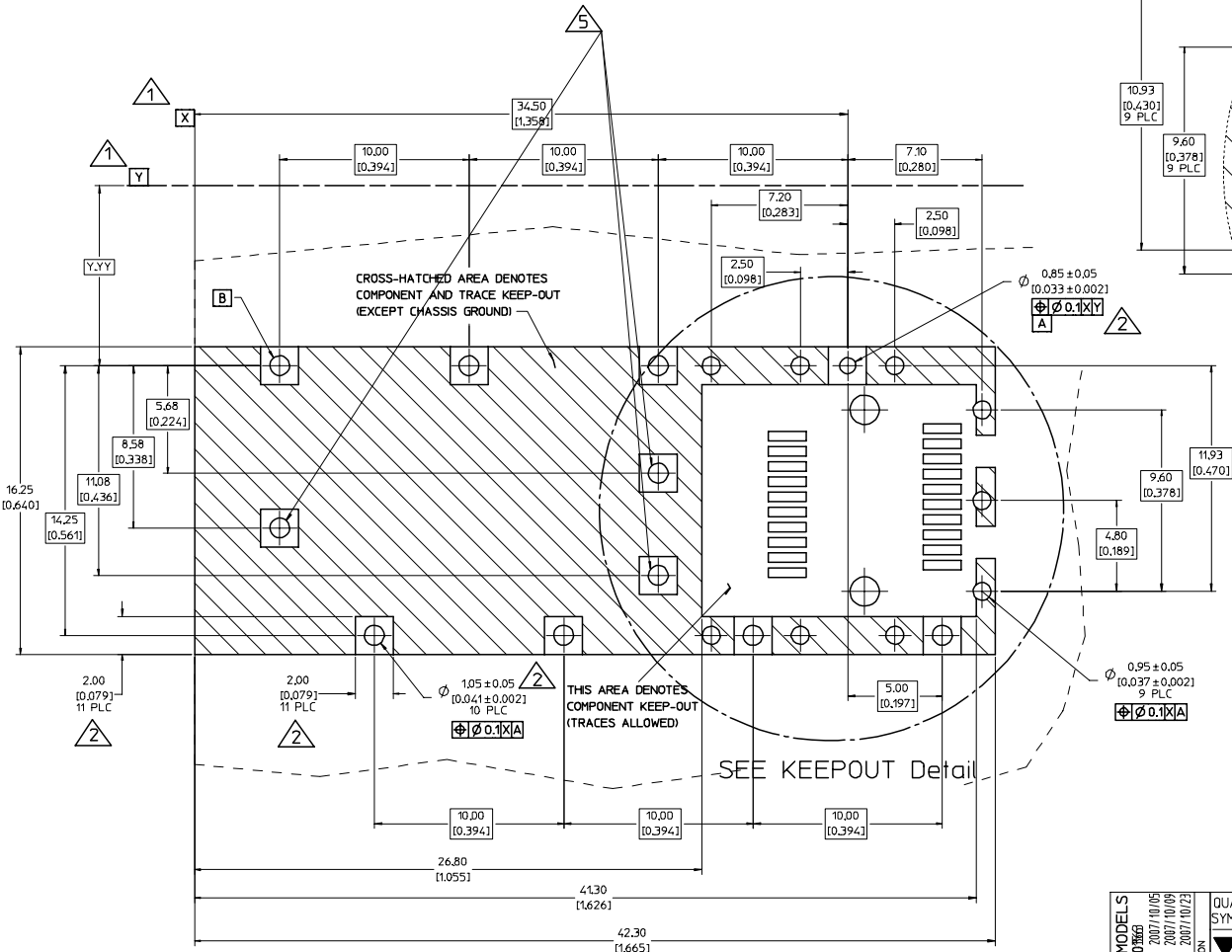
747260002 - LIGHT PIPE FROM SIDE TO TOP  
(REFER TO DOCUMENT SD-74726-002)

4. MATERIAL: COPPER ALLOY  
PLATING: PRE-PLATED WITH NICKEL

5. THIS PART MEETS THE RESTRICTION OF HAZARDOUS SUBSTANCES IN ELECTRICAL AND ELECTRONIC EQUIPMENT (ROHS) DIRECTIVE (2002/95/EC).

UPDATED 3D MODELS EC NO: USY2008-0860 DRAWN BY: 2007/10/05 CHECKED: 2007/10/09 APPROVED: 2007/10/23 DESCRIPTION:	QUALITY SYMBOLS	GENERAL TOLERANCES (UNLESS SPECIFIED)	DIMENSION STYLE	SCALE	DESIGN UNITS	THIRD ANGLE PROJECTION
	$\nabla=0$ $\nabla=0$	mm INCH 4 PLACES ± --- ± --- 3 PLACES ± --- ± .005 2 PLACES ± 0.13 ± .01 1 PLACE ± 0.25 ± --- ANGULAR ± 1 °	MM/IN	5:1	METRIC	
	DRAWN BY: KS IMONSO CHECKED BY: RMAHMOOD APPROVED BY: RMAHMOOD	DATE: 2005/09/12 DATE: 2006/12/20 DATE: 2006/12/20	MATERIAL NO.: 747370005 SIZE: D	TITLE: SFP ONE PIECE CAGE PRESS-FIT (0.120 LEGS) NO EMI PINS MOLEX INCORPORATED	DOCUMENT NO.: SD-74737-005	SHEET NO.: 1 OF 4
	DRAFT WHERE APPLICABLE MUST REMAIN WITHIN DIMENSIONS THIS DRAWING CONTAINS INFORMATION THAT IS PROPRIETARY TO MOLEX INCORPORATED AND SHOULD NOT BE USED WITHOUT WRITTEN PERMISSION					

- 1 DATUM AND BASIC DIMENSIONS ESTABLISHED BY CUSTOMER.
- 2 PADS AND VIAS ARE CHASSIS GROUND.
- 3 HOLE LAYOUT SHOWN IS FOR SINGLE SIDED MOUNTING ONLY.
- 4 CONNECTOR PAD LAYOUT PER SFP MSA, WILL ACCOMMODATE MOLEX CONNECTOR SERIES 74441 OR EQUIVALENT.
- 5 THESE HOLES OPTIONAL.



UPDATED 3D MODELS EC NO: USY2008-0866 DRAWN BY: JORWANKOJ CHECKED: JORWANKOJ APPROVED: JORWANKOJ DATE: 2007/10/09 DATE: 2007/10/09 DATE: 2007/10/23	QUALITY SYMBOLS	GENERAL TOLERANCES (UNLESS SPECIFIED)	DIMENSION STYLE	SCALE	DESIGN UNITS	THIRD ANGLE PROJECTION
	$\nabla=0$ $\nabla=0$	mm INCH 4 PLACES ± --- ± --- 3 PLACES ± --- ± .005 2 PLACES ± 0.13 ± .01 1 PLACE ± 0.25 ± --- ANGULAR ± 1 °	MM/IN	8:1	METRIC	<input checked="" type="checkbox"/> THIRD ANGLE <input type="checkbox"/> FIRST ANGLE
	DRAFT WHERE APPLICABLE MUST REMAIN WITHIN DIMENSIONS	DRAWN BY: KS IMONSO CHECKED BY: RMAHMOOD APPROVED BY: RMAHMOOD DATE: 2005/09/12 DATE: 2006/12/20 DATE: 2006/12/20	TITLE			SFP ONE PIECE CAGE PRESS-FIT (0.120 LEGS) NO EMI PINS
		MATERIAL NO: 747370005 DOCUMENT NO: SD-74737-005	MOLEX MOLEX INCORPORATED			SHEET NO: 2 OF 4

20 19 18 17 16 15 14 13 12 11 10 9 8 7 6 5 4 3 2 1

M

L

K

J

I

H

G

F

E

D

C

B

A

M

L

K

J

I

H

G

F

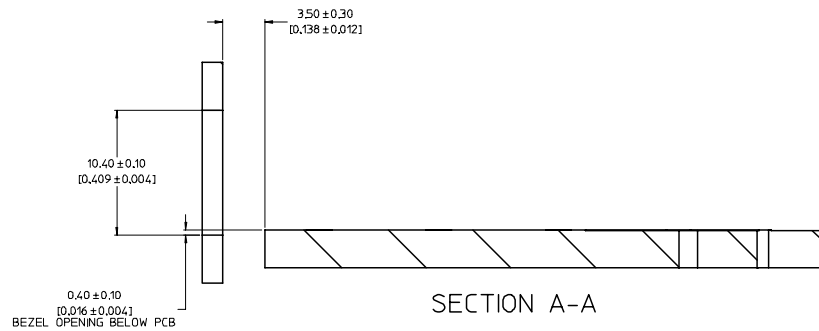
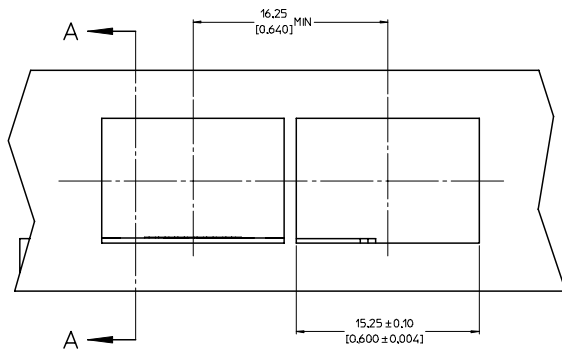
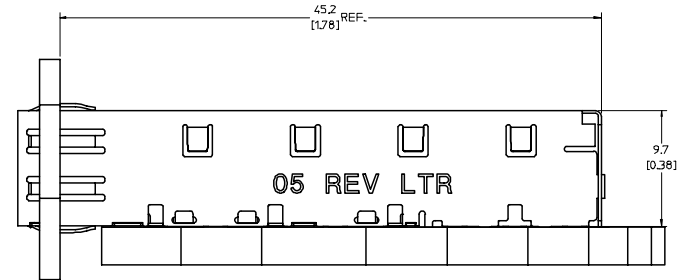
E

D

C

B

A



UPDATED 3D MODELS EC NO: USY2008-0860 DRAWN BY: TORWANKOJ CHECKED: TORWANKOJ APPROVED: TORWANKOJ DATE: 2007/10/09 DATE: 2007/10/09 DATE: 2007/10/23	QUALITY SYMBOLS	GENERAL TOLERANCES (UNLESS SPECIFIED)	DIMENSION STYLE	SCALE	DESIGN UNITS	THIRD ANGLE PROJECTION
	▽=0 ▽=0	mm INCH 4 PLACES ± --- ± --- 3 PLACES ± --- ± .005 2 PLACES ± 0.13 ± .01 1 PLACE ± 0.25 ± --- ANGULAR ± 1 °	MM/IN	5:1	METRIC	TITLE: SFP ONE PIECE CAGE PRESS-FIT (0.120 LEGS) NO EMI PINS MOLEX INCORPORATED
	DRAFT WHERE APPLICABLE MUST REMAIN WITHIN DIMENSIONS	APPROVED BY: RMAHMOOD DATE: 2006/12/20	MATERIAL NO: 747370005	DOCUMENT NO: SD-74737-005	SHEET NO: 3 OF 4	
			THIS DRAWING CONTAINS INFORMATION THAT IS PROPRIETARY TO MOLEX INCORPORATED AND SHOULD NOT BE USED WITHOUT WRITTEN PERMISSION			

19 18 17 16 15 14 13 12 11 10 9 8 7 6 5 4 3 2 1

