



Chipsmall Limited consists of a professional team with an average of over 10 year of expertise in the distribution of electronic components. Based in Hongkong, we have already established firm and mutual-benefit business relationships with customers from,Europe,America and south Asia,supplying obsolete and hard-to-find components to meet their specific needs.

With the principle of “Quality Parts,Customers Priority,Honest Operation,and Considerate Service”,our business mainly focus on the distribution of electronic components. Line cards we deal with include Microchip,ALPS,ROHM,Xilinx,Pulse,ON,Everlight and Freescale. Main products comprise IC,Modules,Potentiometer,IC Socket,Relay,Connector.Our parts cover such applications as commercial,industrial, and automotives areas.

We are looking forward to setting up business relationship with you and hope to provide you with the best service and solution. Let us make a better world for our industry!



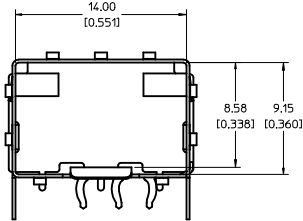
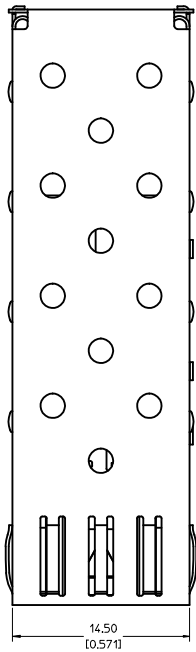
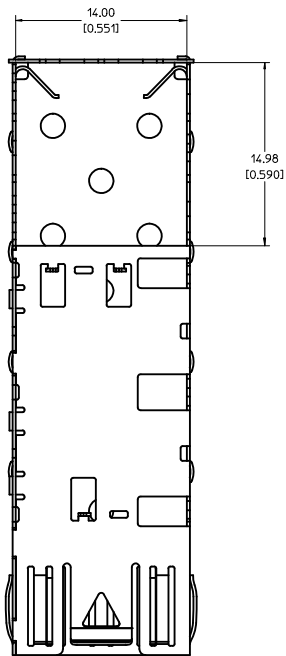
Contact us

Tel: +86-755-8981 8866 Fax: +86-755-8427 6832

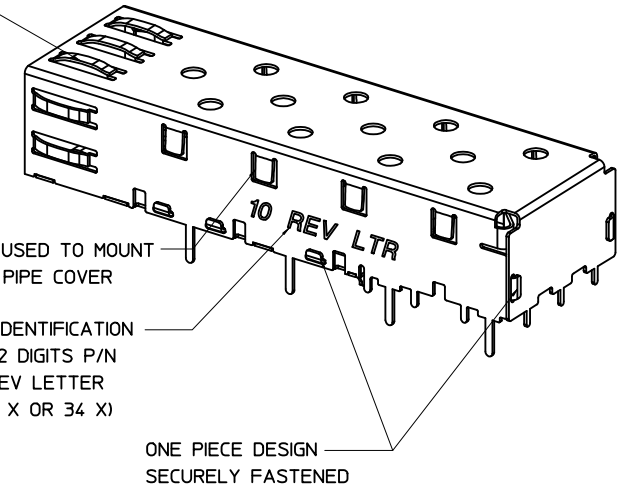
Email & Skype: info@chipsmall.com Web: www.chipsmall.com

Address: A1208, Overseas Decoration Building, #122 Zhenhua RD., Futian, Shenzhen, China





SPRING FINGER GASKET WITH TWO POINTS OF CONTACT. COMPLIES WITH (SFP) MSA BOARD AND BEZEL LOCATIONS.



MOLEX PN	PLATING
747370010	PRE-PLATED WITH NICKEL
747370034	POST PLATED WITH MATTE TIN

NOTES:

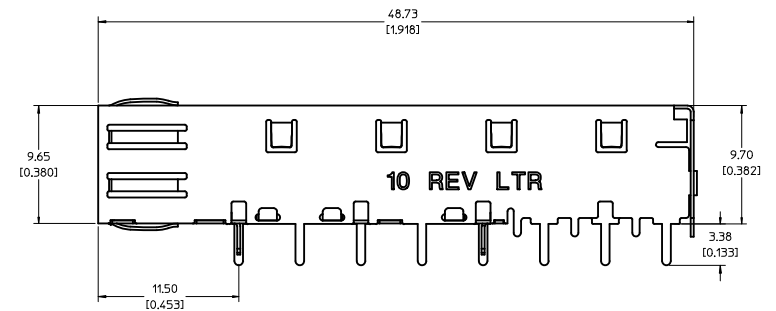
- THIS CAGE IS FOR SINGLE SIDED USE ONLY.
- CAN BE USED WITH THE FOLLOWING LIGHT PIPE PART NUMBERS:

747260001 - LIGHT PIPE FROM BACK TO TOP
(REFER TO DOCUMENT SD-74726-001)

747260002 - LIGHT PIPE FROM SIDE TO TOP
(REFER TO DOCUMENT SD-74726-002)

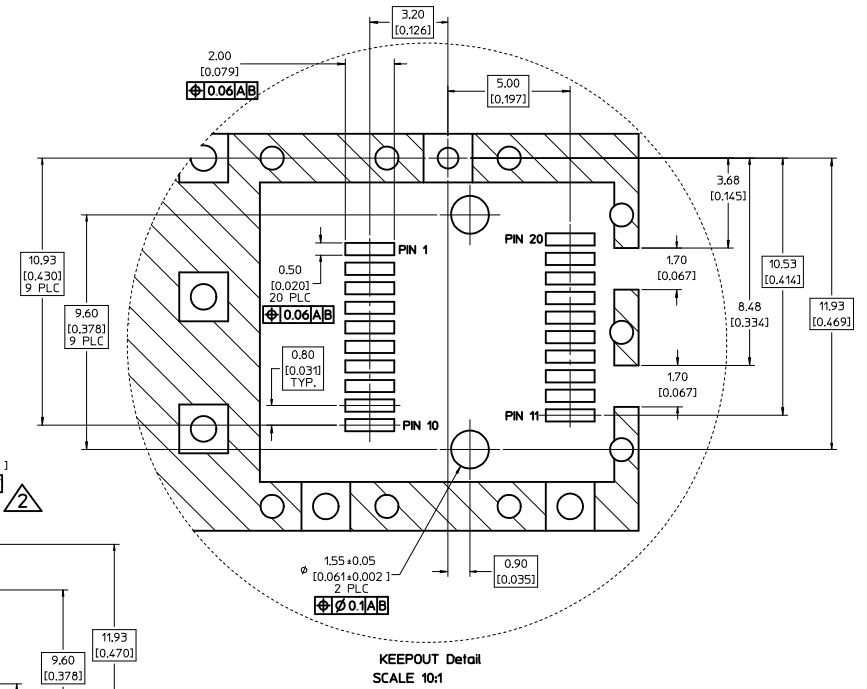
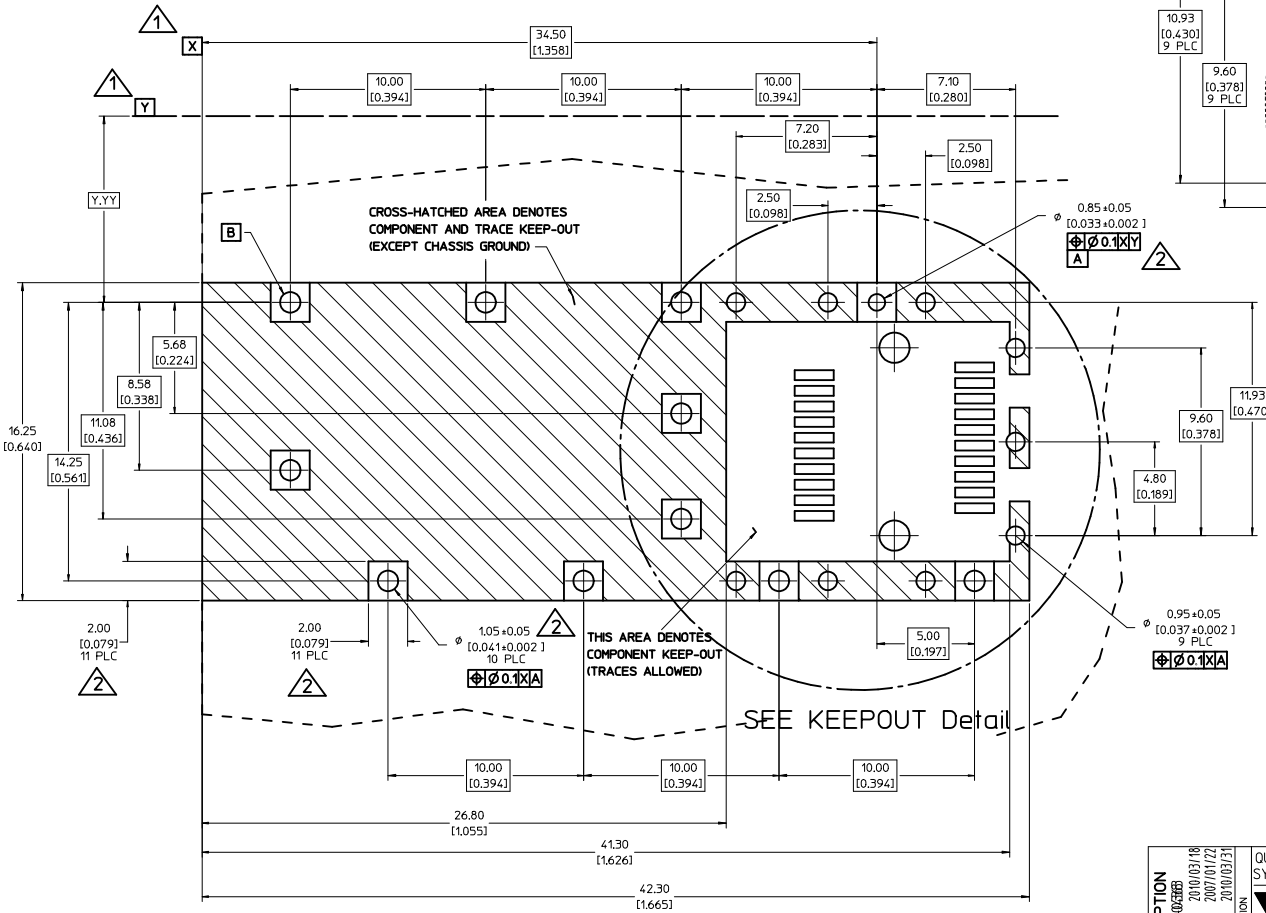
3. MATERIAL: COPPER ALLOY

4. THIS PART MEETS THE RESTRICTION OF HAZARDOUS SUBSTANCES IN ELECTRICAL AND ELECTRONIC EQUIPMENT (ROHS) DIRECTIVE (2002/95/EC).



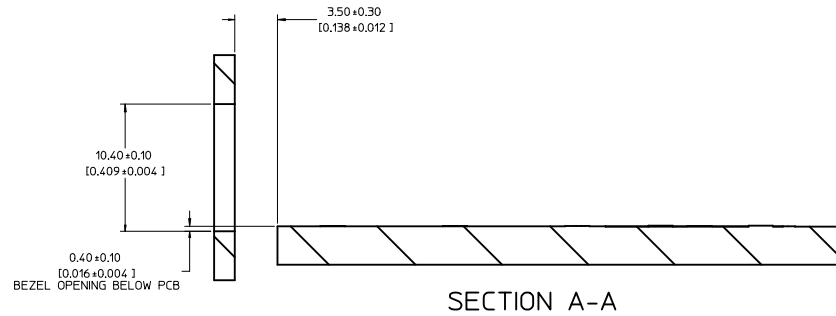
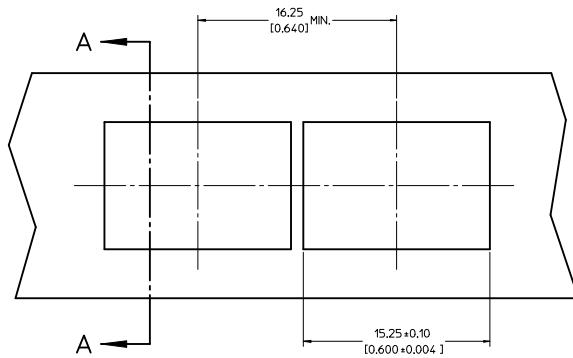
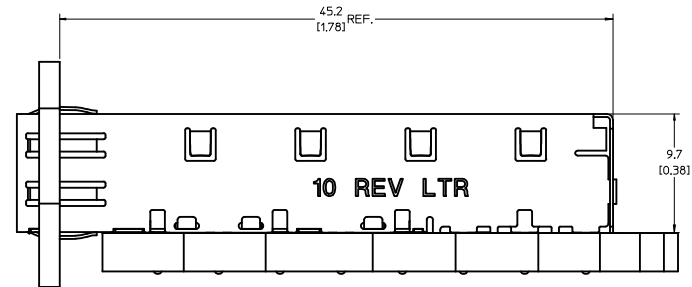
ADDED TIN OPTION EC NO: USY2007-03885 DRAWN: MCKERVEY 2010/03/18 CHECKED: RMAHMOOD 2007/01/22 APPROVED: KJANOTA 2010/03/31	QUALITY SYMBOLS ▽=0 ▽=0	GENERAL TOLERANCES (UNLESS SPECIFIED): <table border="1"> <thead> <tr> <th></th> <th>mm</th> <th>INCH</th> </tr> </thead> <tbody> <tr> <td>4 PLACES</td> <td>±.005</td> <td>±.0005</td> </tr> <tr> <td>3 PLACES</td> <td>±.010</td> <td>±.0010</td> </tr> <tr> <td>2 PLACES</td> <td>±.015</td> <td>±.0015</td> </tr> <tr> <td>1 PLACE</td> <td>±.025</td> <td>±.0025</td> </tr> </tbody> </table>		mm	INCH	4 PLACES	±.005	±.0005	3 PLACES	±.010	±.0010	2 PLACES	±.015	±.0015	1 PLACE	±.025	±.0025	DIMENSION STYLE MM/IN	SCALE 5:1	DESIGN UNITS METRIC	THIRD ANGLE PROJECTION
		mm	INCH																		
	4 PLACES	±.005	±.0005																		
	3 PLACES	±.010	±.0010																		
2 PLACES	±.015	±.0015																			
1 PLACE	±.025	±.0025																			
DESCRIPTION SFP ONE PIECE CAGE W/SPRING FINGERS SOLDER POSTS	DRAWN BY CCOX	DATE 2007/01/22	TITLE SFP ONE PIECE CAGE W/SPRING FINGERS SOLDER POSTS	DRAWN BY RMAHMOOD	DATE 2007/01/22	APPROVED BY KJANOTA	DATE 2010/03/31														
MATERIAL NO. SEE CHART	DOCUMENT NO. SD-74737-010	MOLEX INCORPORATED	MOLEX INCORPORATED	SHEET NO. 1 OF 4	THIS DRAWING CONTAINS INFORMATION THAT IS PROPRIETARY TO MOLEX INCORPORATED AND SHOULD NOT BE USED WITHOUT WRITTEN PERMISSION	DRAFT WHERE APPLICABLE MUST REMAIN WITHIN DIMENSIONS															

- DATUM AND BASIC DIMENSIONS ESTABLISHED BY CUSTOMER.
- PADS AND VIAS ARE CHASSIS GROUND.
- HOLE LAYOUT SHOWN IS FOR SINGLE SIDED MOUNTING ONLY.
- CONNECTOR PAD LAYOUT PER SFP MSA, WILL ACCOMMODATE MOLEX CONNECTOR SERIES 74441 OR EQUIVALENT.



ADDED TIN OPTION EC NO: US2007-00368 DRAWN BY: WMC/KEYVEY 2010/03/18 CHECKED BY: CHYK/RAHMOOD 2007/01/22 APPR: K JANOTA 2010/03/31	QUALITY SYMBOLS	GENERAL TOLERANCES (UNLESS SPECIFIED)	DIMENSION STYLE	SCALE	DESIGN UNITS	THIRD ANGLE PROJECTION
	$\nabla=0$ $\nabla=0$	mm INCH 4 PLACES ± --- ± --- 3 PLACES ± --- ± .005 2 PLACES ± 0.13 ± .01 1 PLACE ± 0.25 ± --- ANGULAR ± 1 °	MM/IN	8:1	METRIC	
	DRAWN BY: WMC/KEYVEY 2010/03/18 CHECKED BY: CHYK/RAHMOOD 2007/01/22 APPR: K JANOTA 2010/03/31	DRAWN BY: CCOX DATE: 2007/01/22 CHECKED BY: RAHMOOD DATE: 2007/01/22 APPROVED BY: K JANOTA DATE: 2010/03/31	MATERIAL NO: SEE CHART DOCUMENT NO: SD-74737-010	TITLE: SFP ONE PIECE CAGE W/SPRING FINGERS SOLDER POSTS	MOLEX INCORPORATED	SHEET NO: 2 OF 4
	DRAFT WHERE APPLICABLE MUST REMAIN WITHIN DIMENSIONS	SIZE: D THIS DRAWING CONTAINS INFORMATION THAT IS PROPRIETARY TO MOLEX INCORPORATED AND SHOULD NOT BE USED WITHOUT WRITTEN PERMISSION				

20 19 18 17 16 15 14 13 12 11 10 9 8 7 6 5 4 3 2 1



ADDED TIN OPTION EC NO: USY2007-00688B DRAWN: MCKERVEY 2010/03/18 CHECKED: RMAHMOOD 2007/01/22 APPR: K.JANOTA 2010/03/31	QUALITY SYMBOLS ▽=0 ▽=0	GENERAL TOLERANCES (UNLESS SPECIFIED)		DIMENSION STYLE MM/IN	SCALE 5:1	DESIGN UNITS METRIC	THIRD ANGLE PROJECTION
		4 PLACES ± --- ± --- 3 PLACES ± --- ± .005 2 PLACES ± 0.13 ± .01 1 PLACE ± 0.25 ± --- ANGULAR ± 1 °	DRAWN BY CCOX DATE 2007/01/22 CHECKED BY RMAHMOOD DATE 2007/01/22 APPROVED BY K.JANOTA DATE 2010/03/31	TITLE SFP ONE PIECE CAGE W/SPRING FINGERS SOLDER POSTS		MOLEX INCORPORATED	
		DRAFT WHERE APPLICABLE MUST REMAIN WITHIN DIMENSIONS	MATERIAL NO. SEE CHART	DOCUMENT NO. SD-74737-010	SHEET NO. 3 OF 4		
		THIS DRAWING CONTAINS INFORMATION THAT IS PROPRIETARY TO MOLEX INCORPORATED AND SHOULD NOT BE USED WITHOUT WRITTEN PERMISSION					

19 18 17 16 15 14 13 12 11 10 9 8 7 6 5 4 3 2 1

DATE	REV	CHANGES
2007/01/17	A	INITIAL RELEASE
2007/01/24	B	[1] ON SHT1 ADDED TEXT TO ISO VIEW & SIDE VIEW, [2] ON SHT3 DELETED BEZ FRONT VIEW
2007/04/25	C	[1] ADDED REV SHEET, [2] UPDATED REV SHEET NOTES A-B, [3] UPDATED DRAWING TO REFLECT CHG'S MADE TO EM-74737-010-ASSY REV C, [4] ON SHT1 ROTATED BTM VIEW 180 DEGREES.
2010/03/18	D	[1] ADDED PLATING CHART ON SHT1 WITH TIN AND NICKEL OPTION, [2] REMOVED PLATING CALLOUT FROM NOTE 3, [3] CHANGED MATERIAL NO. TO 'SEE CHART'

ADDED TIN OPTION EC NO: USY2007-0038B DRAWN: MCKERVEY 2010/03/18 CHECKED: RMAHMOOD 2007/01/22 APPR: K JANOTA 2010/03/31	QUALITY SYMBOLS ▽=0 ▽=0	GENERAL TOLERANCES (UNLESS SPECIFIED) <table border="1"> <thead> <tr> <th></th> <th>mm</th> <th>INCH</th> </tr> </thead> <tbody> <tr> <td>4 PLACES</td> <td>±.005</td> <td>±.0005</td> </tr> <tr> <td>3 PLACES</td> <td>±.01</td> <td>±.001</td> </tr> <tr> <td>2 PLACES</td> <td>±0.13</td> <td>±.01</td> </tr> <tr> <td>1 PLACE</td> <td>±0.25</td> <td>±.01</td> </tr> </tbody> </table> ANGULAR ± 1°		mm	INCH	4 PLACES	±.005	±.0005	3 PLACES	±.01	±.001	2 PLACES	±0.13	±.01	1 PLACE	±0.25	±.01	DIMENSION STYLE MM/IN DRAWN BY: CCOX DATE: 2007/01/22 CHECKED BY: RMAHMOOD DATE: 2007/01/22 APPROVED BY: K JANOTA DATE: 2010/03/31	SCALE: 1:1 DESIGN UNITS: METRIC THIRD ANGLE PROJECTION	TITLE: SFP ONE PIECE CAGE W/SPRING FINGERS SOLDER POSTS MOLEX INCORPORATED MATERIAL NO. SD-74737-010 DOCUMENT NO. SD-74737-010	SHEET NO. 4 OF 4
		mm	INCH																		
	4 PLACES	±.005	±.0005																		
	3 PLACES	±.01	±.001																		
2 PLACES	±0.13	±.01																			
1 PLACE	±0.25	±.01																			
DRAFT WHERE APPLICABLE MUST REMAIN WITHIN DIMENSIONS	SEE CHART	THIS DRAWING CONTAINS INFORMATION THAT IS PROPRIETARY TO MOLEX INCORPORATED AND SHOULD NOT BE USED WITHOUT WRITTEN PERMISSION																			
SIZE: D																					
REV:																					