



Chipsmall Limited consists of a professional team with an average of over 10 year of expertise in the distribution of electronic components. Based in Hongkong, we have already established firm and mutual-benefit business relationships with customers from,Europe,America and south Asia,supplying obsolete and hard-to-find components to meet their specific needs.

With the principle of “Quality Parts,Customers Priority,Honest Operation,and Considerate Service”,our business mainly focus on the distribution of electronic components. Line cards we deal with include Microchip,ALPS,ROHM,Xilinx,Pulse,ON,Everlight and Freescale. Main products comprise IC,Modules,Potentiometer,IC Socket,Relay,Connector.Our parts cover such applications as commercial,industrial, and automotives areas.

We are looking forward to setting up business relationship with you and hope to provide you with the best service and solution. Let us make a better world for our industry!



Contact us

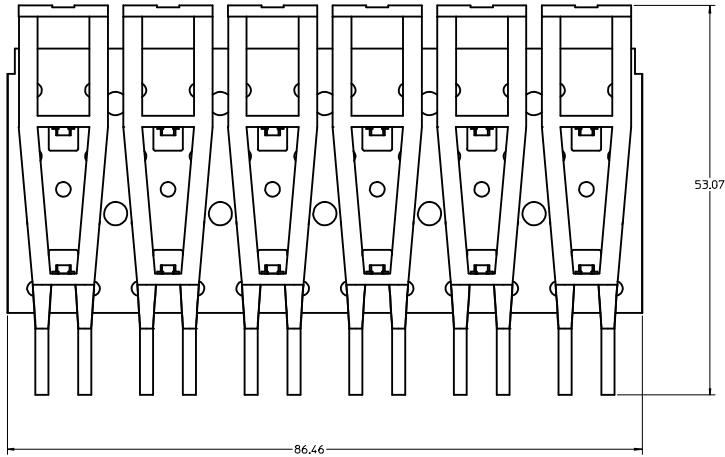
Tel: +86-755-8981 8866 Fax: +86-755-8427 6832

Email & Skype: info@chipsmall.com Web: www.chipsmall.com

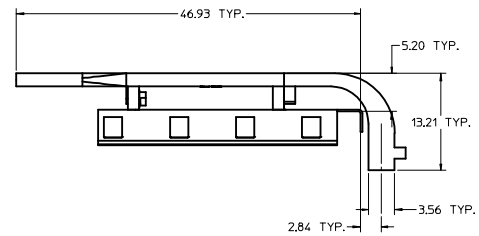
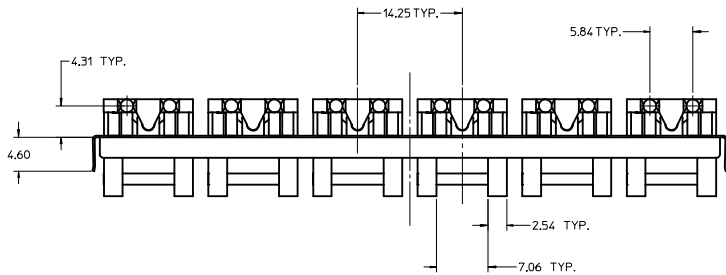
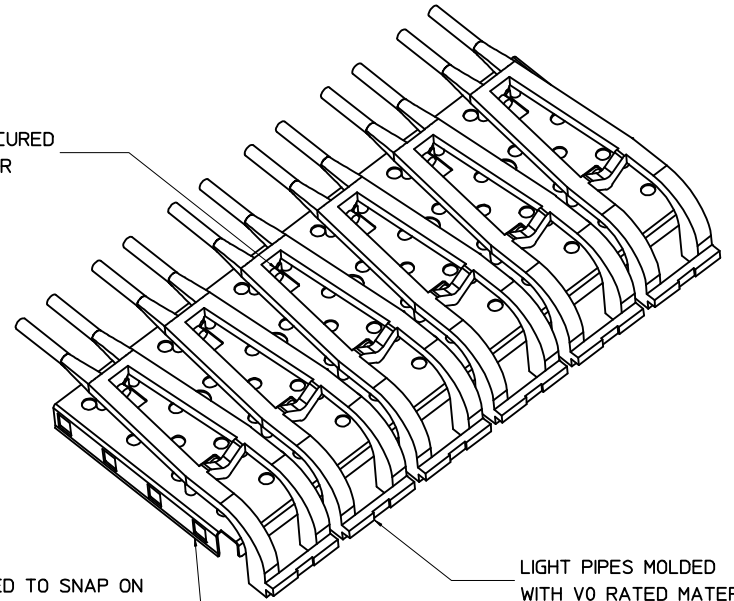
Address: A1208, Overseas Decoration Building, #122 Zhenhua RD., Futian, Shenzhen, China



3D MODEL: EM-74748-001-ASSY



LIGHT PIPES SECURED TO METAL COVER



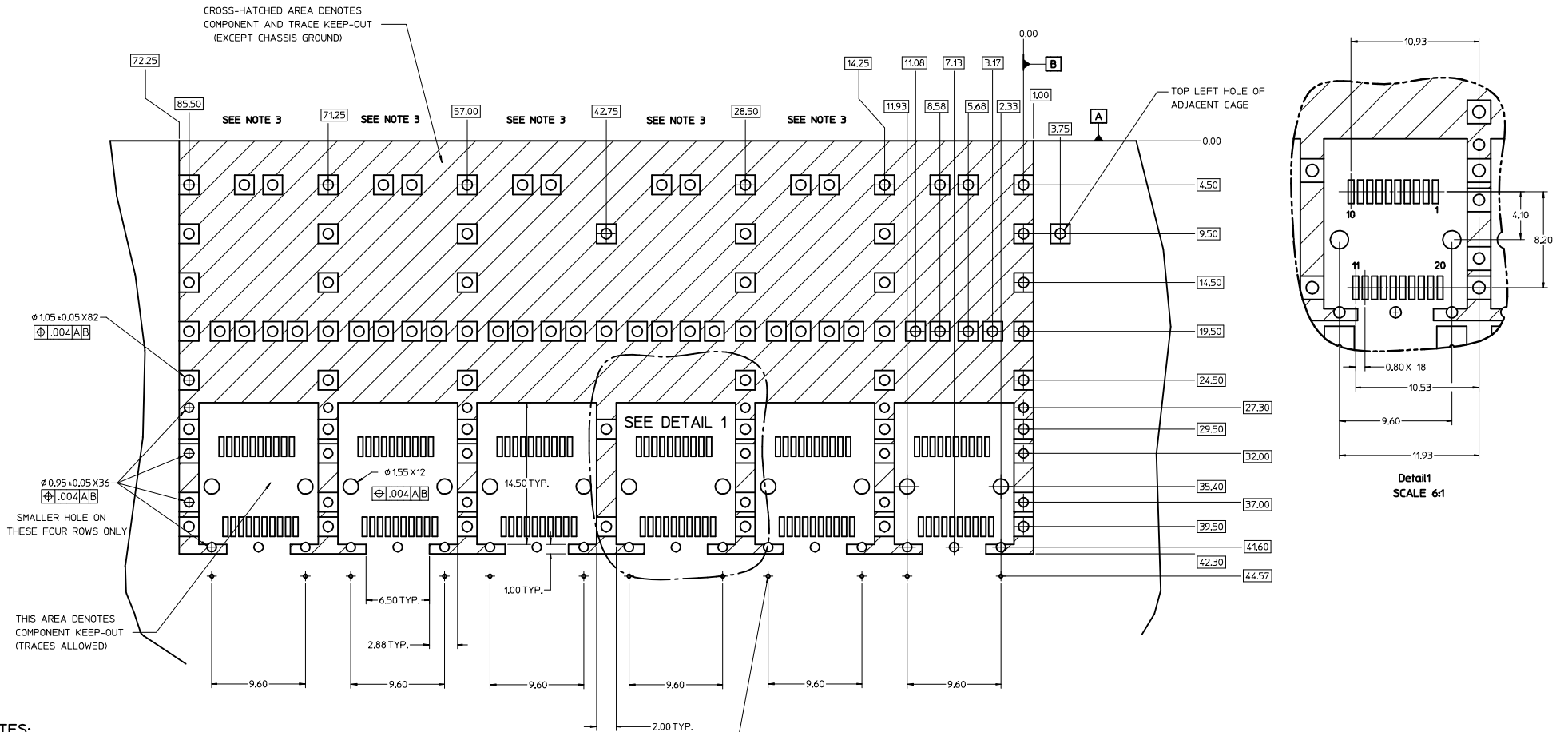
NOTE:

1. MATERIAL:
 LIGHT PIPE: LEXAN 940A (CLEAR)
 LIGHT PIPE COVER: 0.25 ±0.013 C770 NICKEL SILVER
1. PCB THICKNESS VARIATION MUST BE CONSIDERED WHEN DETERMINING BEZEL OPENING, SIZE LOCATION.
2. DIMENSIONS RELATED TO THE BEZEL/CAGE, ON THE TOP SIDE OF THE PCB ARE TYPICAL ON THE BOTTOM SIDE OF THE PCB.
3. LEAD FREE, NO RoHS EXEMPTIONS.

SEE REVISION TABLE IEC NO: CPG2013-0860 DRAWN: LERMIN 2008/08/13 CHYK: DARINE 2012/09/26 APPROV: K. LLOYD 2012/10/04 REV DESCRIPTION	QUALITY SYMBOLS	GENERAL TOLERANCES (UNLESS SPECIFIED)	DIMENSION STYLE	SCALE	DESIGN UNITS	THIRD ANGLE PROJECTION	
	▼=0 ▽=0	mm INCH 4 PLACES ± --- ± --- 3 PLACES ± --- ± --- 2 PLACES ± 0.13 ± --- 1 PLACE ± 0.25 ± --- ANGULAR ± ---°	MM ONLY	3:1	METRIC	DRAWN BY DATE KSIMONSO 2004/07/08 CHECKED BY DATE BRUSSELL 2004/07/08 APPROVED BY DATE BRUSSELL 2004/07/08	
	DRAFT WHERE APPLICABLE MUST REMAIN WITHIN DIMENSIONS		MATERIAL NO. 747480001		DOCUMENT NO. SD-74748-001		TITLE 1X6 SFP LIGHT PIPE ASSEMBLY, BACK-TOP
	SIZE D		THIS DRAWING CONTAINS INFORMATION THAT IS PROPRIETARY TO MOLEX INCORPORATED AND SHOULD NOT BE USED WITHOUT WRITTEN PERMISSION		MOLEX MOLEX INCORPORATED		SHEET NO. 1 OF 5

PCB LAYOUT FOR BELLY TO BELLY MOUNTING

HOST CONNECTOR DETAIL



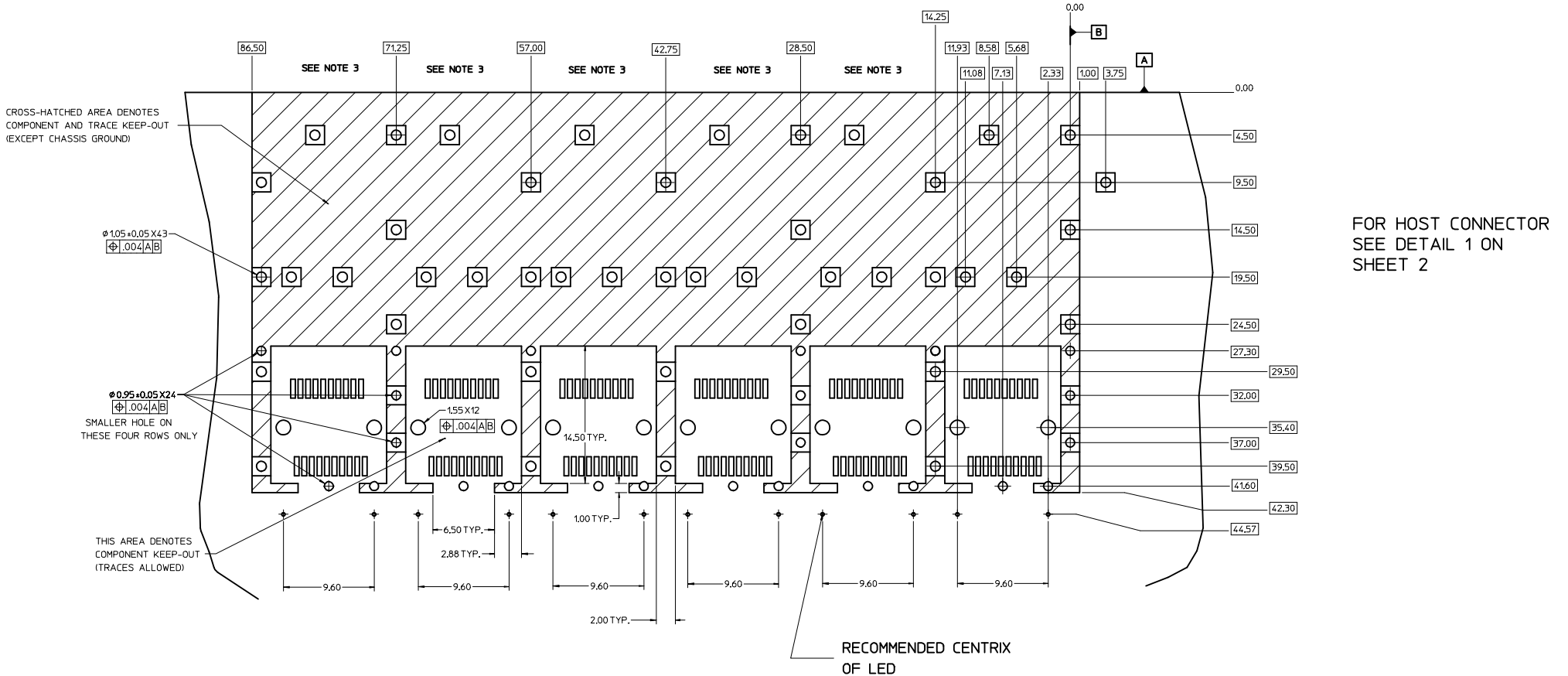
NOTES:

1. PADS AND VIAS CONNECT TO CHASSIS GROUND, (94 PLACES).
RECOMMENDED PADS TO BE 2mm SQUARE.
2. PLATING OPTIONAL FOR THROUGH HOLES (X PLACES)
3. RECOMMENDED PLATING INCLUDES HASL, IMMERSION (GOLD, SILVER, OR TIN), AND OSP.
4. HOLE PATTERN REPEATS FOR EACH PORT,
SPACING BETWEEN PORTS IS 14.25mm
5. CONNECTOR PAD LAYOUT PER SFP MSA. WILL ACCOMODATE MOLEX CONNECTOR SERIES 74441 OR EQUIVALENT.
6. LEDS SHOULD BE PLACED RELATIVE TO THE SFP CONNECTOR POST HOLES.
7. DETAILS APPLY TO EACH PORT.

RECOMMENDED CENTRIX
OF LED

SEE REVISION TABLE EEC NO: CPG2013-0860 DRAWN: ERWIN CHECKED: ERWIN APPROVED: LLOYD	2008/08/13 2012/09/26 2012/10/04	DESCRIPTION CHYKARINE APPR: K LLOYD	QUALITY SYMBOLS ▽=0 ▽=0	GENERAL TOLERANCES (UNLESS SPECIFIED) <table border="1" style="width: 100%; border-collapse: collapse;"> <tr> <th></th> <th>mm</th> <th>INCH</th> </tr> <tr> <td>4 PLACES</td> <td>±---</td> <td>±---</td> </tr> <tr> <td>3 PLACES</td> <td>±---</td> <td>±---</td> </tr> <tr> <td>2 PLACES</td> <td>±0.13</td> <td>±---</td> </tr> <tr> <td>1 PLACE</td> <td>±0.25</td> <td>±---</td> </tr> <tr> <td>ANGULAR</td> <td colspan="2">±---</td> </tr> </table>		mm	INCH	4 PLACES	±---	±---	3 PLACES	±---	±---	2 PLACES	±0.13	±---	1 PLACE	±0.25	±---	ANGULAR	±---		DIMENSION STYLE MM ONLY	SCALE 5:1	DESIGN UNITS METRIC	THIRD ANGLE PROJECTION
		mm	INCH																							
	4 PLACES	±---	±---																							
	3 PLACES	±---	±---																							
2 PLACES	±0.13	±---																								
1 PLACE	±0.25	±---																								
ANGULAR	±---																									
				DRAWN BY KSI MONSO	DATE 2004/07/08	TITLE 1X6 SFP LIGHT PIPE ASSEMBLY, BACK-TOP																				
				CHECKED BY BRUSSELL	DATE 2004/07/08	MOLEX INCORPORATED																				
				APPROVED BY BRUSSELL	DATE 2004/07/08	MATERIAL NO. 747480001																				
				DOCUMENT NO. SD-74748-001		SHEET NO. 2 OF 5																				
				DRAFT WHERE APPLICABLE MUST REMAIN WITHIN DIMENSIONS																						
				THIS DRAWING CONTAINS INFORMATION THAT IS PROPRIETARY TO MOLEX INCORPORATED AND SHOULD NOT BE USED WITHOUT WRITTEN PERMISSION																						

PCB LAYOUT FOR SINGLE SIDE MOUNTING



FOR HOST CONNECTOR
SEE DETAIL 1 ON
SHEET 2

- NOTES:**
- PADS AND VIAS CONNECT TO CHASSIS GROUND, (49 PLACES).
RECOMMENDED PADS TO BE 2mm SQUARE.
 - PLATING OPTIONAL FOR THROUGH HOLES (X PLACES)
 - RECOMMENDED PLATING INCLUDES HASL, IMMERSION (GOLD, SILVER, OR TIN), AND OSP.
 - HOLE PATTERN REPEATS FOR EACH PORT,
SPACING BETWEEN PORTS IS 14.25mm
 - CONNECTOR PAD LAYOUT PER SFP MSA. WILL ACCOMODATE MOLEX CONNECTOR SERIES 74441 OR EQUIVALENT.
 - LEDS SHOULD BE PLACED RELATIVE TO THE SFP CONNECTOR POST HOLES.
 - DETAILS APPLY TO EACH PORT.

SEE REVISION TABLE IEC NO: CPG2013-0860 DRAWN: ERWIN 2008/08/13 CHECKED: KARINE 2012/09/26 APPROVED: LLOYD 2012/10/04	QUALITY SYMBOLS	GENERAL TOLERANCES (UNLESS SPECIFIED)	DIMENSION STYLE	SCALE	DESIGN UNITS	THIRD ANGLE PROJECTION
	▽=0 ▽=0	mm INCH 4 PLACES ±--- ±--- 3 PLACES ±--- ±--- 2 PLACES ±0.13 ±--- 1 PLACE ±0.25 ±--- ANGULAR ±---°	MM ONLY	6:1	METRIC	DATE 2004/07/08 DATE 2004/07/08 DATE 2004/07/08
	DRAFT WHERE APPLICABLE MUST REMAIN WITHIN DIMENSIONS	MATERIAL NO: 747480001	DOCUMENT NO: SD-74748-001	TITLE 1X6 SFP LIGHT PIPE ASSEMBLY, BACK-TOP		
		MOLEX INCORPORATED	SHEET NO: 3 OF 5			

