



Chipsmall Limited consists of a professional team with an average of over 10 year of expertise in the distribution of electronic components. Based in Hongkong, we have already established firm and mutual-benefit business relationships with customers from,Europe,America and south Asia,supplying obsolete and hard-to-find components to meet their specific needs.

With the principle of “Quality Parts,Customers Priority,Honest Operation,and Considerate Service”,our business mainly focus on the distribution of electronic components. Line cards we deal with include Microchip,ALPS,ROHM,Xilinx,Pulse,ON,Everlight and Freescale. Main products comprise IC,Modules,Potentiometer,IC Socket,Relay,Connector.Our parts cover such applications as commercial,industrial, and automotives areas.

We are looking forward to setting up business relationship with you and hope to provide you with the best service and solution. Let us make a better world for our industry!



## Contact us

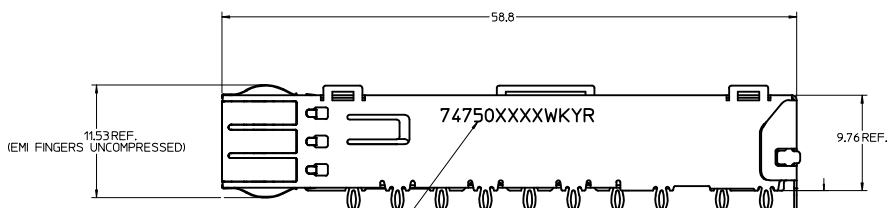
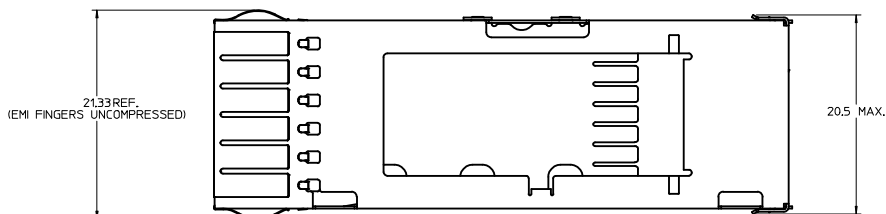
Tel: +86-755-8981 8866 Fax: +86-755-8427 6832

Email & Skype: info@chipsmall.com Web: www.chipsmall.com

Address: A1208, Overseas Decoration Building, #122 Zhenhua RD., Futian, Shenzhen, China



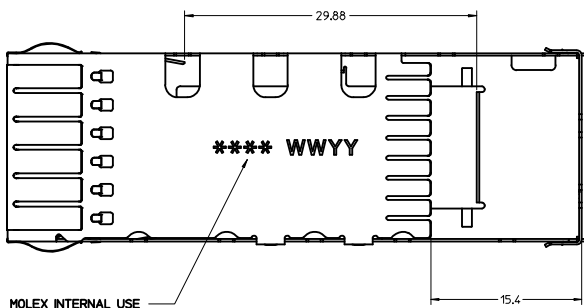
# CAGE DETAILS



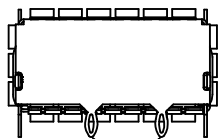
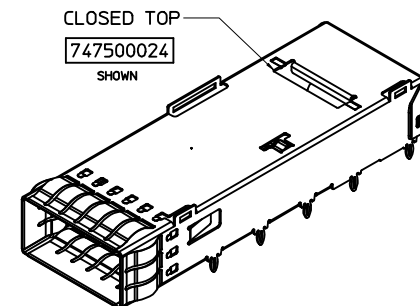
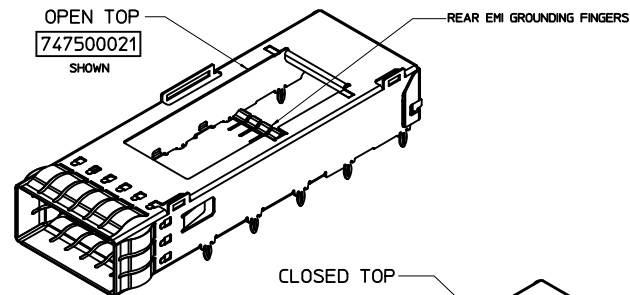
DIM A TYP.  
(SEE SHEET 3)

PART NO. AND WEEK/YEAR DATE CODE TO BE PRINTED ON  
SIDE OF COMPLETED CAGE ASSEMBLY APPROXIMATELY AS SHOWN.  
SEE TABLE BELOW FOR DATE CODE INFORMATION.

WEEK/YEAR DATE CODE TABLE	
WEEK	01 THRU 52 EXAMPLE: 01 = FIRST WEEK OF YEAR 52 = LAST WEEK OF YEAR
YEAR	10, 11, 12 ETC. EXAMPLE: YEAR 2010 = 10



MOLEX INTERNAL USE



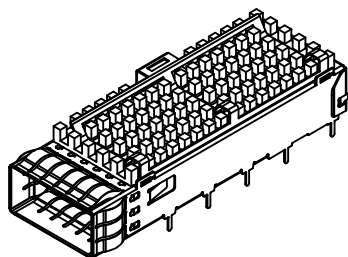
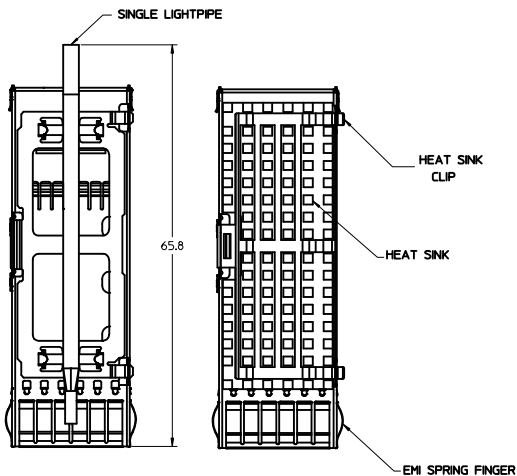
REAR PINS ARE OPTIONAL  
(SEE CHART)

## NOTES:

- PRESS FIT LEGS 2.28 / 3.05 mm LONG
- SOLDER POST LEGS 1.90 / 2.90 mm LONG
- SINGLE SIDED BOARD THICKNESS  
NOMINAL: 1.60  
MINIMUM: 1.44  
BELLY TO BELLY BOARD THICKNESS  
NOMINAL: 2.30  
MINIMUM: 2.07
- MATERIAL: COPPER ALLOY (PLATED PRIOR TO CUTTING AND FORMING)  
CAGE: 0.25 mm THICK COPPER ALLOY, NICKEL PLATED OR TIN  
SPRING FINGER: 0.08 mm THICK COPPER ALLOY, NICKEL PLATED  
HEAT SINK CLIP: STAINLESS STEEL  
LIGHT PIPES: POLYCARBONATE (UL 94-V0 RATED)  
HEATSINKS: ANNOXIDIZED ALUMINUM
- REFERENCE DOCUMENTS: PRODUCT SPECIFICATION: QSFP MSA
- CUSTOM HEATSINKS AVAILABLE UPON REQUEST
- QSFP+ ASSEMBLES ALSO AVAILABLE IN 1X2 (74767 SERIES),  
1X3 (74768 SERIES), 1X4 (74769 SERIES) AND 1X6 (74771 SERIES).
- PACKAGED IN TRAY.
- NO RoHS EXEMPTIONS.

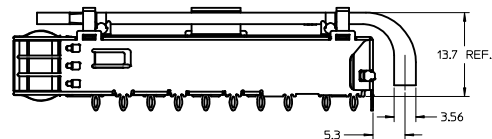
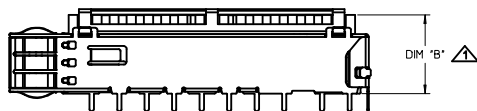
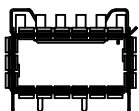
QUALITY SYMBOLS	GENERAL TOLERANCES (UNLESS SPECIFIED)		DIMENSION STYLE		SCALE	DESIGN UNITS	THIRD ANGLE PROJECTION
	mm	INCH	MM ONLY	DATE			
▽=0	4 PLACES ±	---	---	CHIRSCHY	4:1	METRIC	QSFP+ CAGE ASSEMBLY WITH SPRING FINGERS
▽=0	3 PLACES ±	---	---	CHIRSCHY	2007/07/23		
▽=0	2 PLACES ±	0.13	---	BRUSSELL	2007/07/23		molex
▽=0	1 PLACE ±	0.25	---	APPROVED BY	DATE		
▽=0	0 PLACE ±	---	---	RAHMOOD	2010/11/01		DOCUMENT NO. SD-74750-0021
ANGULAR ± 1 °				MATERIAL NO.		SHEET NO.	
DRAFT WHERE APPLICABLE MUST REMAIN WITHIN DIMENSIONS				SEE SHEET 3		1 OF 8	
THIS DRAWING CONTAINS INFORMATION THAT IS PROPRIETARY TO MOLEX INCORPORATED AND SHOULD NOT BE USED WITHOUT WRITTEN PERMISSION							

# CAGE ASSEMBLY OPTIONS

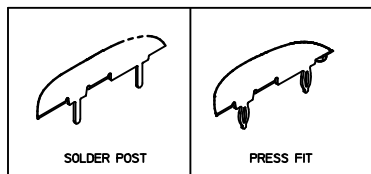


## HEATSHINK AND LIGHT PIPE OPTIONS

<p>HEAT SINK ONLY</p>	<p>SINGLE LIGHT PIPE</p> <p>MOLEX P/N: 747500030</p>
<p>DUAL LIGHT PIPE</p> <p>MOLEX P/N: 747500031</p>	



### PIN TYPE OPTIONS

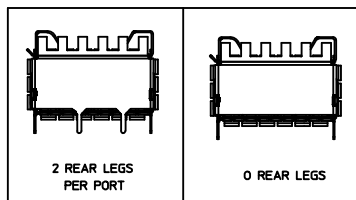


### HEATSINK HEIGHT OPTIONS

OVERALL HEATSINK HEIGHT	DIM B
PCI	13.7
SAN	16.0
NET	23.0

▲ HEIGHT OF HEATSINK WITH MODULE INSERTED.  
DIMENSION MAY BE LESS DUE TO MODULE AND HEATSINK VARIATIONS.

### REAR LEG OPTIONS



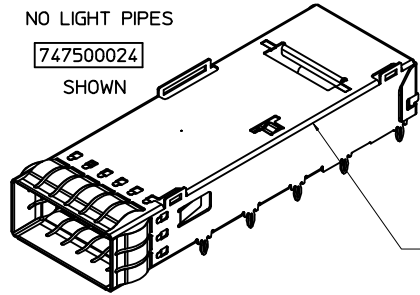
<b>SEE REVISION TABLE</b> EC NO: CPG2013-1899 DRAWN BY: DRWNRCHEN08 CHKD: APPR:KLLOYD DATE: 2012/12/25 2013/01/11	QUALITY SYMBOLS ∇=0 ∇=0 ∇=0	GENERAL TOLERANCES (UNLESS SPECIFIED): mm INCH 4 PLACES ± --- ± --- 3 PLACES ± --- ± --- 2 PLACES ± 0.13 ± --- 1 PLACE ± 0.25 ± --- 0 PLACE ± --- ± --- ANGULAR ± 1 ° DRAFT WHERE APPLICABLE MUST REMAIN WITHIN DIMENSIONS	DIMENSION STYLE MM ONLY DRAWN BY: CHIRSCHY DATE: 2007/07/23 CHECKED BY: BRUSSELL DATE: 2007/07/23 APPROVED BY: RMAHMOOD DATE: 2010/11/01	SCALE: 2.5:1 DESIGN UNITS: METRIC THIRD ANGLE PROJECTION	TITLE: QSFP+ CAGE ASSEMBLY WITH SPRING FINGERS MATERIAL NO. SD-74750-0021 DOCUMENT NO. SD-74750-0021
	THIS DRAWING CONTAINS INFORMATION THAT IS PROPRIETARY TO MOLEX INCORPORATED AND SHOULD NOT BE USED WITHOUT WRITTEN PERMISSION				
	SEE SHEET 3				
	SHEET NO. 2 OF 8				

## PART NUMBER SELECTION

NO HEATSINKS  
NO LIGHT PIPES

**747500024**

SHOWN

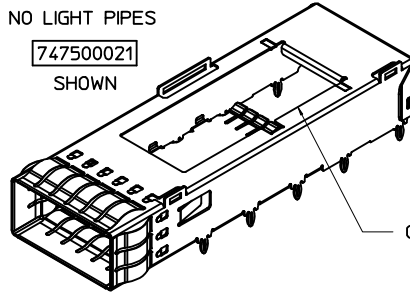


CLOSED TOP

NO HEATSINKS  
NO LIGHT PIPES

**747500021**

SHOWN

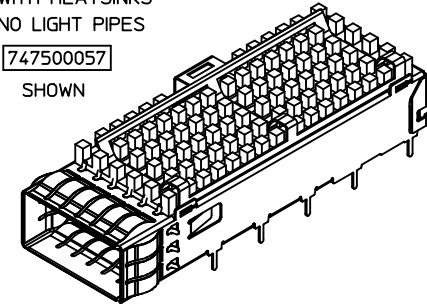


OPEN TOP

WITH HEATSINKS  
NO LIGHT PIPES

**747500057**

SHOWN



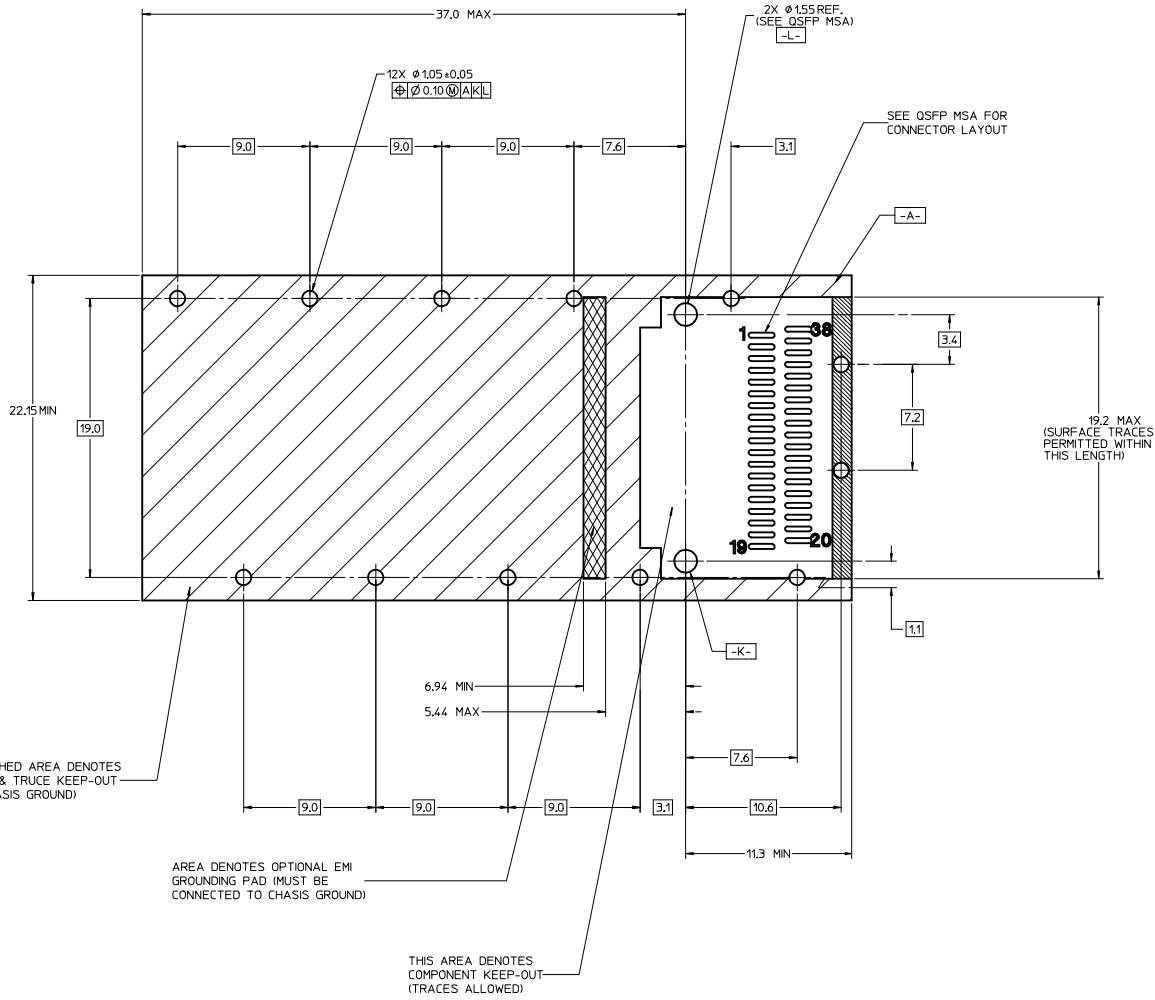
MOLEX P/N		# OF REAR LEGS PER PORT	DIM A	PLATING
PIN TYPE PRESS FIT	PIN TYPE SOLDER POST			
747500024	---	2	2.28	NICKEL
---	747500051	2	1.9	NICKEL
---	747500053	2	1.9	MATTE TIN
---	747500056	2	1.9	BRIGHT TIN

MOLEX P/N		# OF REAR LEGS PER PORT	DIM A	PLATING
PIN TYPE PRESS FIT	PIN TYPE SOLDER POST			
747500012	---	2	3.05	NICKEL
747500021	---	2	2.28	NICKEL
747500023	---	0	2.28	NICKEL
---	747500058	2	2.90	NICKEL

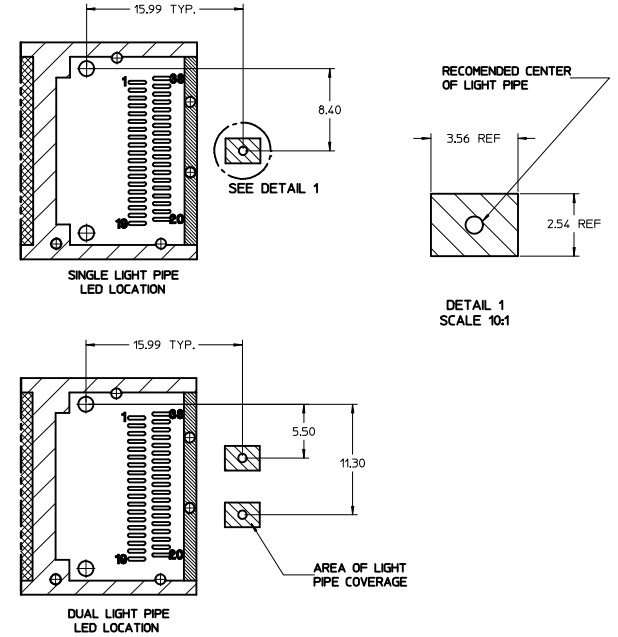
MOLEX P/N		# OF REAR LEGS PER PORT	DIM A	DIM B	PLATING
PIN TYPE PRESS FIT	PIN TYPE SOLDER POST				
---	747500057	2	2.9	13.7	NICKEL
747500040	---	2	2.28	16.0	NICKEL
747500042	---	0	2.28	16.0	NICKEL
747500044	---	2	2.28	13.7	NICKEL
747500046	---	2	2.28	23.0	NICKEL

<b>SEE REVISION TABLE</b> IEC NO: CPG2013-1899 J DRAWN: CHEN08 2010/10/25 CHYK: CHYK APPR: KLOYD 2013/01/11 REV DESCRIPTION	QUALITY SYMBOLS	GENERAL TOLERANCES (UNLESS SPECIFIED)	DIMENSION STYLE	SCALE	DESIGN UNITS	THIRD ANGLE PROJECTION	
	∇=0 ∇=0 ∇=0	mm    INCH 4 PLACES ± --- ± --- 3 PLACES ± --- ± --- 2 PLACES ± 0.13 ± --- 1 PLACE ± 0.25 ± --- 0 PLACE ± --- ± ---	MM ONLY 2.5:1 METRIC	DRAWN BY DATE CHIRSCHY 2007/07/23 CHECKED BY DATE BRUSSELL 2007/07/23 APPROVED BY DATE RMAHMOOD 2010/11/01	TITLE QSFP+ CAGE ASSEMBLY WITH SPRING FINGERS	MATERIAL NO. SEE SHEET 3	DOCUMENT NO. SD-74750-0021
	ANGULAR ± 1 ° DRAFT WHERE APPLICABLE MUST REMAIN WITHIN DIMENSIONS	SHEET NO. 3 OF 8	<b>molex</b>				
	THIS DRAWING CONTAINS INFORMATION THAT IS PROPRIETARY TO MOLEX INCORPORATED AND SHOULD NOT BE USED WITHOUT WRITTEN PERMISSION						

PCB LAYOUT FOR SINGLE SIDED APPLICATIONS



FOR CAGE ASSEMBLIES WITH LIGHT PIPES

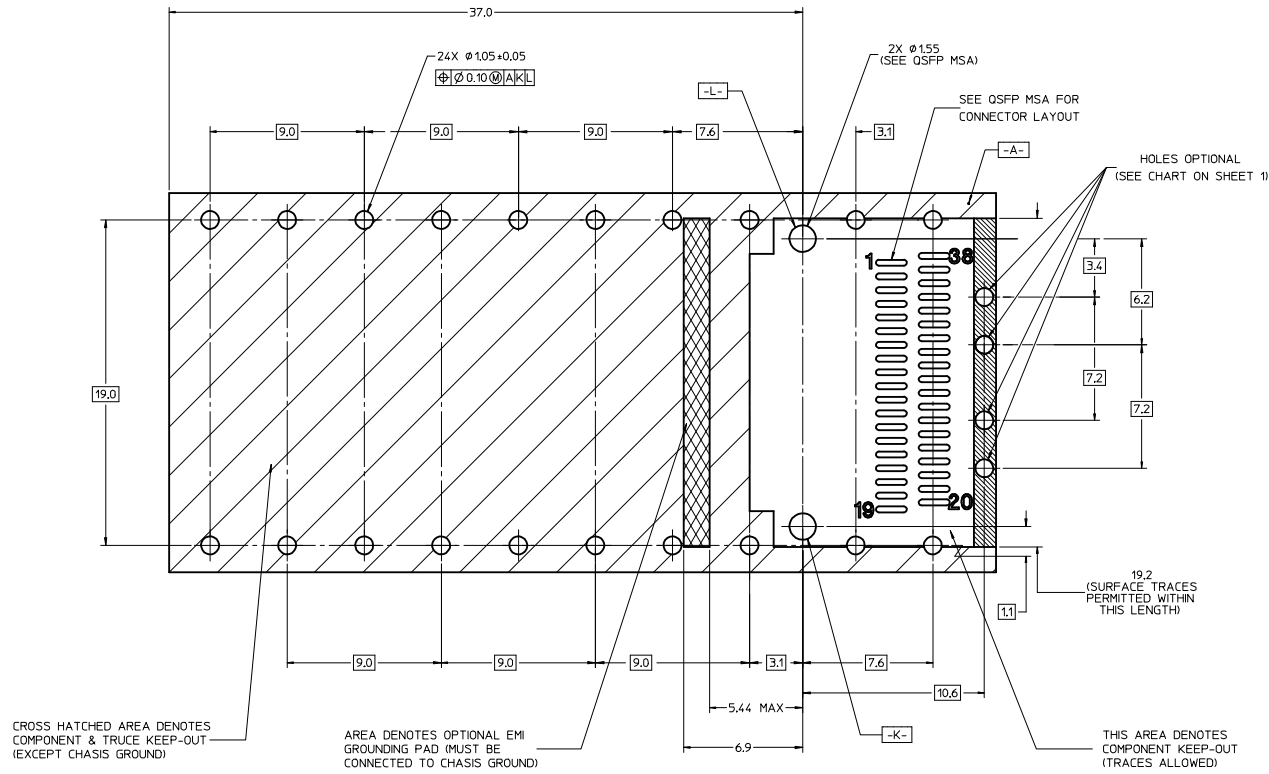


NOTES:

1. DATUM -A- IS TOP SURFACE OF HOST BOARD PER MSA
2. FINISHED HOLE SIZE (AFTER PLATING)
3. DATUM -K- IS HOST BOARD THRU HOLE #1 TO ACCEPT CONNECTOR GUIDE POST PER MSA
4. DATUM -L- IS HOST BOARD THRU HOLE #2 TO ACCEPT CONNECTOR GUIDE POST PER MSA

<b>SEE REVISION TABLE</b> EC NO: CPG2013-1899 DRAWN BY: DRWNRCHEN08 CHYD: APPR:KLLOYD DATE: 2012/10/25 DESCRIPTION: 2013/01/11	QUALITY SYMBOLS ∇=0 ∇=0 ∇=0		GENERAL TOLERANCES (UNLESS SPECIFIED) mm      INCH 4 PLACES ±--- ±--- 3 PLACES ±--- ±--- 2 PLACES ±0.13 ±--- 1 PLACE ±0.25 ±--- 0 PLACE ±--- ±---		DIMENSION STYLE MM ONLY		SCALE 1:1	DESIGN UNITS METRIC	THIRD ANGLE PROJECTION
	DRAWN BY: CHIRSCHY DATE: 2007/07/23		CHECKED BY: BRUSSELL DATE: 2007/07/23		APPROVED BY: MAHMOOD DATE: 2010/11/01		TITLE OSFP+ CAGE ASSEMBLY WITH SPRING FINGERS		
	MATERIAL NO.		SEE SHEET 3		DOCUMENT NO. SD-74750-0021		SHEET NO. 4 OF 8		
	DRAFT WHERE APPLICABLE MUST REMAIN WITHIN DIMENSIONS SIZE D THIS DRAWING CONTAINS INFORMATION THAT IS PROPRIETARY TO MOLEX INCORPORATED AND SHOULD NOT BE USED WITHOUT WRITTEN PERMISSION								

PCB LAYOUT FOR BELLY-TO-BELLY APPLICATIONS



NOE:  
FOR RECOMENDED CENTER  
OF LIGHT PIPES,  
SEE SHEET 4

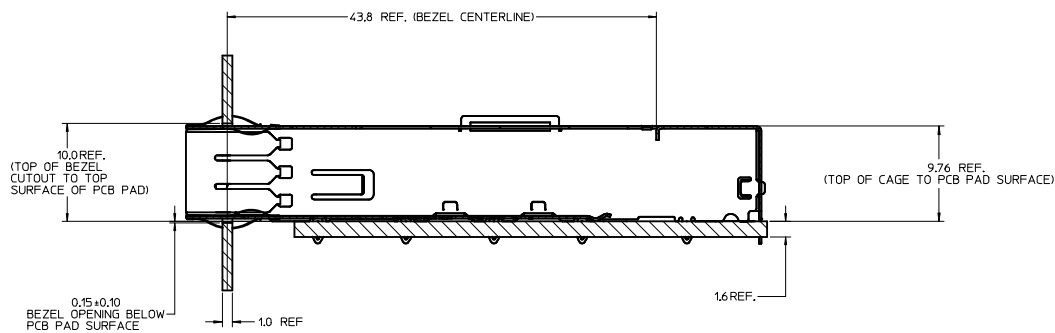
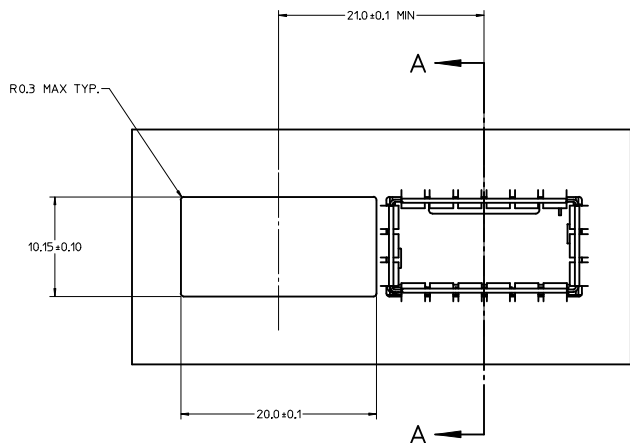
NOTES:

1. DATUM -A- IS TOP SURFACE OF HOST BOARD PER MSA.
2. FINISHED HOLE SIZE (AFTER PLATING).
3. DATUM -K- IS HOST BOARD THRU HOLE #1 TO ACCEPT CONNECTOR GUIDE POST PER MSA.
4. DATUM -L- IS HOST BOARD THRU HOLE #2 TO ACCEPT CONNECTOR GUIDE POST PER MSA.

<b>SEE REVISION TABLE</b> EC NO: CPG2013-899 DRAWN BY: DRWARCHEN08 CHKD: CHYD APPR: KLOYD DATE: 2010/10/25 DESCRIPTION:	QUALITY SYMBOLS	GENERAL TOLERANCES (UNLESS SPECIFIED)	DIMENSION STYLE	SCALE	DESIGN UNITS	THIRD ANGLE PROJECTION
	▽=0	mm INCH	MM ONLY	1:1	METRIC	☉
	▽=0	4 PLACES ± ---	DRAWN BY: CHIRSCHY	DATE: 2007/07/23	TITLE: QSFP+ CAGE ASSEMBLY WITH SPRING FINGERS	
	▽=0	3 PLACES ± ---	CHECKED BY: BRUSSELL	DATE: 2007/07/23		
	ANGULAR ± 1 °	DRAFT WHERE APPLICABLE MUST REMAIN WITHIN DIMENSIONS	APPROVED BY: RMAHMOOD	DATE: 2010/11/01	DOCUMENT NO. SD-74750-0021	SHEET NO. 5 OF 8
	SIZE D	THIS DRAWING CONTAINS INFORMATION THAT IS PROPRIETARY TO MOLEX INCORPORATED AND SHOULD NOT BE USED WITHOUT WRITTEN PERMISSION				

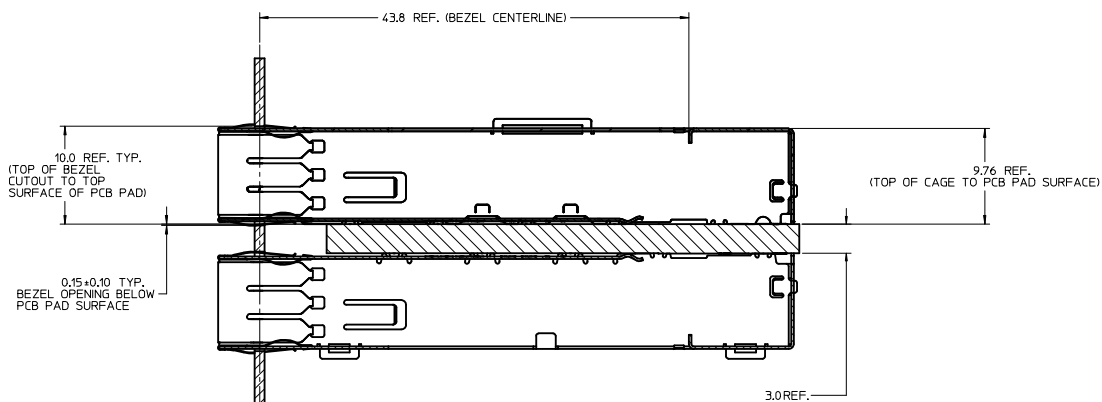
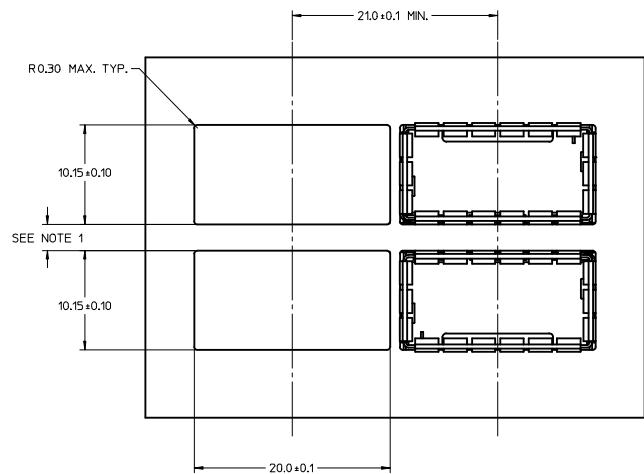


BEZEL AND BOARD POSITION DIMENSIONS  
FOR SINGLE SIDE MOUNTING



SECTION A-A  
Scale 4:1

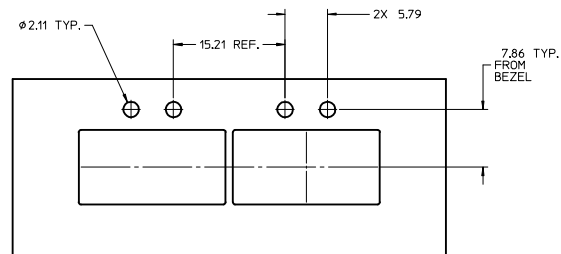
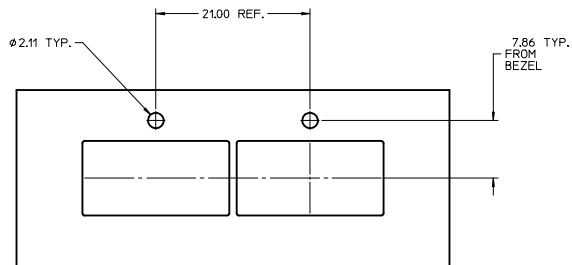
BEZEL AND BOARD POSITION DIMENSIONS  
FOR BELLY-TO-BELLY MOUNTING



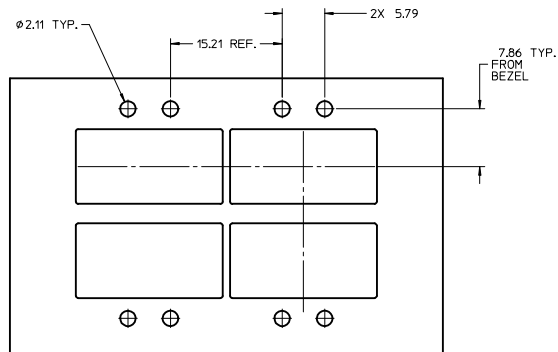
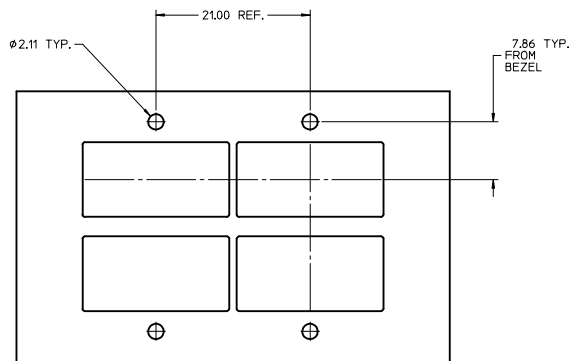
NOTE:  
1. SEE QSFP MSA SPECIFICATION FOR BEZEL LOCATION TOLERANCE.  
2. PCB THICKNESS VARIATION MUST BE CONSIDERED WHEN DETERMINING BEZEL OPENING, SIZE, AND LOCATION.

SEE REVISION TABLE EC NO: CPG2013-1899 DRAWN BY: J CHKD: J APPR: KLOYD	QUALITY SYMBOLS	GENERAL TOLERANCES (UNLESS SPECIFIED)		DIMENSION STYLE		SCALE	DESIGN UNITS	THIRD ANGLE PROJECTION
	▽=0	mm	INCH	MM ONLY		1:1	METRIC	☉
	▽=0	4 PLACES ± ---	± ---	DRAWN BY	DATE	TITLE		
	▽=0	3 PLACES ± 0.13	± ---	CHIRSCHY	2007/07/23	QSFP+ CAGE ASSEMBLY WITH SPRING FINGERS		
	2 PLACES ± 0.25	± ---	CHECKED BY	DATE	molex			
	1 PLACE ± ---	± ---	BRUSSELL	2007/07/23	SD-74750-0021			
	0 PLACE ± ---	± ---	APPROVED BY	DATE	SHEET NO.			
			RAHMOOD	2010/11/01	6 OF 8			
					DOCUMENT NO.			
					SD-74750-0021			
					THIS DRAWING CONTAINS INFORMATION THAT IS PROPRIETARY TO MOLEX INCORPORATED AND SHOULD NOT BE USED WITHOUT WRITTEN PERMISSION			

BEZEL LIGHT PIPE CUTOUT POSITION DIMENSIONS  
FOR SINGLE SIDE MOUNTING



BEZEL LIGHT PIPE CUTOUT POSITION DIMENSIONS  
FOR BELLY-TO-BELLY MOUNTING



<b>SEE REVISION TABLE</b> IEC NO: CPG2013-1899 DRAWN BY: CHYKJ CHECKED BY: APPR:KLLOYD DATE: 2010/11/11 DESCRIPTION:	QUALITY SYMBOLS	GENERAL TOLERANCES (UNLESS SPECIFIED)	DIMENSION STYLE	SCALE	DESIGN UNITS	THIRD ANGLE PROJECTION
	▽=0	mm INCH	MM ONLY	3:1	METRIC	☉
	▽=0	4 PLACES ± --- ± ---	DRAWN BY: CHIRSCHY	DATE: 2007/07/23	TITLE: QSFP+ CAGE ASSEMBLY WITH SPRING FINGERS	
	▽=0	3 PLACES ± --- ± ---	CHECKED BY: BRUSSELL	DATE: 2007/07/23	<b>molex</b> DOCUMENT NO. SD-74750-0021 SHEET NO. 7 OF 8	
	2 PLACES ± 0.13 ± ---	APPROVED BY: RMAHMOOD	DATE: 2010/11/01			
	1 PLACE ± 0.25 ± ---	ANGULAR ± 1 °	MATERIAL NO. SEE SHEET 3	THIS DRAWING CONTAINS INFORMATION THAT IS PROPRIETARY TO MOLEX INCORPORATED AND SHOULD NOT BE USED WITHOUT WRITTEN PERMISSION		
	0 PLACE ± --- ± ---	DRAFT WHERE APPLICABLE MUST REMAIN WITHIN DIMENSIONS	SIZE D			



DATE	REV	DESCRIPTION
2007/07/23	A	INITAL RELEASE
2007/08/06	B	CHANGED ALL TANGENT LINES FROM DASHED LINES TO SOLID LINES
2007/08/10	C	1. ADDED COMPONENT P/N COLUMN TO TABLE 2. ADDED "COMPONENT" TO NOTE IN BOTTOM VIEW ON SHEET 1 3. CHANGED TEXT IN MATERIAL NO. SECTION OF TITLE BLOCK TO READ "SEE TABLE"
2008/07/10	D	1. REMOVED COMMENTS FROM TABLE ON SHEET 1 2. ADDED "HOLES OPTIONAL" NOTE TO PCB LAYOUT ON SHEET 2 AND SHEET 3 3. ADDED 747500024 TO TABLE ON SHEET 1 AS WELL AS ISO VIEW 4. UPDATED "COMPONENT PART NUMBER AND DATE CODE" NOTE ON SHEET 1
2008/12/16	E	1. 20.4 DIMENSION WAS 20.38 REF. 2. 58.8 DIMENSION WAS 58.80 REF. 3. 2.28 TYP. DIMENSION WAS 2.28 REF. 4. 15.4 DIMENSION WAS 15.40 REF.
2009/04/13	F	1. REVISED COMPONENT P/N FOR MOLEX P/N 747500024 (CHANGED FROM 747540104 TO 747500104)
2010/10/29	G	1. 20.5 MAX DIMENSION WAS 20.4 2. 19.2 MAX DIMENSION WAS 16.2 MAX
2011/04/05	H	1. ADDED PRINTED DATE CODE TO LEFT SIDE OF CAGE AND ASSOCIATED NOTES. 2. ADDED CUTAWAY 1 AND CRITICAL TO FUNCTION DIMENSION 29.88 ±0.15, SHEET 1. 3. REMOVED 74750 FROM BOTTOM OF CAGE, SHEET 1. 4. UPDATED RoHS NOTE (NOTE 5) TO "LEAD FREE, NO RoHS EXEMPTIONS" ON SHEET 1. 5. ADDED END VIEW, SHEET 1.
2012/04/13	I	1. ADDED 747500012 TO P/N TABLE, SHEET 1. 2. UPDATED BELLY-TO-BELLY CAGE VIEW, SHEET 3. 3. ADDED BELLY-TO-BELLY BEZEL AND DIMENSIONS, SHEET 3.
2013/01/10	J	1. ADDED 747500057 AND 747500058 INTO P/N TABLE, SHEET 3. 2. REARRANGE EACH SHEET

<b>SEE REVISION TABLE</b> EC NO: CPG2013-899 2012/12/25 J DRWNRCHEN08 CHKD: APPR:KLLOYD 2013/01/11	QUALITY SYMBOLS ∇=0 ∇=0 ∇=0	GENERAL TOLERANCES (UNLESS SPECIFIED) mm INCH		DIMENSION STYLE <b>MM ONLY</b>	SCALE <b>1:1</b>	DESIGN UNITS <b>METRIC</b>	THIRD ANGLE PROJECTION
		4 PLACES ±--- ±--- 3 PLACES ±--- ±--- 2 PLACES ±0.13 ±--- 1 PLACE ±0.25 ±--- 0 PLACE ±--- ±---	DRAWN BY CHIRSCHY	DATE 2007/07/23	TITLE <b>QSFP+ CAGE ASSEMBLY WITH SPRING FINGERS</b>		
		ANGULAR ± 1 ° DRAFT WHERE APPLICABLE MUST REMAIN WITHIN DIMENSIONS	CHECKED BY BRUSSELL	DATE 2007/07/23	MATERIAL NO. <b>SEE SHEET 3</b>		
		APPROVED BY RMAHMOOD	DATE 2010/11/01	DOCUMENT NO. <b>SD-74750-0021</b>	SHEET NO. <b>8 OF 8</b>		

THIS DRAWING CONTAINS INFORMATION THAT IS PROPRIETARY TO MOLEX INCORPORATED AND SHOULD NOT BE USED WITHOUT WRITTEN PERMISSION