



Chipsmall Limited consists of a professional team with an average of over 10 year of expertise in the distribution of electronic components. Based in Hongkong, we have already established firm and mutual-benefit business relationships with customers from,Europe,America and south Asia,supplying obsolete and hard-to-find components to meet their specific needs.

With the principle of “Quality Parts,Customers Priority,Honest Operation,and Considerate Service”,our business mainly focus on the distribution of electronic components. Line cards we deal with include Microchip,ALPS,ROHM,Xilinx,Pulse,ON,Everlight and Freescale. Main products comprise IC,Modules,Potentiometer,IC Socket,Relay,Connector.Our parts cover such applications as commercial,industrial, and automotives areas.

We are looking forward to setting up business relationship with you and hope to provide you with the best service and solution. Let us make a better world for our industry!



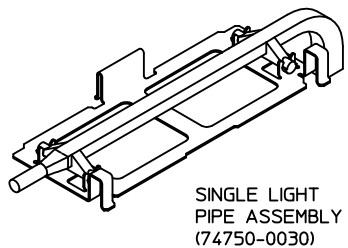
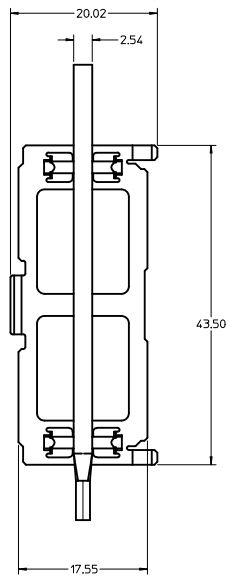
Contact us

Tel: +86-755-8981 8866 Fax: +86-755-8427 6832

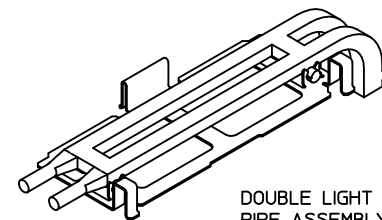
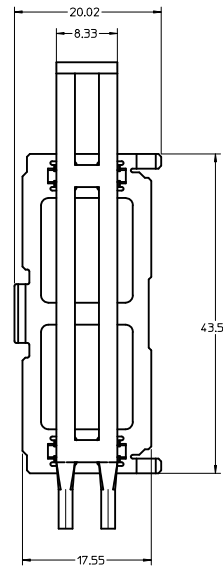
Email & Skype: info@chipsmall.com Web: www.chipsmall.com

Address: A1208, Overseas Decoration Building, #122 Zhenhua RD., Futian, Shenzhen, China

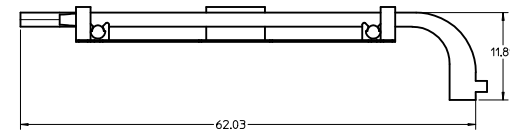
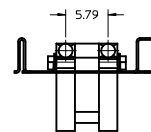
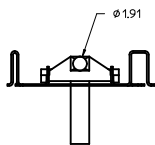




SINGLE LIGHT
PIPE ASSEMBLY
(74750-0030)



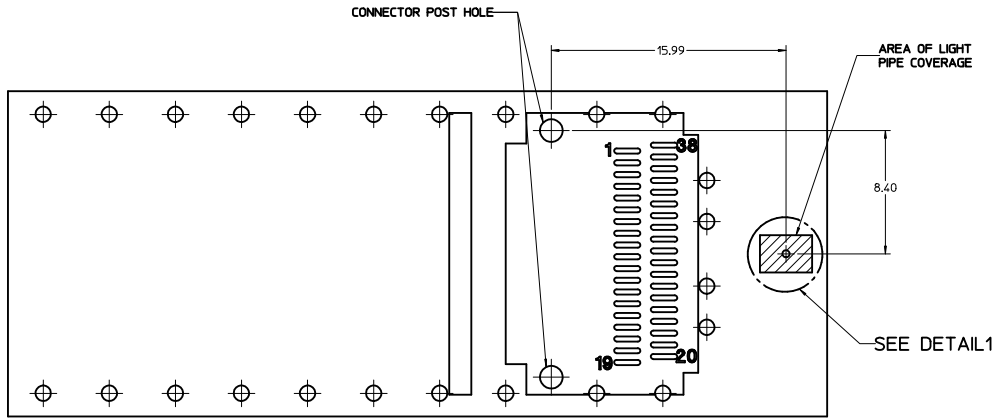
DOUBLE LIGHT
PIPE ASSEMBLY
(74750-0031)



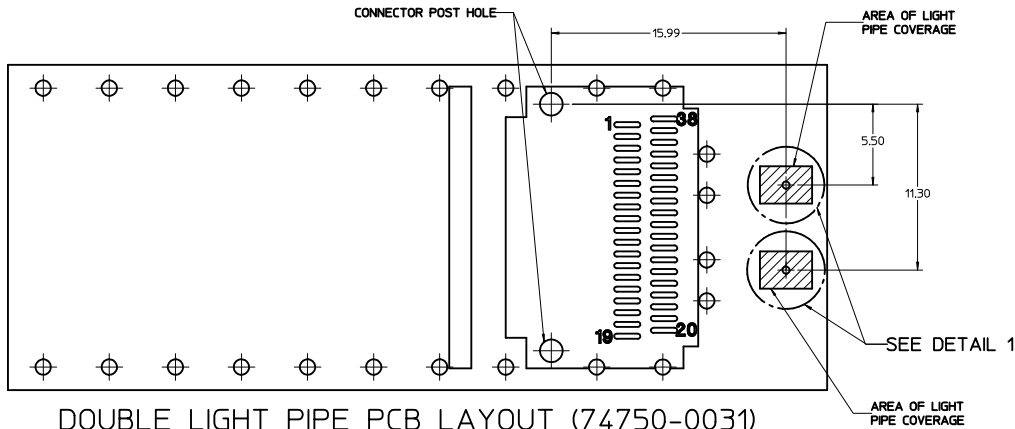
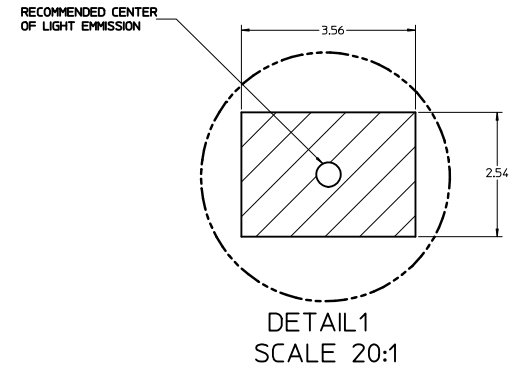
NOTES:

- MATERIALS:
LIGHT PIPE CLIP: UNPLATED STAINLESS STEEL
LIGHT PIPE: CLEAR LEXAN
- THESE LIGHT PIPE ASSEMBLIES TO BE USED WITH THE QSFP CAGE ASSEMBLY (74750-0001)
- IT IS RECOMMENDED THAT THE CAGE ASSEMBLY BE PRESSED INTO THE PCB PRIOR TO ASSEMBLING THE LIGHT PIPE ASSEMBLY
- RECOMMENDED LED'S INCLUDE THE FOLLOWING MANUFACTURERS:
DIALIGHT: 597-77X1-5XX SERIES
CHICAGO MINIATURE: 7016 SERIES
KINGBRIGHT: APBL3025 SERIES (BICOLOR)
APL3015 SERIES (SINGLE COLOR)
- THIS PRODUCT MEETS THE RESTRICTION OF HAZARDOUS SUBSTANCES IN ELECTRICAL AND ELECTRONIC EQUIPMENT (RoHS) DIRECTIVE (2002/95/EC)

ENTER DESCRIPTION IEC NO. USY2010-0460 DRAWN BY CHYKORUSSELL 2007/01/10 CHECKED BY APPRO:RAHMOOD 2010/03/31	QUALITY SYMBOLS ▽=0 ▽=0	GENERAL TOLERANCES (UNLESS SPECIFIED)		DIMENSION STYLE MM ONLY	SCALE 3:1	DESIGN UNITS METRIC	<input checked="" type="checkbox"/> THIRD ANGLE PROJECTION		
		4 PLACES ± mm INCH ± ---	3 PLACES ± --- ± ---	2 PLACES ± 0.13 ± ---	1 PLACE ± 0.25 ± ---	DRAWN BY DATE CHIRSCHY 2007/01/10	CHECKED BY DATE BRUSSELL 2007/01/10	TITLE QSFP LIGHT PIPE ASSEMBLIES	
		APPROVED BY DATE RAHMOOD 2010/03/31		WATERL NO. SEE ABOVE		DOCUMENT NO. SD-74750-0030		MOLEX INCORPORATED	
		DRAFT WHERE APPLICABLE MUST REMAIN WITHIN DIMENSIONS		SIZE D		THIS DRAWING CONTAINS INFORMATION THAT IS PROPRIETARY TO MOLEX INCORPORATED AND SHOULD NOT BE USED WITHOUT WRITTEN PERMISSION			

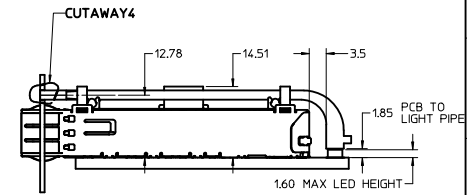
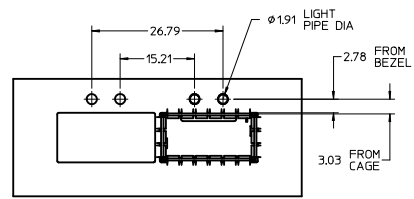
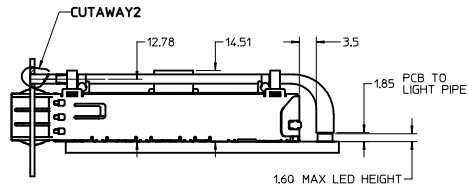
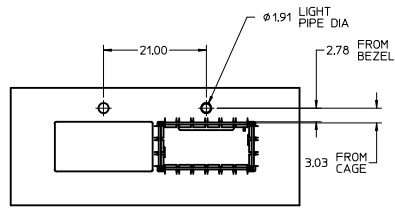
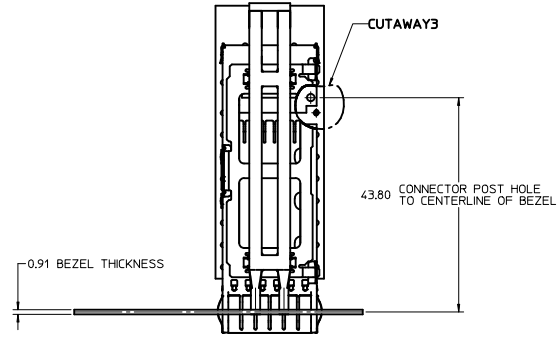
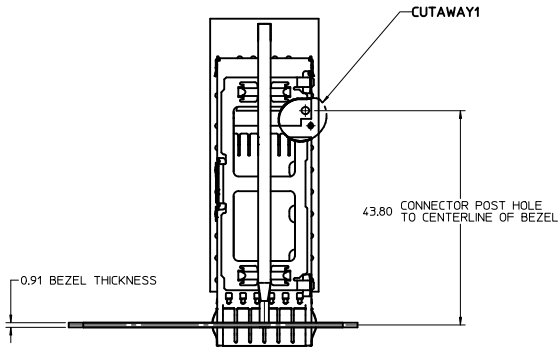


SINGLE LIGHT PIPE PCB LAYOUT (74750-0030)



DOUBLE LIGHT PIPE PCB LAYOUT (74750-0031)

ENTER DESCRIPTION IEC NO. USY2010-0460 DRAWN BY CHIRRSCHY 2008/07/08 CHECKED BY CHYD BRUSSELL 2007/01/10 APPROVED BY APPR:RAHMOOD 2010/03/31 REV DESCRIPTION	QUALITY SYMBOLS ▽=0 ▽=0		GENERAL TOLERANCES (UNLESS SPECIFIED)		DIMENSION STYLE MM ONLY		SCALE 6:1		DESIGN UNITS METRIC		THIRD ANGLE PROJECTION	
	4 PLACES ± --- ± ---		mm INCH		DRAWN BY DATE CHIRRSCHY 2007/01/10		TITLE QSFP LIGHT PIPE ASSEMBLIES		MOLEX INCORPORATED			
	3 PLACES ± --- ± ---				CHECKED BY DATE BRUSSELL 2007/01/10							
	2 PLACES ± 0.13 ± ---				APPROVED BY DATE RAHMOOD 2010/03/31		MATERIAL NO. SEE SHEET 1		DOCUMENT NO. SD-74750-0030		SHEET NO. 2 OF 4	
1 PLACE ± 0.25 ± ---				ANGULAR ± 1°		SIZE D		THIS DRAWING CONTAINS INFORMATION THAT IS PROPRIETARY TO MOLEX INCORPORATED AND SHOULD NOT BE USED WITHOUT WRITTEN PERMISSION				
DRAFT WHERE APPLICABLE MUST REMAIN WITHIN DIMENSIONS												



ENTER DESCRIPTION IEC NO. USY2010-0460 DRAWN BY CHIRRSCHY 2008/07/08 CHECKED BY CHYD BRUSSELL 2007/01/10 APPROVED BY APPR:RMAHMOOD 2010/03/31	QUALITY SYMBOLS	GENERAL TOLERANCES (UNLESS SPECIFIED)	DIMENSION STYLE	SCALE	DESIGN UNITS	THIRD ANGLE PROJECTION
	$\nabla=0$ $\nabla=0$	mm INCH 4 PLACES ± --- ± --- 3 PLACES ± --- ± --- 2 PLACES ± 0.13 ± --- 1 PLACE ± 0.25 ± --- ANGULAR ± 1°	MM ONLY	2:1	METRIC	
	DESCRIPTION	DRAFT WHERE APPLICABLE MUST REMAIN WITHIN DIMENSIONS	DRAWN BY DATE CHIRRSCHY 2007/01/10 CHECKED BY DATE BRUSSELL 2007/01/10 APPROVED BY DATE RMAHMOOD 2010/03/31	TITLE	QSFP LIGHT PIPE ASSEMBLIES	
	WATERL. NO. SEE SHEET 1 SIZE D THIS DRAWING CONTAINS INFORMATION THAT IS PROPRIETARY TO MOLEX INCORPORATED AND SHOULD NOT BE USED WITHOUT WRITTEN PERMISSION		MATERIAL NO. SD-74750-0030 DOCUMENT NO. 3 OF 4	MOLEX INCORPORATED	SHEET NO.	

DATE	REV	DESCRIPTION
2008/04/03	A	INITIAL RELEASE
2009/04/13	B	UPDATED VIEWS TO SHOW TOOLING CHANGES IN LIGHT PIPE CLIP AND CAGE (NO DIMENSIONS AFFECTED)

ENTER DESCRIPTION IEC NO: USY2010-0460 DRAWN BY: CHIRRSCHY 2008/07/08 CHECKED BY: CHYKBRUSSELL 2007/01/10 APPR: RMAHMOOD 2010/03/31	QUALITY SYMBOLS =0 =0	GENERAL TOLERANCES (UNLESS SPECIFIED)		DIMENSION STYLE MM ONLY	SCALE 1:1	DESIGN UNITS METRIC	THIRD ANGLE PROJECTION		
		4 PLACES ± --- ± --- 3 PLACES ± --- ± --- 2 PLACES ± 0.13 ± --- 1 PLACE ± 0.25 ± ---	mm INCH	DRAWN BY: CHIRRSCHY 2007/01/10 CHECKED BY: BRUSSELL 2007/01/10 APPROVED BY: RMAHMOOD 2010/03/31	DATE: 2007/01/10 DATE: 2007/01/10 DATE: 2010/03/31	TITLE: QSFP LIGHT PIPE ASSEMBLIES			
		ANGULAR ± 1 °		MATERIAL NO. SEE SHEET 1		DOCUMENT NO. SD-74750-0030		SHEET NO. 4 OF 4	
		DRAFT WHERE APPLICABLE MUST REMAIN WITHIN DIMENSIONS		THIS DRAWING CONTAINS INFORMATION THAT IS PROPRIETARY TO MOLEX INCORPORATED AND SHOULD NOT BE USED WITHOUT WRITTEN PERMISSION					