



Chipsmall Limited consists of a professional team with an average of over 10 year of expertise in the distribution of electronic components. Based in Hongkong, we have already established firm and mutual-benefit business relationships with customers from,Europe,America and south Asia,supplying obsolete and hard-to-find components to meet their specific needs.

With the principle of “Quality Parts,Customers Priority,Honest Operation,and Considerate Service”,our business mainly focus on the distribution of electronic components. Line cards we deal with include Microchip,ALPS,ROHM,Xilinx,Pulse,ON,Everlight and Freescale. Main products comprise IC,Modules,Potentiometer,IC Socket,Relay,Connector.Our parts cover such applications as commercial,industrial, and automotives areas.

We are looking forward to setting up business relationship with you and hope to provide you with the best service and solution. Let us make a better world for our industry!



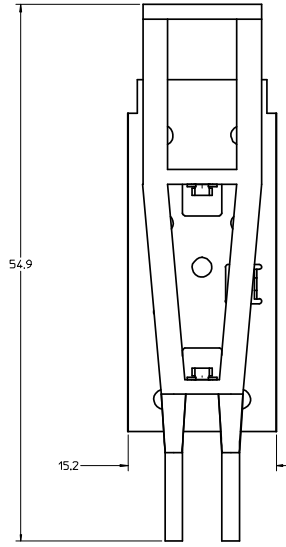
## Contact us

Tel: +86-755-8981 8866 Fax: +86-755-8427 6832

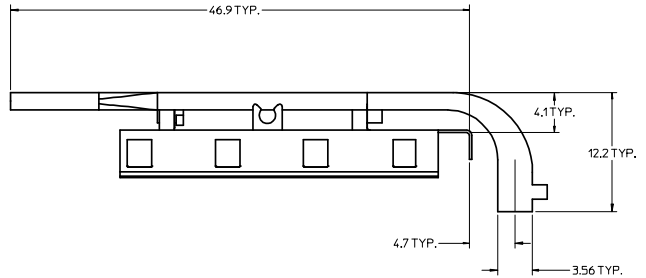
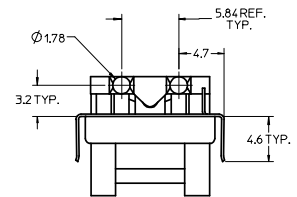
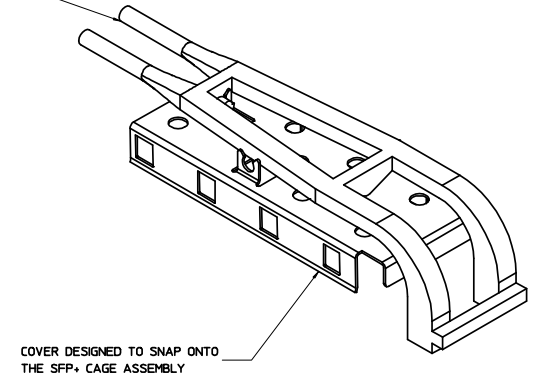
Email & Skype: info@chipsmall.com Web: www.chipsmall.com

Address: A1208, Overseas Decoration Building, #122 Zhenhua RD., Futian, Shenzhen, China



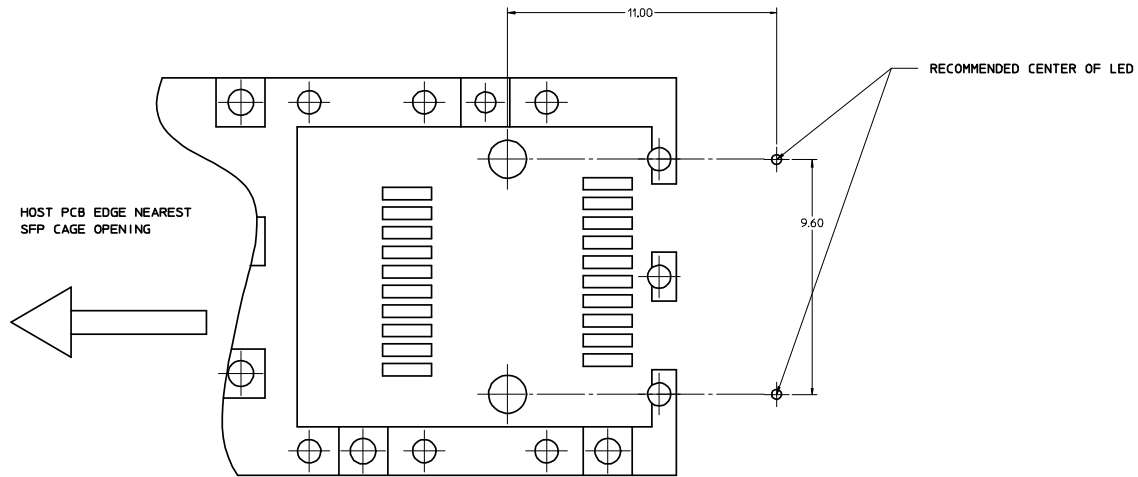
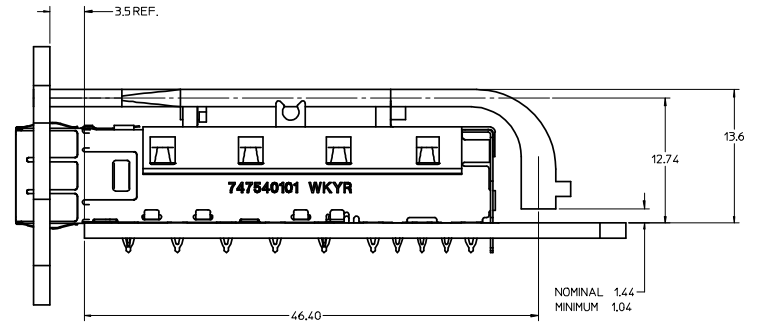
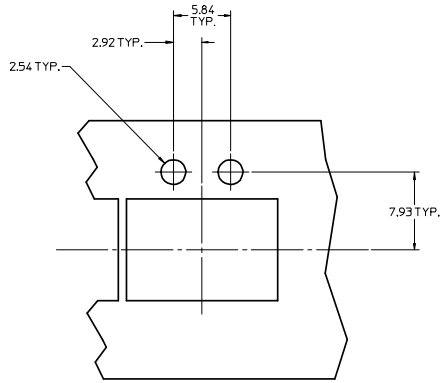


LIGHT PIPES SECURED TO METAL CAGE COVER



- MATERIAL :**  
COVER: COPPER ALLOY  
LIGHT PIPE: POLYCARBONATE (94-V0 RATED)
- THIS LIGHT PIPE ASSEMBLY IS TO BE USED WITH THE SFP+ 1X CAGE ASSEMBLY P/N 7475401\*\*
- IT IS RECOMMENDED THAT THE CAGE BE PRESSED INTO OR SOLDERED TO THE PCB PRIOR TO ASSEMBLING THE LIGHT PIPE ASSEMBLY.
- THIS PART MEETS THE RESTRICTION OF HAZARDOUS SUBSTANCES IN ELECTRICAL AND ELECTRONIC EQUIPMENT (RoHS) DIRECTIVE (2002/95/EC)

<b>ENTER DESCRIPTION</b> IEC NO: USY2008-0491 DRAWN: JERWIN 2008/07/10 CHKD: ARINKE 2008/07/10 APPR: K.JANOTA 2008/07/22 REV: A	<b>QUALITY SYMBOLS</b> ▼=0 ▽=0	<b>GENERAL TOLERANCES (UNLESS SPECIFIED)</b>		<b>DIMENSION STYLE</b> MM ONLY	SCALE 4:1	DESIGN UNITS METRIC	THIRD ANGLE PROJECTION		
		4 PLACES ±--- ±---	3 PLACES ±--- ±---	2 PLACES ±0.15 ±---	1 PLACE ±0.25 ±---	DRAWN BY JERWIN	DATE 2008/06/30	TITLE SFP+ 1X1 LIGHT PIPE ASSEMBLY, LOW PROFILE	
		ANGULAR ± 1°				CHECKED BY ARINKE	DATE 2008/06/30	MOLEX INCORPORATED	
		DRAFT WHERE APPLICABLE MUST REMAIN WITHIN DIMENSIONS				APPROVED BY K.JANOTA	DATE 2008/06/30	MATERIAL NO. 747540011	DOCUMENT NO. SD-74754-0011



HOST PCB LAYOUT NOTES (SCALE 10:1)

1. LED SHOULD BE PLACED RELATIVE TO THE SFP CONNECTOR POST HOLES
2. LAYOUT APPLIES TO EACH PORT

<b>ENTER DESCRIPTION</b> IEC NO. USY2008-0491 DRAWN: JERWIN 2008/07/10 CHECKED: ARI NKE 2008/07/10 APPROVED: KJANOTA 2008/07/22	<b>QUALITY SYMBOLS</b>   	<b>GENERAL TOLERANCES (UNLESS SPECIFIED)</b>		<b>DIMENSION STYLE</b> MM ONLY	<b>SCALE</b> 4:1	<b>DESIGN UNITS</b> METRIC	THIRD ANGLE PROJECTION		
		4 PLACES ± 0.15 ± 0.05 3 PLACES ± 0.15 ± 0.05 2 PLACES ± 0.15 ± 0.05 1 PLACE ± 0.25 ± 0.10	mm INCH	DRAWN BY JERWIN 2008/06/30	DATE 2008/06/30	<b>TITLE</b> SFP+ 1X1 LIGHT PIPE ASSEMBLY, LOW PROFILE			
		ANGULAR ± 1°	APPROVED BY KJANOTA 2008/06/30	DATE 2008/06/30	<b>MOLEX INCORPORATED</b>				
		DRAFT WHERE APPLICABLE MUST REMAIN WITHIN DIMENSIONS	<b>MATERIAL NO.</b> 747540011	<b>DOCUMENT NO.</b> SD-74754-0011	<b>SHEET NO.</b> 2 OF 2	THIS DRAWING CONTAINS INFORMATION THAT IS PROPRIETARY TO MOLEX INCORPORATED AND SHOULD NOT BE USED WITHOUT WRITTEN PERMISSION			