



Chipsmall Limited consists of a professional team with an average of over 10 year of expertise in the distribution of electronic components. Based in Hongkong, we have already established firm and mutual-benefit business relationships with customers from,Europe,America and south Asia,supplying obsolete and hard-to-find components to meet their specific needs.

With the principle of “Quality Parts,Customers Priority,Honest Operation,and Considerate Service”,our business mainly focus on the distribution of electronic components. Line cards we deal with include Microchip,ALPS,ROHM,Xilinx,Pulse,ON,Everlight and Freescale. Main products comprise IC,Modules,Potentiometer,IC Socket,Relay,Connector.Our parts cover such applications as commercial,industrial, and automotives areas.

We are looking forward to setting up business relationship with you and hope to provide you with the best service and solution. Let us make a better world for our industry!



Contact us

Tel: +86-755-8981 8866 Fax: +86-755-8427 6832

Email & Skype: info@chipsmall.com Web: www.chipsmall.com

Address: A1208, Overseas Decoration Building, #122 Zhenhua RD., Futian, Shenzhen, China



ITEM NUMBER	CONTACT PLATING	DIMENSION "A" ± 0.10 ± 0.25	HEXAGONAL SCREWLOCKS PACKAGED WITH CONNECTORS	SCREWLOCK ITEM NUMBER (SEE SD-70982-****)	PACKAGED PER PACKAGING SPECIFICATION
75134-1000	GOLD FLASH	.092 / 2.34	NO		PK-70873-0291
75134-1001	GOLD FLASH	.092 / 2.34	YES	70982-1003; 4-40 INTERNAL THD	PK-70873-0686
75134-2000	30 GOLD	.092 / 2.34	NO		PK-70873-0291
75134-2001	30 GOLD	.092 / 2.34	YES	70982-1003; 4-40 INTERNAL THD	PK-70873-0686

NOTES:

1) MATERIALS:

HOUSING: GLASS FILLED LCP (LIQUID CRYSTAL POLYMER), UL94 V-0, COLOR NATURAL.
 STICK HOUSING: GLASS FILLED LCP (LIQUID CRYSTAL POLYMER), UL94 V-0, COLOR BLACK.
 TERMINALS: COPPER ALLOY.
 OUTER SHELL: DEEP DRAWN STEEL.
 HEXAGONAL SCREWLOCK: STEEL.

2) PLATING :

TERMINAL: GOLD FLASH: SELECTIVE GOLD (Au) FLASH IN CONTACT AREA: THICKNESS= 2 TO 10 MICROINCHES/0.05 TO 0.25 MICROMETERS, SELECTIVE TIN (Sn) ALLOY IN THE PC TAIL AREA: THICKNESS= 100 MICROINCHES/2.54 MICROMETERS MINIMUM, NICKEL (Ni) UNDERPLATE OVER ENTIRE PIN.

30 GOLD: SELECTIVE GOLD (Au) IN CONTACT AREA: THICKNESS= 30 MICROINCHES/0.76 MICROMETERS MINIMUM, SELECTIVE TIN (Sn) ALLOY IN THE PC TAIL AREA: THICKNESS= 100 MICROINCHES/2.54 MICROMETERS MINIMUM, NICKEL (Ni) UNDERPLATE OVER ENTIRE PIN.

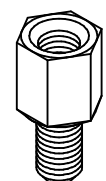
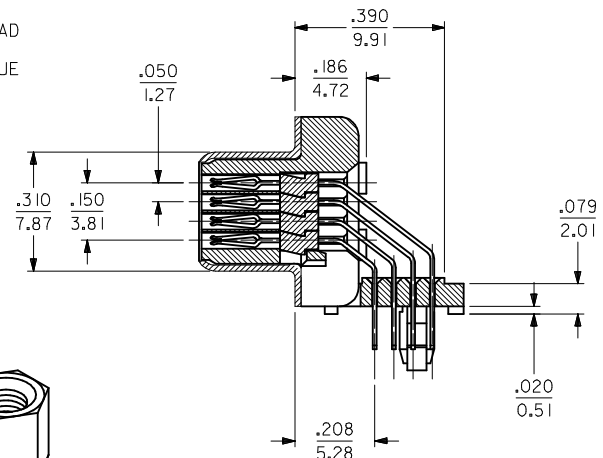
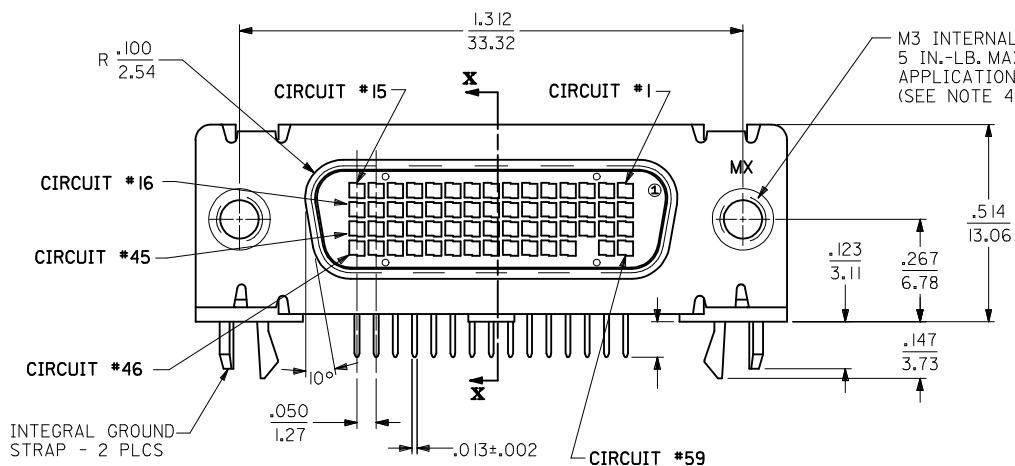
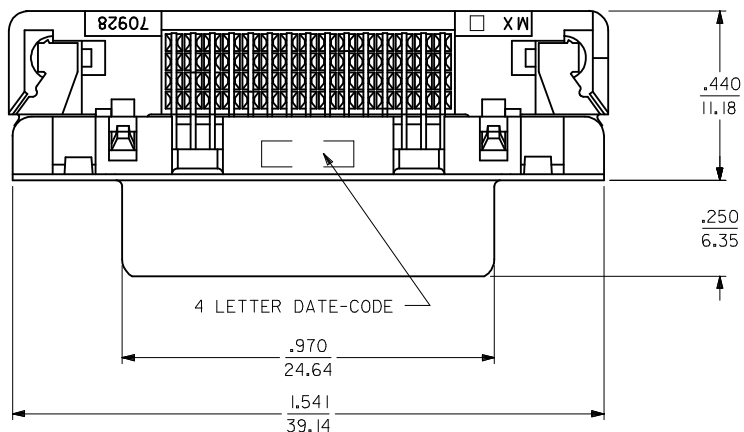
OUTER SHELL: 150 MICROINCHES/3.81 MICROMETERS MINIMUM OF BRIGHT TIN OVER 50 MICROINCHES/1.27 MICROMETERS MINIMUM OF NICKEL OVER COPPER FLASH (OPTIONAL).

3) CONFORMS TO PRODUCT SPECIFICATION PS-75134-001.

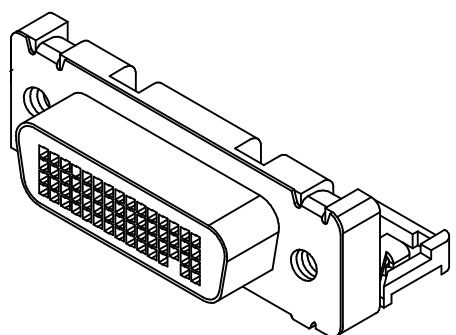
4) THREAD GAGE MAY REQUIRE UP TO 1 INCH-POUND/0.113 NEWTON-METER OF TORQUE DURING GAGING PROCESS.

5) SEE TABLE FOR PACKAGING.

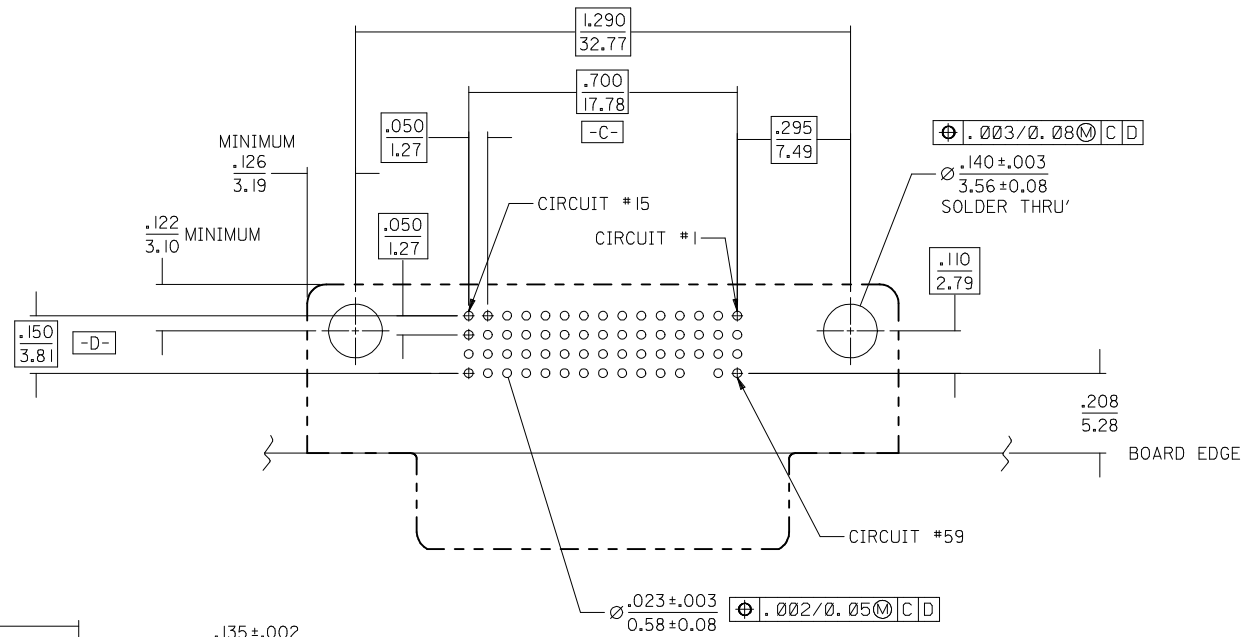
6) PART COMPLIES WITH CLASS B OF COSMETIC SPECIFICATION PS-45499-002



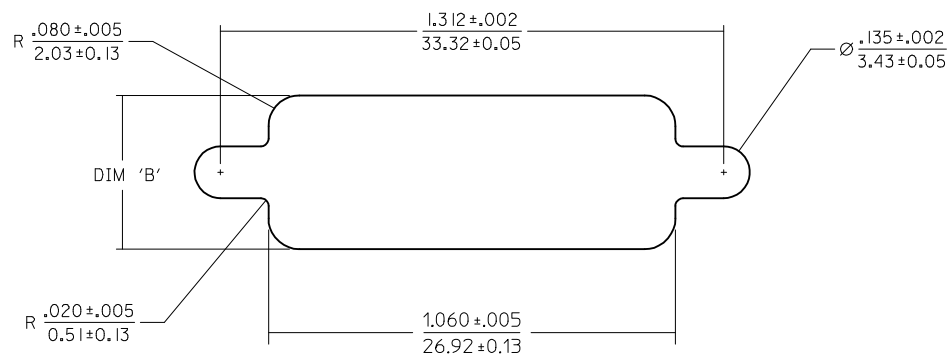
OPTIONAL HEXAGONAL SCREWLOCK



ADD 30 GOLD OPTS EC NO: UCP2014-4242 IDRW:DMORGAN 2014/04/11 CHKD:MPOFF 2014/04/14 APPR:SMILLER 2014/04/18	QUALITY SYMBOLS ▽=0 ▽=0 ▽=0	GENERAL TOLERANCES (UNLESS SPECIFIED)		DIMENSION STYLE IN/MM		SCALE 4:1	DESIGN UNITS INCH	THIRD ANGLE PROJECTION	
		mm	INCH	DRAWN BY DMORGAN	DATE 2002/10/18	TITLE SALES DMS-59 RECEPTACLE LFH .050/1.27 PITCH RIGHT ANGLE I/O 59 CKT	DOCUMENT NO. SD-75134-001		SHEET NO. 1 OF 2
DRAFT WHERE APPLICABLE MUST REMAIN WITHIN DIMENSIONS		ANGULAR ±1/2°		SEE TABLE		THIS DRAWING CONTAINS INFORMATION THAT IS PROPRIETARY TO MOLEX INCORPORATED AND SHOULD NOT BE USED WITHOUT WRITTEN PERMISSION			



COMPONENT SIDE
RECOMMENDED P.C.B. LAYOUT



RECOMMENDED PANEL CUT-OUT

DIMENSION 'B'	MAXIMUM PANEL THICKNESS
.400 ±.005 / 10.16 ±0.13	.039 / 0.99
.420 ±.005 / 10.67 ±0.13	.064 / 1.63

SEE SHEET 1 EC NO: UCP2014-4242 DRAWN BY: DMORGAN 2014/04/11 CHECKED BY: CHKD:MPOFF 2014/04/14 APPR: SMILLER 2014/04/18	QUALITY SYMBOLS	GENERAL TOLERANCES (UNLESS SPECIFIED)	DIMENSION STYLE IN/MM	SCALE 4:1	DESIGN UNITS INCH	THIRD ANGLE PROJECTION
	▽=0	mm INCH	DRAWN BY DATE			
	▽=0	4 PLACES ± --- ± ---	DMORGAN 2002/10/18	TITLE		
	▽=0	3 PLACES ± --- ± .010	CHECKED BY DATE	SALES DMS-59 RECEPTACLE		
		2 PLACES ± 0.25 ± .015	BBARKER 2002/10/18	LFH .050/1.27 PITCH		
	1 PLACE ± 0.38 ± ---	APPROVED BY DATE	RIGHT ANGLE I/O 59 CKT			
	0 PLACE ± --- ± ---	SMILLER 2002/10/18	molex			
	ANGULAR ±1/2°	MATERIAL NO.	DOCUMENT NO.			
	DRAFT WHERE APPLICABLE MUST REMAIN WITHIN DIMENSIONS	SEE TABLE	SD-75134-001			
		SIZE C	THIS DRAWING CONTAINS INFORMATION THAT IS PROPRIETARY TO MOLEX INCORPORATED AND SHOULD NOT BE USED WITHOUT WRITTEN PERMISSION		SHEET NO. 2 OF 2	