



Chipsmall Limited consists of a professional team with an average of over 10 year of expertise in the distribution of electronic components. Based in Hongkong, we have already established firm and mutual-benefit business relationships with customers from,Europe,America and south Asia,supplying obsolete and hard-to-find components to meet their specific needs.

With the principle of “Quality Parts,Customers Priority,Honest Operation,and Considerate Service”,our business mainly focus on the distribution of electronic components. Line cards we deal with include Microchip,ALPS,ROHM,Xilinx,Pulse,ON,Everlight and Freescale. Main products comprise IC,Modules,Potentiometer,IC Socket,Relay,Connector.Our parts cover such applications as commercial,industrial, and automotives areas.

We are looking forward to setting up business relationship with you and hope to provide you with the best service and solution. Let us make a better world for our industry!



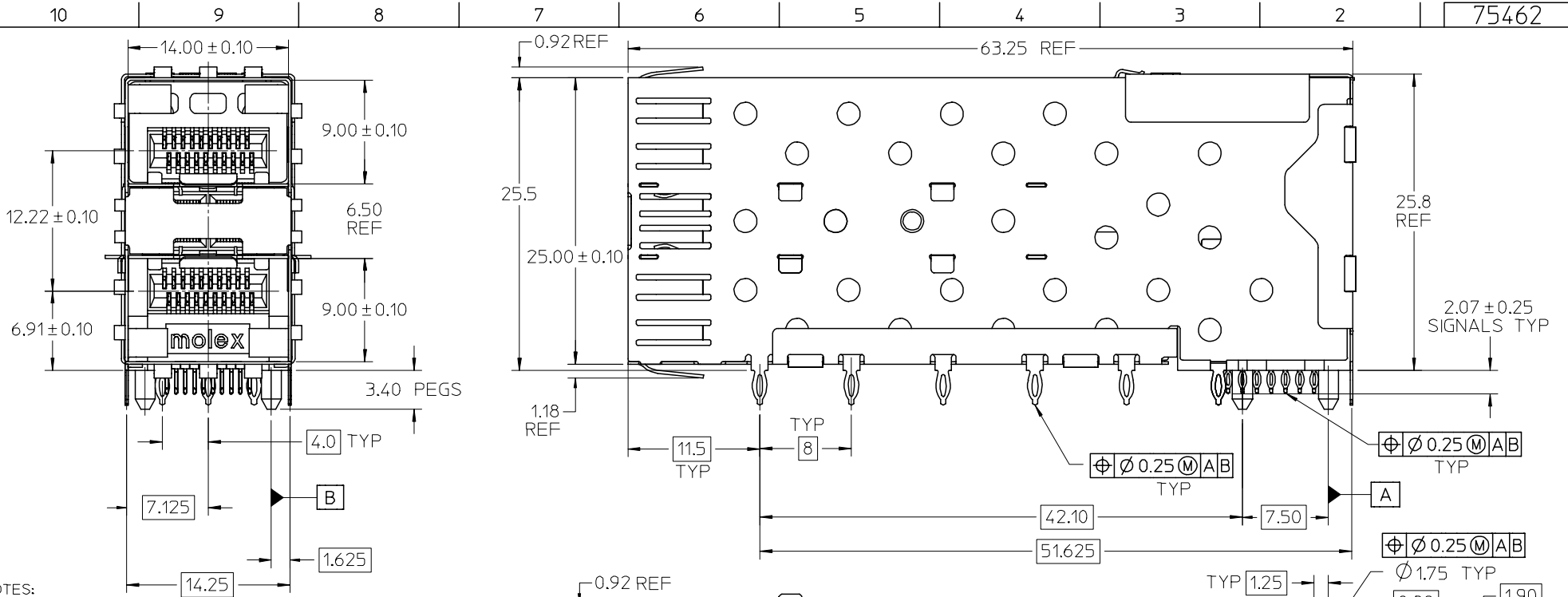
Contact us

Tel: +86-755-8981 8866 Fax: +86-755-8427 6832

Email & Skype: info@chipsmall.com Web: www.chipsmall.com

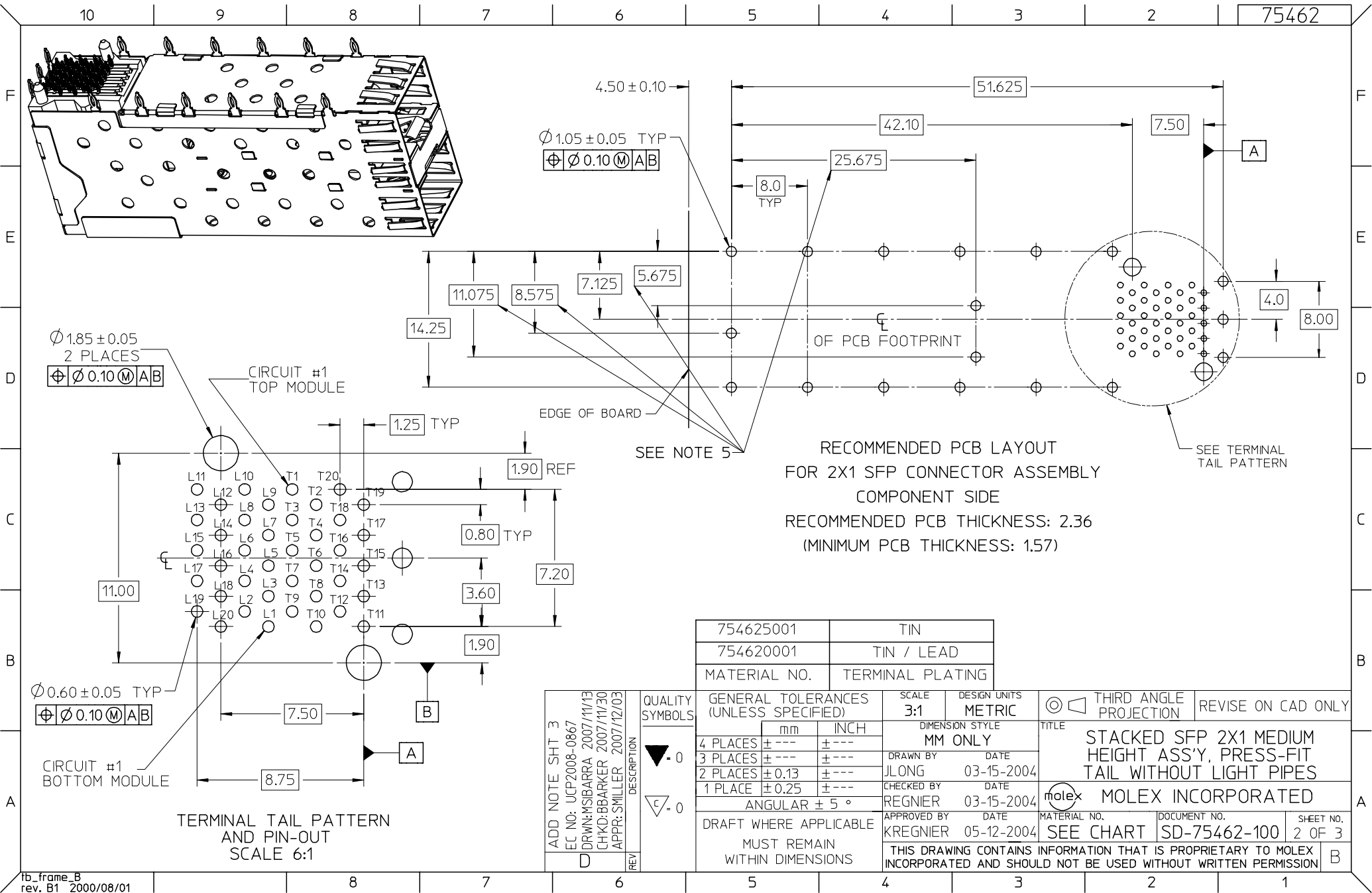
Address: A1208, Overseas Decoration Building, #122 Zhenhua RD., Futian, Shenzhen, China





- NOTES:
- MATERIAL:
 - CAGE: NICKEL SILVER, THICKNESS: 0.25MM
 - SFP HOUSING: GLASS FILLED HIGH TEMP PLASTIC, UL: 94 V-0, COLOR: BLACK
 - OVER-MOLDED TERMINALS: GLASS FILLED HIGH TEMP PLASTIC, UL: 94 V-0, COLOR: BLACK
 - TERMINALS: BRASS
 - FINISH:
 - TERMINALS: CONTACT AREA: 0.76 MICRONS MIN. HARD GOLD OVER 1.27 MICRONS MIN. NICKEL.
 - COMPLIANT TAIL - TIN/LEAD OPTION: 0.76 - 1.52 MICRONS 90/10 TIN/LEAD OVER 0.76 - 1.52 MICRONS NICKEL.
 - COMPLIANT TAIL - TIN OPTION: 0.76 - 1.52 MICRONS TIN OVER 0.76 - 1.52 MICRONS NICKEL.
 - REFER TO PS-75310-001 FOR ALL ELECTRICAL, MECHANICAL AND ENVIRONMENTAL SPECIFICATIONS.
 - REFER TO PK-75462-001 FOR ALL PACKAGING SPECIFICATIONS.
 - THE CURVED TAILS THAT GO INTO THE HOLES LOCATED BY THESE DIMENSIONS ARE BEING ELIMINATED. TO ACCOMMODATE THIS CONVERSION, IT IS RECOMMENDED THAT BOARDS DESIGNED TO THIS PRINT REVISION INCLUDE THESE HOLES.

| | | | | | | | | | |
|--|-----------------------------------|---------------------------------------|-------------------------------|------------|---|------------------------|---|--------------|-----------|
| ADD NOTE SHT 3 EC NO: UCP2008-0867 DRWN: MSIBARRA 2007/11/13 CHKD: BBARKER 2007/11/30 APPR: SWILLER 2007/12/03 | QUALITY SYMBOLS ▽ - 0 ▽ - 0 | GENERAL TOLERANCES (UNLESS SPECIFIED) | | SCALE 3:1 | DESIGN UNITS METRIC | THIRD ANGLE PROJECTION | REVISE ON CAD ONLY | | |
| | | | mm | INCH | DIMENSION STYLE MM ONLY | | TITLE | | |
| | | 4 PLACES | ± --- | ± --- | DRAWN BY | DATE | STACKED SFP 2X1 MEDIUM HEIGHT ASS'Y, PRESS-FIT TAIL WITHOUT LIGHT PIPES | | |
| | | 3 PLACES | ± --- | ± --- | JLONG | 03-15-2004 | | | |
| 2 PLACES | ± 0.13 | ± --- | CHECKED BY | DATE | MOLEX INCORPORATED | | | | |
| 1 PLACE | ± 0.25 | ± --- | REGNIER | 03-15-2004 | | | | | |
| | | | ANGULAR ± 5 ° | | APPROVED BY | DATE | MATERIAL NO. | DOCUMENT NO. | SHEET NO. |
| | | | DRAFT WHERE APPLICABLE | | KREGNIER | 05-12-2004 | SEE CHART | SD-75462-100 | 1 OF 3 |
| | | | MUST REMAIN WITHIN DIMENSIONS | | THIS DRAWING CONTAINS INFORMATION THAT IS PROPRIETARY TO MOLEX INCORPORATED AND SHOULD NOT BE USED WITHOUT WRITTEN PERMISSION | | | | |



$\varnothing 1.05 \pm 0.05$ TYP
 $\varnothing \varnothing 0.10$ (M) (A) (B)

$\varnothing 1.85 \pm 0.05$
 2 PLACES
 $\varnothing \varnothing 0.10$ (M) (A) (B)

$\varnothing 0.60 \pm 0.05$ TYP
 $\varnothing \varnothing 0.10$ (M) (A) (B)

RECOMMENDED PCB LAYOUT
 FOR 2X1 SFP CONNECTOR ASSEMBLY
 COMPONENT SIDE
 RECOMMENDED PCB THICKNESS: 2.36
 (MINIMUM PCB THICKNESS: 1.57)

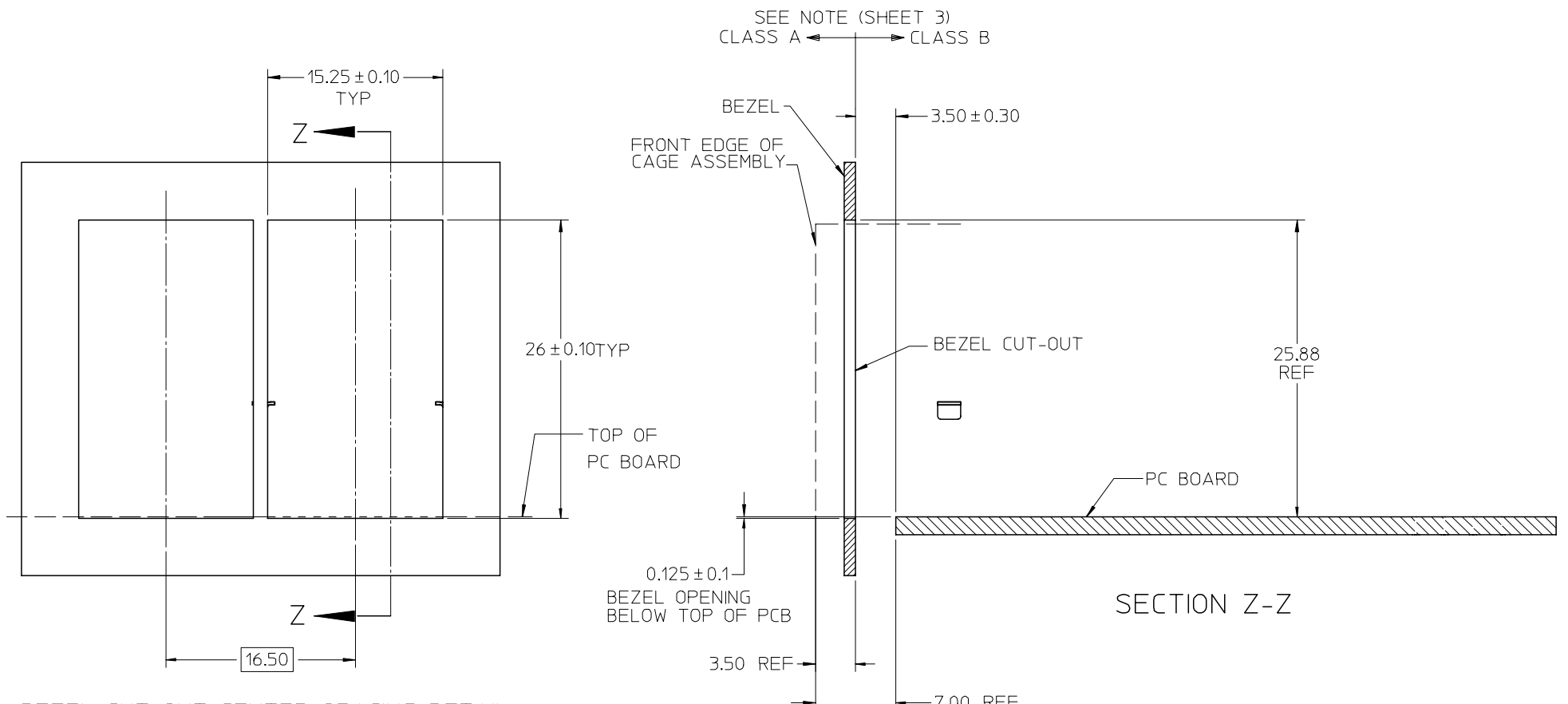
TERMINAL TAIL PATTERN
 AND PIN-OUT
 SCALE 6:1

| | |
|--------------|------------------|
| 754625001 | TIN |
| 754620001 | TIN / LEAD |
| MATERIAL NO. | TERMINAL PLATING |

| | |
|--|-----------------|
| ADD NOTE SHT 3 EC NO: UCP2008-0867 DRWN: MSIBARRA 2007/11/13 CHKD: BBARKER 2007/11/30 APPR: SWILLER 2007/12/03 | QUALITY SYMBOLS |
| | ▽ - 0 ▽ - 0 |
| | DESCRIPTION |
| | REV |

| | | | | | |
|---------------------------------------|--------|------------------------|-------------------------|---------------------------|--------------------|
| GENERAL TOLERANCES (UNLESS SPECIFIED) | | SCALE 3:1 | DESIGN UNITS METRIC | THIRD ANGLE PROJECTION | REVISE ON CAD ONLY |
| 4 PLACES | ± --- | mm | DIMENSION STYLE MM ONLY | TITLE | |
| 3 PLACES | ± --- | INCH | DRAWN BY JLONG | DATE 03-15-2004 | |
| 2 PLACES | ± 0.13 | | CHECKED BY REGNIER | DATE 03-15-2004 | |
| 1 PLACE | ± 0.25 | | APPROVED BY KREGNIER | DATE 05-12-2004 | |
| ANGULAR ± 5 ° | | DRAFT WHERE APPLICABLE | | MATERIAL NO. SEE CHART | |
| MUST REMAIN WITHIN DIMENSIONS | | | | DOCUMENT NO. SD-75462-100 | |
| | | | | SHEET NO. 2 OF 3 | |

| | |
|---|--|
| MOLEX INCORPORATED | |
| THIS DRAWING CONTAINS INFORMATION THAT IS PROPRIETARY TO MOLEX INCORPORATED AND SHOULD NOT BE USED WITHOUT WRITTEN PERMISSION | |



BEZEL CUT-OUT CENTER SPACING DETAIL
BEZEL THICKNESS 0.8 - 2.6

NOTE:
PART COMPLIES WITH COSMETIC SPECIFICATION PS-45499-002.
SEE SECTION Z-Z FOR SURFACE CLASSIFICATIONS.
UNDERSIDE OF CAGE COMPLIES WITH CLASS 'C'.

| | | | | | | | | |
|--|-----------------------------------|---------------------------------------|-------|---|----------------------------|---------------------------|---|--|
| ADD NOTE EC NO: UCP2008-0867 DRWN: MSIBARRA 2007/11/13 CHKD: BBARKER 2007/11/30 APPR: SMILLER 2007/12/03 | QUALITY SYMBOLS ▽ = 0 ▽ = 0 | GENERAL TOLERANCES (UNLESS SPECIFIED) | | SCALE 3:1 | DESIGN UNITS METRIC | THIRD ANGLE PROJECTION | REVISE ON CAD ONLY | |
| | | | mm | INCH | DIMENSION STYLE MM ONLY | | TITLE | |
| | | 4 PLACES | ± --- | ± --- | DRAWN BY JLONG | DATE 03-15-2004 | STACKED SFP 2X1 MEDIUM HEIGHT ASS'Y, PRESS-FIT TAIL WITHOUT LIGHT PIPES | |
| | | 3 PLACES | ± --- | ± --- | CHECKED BY REGNIER | DATE 03-15-2004 | MOLEX INCORPORATED | |
| | 2 PLACES | ± 0.13 | ± --- | APPROVED BY KREGNIER | DATE 05-12-2004 | MATERIAL NO. SEE CHART | DOCUMENT NO. SD-75462-100 | |
| | 1 PLACE | ± 0.25 | ± --- | DRAFT WHERE APPLICABLE MUST REMAIN WITHIN DIMENSIONS | | SHEET NO. 3 OF 3 | | |
| | | ANGULAR ± 5 ° | | THIS DRAWING CONTAINS INFORMATION THAT IS PROPRIETARY TO MOLEX INCORPORATED AND SHOULD NOT BE USED WITHOUT WRITTEN PERMISSION | | | | |