



Chipsmall Limited consists of a professional team with an average of over 10 year of expertise in the distribution of electronic components. Based in Hongkong, we have already established firm and mutual-benefit business relationships with customers from,Europe,America and south Asia,supplying obsolete and hard-to-find components to meet their specific needs.

With the principle of "Quality Parts,Customers Priority,Honest Operation,and Considerate Service",our business mainly focus on the distribution of electronic components. Line cards we deal with include Microchip,ALPS,ROHM,Xilinx,Pulse,ON,Everlight and Freescale. Main products comprise IC,Modules,Potentiometer,IC Socket,Relay,Connector.Our parts cover such applications as commercial,industrial, and automotives areas.

We are looking forward to setting up business relationship with you and hope to provide you with the best service and solution. Let us make a better world for our industry!



Contact us

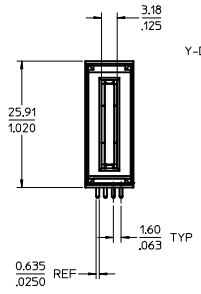
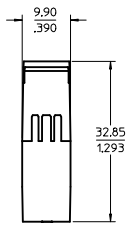
Tel: +86-755-8981 8866 Fax: +86-755-8427 6832

Email & Skype: info@chipsmall.com Web: www.chipsmall.com

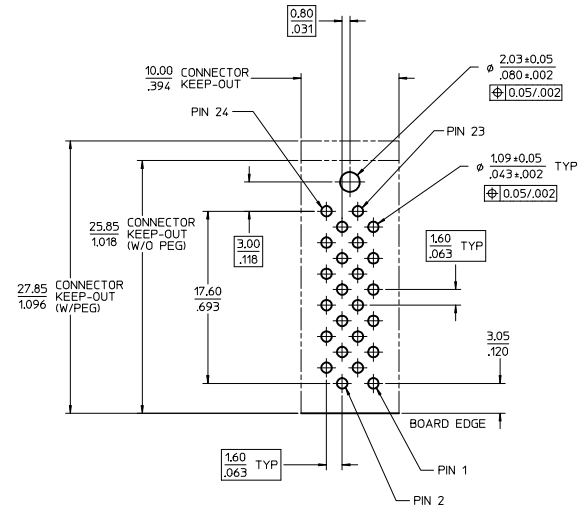
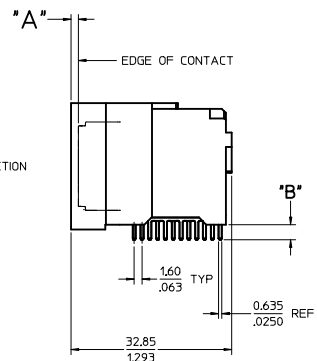
Address: A1208, Overseas Decoration Building, #122 Zhenhua RD., Futian, Shenzhen, China



PART NUMBER	DIM 'A'	DIM 'B'	BLADE TYPE	PCB THICKNESS	PLATING	PEGS
75556-5000	0.00/.000	3.06/.120	LONG	2.39/.094	30μ INCH MIN SELECT HARD GOLD IN CONTACT AREA WITH 100μ INCH MIN SELECT TIN IN TAIL AREA OVER 50μ INCH MIN NICKEL OVERALL.	W/O PEGS
75556-5001	0.00/.000	3.81/.150	LONG	3.18/.125		
75556-5100	1.50/.059	3.06/.120	SHORT	2.39/.094		
75556-5101	1.50/.059	3.81/.150	SHORT	3.18/.125		
75556-1500	0.00/.000	3.06/.120	LONG	2.39/.094	30μ INCH MIN SELECT HARD GOLD IN CONTACT AREA WITH 100μ INCH MIN SELECT TIN IN TAIL AREA OVER 50μ INCH MIN NICKEL OVERALL.	W/PEGS
75556-1501	0.00/.000	3.81/.150	LONG	3.18/.125		
75556-1510	1.50/.059	3.06/.120	SHORT	2.39/.094		
75556-1511	1.50/.059	3.81/.150	SHORT	3.18/.125		

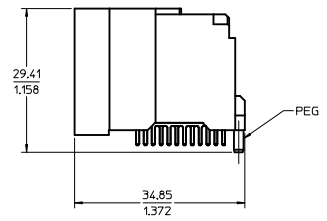


75556-5*** SHOWN (W/O PEG)



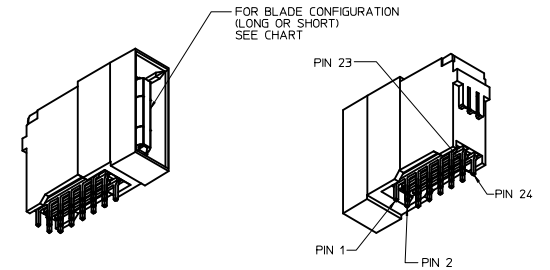
PCB LAYOUT SCALE: 4:1

RECOMMENDED MIN PCB THICKNESS : SEE TABLE

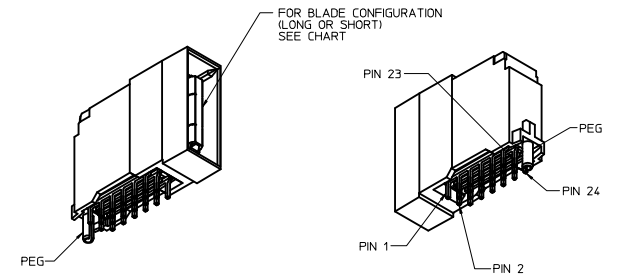


75556-15** SHOWN (W/PEG)

- NOTES:
- MATERIALS:
- HOUSING: 30% GLASS FILLED, LCP 94V-0, COLOR BLACK
- TERMINALS: COPPER ALLOY
- PLATING: PER ES-88 - SEE CHART
 - SEE CHART FOR REFERENCE DOCUMENTS
 - PLUG MATES WITH RECEPTACLE ASSEMBLIES: 75542-5000 & 75542-5001
 - MODULE IS DESIGNED FOR SOLDERING TO THE PCB
 - MODULE ASSEMBLY IS RoHS COMPLIANT
 - GATHERABILITY: ±0.65/.026 X-DIRECTION
±1.30/.051 Y-DIRECTION



75556-5100 SHOWN (W/O PEG)



75556-1500 SHOWN (W/PEG)

REFERENCE DOCUMENTS	
PS-75431-999	PRODUCT SPECIFICATION: PERFORMANCE AND RATINGS
SD-75555-***	FINAL ASSEMBLY CONFIGURATION DRAWING

REV	DESCRIPTION	QUALITY SYMBOLS		GENERAL TOLERANCES (UNLESS SPECIFIED)		DIMENSION STYLE		SCALE	DESIGN UNITS	THIRD ANGLE PROJECTION
		mm	INCH	mm	INCH	MM/IN	2:1	METRIC	☉	
1	REVISED CHART	4 PLACES	±---	±---	±---	DRAWN BY	DATE	TITLE	EXTREME POWERMASS 150 AMP MODULE, PLUG	
2	LEC NO: SZ017-0197	3 PLACES	±---	±.008	±---	CHECKED BY	DATE		MOLEX INCORPORATED	
3	DRAWN BY: CHYKONG	2 PLACES	±0.20	±.013	±---	APPROVED BY	DATE		SD-75556-100	
4	2016/10/10	1 PLACE	±0.33	±---	±---	MATERIAL NO.	DATE		1 OF 1	
5	2016/11/14	ANGULAR ±1/2°		DRAFT WHERE APPLICABLE MUST REMAIN WITHIN DIMENSIONS		SIZE	DATE		THIS DRAWING CONTAINS INFORMATION THAT IS PROPRIETARY TO MOLEX INCORPORATED AND SHOULD NOT BE USED WITHOUT WRITTEN PERMISSION	