



Chipsmall Limited consists of a professional team with an average of over 10 year of expertise in the distribution of electronic components. Based in Hongkong, we have already established firm and mutual-benefit business relationships with customers from,Europe,America and south Asia,supplying obsolete and hard-to-find components to meet their specific needs.

With the principle of “Quality Parts,Customers Priority,Honest Operation,and Considerate Service”,our business mainly focus on the distribution of electronic components. Line cards we deal with include Microchip,ALPS,ROHM,Xilinx,Pulse,ON,Everlight and Freescale. Main products comprise IC,Modules,Potentiometer,IC Socket,Relay,Connector.Our parts cover such applications as commercial,industrial, and automotives areas.

We are looking forward to setting up business relationship with you and hope to provide you with the best service and solution. Let us make a better world for our industry!



Contact us

Tel: +86-755-8981 8866 Fax: +86-755-8427 6832

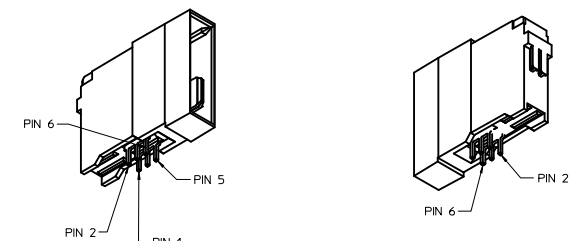
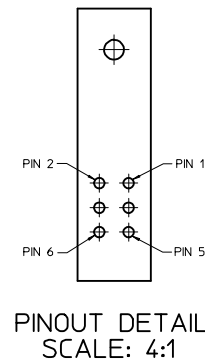
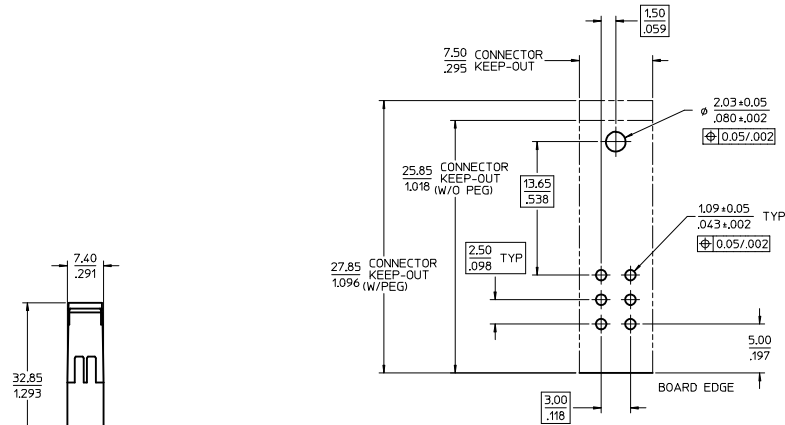
Email & Skype: info@chipsmall.com Web: www.chipsmall.com

Address: A1208, Overseas Decoration Building, #122 Zhenhua RD., Futian, Shenzhen, China



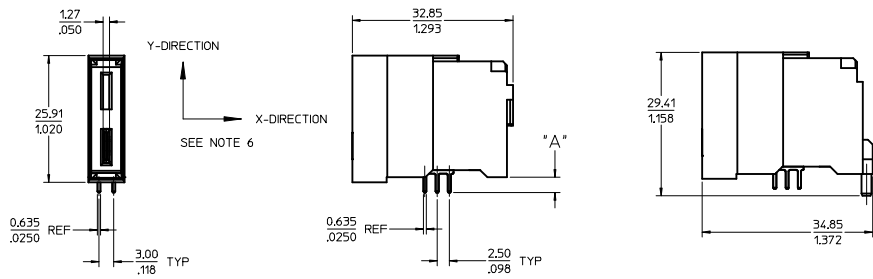
PART NUMBER	DESCRIPTION	DIM "A" PC TAIL LENGTH	PLATING
75561-5100	SHORT PC TAIL - NO PEG	3.077,121	30µ INCH MIN SELECT HARD GOLD IN CONTACT AREA WITH 100µ INCH MIN SELECT TIN IN TAIL AREA OVER 50µ INCH MIN NICKEL OVERALL
75561-5101	LONG PC TAIL - NO PEG	3.811,150	
75561-1510	SHORT PC TAIL - PEG	3.077,121	30µ INCH MIN SELECT HARD GOLD IN CONTACT AREA WITH 100µ INCH MIN SELECT TIN IN TAIL AREA OVER 50µ INCH MIN NICKEL OVERALL
75561-1511	LONG PC TAIL - PEG	3.811,150	

- NOTES:
1. MATERIALS:
- HOUSING: 30% GLASS FILLED, LCP 94V-0, COLOR: BLACK
- TERMINALS: COPPER ALLOY
PLATING: PER ES-88 - SEE CHART
 2. SEE CHART FOR REFERENCE DOCUMENTS
 3. PLUG MATES WITH RECEPTACLE ASSEMBLIES: 75545-5100 & 75545-5101
 4. MODULE IS DESIGNED FOR SOLDERING TO THE PCB
 5. MODULE ASSEMBLY IS RoHS COMPLIANT
 6. GATHERABILITY: +0.65/.026 X-DIRECTION
+1.30/.051 Y-DIRECTION

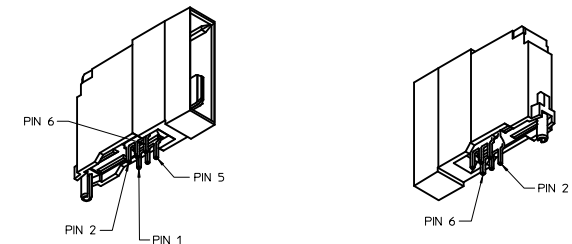


PCB LAYOUT
SCALE: 4:1

75561-5100 SHOWN
(W/O PEG)



SAME AS 75561-5***
EXCEPT AS SHOWN



75561-1510 SHOWN
(W/PEG)

75561-5*** SHOWN
(W/O PEG)

REFERENCE DOCUMENTS

PS-75431-999	PRODUCT SPECIFICATION: PERFORMANCE AND RATINGS
SD-75555-***	FINAL ASSEMBLY CONFIGURATION DRAWING

QUALITY SYMBOLS	GENERAL TOLERANCES (UNLESS SPECIFIED)		DIMENSION STYLE	SCALE	DESIGN UNITS	THIRD ANGLE PROJECTION
	mm	INCH	MM/IN	2:1	METRIC	
▽=0	4 PLACES ±---	±---	DRAWN BY	DATE	TITLE	
▽=0	3 PLACES ±---	±.008	ADRNATNOL	2005/04/19	POWERMASS 40 AMP MODULE, PLUG LOWER	
▽=0	2 PLACES ±0.20	±.013	CHECKED BY	DATE	MOLEX INCORPORATED	
	1 PLACE ±0.33	±---	MDATA	2005/04/19	MOLEX INCORPORATED	
	ANGULAR ±1/2°		APPROVED BY	DATE	DOCUMENT NO.	
	DRAFT WHERE APPLICABLE MUST REMAIN WITHIN DIMENSIONS		APATEL	2005/04/19	SD-75561-101	
	SIZE		MATERIAL NO.	SEE CHART	SHEET NO.	
	D		THIS DRAWING CONTAINS INFORMATION THAT IS PROPRIETARY TO MOLEX INCORPORATED AND SHOULD NOT BE USED WITHOUT WRITTEN PERMISSION		1 OF 1	