



Chipsmall Limited consists of a professional team with an average of over 10 year of expertise in the distribution of electronic components. Based in Hongkong, we have already established firm and mutual-benefit business relationships with customers from,Europe,America and south Asia,supplying obsolete and hard-to-find components to meet their specific needs.

With the principle of “Quality Parts,Customers Priority,Honest Operation,and Considerate Service”,our business mainly focus on the distribution of electronic components. Line cards we deal with include Microchip,ALPS,ROHM,Xilinx,Pulse,ON,Everlight and Freescale. Main products comprise IC,Modules,Potentiometer,IC Socket,Relay,Connector.Our parts cover such applications as commercial,industrial, and automotives areas.

We are looking forward to setting up business relationship with you and hope to provide you with the best service and solution. Let us make a better world for our industry!



Contact us

Tel: +86-755-8981 8866 Fax: +86-755-8427 6832

Email & Skype: info@chipsmall.com Web: www.chipsmall.com

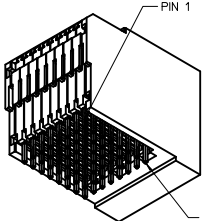
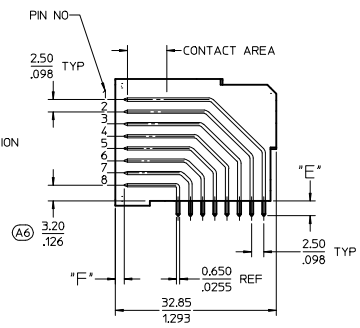
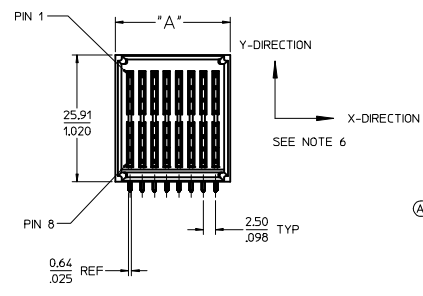
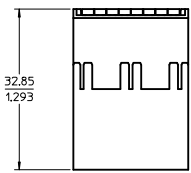
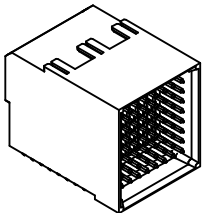
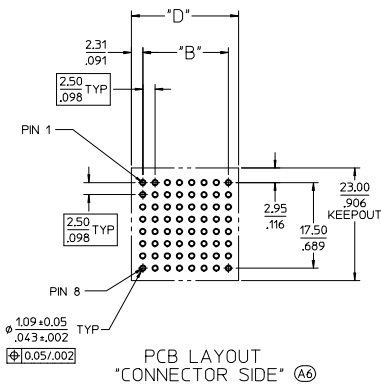
Address: A1208, Overseas Decoration Building, #122 Zhenhua RD., Futian, Shenzhen, China



| PART NUMBER | CIRCUIT SIZE | DIM "A" | DIM "B" | DIM "D" | DIM "E" TAIL | DIM "F" PIN | MATING MODULE | PLATING |
|-------------|--------------|------------|------------|------------|-------------------------|------------------------------------------------------|---------------|---------------------------------------------------------------------------------------------------------------------------------|
| 75568-5000 | 64 | 23.50/.925 | 17.50/.689 | 27.50/1.08 | 3.07±0.10/ .12±0.004 | 2.51/.099 | 75548-6000 | 30µ INCH MIN SELECT HARD GOLD IN CONTACT AREA WITH 100µ INCH MIN SELECT TIN IN TAIL AREA OVER 50µ INCH MIN NICKEL OVERALL |
| 75568-5056 | 56 | 21.00/.827 | 15.00/.591 | 25.00/.984 | | | 75548-6056 | |
| 75568-5048 | 48 | 18.50/.728 | 12.50/.492 | 22.50/.885 | | | 75548-6048 | |
| 75568-5040 | 40 | 16.00/.630 | 10.00/.394 | 20.00/.787 | | | 75548-6040 | |
| 75568-5032 | 32 | 13.50/.531 | 7.50/.295 | 17.50/.689 | | | 75548-6032 | |
| 75568-5024 | 24 | 11.00/.433 | 5.00/.197 | 15.00/.590 | 75548-6024 | | | |
| 75568-5100 | 64 | 23.50/.925 | 17.50/.689 | 27.50/1.08 | 3.07±0.10/ .12±0.004 | 2.80/.110 PIN 8 ----- 1.80/.071 PINS 1-7 | 75548-6000 | |
| 75568-5156 | 56 | 21.00/.827 | 15.00/.591 | 25.00/.984 | | | 75548-6056 | |
| 75568-5148 | 48 | 18.50/.728 | 12.50/.492 | 22.50/.885 | | | 75548-6048 | |
| 75568-5140 | 40 | 16.00/.630 | 10.00/.394 | 20.00/.787 | | | 75548-6040 | |
| 75568-5132 | 32 | 13.50/.531 | 7.50/.295 | 17.50/.689 | | | 75548-6032 | |
| 75568-5124 | 24 | 11.00/.433 | 5.00/.197 | 15.00/.590 | 75548-6024 | | | |
| 75568-5200 | 64 | 23.50/.925 | 17.50/.689 | 27.50/1.08 | 3.84±0.10/ .15±0.004 | 2.51/.099 | 75548-6000 | |
| 75568-5256 | 56 | 21.00/.827 | 15.00/.591 | 25.00/.984 | | | 75548-6056 | |
| 75568-5248 | 48 | 18.50/.728 | 12.50/.492 | 22.50/.885 | | | 75548-6048 | |
| 75568-5240 | 40 | 16.00/.630 | 10.00/.394 | 20.00/.787 | | | 75548-6040 | |
| 75568-5232 | 32 | 13.50/.531 | 7.50/.295 | 17.50/.689 | | | 75548-6032 | |
| 75568-5224 | 24 | 11.00/.433 | 5.00/.197 | 15.00/.590 | 75548-6024 | | | |

NOTES:

- MATERIALS:
- HOUSING: 30% GLASS FILLED LCP 94V-0, COLOR: BLACK
- TERMINALS: COPPER ALLOY
PLATING: PER ES-88 - SEE CHART
LUBRICATION: EB1 IN CONTACT AREA
- SEE CHART FOR REFERENCE DOCUMENTS
- MODULE IS DESIGNED FOR SOLDERING TO THE PCB
- MODULE ASSEMBLY IS RoHS COMPLIANT
- PLUG MATES WITH RECEPTACLE ASSEMBLIES: 75548-6***
- GATHERABILITY: +0.65/.026 X-DIRECTION
+1.30/.051 Y-DIRECTION



75568-1000
64 CIRCUIT
(SHOWN FOR REFERENCE ONLY)

| REFERENCE DOCUMENTS | |
|---------------------|------------------------------------------------|
| PS-75431-999 | PRODUCT SPECIFICATION: PERFORMANCE AND RATINGS |
| SD-75555-*** | MODULE CONFIGURATION DRAWING |

| | | | | | | | |
|-----------------------------------------------------------------------------------------------------------------------------------------------------|---------------------------------------------------------|--------------------------------------------------------------------------------------|-----------------------------------------------------------------------------------------------------------------------|-------------------------------------------------------|--------------|----------------------------|--|
| UPDATE PART NO. IEC NO: UCP2016-2884 DRWNBANDURA 2015/11/25 CHYKBANDURA 2015/11/25 APPR:BPJ/SZCZOR 2015/11/26 REV DESCRIPTION | QUALITY SYMBOLS | GENERAL TOLERANCES (UNLESS SPECIFIED) | DIMENSION STYLE | SCALE | DESIGN UNITS | THIRD ANGLE PROJECTION | |
| | $\nabla=0$ $\nabla=0$ $\nabla=0$ | 4 PLACES ±.008 3 PLACES ±.013 2 PLACES ±0.20 1 PLACE ±0.33 ANGULAR ±1/2° | mm INCH ±.008 ±.013 ±.013 ±.013 ±.013 ±.013 | MM/IN | 2:1 | METRIC | |
| | DRAFT WHERE APPLICABLE MUST REMAIN WITHIN DIMENSIONS | | DRAWN BY DATE ADRTATNOL 2005/04/11 CHECKED BY DATE MDATA 2005/04/11 APPROVED BY DATE APATEL 2005/04/11 | TITLE EXTREME POWERMASS SIGNAL MODULE, PLUG | | | |
| | | MATERIAL NO. SEE CHART | | DOCUMENT NO. MOLEX INCORPORATED | | SHEET NO. 1 OF 1 | |
| THIS DRAWING CONTAINS INFORMATION THAT IS PROPRIETARY TO MOLEX INCORPORATED AND SHOULD NOT BE USED WITHOUT WRITTEN PERMISSION | | | | | | | |