



Chipsmall Limited consists of a professional team with an average of over 10 year of expertise in the distribution of electronic components. Based in Hongkong, we have already established firm and mutual-benefit business relationships with customers from,Europe,America and south Asia,supplying obsolete and hard-to-find components to meet their specific needs.

With the principle of “Quality Parts,Customers Priority,Honest Operation,and Considerate Service”,our business mainly focus on the distribution of electronic components. Line cards we deal with include Microchip,ALPS,ROHM,Xilinx,Pulse,ON,Everlight and Freescale. Main products comprise IC,Modules,Potentiometer,IC Socket,Relay,Connector.Our parts cover such applications as commercial,industrial, and automotives areas.

We are looking forward to setting up business relationship with you and hope to provide you with the best service and solution. Let us make a better world for our industry!



## Contact us

Tel: +86-755-8981 8866 Fax: +86-755-8427 6832

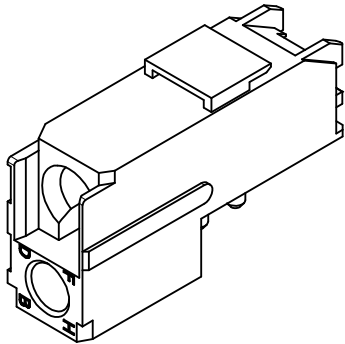
Email & Skype: info@chipsmall.com Web: www.chipsmall.com

Address: A1208, Overseas Decoration Building, #122 Zhenhua RD., Futian, Shenzhen, China

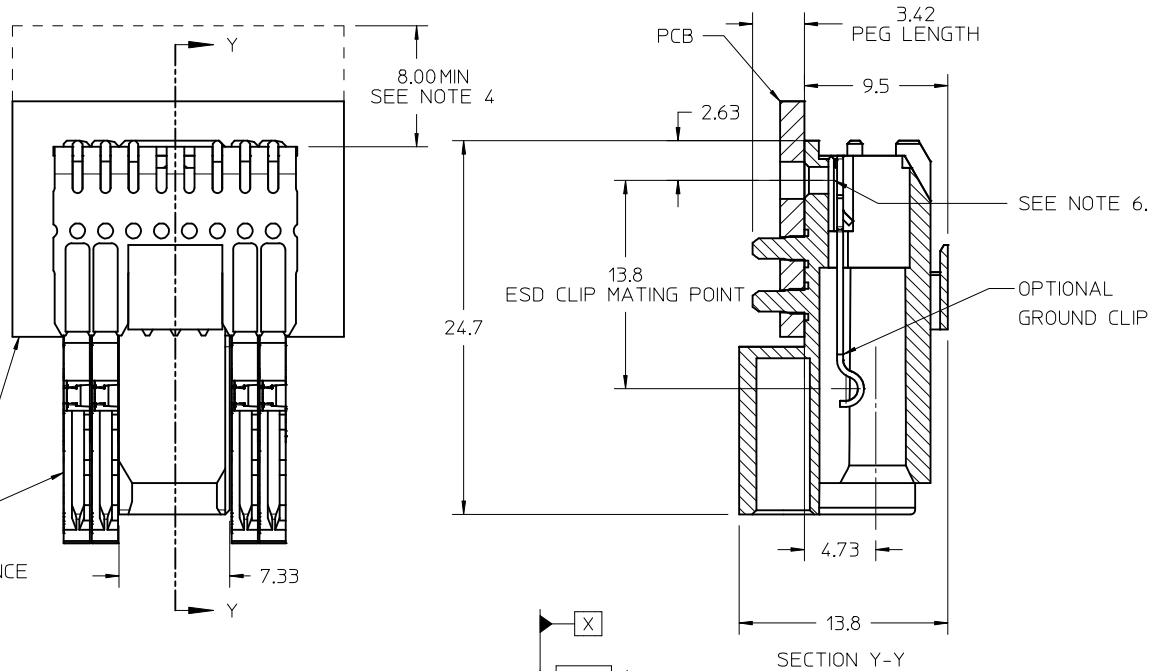


NOTES:

1. MATERIALS: HOUSING - ZINC DIE CAST  
TERMINAL - HIGH PERFORMANCE COPPER ALLOY
2. FINISH: HOUSING - HEX-FREE CHROMATE  
TERMINAL - SELECTIVE GOLD (Au) IN CONTACT AREA.
3. REFER TO MOLEX PRODUCT SPECIFICATION PS-75221-999 FOR PERFORMANCE SPECIFICATIONS.
4. THE SPECIFIED KEEP-OUT ZONE IS REQUIRED FOR CONNECTOR REPAIRABILITY.
5. THE ESD GROUND CLIP AND PLATED THROUGH HOLE REQUIREMENT APPLIES TO THE ESD GROUND MODULE ONLY. THE UNGROUNDED GUIDE MODULES USES A  $\phi 2.58 \pm 0.05$  UNPLATED SCREW HOLE.
6. SCREW TORQUE SPECIFICATION:  $3.0 \pm 1.0$  IN/LBS.
7. OPEN DESIGNATION ALLOWS FOR GUIDE MODULE TO ACCEPT KEY POST IN ANY ORIENTATION. CLOSED DESIGNATION IS SOLID AND BLOCKS ALL KEY POSTS REGARDLESS OF ORIENTATION.
8. NO SURFACE TRACES PERMITTED WITHIN GUIDE OUTLINE.
9. RECOMMENDED CIRCUIT BOARD THICKNESS: 1.5-3.2  
FOR OTHER BOARD THICKNESSES CONSULT FACTORY.
10. RECOMMENDED MOUNTING SCREW: 73774-0010.

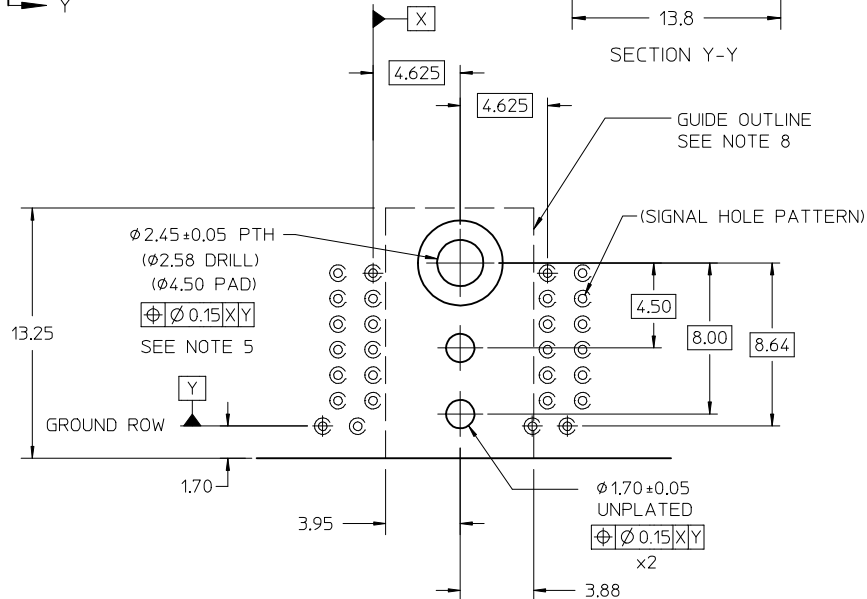


STIFFENER AND  
SIGNAL WAFERS,  
SHOWN FOR REFERENCE



KEY POSITION	GUIDE ASSEMBLY PART NUMBER	GROUND ASSEMBLY PART NUMBER
A	75659-0411	75659-2411
B	75659-0412	75659-2412
C	75659-0413	75659-2413
D	75659-0414	75659-2414
E	75659-0415	75659-2415
F	75659-0416	75659-2416
G	75659-0417	75659-2417
H	75659-0418	75659-2418
*OPEN	75659-0012	75659-2012
*CLOSED	75659-0419	75659-2419

\* SEE NOTE 7



REV TO GBX TWIST EC NO: UCP2014-1038 DRW:RNH/PPLE 2013/08/30 CHKD:MMW/LFE 2013/08/30 APPR:SMILLER 2013/09/24	QUALITY SYMBOLS ▽=0 ▽=0 ▽=0	GENERAL TOLERANCES (UNLESS SPECIFIED)	DIMENSION STYLE MM ONLY	SCALE 4:1	DESIGN UNITS METRIC	THIRD ANGLE PROJECTION																		
		<table border="1"> <tr> <th></th> <th>mm</th> <th>INCH</th> </tr> <tr> <td>4 PLACES</td> <td>± ---</td> <td>± ---</td> </tr> <tr> <td>3 PLACES</td> <td>± ---</td> <td>± ---</td> </tr> <tr> <td>2 PLACES</td> <td>± 0.13</td> <td>± ---</td> </tr> <tr> <td>1 PLACE</td> <td>± 0.25</td> <td>± ---</td> </tr> <tr> <td>0 PLACE</td> <td>±</td> <td>±</td> </tr> </table>		mm	INCH	4 PLACES	± ---	± ---	3 PLACES	± ---	± ---	2 PLACES	± 0.13	± ---	1 PLACE	± 0.25	± ---	0 PLACE	±	±	DRAWN BY ELO	DATE 2005/01/03	CHECKED BY MYCZEK	DATE 2005/01/04
	mm	INCH																						
4 PLACES	± ---	± ---																						
3 PLACES	± ---	± ---																						
2 PLACES	± 0.13	± ---																						
1 PLACE	± 0.25	± ---																						
0 PLACE	±	±																						
DRAFT WHERE APPLICABLE MUST REMAIN WITHIN DIMENSIONS		ANGULAR $\pm 3^\circ$	MATERIAL NO. SEE TABLE	DOCUMENT NO. SD-75659-001	SHEET NO. 1 OF 1																			
THIS DRAWING CONTAINS INFORMATION THAT IS PROPRIETARY TO MOLEX INCORPORATED AND SHOULD NOT BE USED WITHOUT WRITTEN PERMISSION																								