



Chipsmall Limited consists of a professional team with an average of over 10 year of expertise in the distribution of electronic components. Based in Hongkong, we have already established firm and mutual-benefit business relationships with customers from,Europe,America and south Asia,supplying obsolete and hard-to-find components to meet their specific needs.

With the principle of "Quality Parts,Customers Priority,Honest Operation,and Considerate Service",our business mainly focus on the distribution of electronic components. Line cards we deal with include Microchip,ALPS,ROHM,Xilinx,Pulse,ON,Everlight and Freescale. Main products comprise IC,Modules,Potentiometer,IC Socket,Relay,Connector.Our parts cover such applications as commercial,industrial, and automotives areas.

We are looking forward to setting up business relationship with you and hope to provide you with the best service and solution. Let us make a better world for our industry!



## Contact us

Tel: +86-755-8981 8866 Fax: +86-755-8427 6832

Email & Skype: info@chipsmall.com Web: www.chipsmall.com

Address: A1208, Overseas Decoration Building, #122 Zhenhua RD., Futian, Shenzhen, China

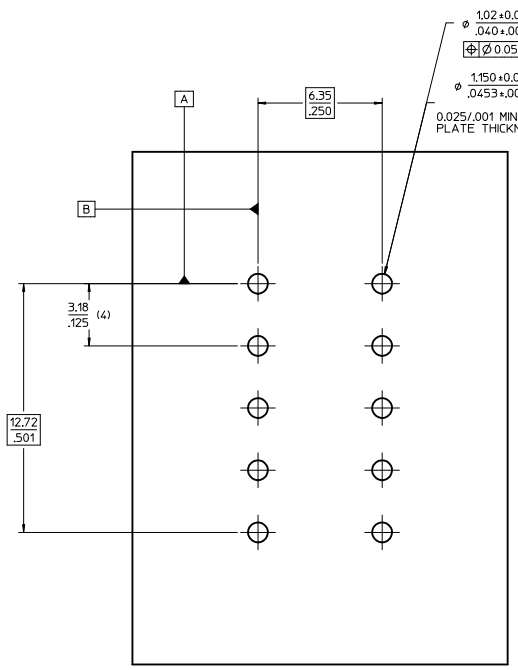
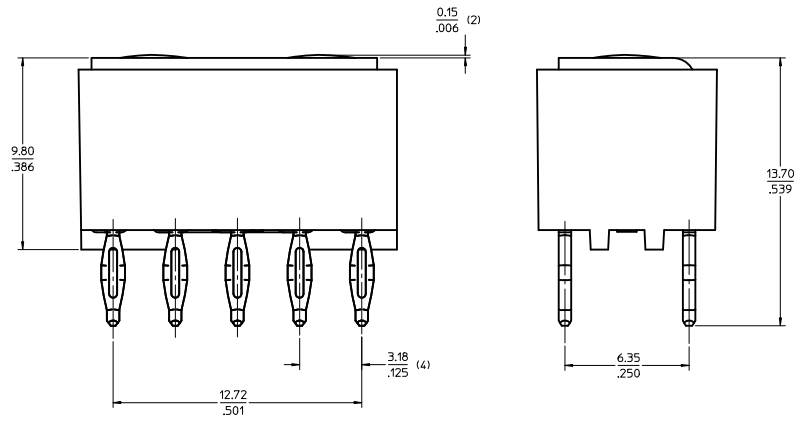
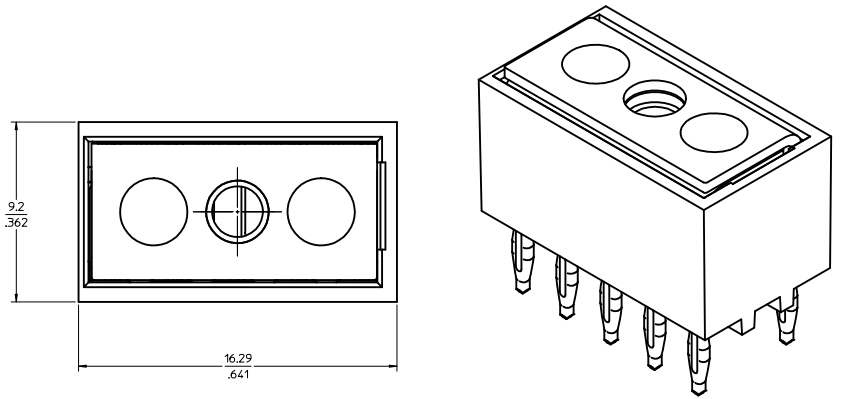


RECOMMENDED MOUNTING HARDWARE

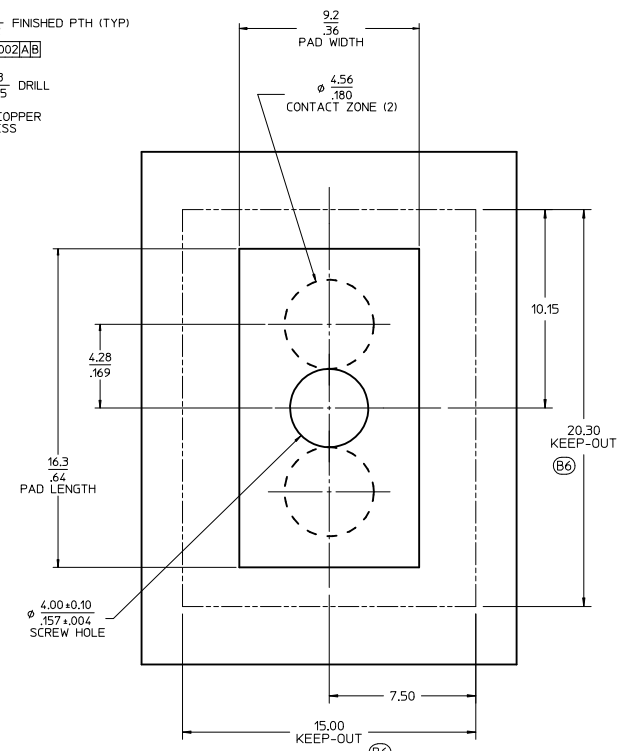
PCB THICKNESS	SCREW LENGTH	SCREW SIZE	FLAT WASHER SPEC.S (DIN 9021)	BELLEVILLE WASHER SPEC.S (DIN 6796)
0.063"	6.0mm	M3	MAT'L: STAINLESS STEEL WASHER OUTER DIA.: 9.0mm WASHER INNER DIA.: 3.2mm WASHER THICKNESS: 0.7mm	MAT'L: STAINLESS STEEL WASHER OUTER DIA.: 7.0mm WASHER INNER DIA.: 3.2mm WASHER THICKNESS: 0.6mm
0.093"	8.0mm	M3		
0.125"	8.0mm	M3		

\* SCREW MAT'L: STAINLESS STEEL  
\* RECOMMENDED TORQUE = .75Nm/6.6In-Lbs.

- NOTES:
1. MATERIAL: LCP, GLASS FILLED, BLACK, CONTACTS: COPPER ALLOY
  2. PLATING: SEE CHART
  3. PRODUCT SPECIFICATION: PS-76001-001.
  4. PACKAGING SPECIFICATION: PK-76001-901.
  5. TO REMOVE FROM PCB, SEE Z-POWER EXTRACTION TOOL INSTRUCTION SHEET ATS-621005300. USE EXTRACTION TOOL 621005300.



RECOMMENDED PCB FOOT PRINT LAYOUT  
PCB THICKNESS 2.36/.093 MIN  
PCB COMPLIANT TAIL INSERTION FORCE = 20LBS PER TAIL



RECOMMENDED PCB PAD LAYOUT

PART NUMBER	DESCRIPTION	PLATING
76001-0010	GOLD PLATED	SELECT GOLD: 30µ IN MIN SELECT MATTE TIN: 100µ IN MIN BOTH OVER NICKEL: 50µ IN MIN
76001-0110	TIN PLATED	MATTE TIN OVERALL: 100µ IN MIN NICKEL UNDERPLATE: 50µ IN MIN

ADD PCB KEEP-OUT DEC NO: UCP2011-1320 DRAWN: BHANDRA CHKD: APATEL APPR: APATEL DATE: 2010/11/15	QUALITY SYMBOLS	GENERAL TOLERANCES (UNLESS SPECIFIED)	DIMENSION STYLE	SCALE	DESIGN UNITS	THIRD ANGLE PROJECTION	
	∇=0 ∇=0 ∇=0	mm: ±.02 INCH: ±.002 4 PLACES: ±.05 3 PLACES: ±.05 2 PLACES: ±.05 1 PLACE: ±.05 ANGULAR ±1/2°	MM/IN	8:1	METRIC	DRAWN BY: DMCGOWAN DATE: 2005/11/07 CHECKED BY: MSANDBERG DATE: 2006/02/04 APPROVED BY: APATEL DATE: 2010/11/15	TITLE: Z-POWER 10 TAIL ASSEMBLY
	MATERIAL NO. SD-76001-001 DOCUMENT NO. SD-76001-001	DRAFT WHERE APPLICABLE MUST REMAIN WITHIN DIMENSIONS	SEE CHART	MOLEX INCORPORATED	SHEET NO. 1 OF 1		
	THIS DRAWING CONTAINS INFORMATION THAT IS PROPRIETARY TO MOLEX INCORPORATED AND SHOULD NOT BE USED WITHOUT WRITTEN PERMISSION						