



Chipsmall Limited consists of a professional team with an average of over 10 year of expertise in the distribution of electronic components. Based in Hongkong, we have already established firm and mutual-benefit business relationships with customers from,Europe,America and south Asia,supplying obsolete and hard-to-find components to meet their specific needs.

With the principle of “Quality Parts,Customers Priority,Honest Operation,and Considerate Service”,our business mainly focus on the distribution of electronic components. Line cards we deal with include Microchip,ALPS,ROHM,Xilinx,Pulse,ON,Everlight and Freescale. Main products comprise IC,Modules,Potentiometer,IC Socket,Relay,Connector.Our parts cover such applications as commercial,industrial, and automotives areas.

We are looking forward to setting up business relationship with you and hope to provide you with the best service and solution. Let us make a better world for our industry!



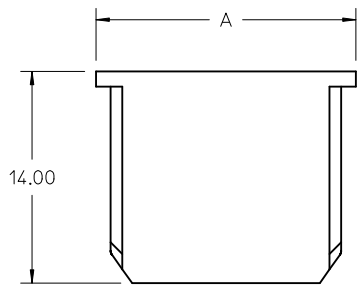
## Contact us

Tel: +86-755-8981 8866 Fax: +86-755-8427 6832

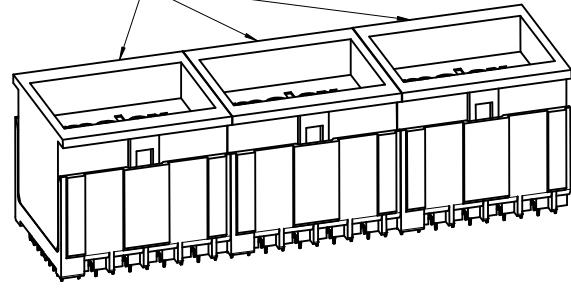
Email & Skype: info@chipsmall.com Web: www.chipsmall.com

Address: A1208, Overseas Decoration Building, #122 Zhenhua RD., Futian, Shenzhen, China

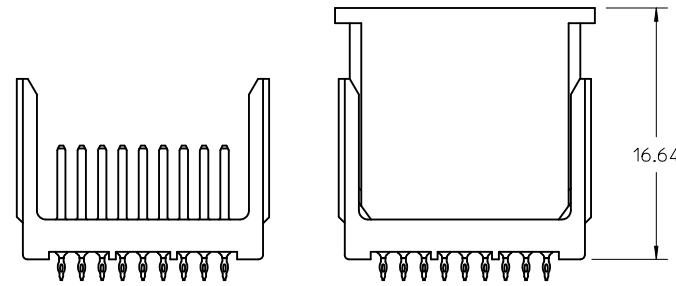
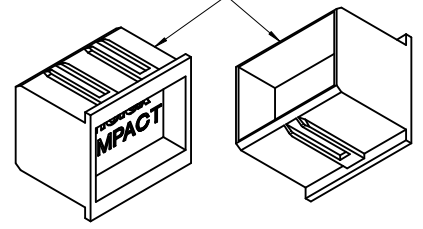




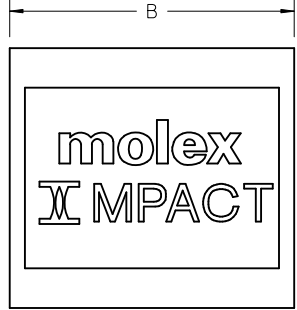
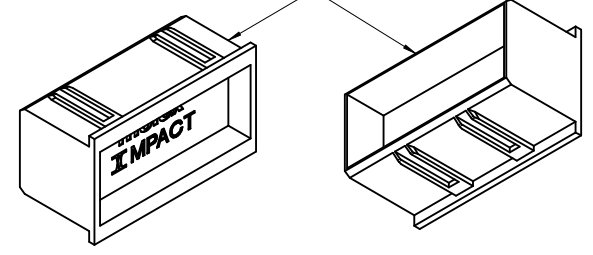
SEE NOTE 2



3-PAIR 10-COLUMN PROTECTIVE COVER



3-PAIR 16-COLUMN PROTECTIVE COVER



PART NUMBER	NUMBER OF PAIRS	NUMBER OF COLUMNS	DIM "A"	DIM "B"	TOOLED
76279-0210	2 PAIR	10 COLUMN	13.15	18.82	N/A
76279-0216	2 PAIR	16 COLUMN	13.15	30.22	N/A
76279-0310	3 PAIR	10 COLUMN	17.20	18.82	YES
76279-0316	3 PAIR	16 COLUMN	17.20	30.22	
76279-0408	4 PAIR	8 COLUMN	21.25	15.02	YES
76279-0410	4 PAIR	10 COLUMN	21.25	18.82	
76279-0416	4 PAIR	16 COLUMN	21.25	30.22	
76279-0510	5 PAIR	10 COLUMN	25.30	18.82	
76279-0516	5 PAIR	16 COLUMN	25.30	30.22	YES
76279-0610	6 PAIR	10 COLUMN	29.35	18.82	
76279-0614	6 PAIR	14 COLUMN	29.35	26.42	N/A
76279-0616	6 PAIR	16 COLUMN	29.35	30.22	YES

NOTES:

- MATERIAL: HIGH IMPACT POLYSTYRENE  
COLOR: NATURAL
- CONNECTORS WITH HEADER COVERS ARE END TO END STACKABLE.
- PACKAGE PER: PK-70873-804
- THIS PART CONFORMS TO MOLEX PRODUCT SPECIFICATION: PS-75710-999
- THIS PART CONFORMS TO CLASS B REQUIREMENTS OF COSMETIC SPEC PS-45499-002.

ADD 6X14 & 4X8 EC NO: UCP2011-2883 DRWN:JBINGHAM 2011/03/21 CHKD:JBINGHAM 2011/05/24 APPR:JBINGHAM 2011/05/25	QUALITY SYMBOLS	GENERAL TOLERANCES (UNLESS SPECIFIED)	DIMENSION STYLE	SCALE	DESIGN UNITS	THIRD ANGLE PROJECTION															
	$\nabla=0$ $\nabla=0$	<table border="1"> <tr> <th></th> <th>mm</th> <th>INCH</th> </tr> <tr> <td>4 PLACES</td> <td><math>\pm</math> ---</td> <td><math>\pm</math> ---</td> </tr> <tr> <td>3 PLACES</td> <td><math>\pm</math> ---</td> <td><math>\pm</math> ---</td> </tr> <tr> <td>2 PLACES</td> <td><math>\pm</math> 0.13</td> <td><math>\pm</math> ---</td> </tr> <tr> <td>1 PLACE</td> <td><math>\pm</math> 0.25</td> <td><math>\pm</math> ---</td> </tr> </table>		mm	INCH	4 PLACES	$\pm$ ---	$\pm$ ---	3 PLACES	$\pm$ ---	$\pm$ ---	2 PLACES	$\pm$ 0.13	$\pm$ ---	1 PLACE	$\pm$ 0.25	$\pm$ ---	IN/MM	4:1	INCH	
		mm	INCH																		
	4 PLACES	$\pm$ ---	$\pm$ ---																		
3 PLACES	$\pm$ ---	$\pm$ ---																			
2 PLACES	$\pm$ 0.13	$\pm$ ---																			
1 PLACE	$\pm$ 0.25	$\pm$ ---																			
DESCRIPTION			DRAWN BY	DATE	TITLE																
REV			JMENDOZA	2008/12/17	IMPACT BP ASSY PROTECTIVE HEADER COVERS																
			CHECKED BY	DATE																	
			JB INGHAM	2008/12/17																	
			APPROVED BY	DATE																	
			JB INGHAM	2009/12/29																	
			MATERIAL NO.	DOCUMENT NO.																	
			SEE CHART		MOLEX MOLEX INCORPORATED																
			DRAFT WHERE APPLICABLE MUST REMAIN WITHIN DIMENSIONS		SD-76279-001	SHEET NO. 1 OF 1															
			SIZE	THIS DRAWING CONTAINS INFORMATION THAT IS PROPRIETARY TO MOLEX INCORPORATED AND SHOULD NOT BE USED WITHOUT WRITTEN PERMISSION																	