



Chipsmall Limited consists of a professional team with an average of over 10 year of expertise in the distribution of electronic components. Based in Hongkong, we have already established firm and mutual-benefit business relationships with customers from,Europe,America and south Asia,supplying obsolete and hard-to-find components to meet their specific needs.

With the principle of “Quality Parts,Customers Priority,Honest Operation,and Considerate Service”,our business mainly focus on the distribution of electronic components. Line cards we deal with include Microchip,ALPS,ROHM,Xilinx,Pulse,ON,Everlight and Freescale. Main products comprise IC,Modules,Potentiometer,IC Socket,Relay,Connector.Our parts cover such applications as commercial,industrial, and automotives areas.

We are looking forward to setting up business relationship with you and hope to provide you with the best service and solution. Let us make a better world for our industry!



Contact us

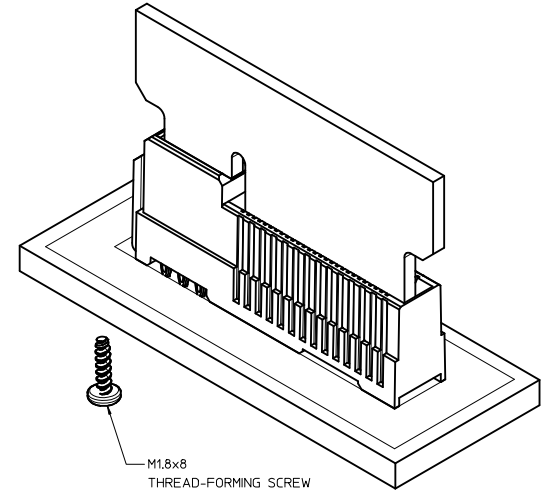
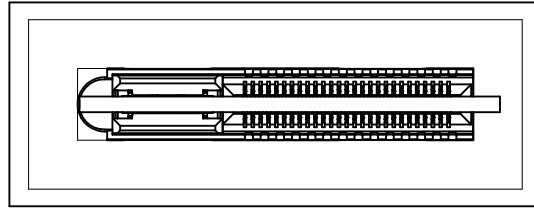
Tel: +86-755-8981 8866 Fax: +86-755-8427 6832

Email & Skype: info@chipsmall.com Web: www.chipsmall.com

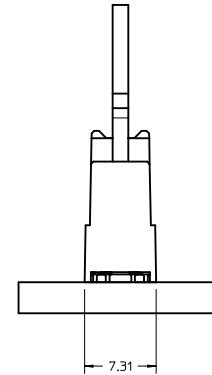
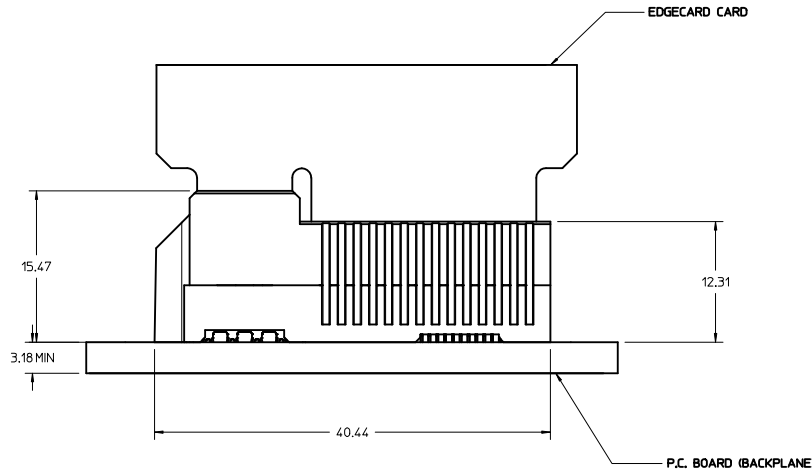
Address: A1208, Overseas Decoration Building, #122 Zhenhua RD., Futian, Shenzhen, China



P.C. BOARD MOUNTING



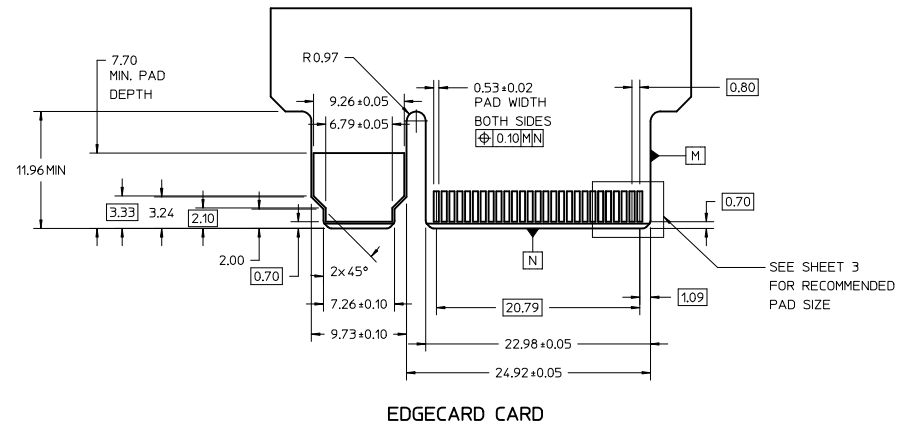
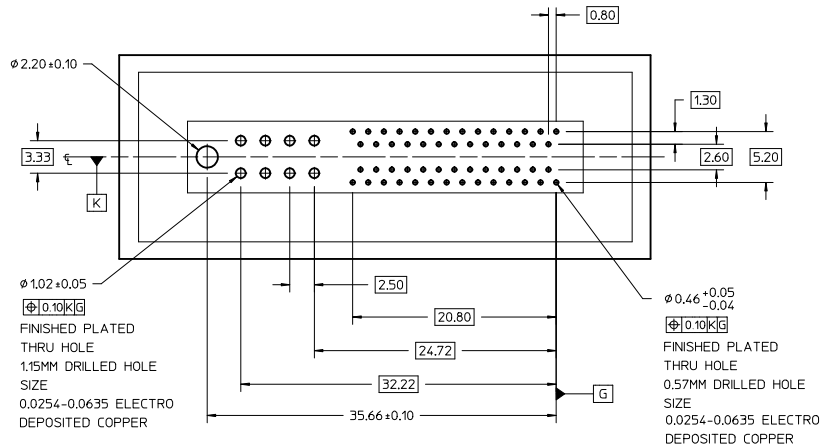
M1.8x8
 THREAD-FORMING SCREW
 SUGGESTED SOURCE:
 ACUMENT
 6125 EIGHTEEN MILE ROAD
 STERLING HEIGHTS, MICHIGAN 48314
 TEL.: 1.800.544.6117
 P/N: 3BTP8567-00
 (NOT SUPPLIED BY MOLEX)



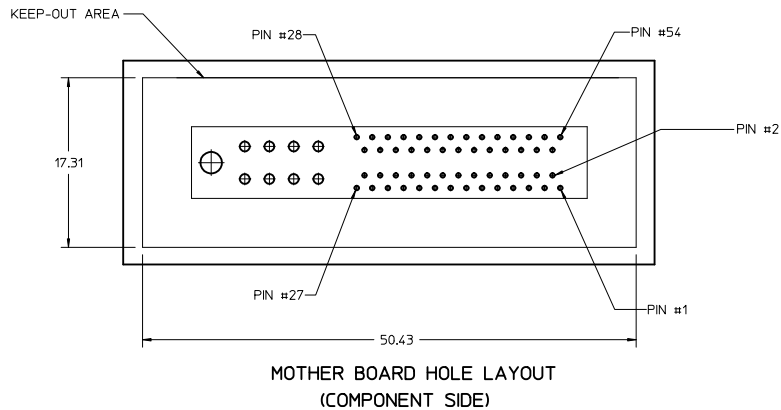
NOTES:

1. MATERIAL:
 HOUSING - GLASS FILLED THERMOPLASTIC, 94-V0, BLACK
 TERMINALS - COPPER ALLOY
2. FINISH:
 CONTACT AREA: HARD GOLD -0.76 μ m MIN OVER 3.80 μ NICKEL
 COMPLIANT AREA: TIN - 0.76/152 μ m OVER NICKEL
3. REFER TO PS-76861-100 PRODUCT SPECIFICATION FOR ALL
 ELECTRICAL, MECHANICAL AND ENVIRONMENTAL SPECIFICATIONS.
4. REFER TO PK-76861-900 FOR ALL PACKAGING SPECIFICATIONS.
5. PROCESSING: PRESSFIT TO PC BOARD.
6. MATING PC BOARD THICKNESS = 1.60±0.16MM OVER CONTACT PADS.
7. PRODUCT IS ELV AND RoHS COMPLIANT. LEVEL OF COMPLIANCE: 6/6
 ALL BANNED SUBSTANCES ARE REMOVED:
 Pb (LEAD)
 HEXAVALENT CHROMIUM (CrVI)
 CADMIUM
 MERCURY
 POLYBROMINATED BIPHENYL (PBB)
 POLYBROMINATED DIPHENYL ETHER (PBDE)
8. THIS PART CONFORMS TO CLASS B REQUIREMENTS
 OF COSMETIC SPEC PS-45499-002
9. MAXIMUM SCREW TORQUE FORCE 0.12Nm.

CORRECTED ERROR ON SHEET 2 IEC NO. UCFP2012-3528 DRAWN/DROSCA 2012/04/26 CHYD: APPR.: JCOMERCL 2012/06/04 REV:	QUALITY SYMBOLS	GENERAL TOLERANCES (UNLESS SPECIFIED)	DIMENSION STYLE MM ONLY	SCALE 4:1	DESIGN UNITS METRIC	THIRD ANGLE PROJECTION
	▽-0	4 PLACES ± 0.13	mm	DRAWN BY DROSCA	DATE 8/11/09	TITLE ESP 12.5GB
	▽-0	3 PLACES ± 0.13	INCH	CHECKED BY JCOMERCL	DATE 8/11/09	0.062"PCB/0.8MM PITCH
	▽-0	2 PLACES ± 0.13		APPROVED BY JCOMERCL	DATE 8/11/09	54 CKTS
		1 PLACE ± 0.25	ANGULAR ±1/2°	MATERIAL NO. 768611120		MOLEX INCORPORATED DOCUMENT NO. SD-76861-120
		DRAFT WHERE APPLICABLE MUST REMAIN WITHIN DIMENSIONS		SHEET NO. 1 OF 4		



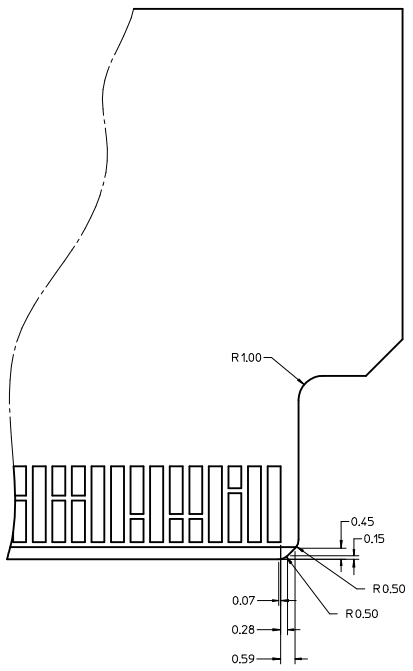
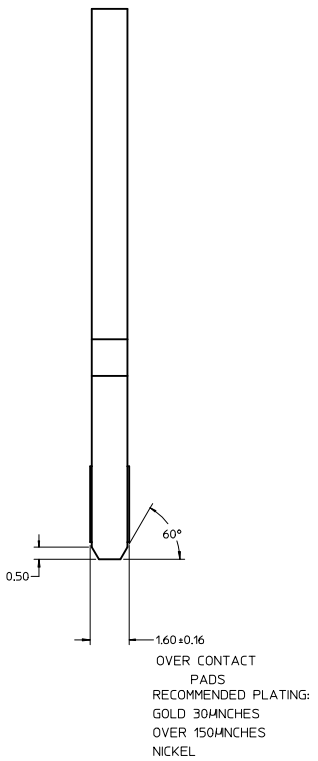
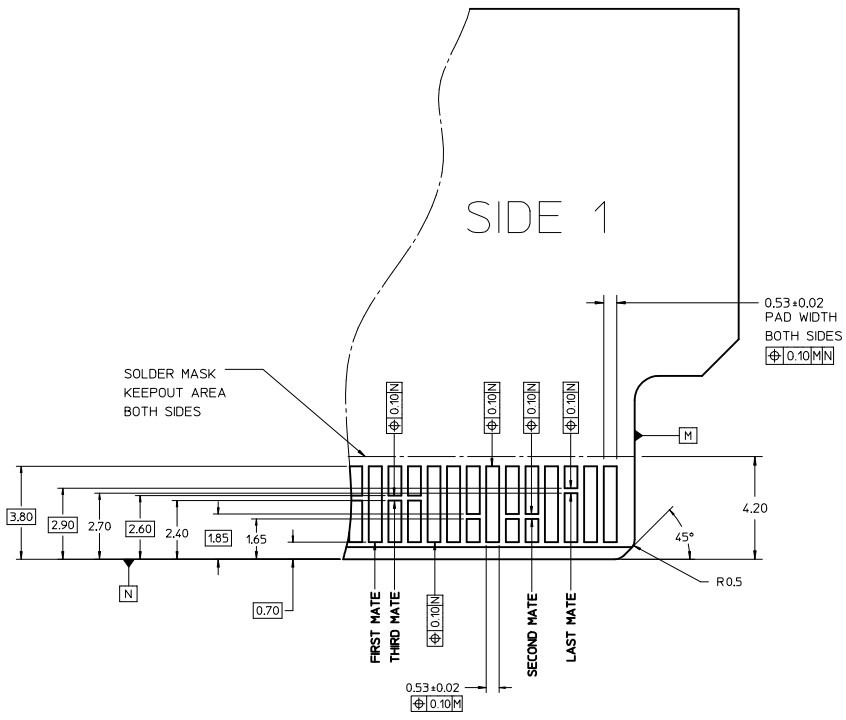
EDGECARD CARD



MOTHER BOARD HOLE LAYOUT (COMPONENT SIDE)

SEE SHEET 1 IEC NO: UCF2012-3528 DRAWN BY: DROSICA CHKD: JCOMERCI APPR: JCOMERCI 2012/04/26 2012/06/04	QUALITY SYMBOLS	GENERAL TOLERANCES (UNLESS SPECIFIED)	DIMENSION STYLE	SCALE	DESIGN UNITS	THIRD ANGLE PROJECTION															
	$\nabla=0$ $\nabla=0$	<table border="1"> <thead> <tr> <th></th> <th>mm</th> <th>INCH</th> </tr> </thead> <tbody> <tr> <td>4 PLACES</td> <td>± 0.13</td> <td>± 0.005</td> </tr> <tr> <td>3 PLACES</td> <td>± 0.25</td> <td>± 0.010</td> </tr> <tr> <td>2 PLACES</td> <td>± 0.50</td> <td>± 0.020</td> </tr> <tr> <td>1 PLACE</td> <td>± 1.00</td> <td>± 0.040</td> </tr> </tbody> </table>		mm	INCH	4 PLACES	± 0.13	± 0.005	3 PLACES	± 0.25	± 0.010	2 PLACES	± 0.50	± 0.020	1 PLACE	± 1.00	± 0.040	MM ONLY DRAWN BY: DROSICA DATE: 8/11/09 CHECKED BY: JCOMERCI DATE: 8/11/09 APPROVED BY: JCOMERCI DATE: 8/11/09	4:1	METRIC	
		mm	INCH																		
	4 PLACES	± 0.13	± 0.005																		
3 PLACES	± 0.25	± 0.010																			
2 PLACES	± 0.50	± 0.020																			
1 PLACE	± 1.00	± 0.040																			
DRAFT WHERE APPLICABLE MUST REMAIN WITHIN DIMENSIONS	MATERIAL NO: SEE SHEET 1 SIZE: D	TITLE: ESP 12.5GB 0.062"PCB/0.8MM PITCH 54 CKTS MOLEX INCORPORATED DOCUMENT NO: SD-76861-120			SHEET NO: 2 OF 4																
THIS DRAWING CONTAINS INFORMATION THAT IS PROPRIETARY TO MOLEX INCORPORATED AND SHOULD NOT BE USED WITHOUT WRITTEN PERMISSION																					

MODULE EDGE CARD CONTACT DETAIL



NOTE:
 THESE ARE GENERIC DETAILS THAT DESCRIBE THE CONFIGURATION OF VARIOUS PCB DESIGN ELEMENTS. THE CUSTOMER MUST DETERMINE WHERE AND WHEN TO USE EACH ELEMENT TO ACCOMMODATE THEIR SPECIFIC APPLICATION.

SEE SHEET 1 IEC NO: UCF2012-3528 DRAWN: DROSICA 2012/04/26 CHYD: APPR: JCOMERCI 2012/06/04	QUALITY SYMBOLS	GENERAL TOLERANCES (UNLESS SPECIFIED)		DIMENSION STYLE	SCALE	DESIGN UNITS	THIRD ANGLE PROJECTION
	▼=0 ▽=0	mm	INCH	MM ONLY	10:1	METRIC	
	4 PLACES ±---	±---	±---	DRAWN BY	DATE	TITLE	
	3 PLACES ±---	±---	±---	DROSICA	8/11/09	ESP 12.5GB	
	2 PLACES ±0.13	±---	±---	CHECKED BY	DATE	0.062"PCB/0.8MM PITCH	
	1 PLACE ±0.25	±---	±---	JCOMERCI	8/11/09	54 CKTS	
	ANGULAR ±1/2°			APPROVED BY	DATE	MOLEX INCORPORATED	
	DRAFT WHERE APPLICABLE MUST REMAIN WITHIN DIMENSIONS			JCOMERCI	8/11/09		
				WATERL NO.	DOCUMENT NO.	SD-76861-120	
				SEE SHEET 1		SHEET NO. 3 OF 4	
				THIS DRAWING CONTAINS INFORMATION THAT IS PROPRIETARY TO MOLEX INCORPORATED AND SHOULD NOT BE USED WITHOUT WRITTEN PERMISSION			

LEGEND EDGELINE 54 CIRCUITS / 0.062"PCB						
COMPONENT SIDE 1			COMPONENT SIDE 2			
PIN NO.	SIGNAL	ALLEGRO PIN NO.	SIGNAL	PIN NO.		
54	GND	○	SIGNAL 1	1		
53	SATA0_TX_P	○	SIGNAL 2	2		
52	SATA0_TX_N	○	SIGNAL 3	3		
51	GND	○	SIGNAL 4	4		
50	SATA0_RX_N	○	SIGNAL 5	5		
49	SATA0_RX_P	○	SIGNAL 6	6		
48	GND	○	PSV_STBY1	7		
47	SATA1_TX_P	○	SIGNAL 7	8		
46	SATA1_TX_N	○	SIGNAL 8	9		
45	GND	○	SIGNAL 9	10		
44	SATA1_RX_N	○	SIGNAL 10	11		
43	SATA1_RX_P	○	SIGNAL 11	12		
42	GND	○	SIGNAL 12	13		
41	SATA2_TX_P	○	SIGNAL 13	14		
40	SATA2_TX_N	○	SIGNAL 14	15		
39	GND	○	PSV_STBY2	16		
38	SATA2_RX_N	○	SIGNAL 15	17		
37	SATA2_RX_P	○	SIGNAL 16	18		
36	GND	○	GND	19		
35	SATA3_TX_P	○	SATA3_RX_P	20		
34	SATA3_TX_N	○	SATA3_RX_N	21		
33	GND	○	GND	22		
32	RESERVE	○	RESERVE	23		
31	TBD	○	TBD	24		
30	TBD	○	TBD	25		
29	TBD	○	TBD	26		
28	TBD	○	TBD	27		
POWER		LPH POWER, 2 CIRCUIT			RETURN	

SEE SHEET 1 IEC NO: UCF2012-3528 DRAWN: DROSCA 2012/04/26 CHKD: APPR: JCOMERCI 2012/06/04 REV:	QUALITY SYMBOLS	GENERAL TOLERANCES (UNLESS SPECIFIED)	DIMENSION STYLE	SCALE	DESIGN UNITS	THIRD ANGLE PROJECTION															
	▽=0 ▽=0	<table border="1"> <tr><th></th><th>mm</th><th>INCH</th></tr> <tr><td>4 PLACES</td><td>±---</td><td>±---</td></tr> <tr><td>3 PLACES</td><td>±---</td><td>±---</td></tr> <tr><td>2 PLACES</td><td>±0.13</td><td>±---</td></tr> <tr><td>1 PLACE</td><td>±0.25</td><td>±---</td></tr> </table> ANGULAR ±1/2°		mm	INCH	4 PLACES	±---	±---	3 PLACES	±---	±---	2 PLACES	±0.13	±---	1 PLACE	±0.25	±---	MM ONLY 4:1 METRIC	DRAWN BY: DROSCA DATE: 8/11/09 CHECKED BY: JCOMERCI DATE: 8/11/09 APPROVED BY: JCOMERCI DATE: 8/11/09	TITLE: ESP 12.5GB 0.062"PCB/0.8MM PITCH 54 CKTS	
		mm	INCH																		
	4 PLACES	±---	±---																		
3 PLACES	±---	±---																			
2 PLACES	±0.13	±---																			
1 PLACE	±0.25	±---																			
DRAFT WHERE APPLICABLE MUST REMAIN WITHIN DIMENSIONS	MATERIAL NO: SEE SHEET 1	DOCUMENT NO: SD-76861-120	SHEET NO. 4 OF 4																		
THIS DRAWING CONTAINS INFORMATION THAT IS PROPRIETARY TO MOLEX INCORPORATED AND SHOULD NOT BE USED WITHOUT WRITTEN PERMISSION																					