



Chipsmall Limited consists of a professional team with an average of over 10 year of expertise in the distribution of electronic components. Based in Hongkong, we have already established firm and mutual-benefit business relationships with customers from,Europe,America and south Asia,supplying obsolete and hard-to-find components to meet their specific needs.

With the principle of “Quality Parts,Customers Priority,Honest Operation,and Considerate Service”,our business mainly focus on the distribution of electronic components. Line cards we deal with include Microchip,ALPS,ROHM,Xilinx,Pulse,ON,Everlight and Freescale. Main products comprise IC,Modules,Potentiometer,IC Socket,Relay,Connector.Our parts cover such applications as commercial,industrial, and automotives areas.

We are looking forward to setting up business relationship with you and hope to provide you with the best service and solution. Let us make a better world for our industry!



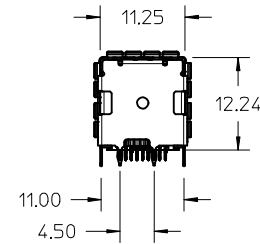
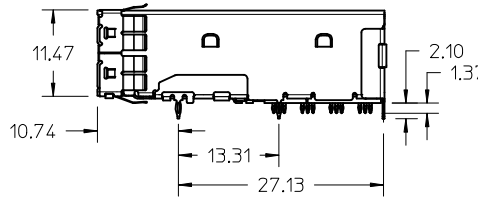
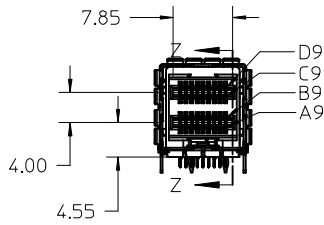
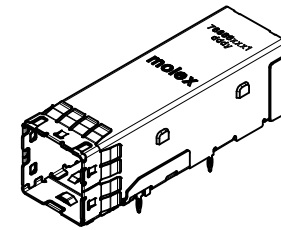
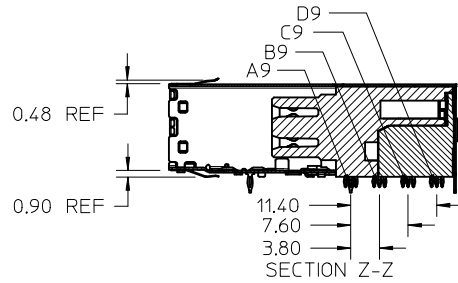
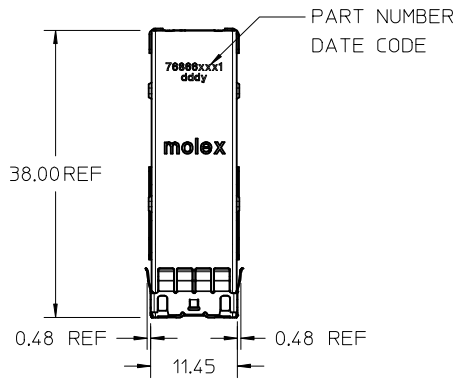
## Contact us

Tel: +86-755-8981 8866 Fax: +86-755-8427 6832

Email & Skype: info@chipsmall.com Web: www.chipsmall.com

Address: A1208, Overseas Decoration Building, #122 Zhenhua RD., Futian, Shenzhen, China





NOTES:

1. MATERIALS:

CONNECTOR HOUSING: HIGH TEMPERATURE THERMOPLASTIC  
GLASS FILLED, UL 94V-0  
EMI CAGE: NICKEL SILVER ALLOY  
EMI FINGERS: COPPER ALLOY  
TERMINALS: COPPER ALLOY

2. FINISHES:

EMI FINGERS: 0.50µM MIN NICKEL  
CONTACT AREA: 0.76µM MIN GOLD OVER 2.54µM MIN NICKEL  
TAIL AREA: 0.76µM-1.52µM OVER 2.54µM MIN NICKEL

3. PRODUCT SPECIFICATION: PS-76866-001

4. PACKAGING SPECIFICATION: PK-76866-001

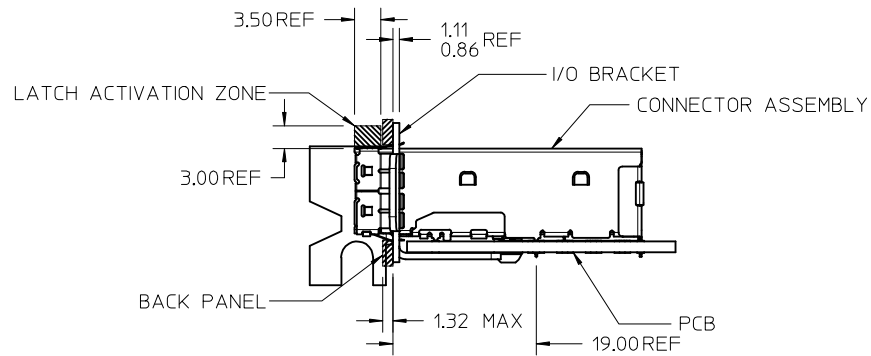
5. MATES WITH: MOLEX CABLE SERIES 111068

6. RECOMMENDED MOUNTING HARDWARE: REFER TO APPLICATION SPECIFICATION  
AS-76866-001

7. PLUG MODULE PCB LAYOUT REFER TO SD-76866-9900

<b>REV'D NOTES</b> IEC NO: UCP2015-5060 DRINKCALLAGHAN 2015/06/01 CHKD:TMCCLELLAND 2015/06/03 APPR:TMCCLELL 2015/06/18	DESCRIPTION REV D4	QUALITY SYMBOLS ▽=0 ▽=0	GENERAL TOLERANCES (UNLESS SPECIFIED) <table border="1"> <tr> <th></th> <th>mm</th> <th>INCH</th> </tr> <tr> <td>4 PLACES</td> <td>± 0.15</td> <td>± 0.006</td> </tr> <tr> <td>3 PLACES</td> <td>± 0.25</td> <td>± 0.010</td> </tr> <tr> <td>2 PLACES</td> <td>± 0.38</td> <td>± 0.015</td> </tr> <tr> <td>1 PLACE</td> <td>± 0.51</td> <td>± 0.020</td> </tr> </table>		mm	INCH	4 PLACES	± 0.15	± 0.006	3 PLACES	± 0.25	± 0.010	2 PLACES	± 0.38	± 0.015	1 PLACE	± 0.51	± 0.020	DIMENSION STYLE <b>MM ONLY</b> DRAWN BY DATE KLANG 2009/03/04 CHECKED BY DATE TMCCLELLAND 2010/01/14 APPROVED BY DATE MBANAKIS 2010/01/14	SCALE <b>2:1</b> DESIGN UNITS <b>METRIC</b> THIRD ANGLE PROJECTION	TITLE <b>IPASS PLUS HD 1X1 ASSEMBLY</b>
			mm	INCH																	
		4 PLACES	± 0.15	± 0.006																	
		3 PLACES	± 0.25	± 0.010																	
2 PLACES	± 0.38	± 0.015																			
1 PLACE	± 0.51	± 0.020																			
DRAFT WHERE APPLICABLE MUST REMAIN WITHIN DIMENSIONS		MATERIAL NO. <b>76866-0011</b>	MOLEX INCORPORATED	DOCUMENT NO. <b>SD-76866-001</b>	SHEET NO. <b>1 OF 6</b>																
THIS DRAWING CONTAINS INFORMATION THAT IS PROPRIETARY TO MOLEX INCORPORATED AND SHOULD NOT BE USED WITHOUT WRITTEN PERMISSION																					

# PCI ADD-IN CARD APPLICATION



ASSEMBLED VIEW

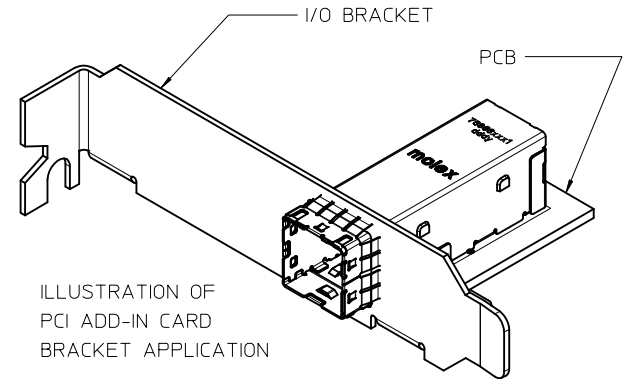
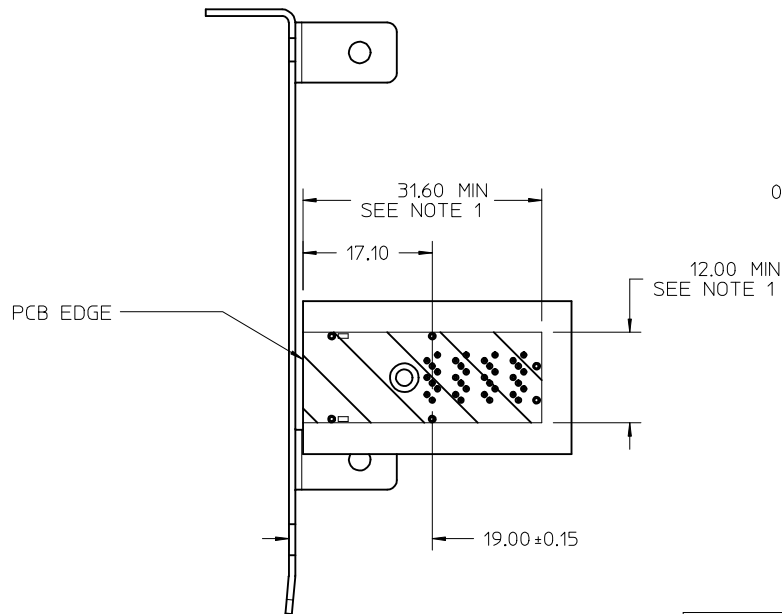
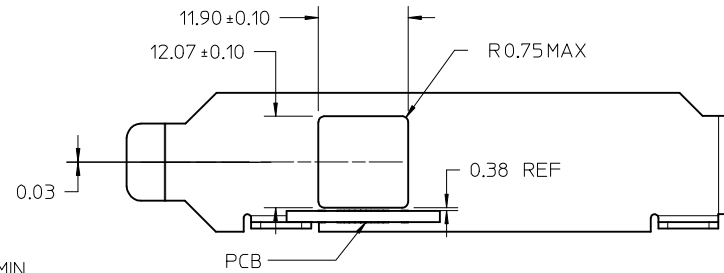


ILLUSTRATION OF  
PCI ADD-IN CARD  
BRACKET APPLICATION



PCB TO BRACKET VIEW



I/O BRACKET CUT OUT  
(BRACKET NOT SUPPLIED)

NOTES:  
1. CONNECTOR KEEP OUT AREA

SEE SHEET 1 EC NO: UCP2015-5060 DRW: KCALLAGHAN 2015/06/01 CHKD: TMCLELLAND 2015/06/03 APPR: TMCLELL 2015/06/18 REV: D4	QUALITY SYMBOLS ▽=0 ▽=0	GENERAL TOLERANCES (UNLESS SPECIFIED) <table border="1"> <thead> <tr> <th></th> <th>mm</th> <th>INCH</th> </tr> </thead> <tbody> <tr> <td>4 PLACES</td> <td>± ---</td> <td>± ---</td> </tr> <tr> <td>3 PLACES</td> <td>± ---</td> <td>± ---</td> </tr> <tr> <td>2 PLACES</td> <td>± 0.13</td> <td>± ---</td> </tr> <tr> <td>1 PLACE</td> <td>± 0.25</td> <td>± ---</td> </tr> </tbody> </table>		mm	INCH	4 PLACES	± ---	± ---	3 PLACES	± ---	± ---	2 PLACES	± 0.13	± ---	1 PLACE	± 0.25	± ---	DIMENSION STYLE <b>MM ONLY</b> DRAWN BY DATE KLANG 2009/03/04 CHECKED BY DATE TMCLELLAND 2010/01/14 APPROVED BY DATE MBANAKIS 2010/01/14 MATERIAL NO.	SCALE <b>2:1</b> TITLE IPASS PLUS HD 1X1 ASSEMBLY	DESIGN UNITS METRIC THIRD ANGLE PROJECTION	MOLEX INCORPORATED DOCUMENT NO. SD-76866-001 SHEET NO. 2 OF 6
		mm	INCH																		
	4 PLACES	± ---	± ---																		
	3 PLACES	± ---	± ---																		
2 PLACES	± 0.13	± ---																			
1 PLACE	± 0.25	± ---																			
DRAFT WHERE APPLICABLE MUST REMAIN WITHIN DIMENSIONS		SEE SHEET 1 SIZE C	THIS DRAWING CONTAINS INFORMATION THAT IS PROPRIETARY TO MOLEX INCORPORATED AND SHOULD NOT BE USED WITHOUT WRITTEN PERMISSION																		

# ALL OTHER M/B APPLICATIONS

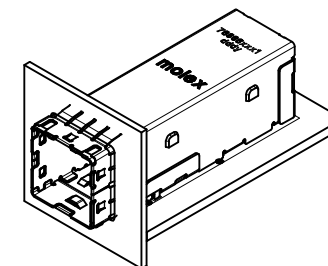
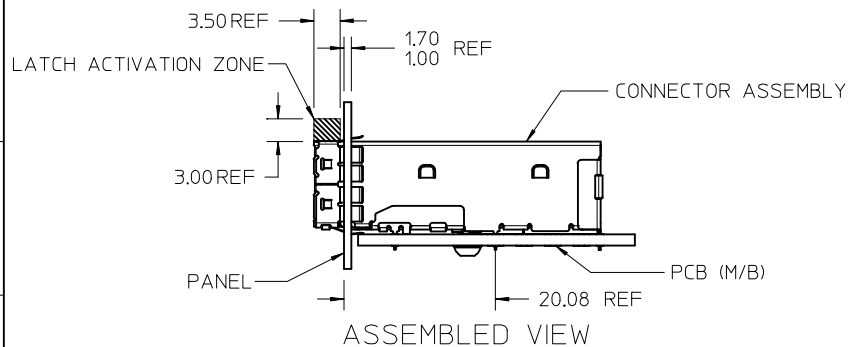
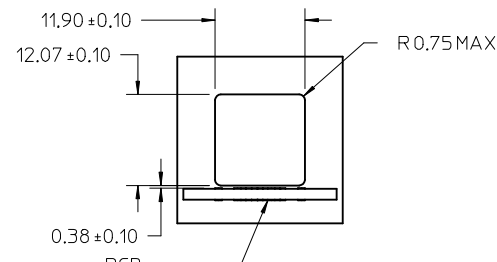
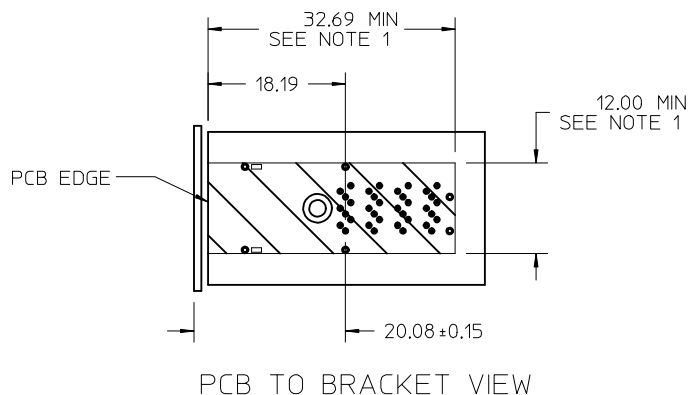


ILLUSTRATION OF ALL OTHER M/B BRACKET APPLICATION

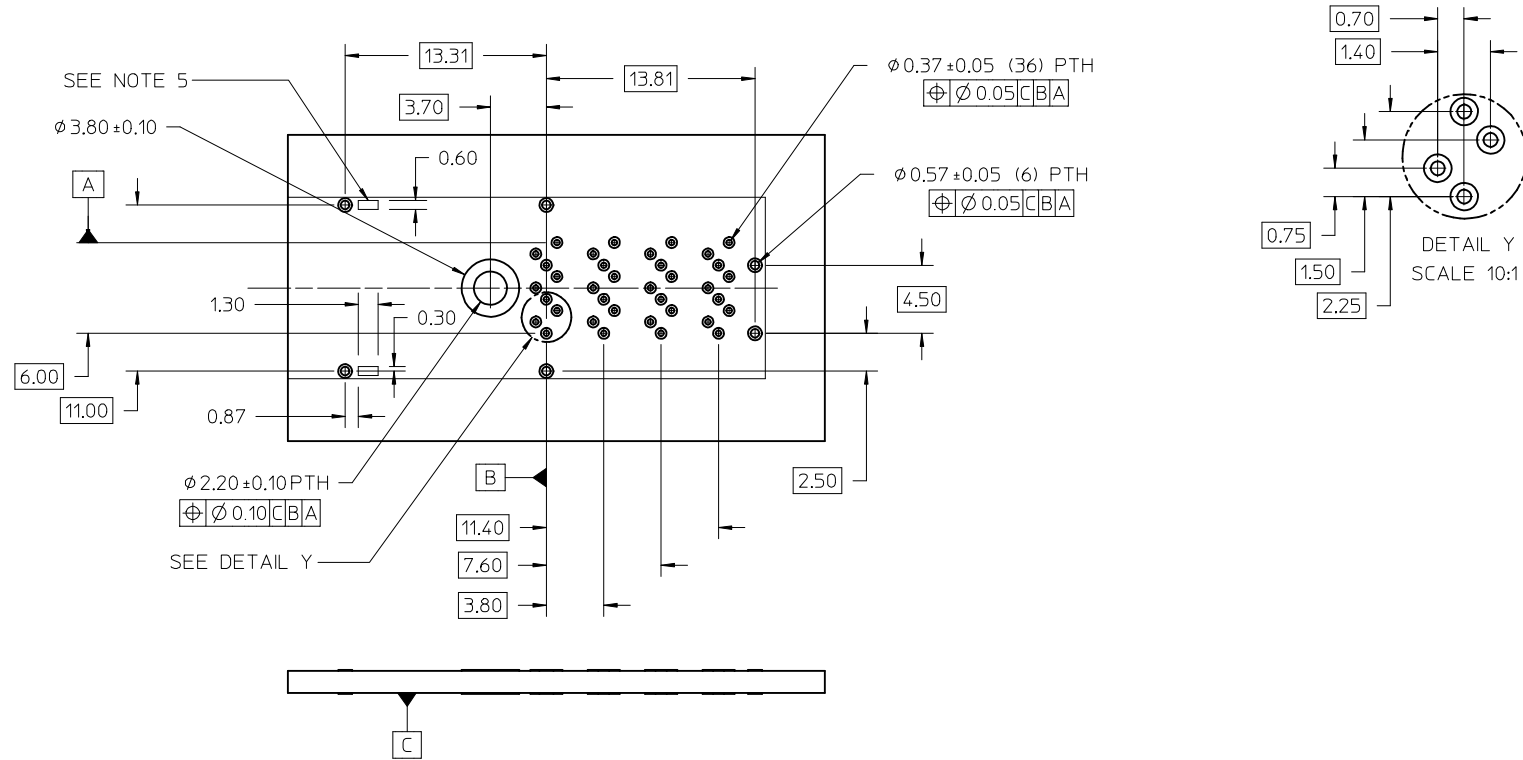


I/O BRACKET CUT OUT (BRACKET NOT SUPPLIED)

NOTES:  
1. CONNECTOR KEEP OUT AREA

SEE SHEET 1 EC NO: UCP2015-5060 DRW:KCALLAGHAN 2015/06/01 CHKD:TMCCLELLAND 2015/06/03 APPR:TMCCLELL 2015/06/18	QUALITY SYMBOLS ▽=0 ▽=0 ▽=0	GENERAL TOLERANCES (UNLESS SPECIFIED)		DIMENSION STYLE <b>MM ONLY</b>	SCALE <b>2:1</b>	DESIGN UNITS <b>METRIC</b>	THIRD ANGLE PROJECTION
		4 PLACES ± --- ± ---	DRAWN BY KLANG	DATE 2009/03/04	TITLE <b>IPASS PLUS HD 1X1 ASSEMBLY</b>		
		3 PLACES ± --- ± ---	CHECKED BY TMCCLELLAND	DATE 2010/01/14	MOLEX INCORPORATED		
		2 PLACES ± 0.13 ± ---	APPROVED BY MBANAKIS	DATE 2010/01/14	MATERIAL NO. SEE SHEET 1	DOCUMENT NO. SD-76866-001	SHEET NO. 3 OF 6
1 PLACE ± 0.25 ± ---	ANGULAR ± 1/2°		THIS DRAWING CONTAINS INFORMATION THAT IS PROPRIETARY TO MOLEX INCORPORATED AND SHOULD NOT BE USED WITHOUT WRITTEN PERMISSION				
DRAFT WHERE APPLICABLE MUST REMAIN WITHIN DIMENSIONS							

# RECOMMENDED FOOTPRINT



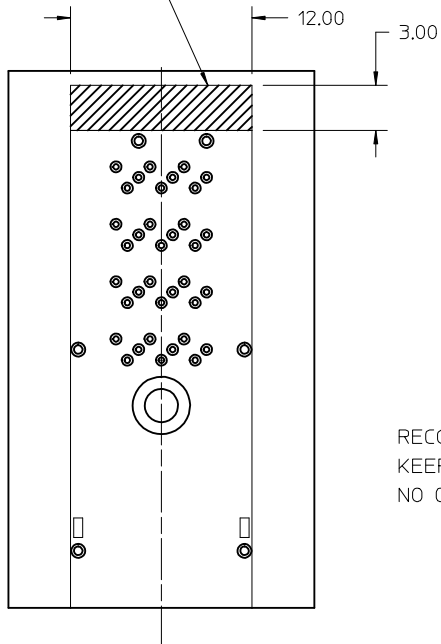
## NOTES:

1. RECOMMENDED DRILL SIZE AND ANNULAR RING FOR A  $0.37\phi$  FINISHED PTH - REFER TO APPLICATION SPECIFICATION AS-76866-001
2. MINIMUM RECOMMENDED SPACING: 14.00MM
3. MINIMUM PCB THICKNESS: 1.57MM
4. RECOMMENDED DRILL SIZE AND ANNULAR RING FOR A  $0.57\phi$  FINISHED PTH - REFER TO APPLICATION SPECIFICATION AS-76866-001
5. CAGE STAND OFF AREA, NO TRACES ON SURFACE OF PCB IN THESE AREAS

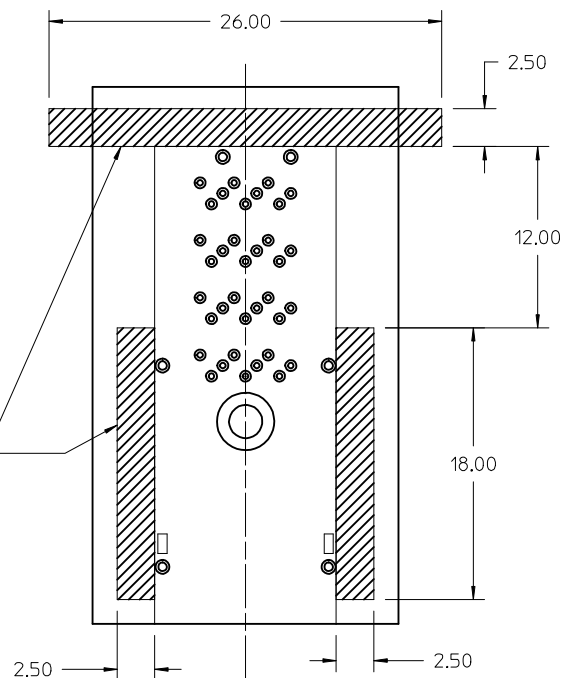
SEE SHEET 1 EC NO: UCP2015-5060 DRAWN: KCALLAGHAN 2015/06/01 CHKD: TMCCLELLAND 2015/06/03 APPR: TMCCLELL 2015/06/18	QUALITY SYMBOLS ▽=0 ▽=0	GENERAL TOLERANCES (UNLESS SPECIFIED)		DIMENSION STYLE <b>MM ONLY</b>	SCALE <b>4:1</b>	DESIGN UNITS <b>METRIC</b>	THIRD ANGLE PROJECTION
		4 PLACES ± --- ± ---	3 PLACES ± --- ± ---	2 PLACES ± 0.13 ± ---	1 PLACE ± 0.25 ± ---	DRAWN BY KLANG	DATE 2009/03/04
D4	DESCRIPTION	ANGULAR ± 1/2°		APPROVED BY MBANAKIS		DATE 2010/01/14	
		DRAFT WHERE APPLICABLE MUST REMAIN WITHIN DIMENSIONS		MATERIAL NO.		DOCUMENT NO.	
SIZE C				SEE SHEET 1		MOLEX INCORPORATED	
				SD-76866-001		SHEET NO. 4 OF 6	
THIS DRAWING CONTAINS INFORMATION THAT IS PROPRIETARY TO MOLEX INCORPORATED AND SHOULD NOT BE USED WITHOUT WRITTEN PERMISSION							

# RECOMMENDED TOOLING KEEP OUT AREAS

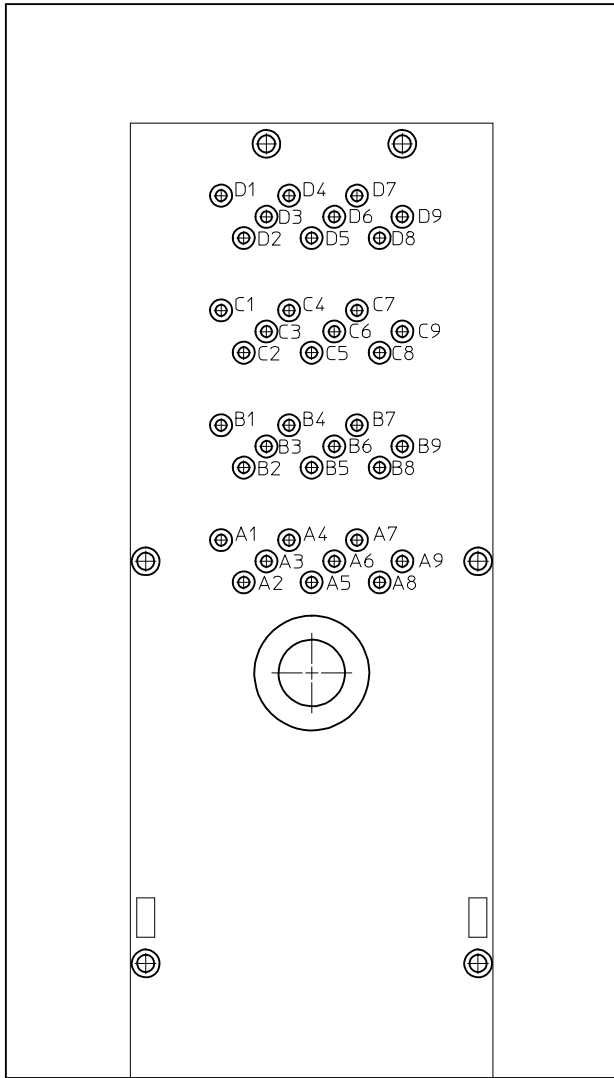
RECOMMENDED INSERTION TOOL  
KEEP OUT AREA  
NO COMPONENTS IN THIS AREA  
MORE THAN 7.50 mm TALL



RECOMMENDED EXTRACTION TOOL  
KEEP OUT AREA  
NO COMPONENTS IN THESE AREAS



SEE SHEET 1 EC NO: UCP2015-5060 DRWN: KALLAGHAN 2015/06/01 CHKD: TMCCLELLAND 2015/06/03 APPR: TMCCLELL 2015/06/18	QUALITY SYMBOLS	GENERAL TOLERANCES (UNLESS SPECIFIED)		DIMENSION STYLE	SCALE	DESIGN UNITS	THIRD ANGLE PROJECTION
	▽=0	mm	INCH	MM ONLY	4:1	METRIC	
	▽=0	4 PLACES ± --- ± ---		DRAWN BY	DATE	TITLE	
	▽=0	3 PLACES ± --- ± ---		KLANG	2009/03/04	IPASS PLUS HD 1X1 ASSEMBLY	
		2 PLACES ± 0.13 ± ---		CHECKED BY	DATE		
		1 PLACE ± 0.25 ± ---		TMCCLELLAND	2010/01/14		
		ANGULAR ± 1/2°		APPROVED BY	DATE		
		DRAFT WHERE APPLICABLE MUST REMAIN WITHIN DIMENSIONS		MBANAKIS	2010/01/14		
D4	REV	SEE SHEET 1		MATERIAL NO.	DOCUMENT NO.	SHEET NO.	
		SIZE		SD-76866-001		5 OF 6	
THIS DRAWING CONTAINS INFORMATION THAT IS PROPRIETARY TO MOLEX INCORPORATED AND SHOULD NOT BE USED WITHOUT WRITTEN PERMISSION							



### CIRCUIT IDENTIFICATION

<b>SEE SHEET 1</b> EC NO: UCP2015-5060 DRWNKCALLAGHAN 2015/06/01 CHKD:TMCCLELLAND 2015/06/03 APPR:TMCCLELL 2015/06/18	DESCRIPTION REV <b>D4</b>	QUALITY SYMBOLS =0 =0	GENERAL TOLERANCES (UNLESS SPECIFIED) <table border="1"> <thead> <tr> <th></th> <th>mm</th> <th>INCH</th> </tr> </thead> <tbody> <tr> <td>4 PLACES</td> <td>± .005</td> <td>± .0002</td> </tr> <tr> <td>3 PLACES</td> <td>± .008</td> <td>± .0003</td> </tr> <tr> <td>2 PLACES</td> <td>± 0.13</td> <td>± .005</td> </tr> <tr> <td>1 PLACE</td> <td>± 0.25</td> <td>± .010</td> </tr> </tbody> </table>		mm	INCH	4 PLACES	± .005	± .0002	3 PLACES	± .008	± .0003	2 PLACES	± 0.13	± .005	1 PLACE	± 0.25	± .010	DIMENSION STYLE <b>MM ONLY</b> DRAWN BY DATE KLANG 2009/03/04 CHECKED BY DATE TMCCLELLAND 2010/01/14 APPROVED BY DATE MBANAK I S 2010/01/14	SCALE <b>8:1</b> DESIGN UNITS <b>METRIC</b> THIRD ANGLE PROJECTION	TITLE <b>IPASS PLUS HD 1X1 ASSEMBLY</b>
			mm	INCH																	
		4 PLACES	± .005	± .0002																	
		3 PLACES	± .008	± .0003																	
2 PLACES	± 0.13	± .005																			
1 PLACE	± 0.25	± .010																			
ANGULAR ±1/2°		DRAFT WHERE APPLICABLE MUST REMAIN WITHIN DIMENSIONS		MATERIAL NO. <b>SEE SHEET 1</b> DOCUMENT NO. <b>SD-76866-001</b>		SHEET NO. <b>6 OF 6</b>															
THIS DRAWING CONTAINS INFORMATION THAT IS PROPRIETARY TO MOLEX INCORPORATED AND SHOULD NOT BE USED WITHOUT WRITTEN PERMISSION																					