



Chipsmall Limited consists of a professional team with an average of over 10 year of expertise in the distribution of electronic components. Based in Hongkong, we have already established firm and mutual-benefit business relationships with customers from,Europe,America and south Asia,supplying obsolete and hard-to-find components to meet their specific needs.

With the principle of “Quality Parts,Customers Priority,Honest Operation,and Considerate Service”,our business mainly focus on the distribution of electronic components. Line cards we deal with include Microchip,ALPS,ROHM,Xilinx,Pulse,ON,Everlight and Freescale. Main products comprise IC,Modules,Potentiometer,IC Socket,Relay,Connector.Our parts cover such applications as commercial,industrial, and automotives areas.

We are looking forward to setting up business relationship with you and hope to provide you with the best service and solution. Let us make a better world for our industry!



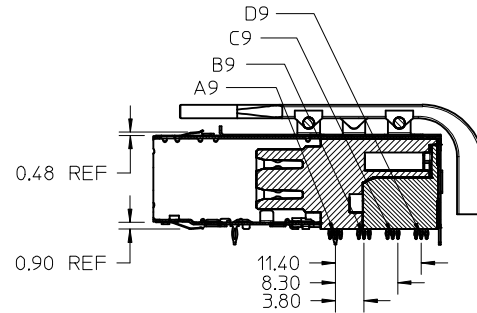
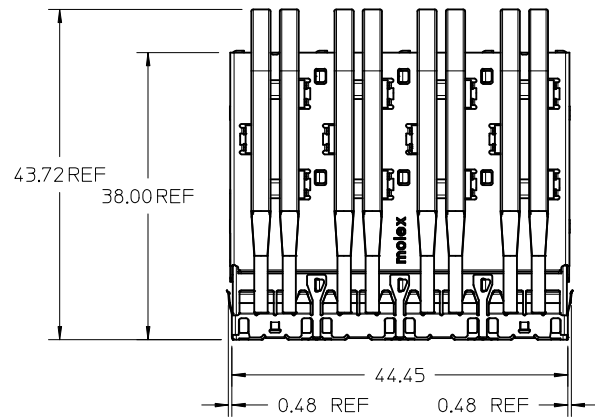
## Contact us

Tel: +86-755-8981 8866 Fax: +86-755-8427 6832

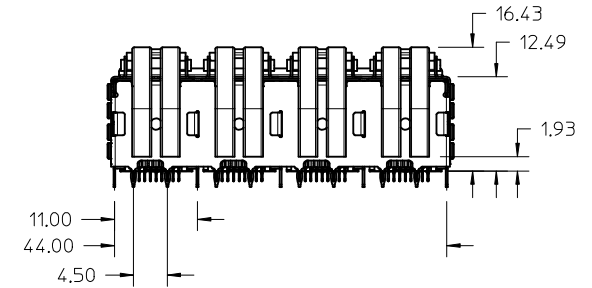
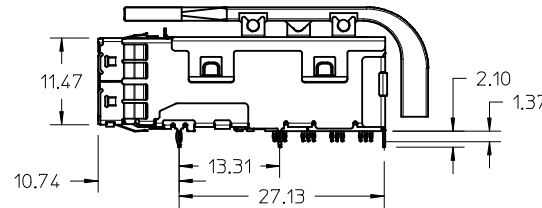
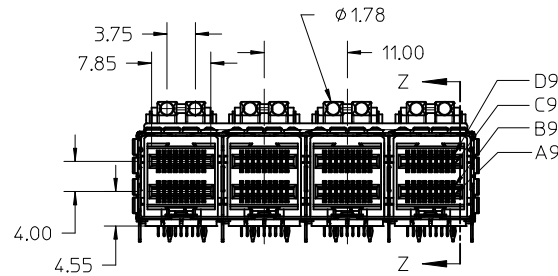
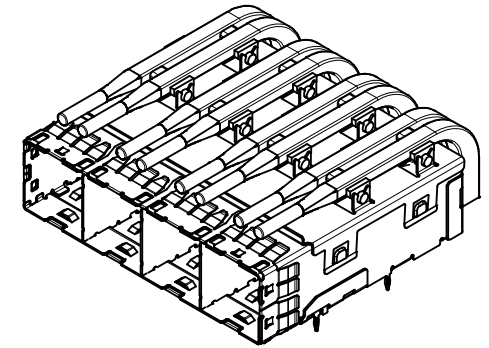
Email & Skype: [info@chipsmall.com](mailto:info@chipsmall.com) Web: [www.chipsmall.com](http://www.chipsmall.com)

Address: A1208, Overseas Decoration Building, #122 Zhenhua RD., Futian, Shenzhen, China





SECTION Z-Z



NOTES:

1. MATERIALS:

CONNECTOR HOUSING: HIGH TEMPERATURE THERMOPLASTIC  
GLASS FILLED, UL 94V-0  
EMI CAGE: NICKEL SILVER ALLOY  
EMI FINGERS: COPPER ALLOY  
TERMINALS: COPPER ALLOY  
LIGHT PIPES: HALOGEN FREE, CLEAR POLYCARBONATE

2. FINISHES:

EMI FINGERS: 0.50µM MIN NICKEL  
CONTACT AREA: 0.76µM MIN GOLD OVER 2.54µM MIN NICKEL  
TAIL AREA: 0.76µM-1.52µM TIN OVER 2.54µM MIN NICKEL

3. PRODUCT SPECIFICATION: PS-76866-001

4. PACKAGING SPECIFICATION: PK-76866-002

CONNECTORS WILL BE IN ONE BOX  
LIGHT PIPE ASSEMBLIES WILL BE IN ONE BOX  
BOTH BOXES WILL BE IN A MASTER CARTON

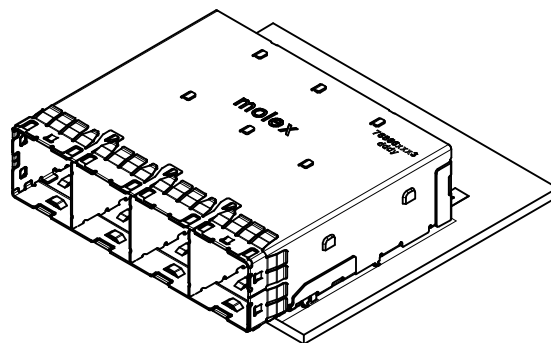
5. MATES WITH: MOLEX CABLE SERIES 111068 & 111073

6. RECOMMENDED MOUNTING HARDWARE: REFER TO APPLICATION SPECIFICATION

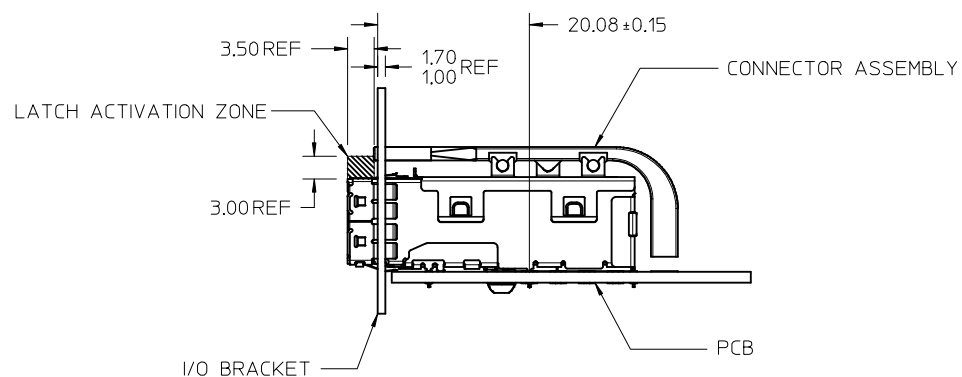
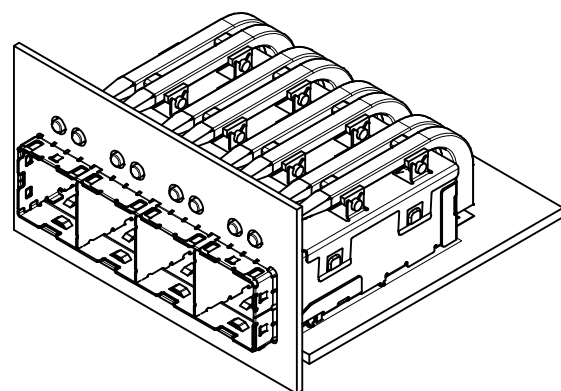
AS-76866-001

7. PLUG MODULE PCB LAYOUT REFER TO SD-76866-9900

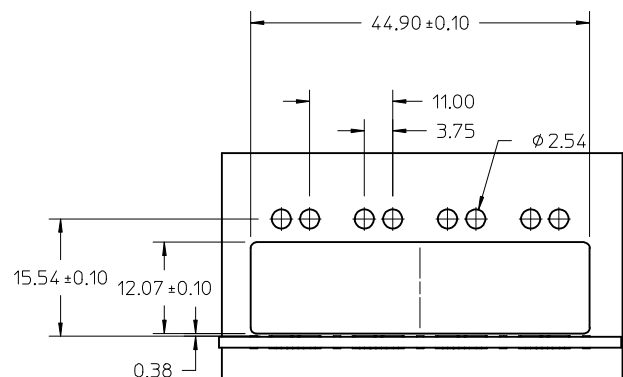
REV'D NOTES EC NO: UCP2015-5060 DRWN:KALLAGHAN 2015/06/01 CHKD:TMCLELLAND 2015/06/03 APPR: TMCLELL 2015/06/18	DESCRIPTION	QUALITY SYMBOLS <div>▽=0</div> <div>▽=0</div> <div>▽=0</div>	GENERAL TOLERANCES (UNLESS SPECIFIED)		DIMENSION STYLE MM ONLY		SCALE 2:1	DESIGN UNITS METRIC	THIRD ANGLE PROJECTION	TITLE IPASS PLUS HD 1X4 ASSEMBLY LIGHT PIPE <b>molex</b>		
				mm	INCH	DRAWN BY KLANG		DATE 2009/05/01			DOCUMENT NO. SD-76866-023	SHEET NO. 1 OF 5
			4 PLACES	± ---	± ---	CHECKED BY		DATE				
			3 PLACES	± ---	± ---	TMCLELLAND		2013/10/16				
			2 PLACES	± 0.13	± ---	APPROVED BY		DATE				
			1 PLACE	± 0.25	± ---	MBANAKIS		2010/01/14				
			0 PLACE	±	±	MATERIAL NO.		76866-0123				
			ANGULAR ±1/2°									
			DRAFT WHERE APPLICABLE									
			MUST REMAIN WITHIN DIMENSIONS									
D6	REV				SIZE C		THIS DRAWING CONTAINS INFORMATION THAT IS PROPRIETARY TO MOLEX INCORPORATED AND SHOULD NOT BE USED WITHOUT WRITTEN PERMISSION					



AS APPLIED TO PCB



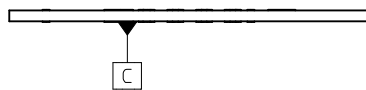
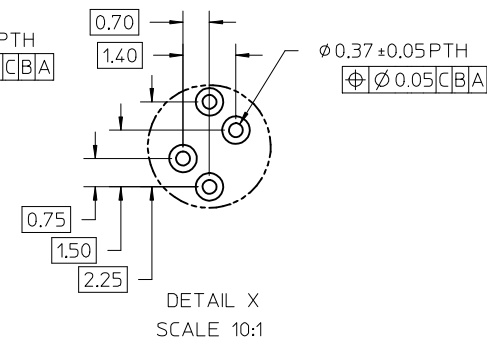
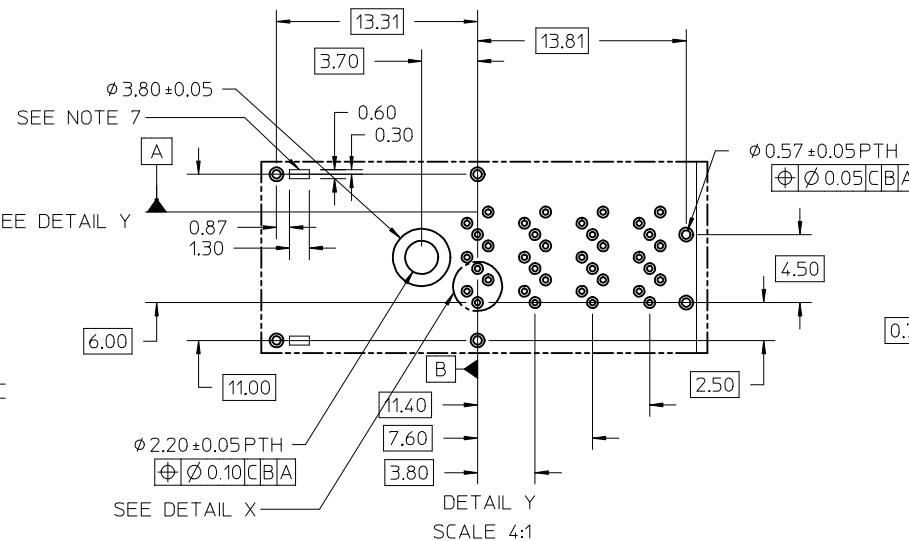
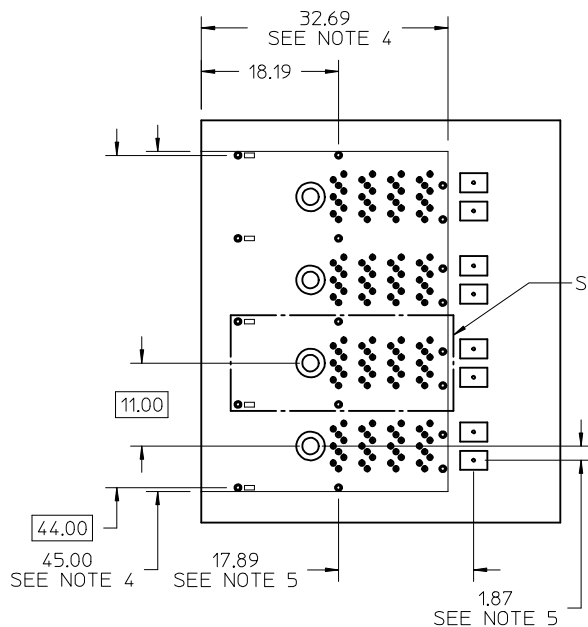
ASSEMBLED VIEW



I/O BRACKET CUT OUT  
(BRACKET NOT SUPPLIED)

SEE SHEET 1 EC NO: UCP2015-5060 DRAWN: KLANG 2015/06/01 CHKD: TMCLELLAND 2015/06/03 APPR: TMCLELL 2015/06/18  D6	DESCRIPTION REV	QUALITY SYMBOLS  ▽=0 ▽=0 ▽=0	GENERAL TOLERANCES (UNLESS SPECIFIED)		DIMENSION STYLE MM ONLY		SCALE 2:1	DESIGN UNITS METRIC	THIRD ANGLE PROJECTION				
					DRAWN BY DATE KLANG 2009/05/01		TITLE IPASS PLUS HD 1X4 ASSEMBLY LIGHT PIPE						
					CHECKED BY DATE TMCLELLAND 2013/10/16		molex						
					APPROVED BY DATE MBANAKIS 2010/01/14								
					MATERIAL NO.							DOCUMENT NO.	
					ANGULAR ±1/2°		SEE SHEET 1		SD-76866-023				
					DRAFT WHERE APPLICABLE MUST REMAIN WITHIN DIMENSIONS		SIZE		THIS DRAWING CONTAINS INFORMATION THAT IS PROPRIETARY TO MOLEX INCORPORATED AND SHOULD NOT BE USED WITHOUT WRITTEN PERMISSION				

# RECOMMENDED FOOTPRINT



## NOTES:

1. RECOMMENDED DRILL SIZE AND ANNULAR RING FOR 0.37 $\phi$  FINISHED PTH - REFER TO APPLICATION SPECIFICATION AS-76866-001
2. MINIMUM RECOMMENDED SPACING: 47.00MM
3. MINIMUM PCB THICKNESS: 1.57MM
4. CONNECTOR KEEPOUT AREA
5. LOCATION OF LED CENTER LINE
6. RECOMMENDED DRILL SIZE AND ANNULAR RING FOR 0.57 $\phi$  FINISHED PTH - REFER TO APPLICATION SPECIFICATION AS-76866-001
7. CAGE STAND OFF AREA, NO TRACES ON SURFACE OF PCB IN THESE AREAS




SEE SHEET 1 EC NO: UCP2015-5060 DRAWN BY: DRINKKALLAGHAN 2015/06/01 CHKD: TMCLELLAND 2015/06/03 APPR: TMCLELL 2015/06/18	DESCRIPTION	QUALITY SYMBOLS <div><div>▽=0</div><div>▽=0</div><div>▽=0</div></div>	GENERAL TOLERANCES (UNLESS SPECIFIED)		DIMENSION STYLE MM ONLY		SCALE 2:1	DESIGN UNITS METRIC	<div><div></div><div></div></div> THIRD ANGLE PROJECTION		
				mm	INCH	DRAWN BY KLANG		DATE 2009/05/01		TITLE	
			4 PLACES	± ---	± ---	CHECKED BY TMCLELLAND		DATE 2013/10/16		IPASS PLUS HD 1X4 ASSEMBLY LIGHT PIPE <b>molex</b>	
			3 PLACES	± ---	± ---	APPROVED BY MBANAKIS		DATE 2010/01/14			
			2 PLACES	± 0.13	± ---	MATERIAL NO.		DOCUMENT NO.			
			1 PLACE	± 0.25	± ---	SEE SHEET 1		SD-76866-023			
			0 PLACE	±	±	SIZE C THIS DRAWING CONTAINS INFORMATION THAT IS PROPRIETARY TO MOLEX INCORPORATED AND SHOULD NOT BE USED WITHOUT WRITTEN PERMISSION		SHEET NO. 3 OF 5			
						ANGULAR ±1/2°					
						DRAFT WHERE APPLICABLE MUST REMAIN WITHIN DIMENSIONS					
	REV										

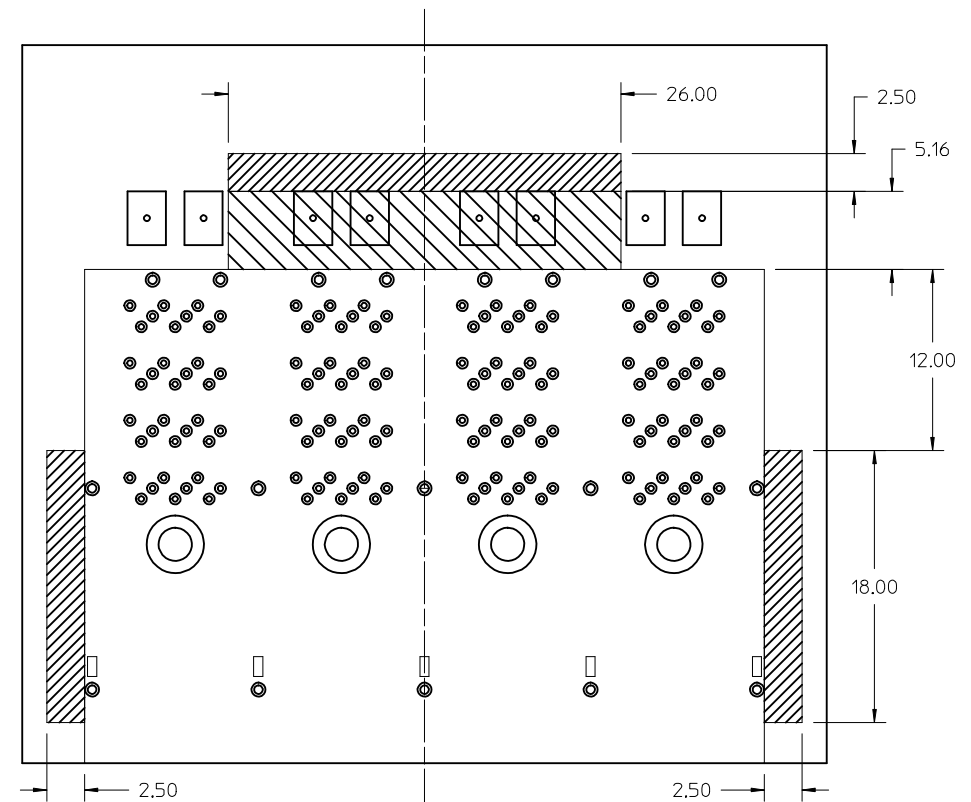
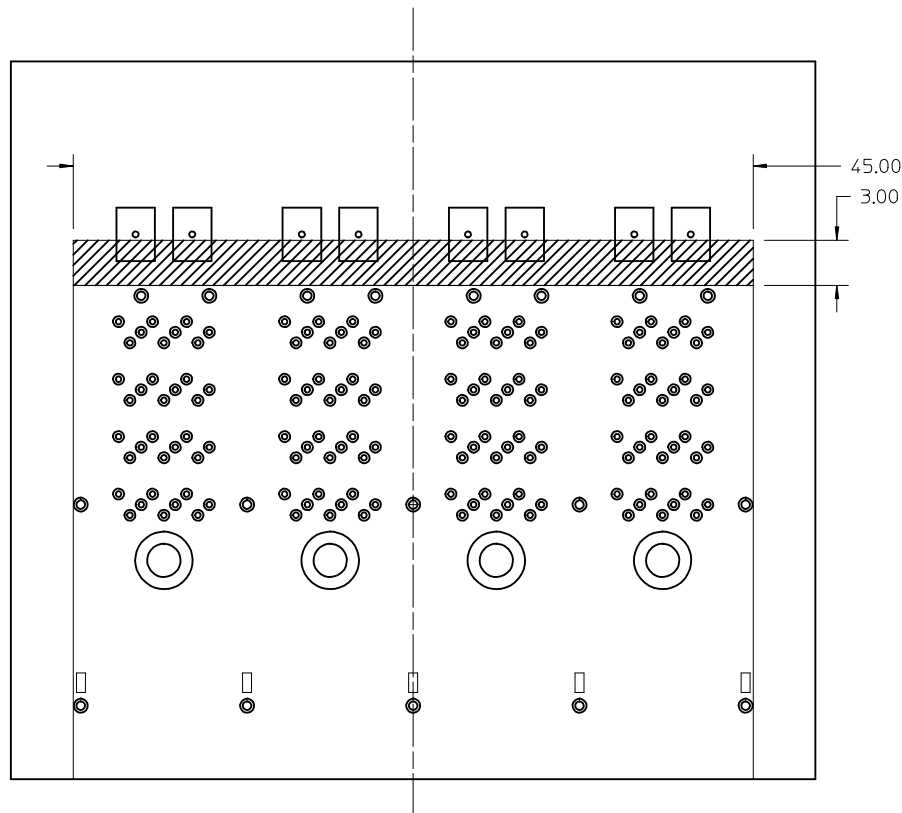
## RECOMMENDED TOOLING KEEP OUT AREAS

RECOMMENDED INSERTION TOOL  
KEEP OUT AREA

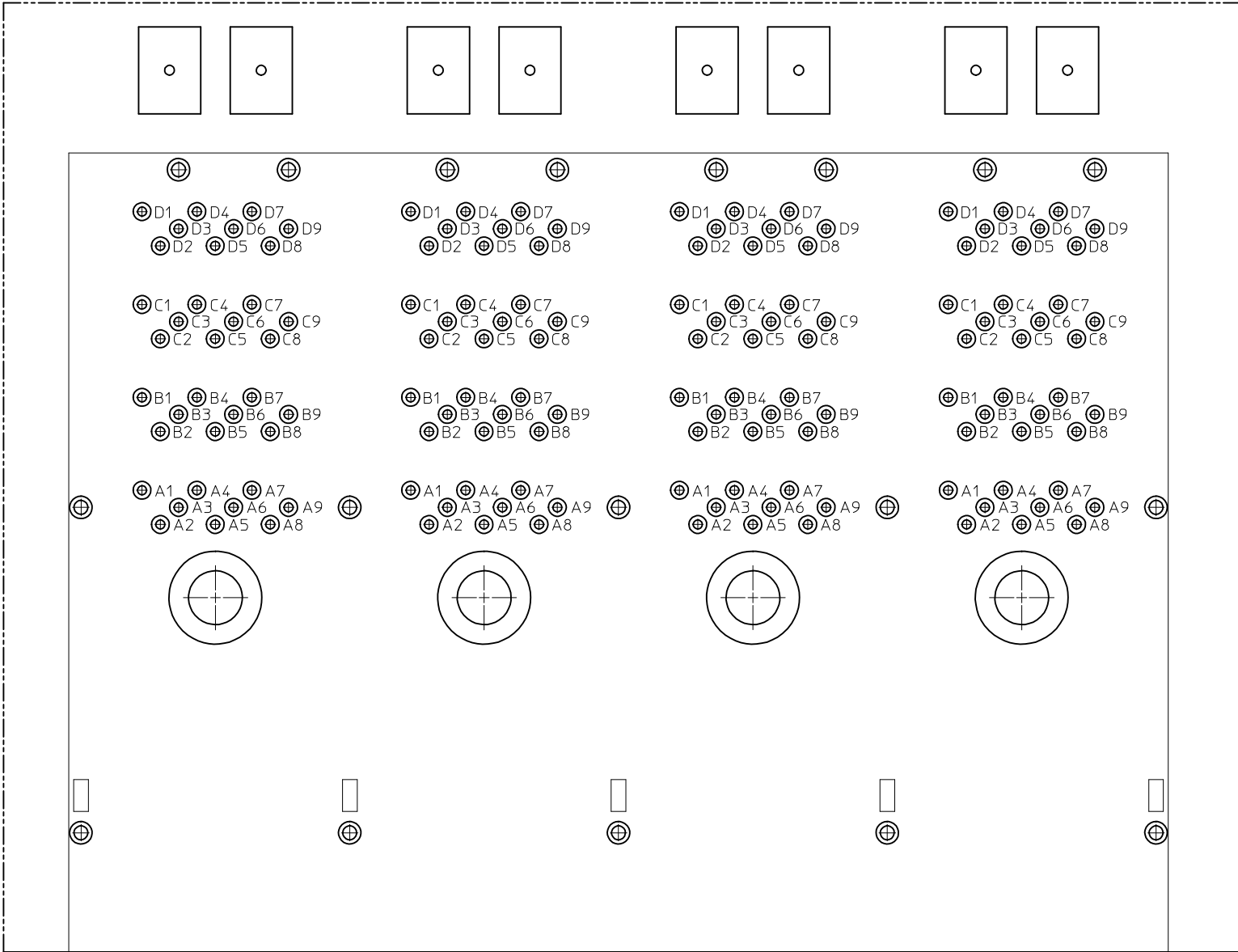
 NO COMPONENTS IN THIS AREA  
MORE THAN 7.50 mm TALL

RECOMMENDED EXTRACTION TOOL  
KEEP OUT AREA

 NO COMPONENTS IN THESE AREAS  
 NO COMPONENTS IN THIS AREA  
 MORE THAN 5.00 mm TALL



SEE SHEET 1 EC NO: UCP2015-5060 DRWNK:CALLAGHAN 2015/06/01 CHKD:TMCCLELLAND 2015/06/03 APPR: TMCCLELL 2015/06/18 D6	DESCRIPTION	QUALITY SYMBOLS <div>▽=0</div> <div>▽=0</div> <div>▽=0</div>	GENERAL TOLERANCES (UNLESS SPECIFIED)		DIMENSION STYLE MM ONLY		SCALE 4:1	DESIGN UNITS METRIC	THIRD ANGLE PROJECTION <div>⊙</div> <div>◁</div>				
					DRAWN BY DATE KLANG 2009/05/01		TITLE IPASS PLUS HD 1X4 ASSEMBLY LIGHT PIPE <div>molex</div>						
					CHECKED BY DATE TMCCLELLAND 2013/10/16								
					APPROVED BY DATE MBANAKIS 2010/01/14		DOCUMENT NO. SD-76866-023						
					MATERIAL NO.							SHEET NO. 4 OF 5	
			ANGULAR ±1/2°		SEE SHEET 1								
			DRAFT WHERE APPLICABLE MUST REMAIN WITHIN DIMENSIONS										
			SIZE		THIS DRAWING CONTAINS INFORMATION THAT IS PROPRIETARY TO MOLEX INCORPORATED AND SHOULD NOT BE USED WITHOUT WRITTEN PERMISSION								
			REV										



Partial1  
SCALE 8:1

CIRCUIT IDENTIFICATION

SEE SHEET 1 EC NO: UCP2015-5060 DRWN:KCALLAGHAN 2015/06/01 CHKD:TMCCLELLAND 2015/06/03 APPR:TMCCLELL 2015/06/18  D6	DESCRIPTION	QUALITY SYMBOLS	GENERAL TOLERANCES (UNLESS SPECIFIED)		DIMENSION STYLE MM ONLY		SCALE 8:1	DESIGN UNITS METRIC	THIRD ANGLE PROJECTION
		 =0  =0  =0		mm	INCH	DRAWN BY KLANG	DATE 2009/05/01	TITLE  IPASS PLUS HD 1X4 ASSEMBLY LIGHT PIPE  <b>molex</b>	
			4 PLACES	± ---	± ---	CHECKED BY TMCCLELLAND	DATE 2013/10/16		
			3 PLACES	± ---	± ---	APPROVED BY MBANAKIS	DATE 2010/01/14		
			2 PLACES	± 0.13	± ---	MATERIAL NO. SEE SHEET 1			
			1 PLACE	± 0.25	± ---	DOCUMENT NO. SD-76866-023			
			0 PLACE	±	±	SHEET NO. 5 OF 5			
			ANGULAR ±1/2°						
		DRAFT WHERE APPLICABLE MUST REMAIN WITHIN DIMENSIONS							
		REV		THIS DRAWING CONTAINS INFORMATION THAT IS PROPRIETARY TO MOLEX INCORPORATED AND SHOULD NOT BE USED WITHOUT WRITTEN PERMISSION					