



Chipsmall Limited consists of a professional team with an average of over 10 year of expertise in the distribution of electronic components. Based in Hongkong, we have already established firm and mutual-benefit business relationships with customers from,Europe,America and south Asia,supplying obsolete and hard-to-find components to meet their specific needs.

With the principle of “Quality Parts,Customers Priority,Honest Operation,and Considerate Service”,our business mainly focus on the distribution of electronic components. Line cards we deal with include Microchip,ALPS,ROHM,Xilinx,Pulse,ON,Everlight and Freescale. Main products comprise IC,Modules,Potentiometer,IC Socket,Relay,Connector.Our parts cover such applications as commercial,industrial, and automotives areas.

We are looking forward to setting up business relationship with you and hope to provide you with the best service and solution. Let us make a better world for our industry!



Contact us

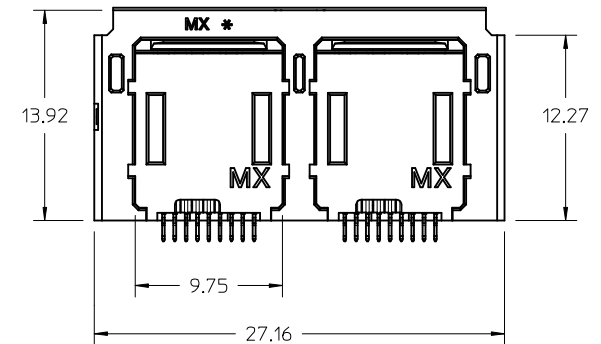
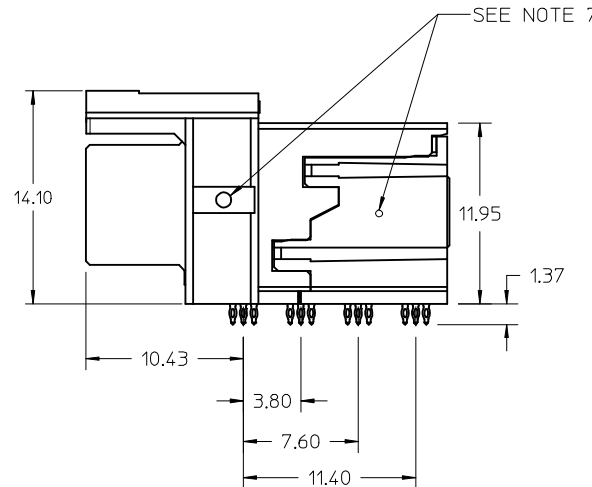
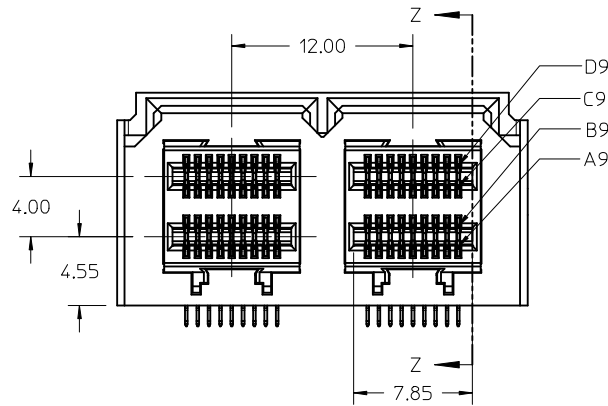
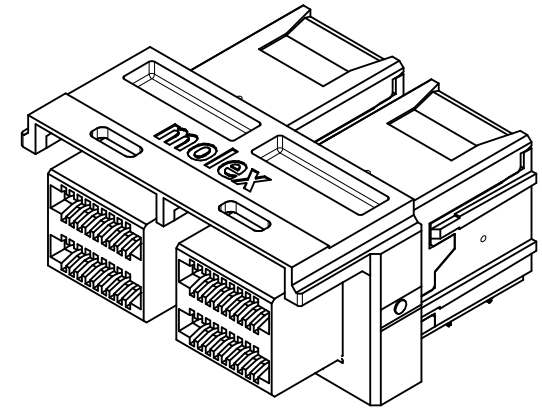
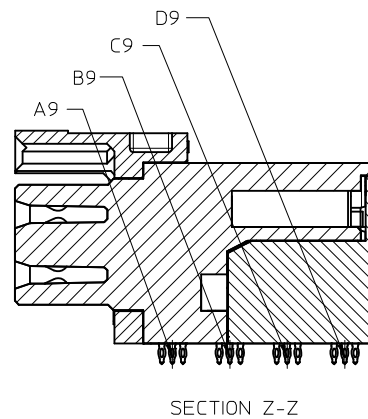
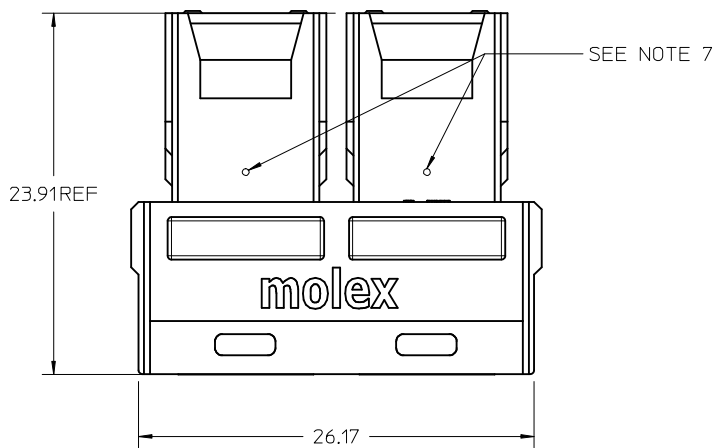
Tel: +86-755-8981 8866 Fax: +86-755-8427 6832

Email & Skype: info@chipsmall.com Web: www.chipsmall.com

Address: A1208, Overseas Decoration Building, #122 Zhenhua RD., Futian, Shenzhen, China

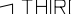


13 12 11 10 9 8 7 6 5 4 3 2 1



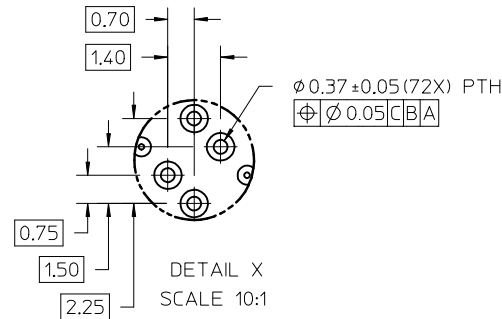
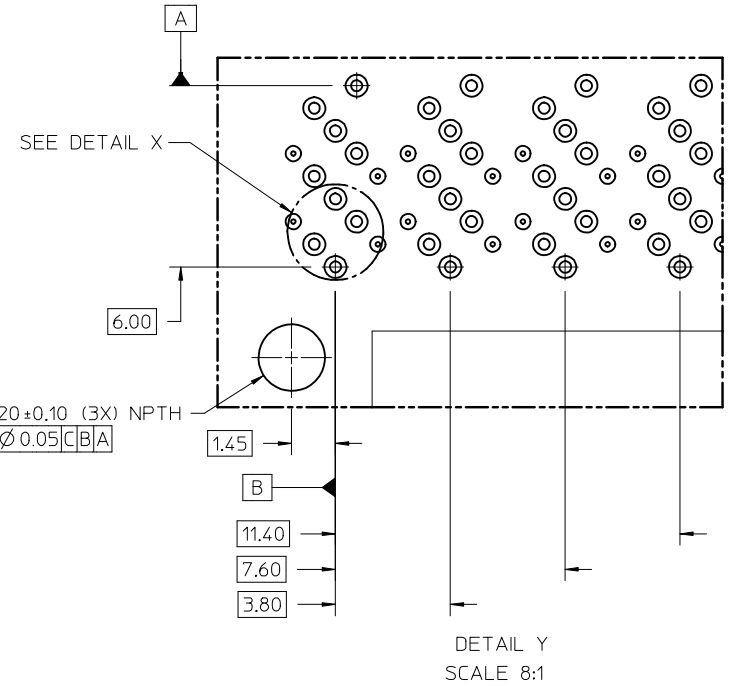
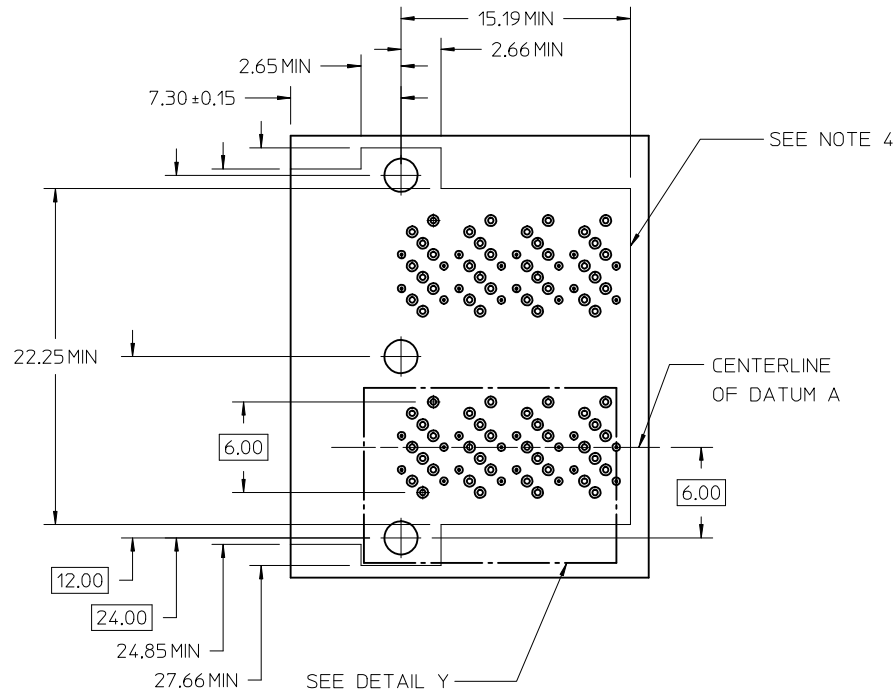
- NOTES:
1. MATERIALS:
CONNECTOR HOUSING: HIGH TEMPERATURE THERMOPLASTIC
GLASS FILLED, UL 94V-0
TERMINALS: COPPER ALLOY
2. FINISHES:
CONTACT AREA: 0.76μM MIN GOLD OVER 2.54μM MIN NICKEL
TAIL AREA:
OPTION 1: 0.76μM-1.52μM TIN/LEAD (90/10) OVER 2.54μM MIN NICKEL
OPTION 2: 0.76μM-1.52μM TIN (LEAD FREE) OVER 2.54μM MIN NICKEL
3. PRODUCT SPECIFICATION: PS-76867-001
4. PACKAGING SPECIFICATION: PK-76867-001
5. MATES WITH: MOLEX CABLE SERIES 100171, 100189, 100190 & 100191
6. MOUNTING HARDWARE NOT SUPPLIED, REFER TO APPLICATION SPECIFICATION AS-76867-001
7. APPROXIMATE MOLDING GATE LOCATION
8. PLUG MODULE PCB LAYOUT REFER TO SD-76866-9900

PLATING OPT.	MATERIAL NO.
OPTION 1	76867-0002
OPTION 2	76867-0012

REV'D GATE LOCATION EC NO: UCP2015-4516 DRWN: TMCLELL 2015/04/28 CHKD: TMCLELL AND 2015/04/28 APPR: TMCLELL 2015/04/28	DESCRIPTION	QUALITY SYMBOLS <div>▽=0</div> <div>▽=0</div> <div>▽=0</div>	GENERAL TOLERANCES (UNLESS SPECIFIED)		DIMENSION STYLE MM ONLY		SCALE 4:1	DESIGN UNITS METRIC	 THIRD ANGLE PROJECTION				
				mm	INCH	DRAWN BY KLANG	DATE 2009/05/15	TITLE IPASS PLUS HD 1X2 ASSEMBLY INTERNAL					
			4 PLACES ± --- ± ---	3 PLACES ± --- ± .005	CHECKED BY	DATE							
			2 PLACES ± 0.13 ± .010	1 PLACE ± 0.25 ± ---	APPROVED BY MBANAKIS		DATE 2010/11/17		molex				
			0 PLACE ±	MATERIAL NO.		DOCUMENT NO.		SHEET NO.					
			ANGULAR ±1/2°		SEE CHART		SD-76867-002						1 OF 3
			DRAFT WHERE APPLICABLE MUST REMAIN WITHIN DIMENSIONS		SIZE	THIS DRAWING CONTAINS INFORMATION THAT IS PROPRIETARY TO MOLEX INCORPORATED AND SHOULD NOT BE USED WITHOUT WRITTEN PERMISSION							

12 11 10 9 8 7 6 5 4 3 2 1

RECOMMENDED FOOTPRINT

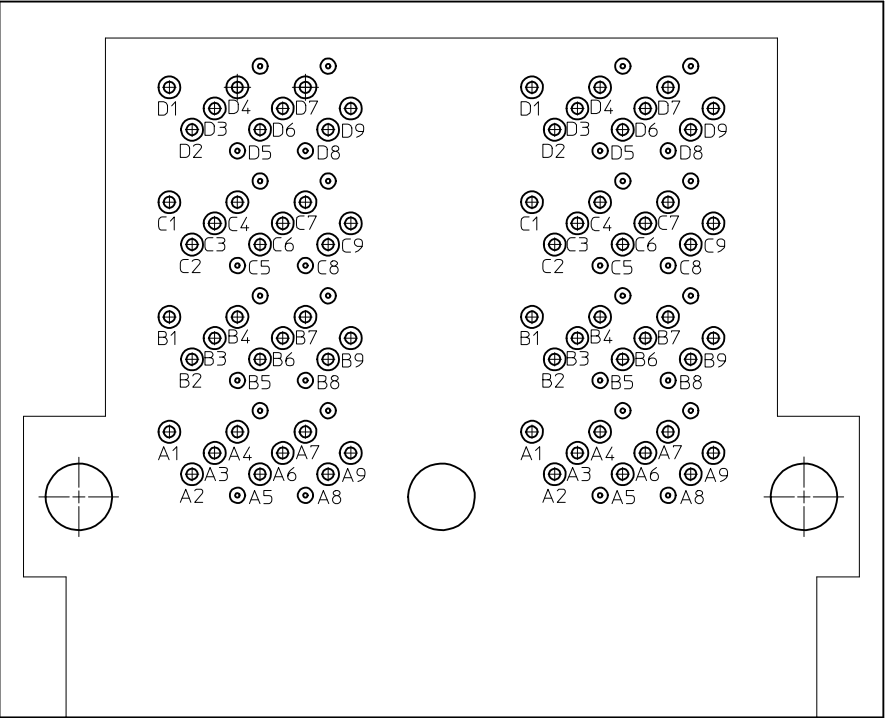


NOTES:

1. RECOMMENDED DRILL SIZE AND ANNULAR RING FOR A 0.37 ϕ FINISHED PTH - REFER TO APPLICATION SPECIFICATION AS-76867-001
2. MINIMUM RECOMMENDED SPACING: 14.00MM
3. MINIMUM PCB THICKNESS: 1.57MM
4. CONNECTOR KEEP OUT AREA

SEE SHEET 1 EC NO: UCP2015-4516 DRWN: TMCLELL 2015/04/28 CHKD: TMCLELLAND 2015/04/28 APPR: TMCLELL 2015/04/28 B10	DESCRIPTION	QUALITY SYMBOLS <div>▽=0</div> <div>▽=0</div> <div>▽=0</div>	GENERAL TOLERANCES (UNLESS SPECIFIED)		DIMENSION STYLE MM ONLY		SCALE 4:1	DESIGN UNITS METRIC	THIRD ANGLE PROJECTION	
				mm	INCH	DRAWN BY KLANG	DATE 2009/05/15	TITLE IPASS PLUS HD 1X2 ASSEMBLY INTERNAL		
			4 PLACES	± ---	± ---	CHECKED BY	DATE			
			3 PLACES	± ---	± .005	APPROVED BY MBANAKIS		DATE 2010/11/17		
			2 PLACES	± 0.13	± .010					
			1 PLACE	± 0.25	± ---	MATERIAL NO.		DOCUMENT NO.		
			0 PLACE	±	±					
			ANGULAR ±1/2°			SEE CHART		SD-76867-002		
			DRAFT WHERE APPLICABLE MUST REMAIN WITHIN DIMENSIONS							
			REV			SIZE C		THIS DRAWING CONTAINS INFORMATION THAT IS PROPRIETARY TO MOLEX INCORPORATED AND SHOULD NOT BE USED WITHOUT WRITTEN PERMISSION		
					SHEET NO. 2 OF 3					

FOOTPRINT CIRCUIT IDENTIFICATION



SEE SHEET 1 EC NO: UCP2015-4516 DRWN:TMCCLELL 2015/04/28 CHKD:TMCCLELL 2015/04/28 APPR:TMCCLELL 2015/04/28 B10	DESCRIPTION REV	QUALITY SYMBOLS <div>▽=0</div> <div>▽=0</div> <div>▽=0</div>	GENERAL TOLERANCES (UNLESS SPECIFIED)			DIMENSION STYLE MM ONLY		SCALE 8:1	DESIGN UNITS METRIC	<div>THIRD ANGLE PROJECTION</div>		
				mm	INCH	DRAWN BY KLANG	DATE 2009/05/15	TITLE IPASS PLUS HD 1X2 ASSEMBLY INTERNAL molex				
			4 PLACES	± ---	± ---	CHECKED BY	DATE					
			3 PLACES	± ---	± .005	APPROVED BY MBANAKIS		DATE 2010/11/17	DOCUMENT NO. SD-76867-002		SHEET NO. 3 OF 3	
			2 PLACES	± 0.13	± .010							
			1 PLACE	± 0.25	± ---	MATERIAL NO. SEE CHART		DRAFT WHERE APPLICABLE MUST REMAIN WITHIN DIMENSIONS				
			0 PLACE	±	±							
			ANGULAR ±1/2°			SIZE C		THIS DRAWING CONTAINS INFORMATION THAT IS PROPRIETARY TO MOLEX INCORPORATED AND SHOULD NOT BE USED WITHOUT WRITTEN PERMISSION				