



Chipsmall Limited consists of a professional team with an average of over 10 year of expertise in the distribution of electronic components. Based in Hongkong, we have already established firm and mutual-benefit business relationships with customers from,Europe,America and south Asia,supplying obsolete and hard-to-find components to meet their specific needs.

With the principle of “Quality Parts,Customers Priority,Honest Operation,and Considerate Service”,our business mainly focus on the distribution of electronic components. Line cards we deal with include Microchip,ALPS,ROHM,Xilinx,Pulse,ON,Everlight and Freescale. Main products comprise IC,Modules,Potentiometer,IC Socket,Relay,Connector.Our parts cover such applications as commercial,industrial, and automotives areas.

We are looking forward to setting up business relationship with you and hope to provide you with the best service and solution. Let us make a better world for our industry!



Contact us

Tel: +86-755-8981 8866 Fax: +86-755-8427 6832

Email & Skype: info@chipsmall.com Web: www.chipsmall.com

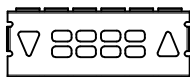
Address: A1208, Overseas Decoration Building, #122 Zhenhua RD., Futian, Shenzhen, China



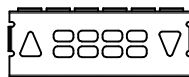
PART NUMBER	DESCRIPTION	LIGHT PIPE OPTIONS	PLATING
76870-2003	NO LIGHT PIPES	A = NONE	TIN
76870-2004	WITH LIGHT PIPES	B = DOWN / UP	TIN
76870-2005	WITH LIGHT PIPES	C = UP / DOWN	TIN



OPTION A
NO LIGHT PIPES



OPTION B
DOWN / UP



OPTION C
UP / DOWN

NOTES:

1. MATERIAL:

CAGE: NICKEL SILVER, 0.25mm THICK
EMI STRAPS: PHOS-BRONZE
AIR-VENT/LIGHT PIPE HOUSINGS: DIECAST ALLOY
LIGHT PIPES: POLYCARBONATE (OPTIONAL)
CONNECTOR HOUSING: HIGH TEMPERATURE THERMOPLASTIC
TERMINALS: COPPER ALLOY

2. FINISH:

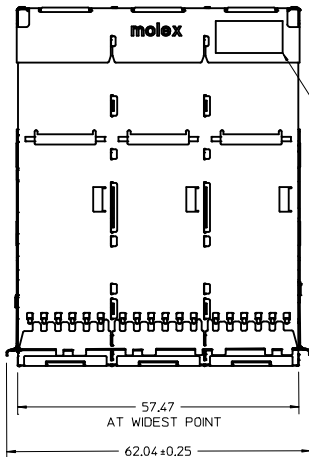
CAGE: UNPLATED
EMI STRAPS: 2.5µm NICKEL OVERALL
AIR-VENT/LIGHT PIPE HOUSINGS: NICKEL OVER COPPER
TERMINALS: CONTACT AREA:
0.76-152 µm MIN. GOLD OVER 2.5 µm MIN. NICKEL.
COMPLIANT TAIL:
TIN/LEAD: 0.7-1.5µm TIN/LEAD (90/10) OVER 1.3 µm NICKEL.
TIN: 0.7-1.5µm MIN. MATTE TIN OVER 1.3µm NICKEL.

3. PACKAGING: PRODUCT PACKAGED IN TRAYS AND CARTONS

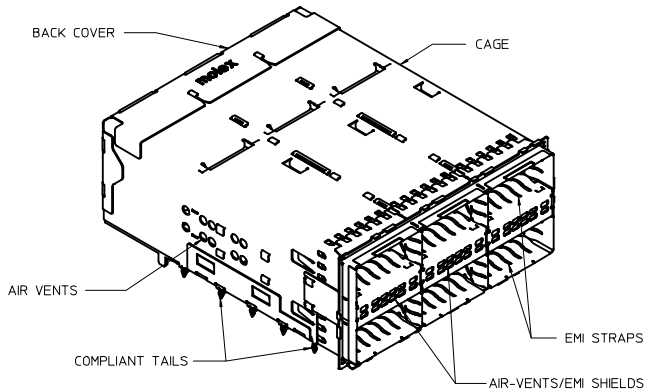
4. ALL VISIBLE EXTERIOR SURFACES TO BE CLASS 'B' OR BETTER, EXCEPT FOR THE UNDERSIDE OF THE CAGE AND SHOULD CONFORM TO THE MOLEX COSMETIC STANDARD PS-45499-002

5. CONNECTOR MATES WITH PLUG CABLE SERIES 74757 AND 74758

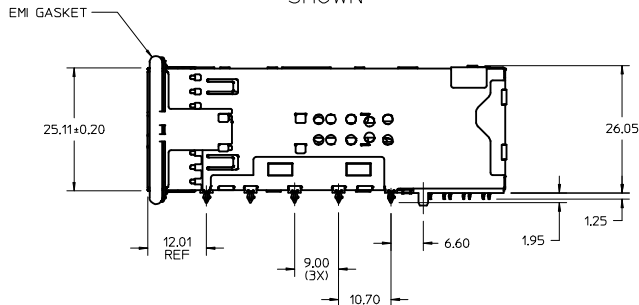
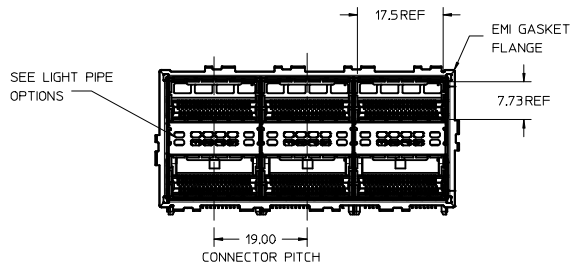
6. DATE CODE LOCATION IS SHOWN.
DATE CODE FORMAT: DDDY
DDD= DAY OF THE YEAR
Y= YEAR



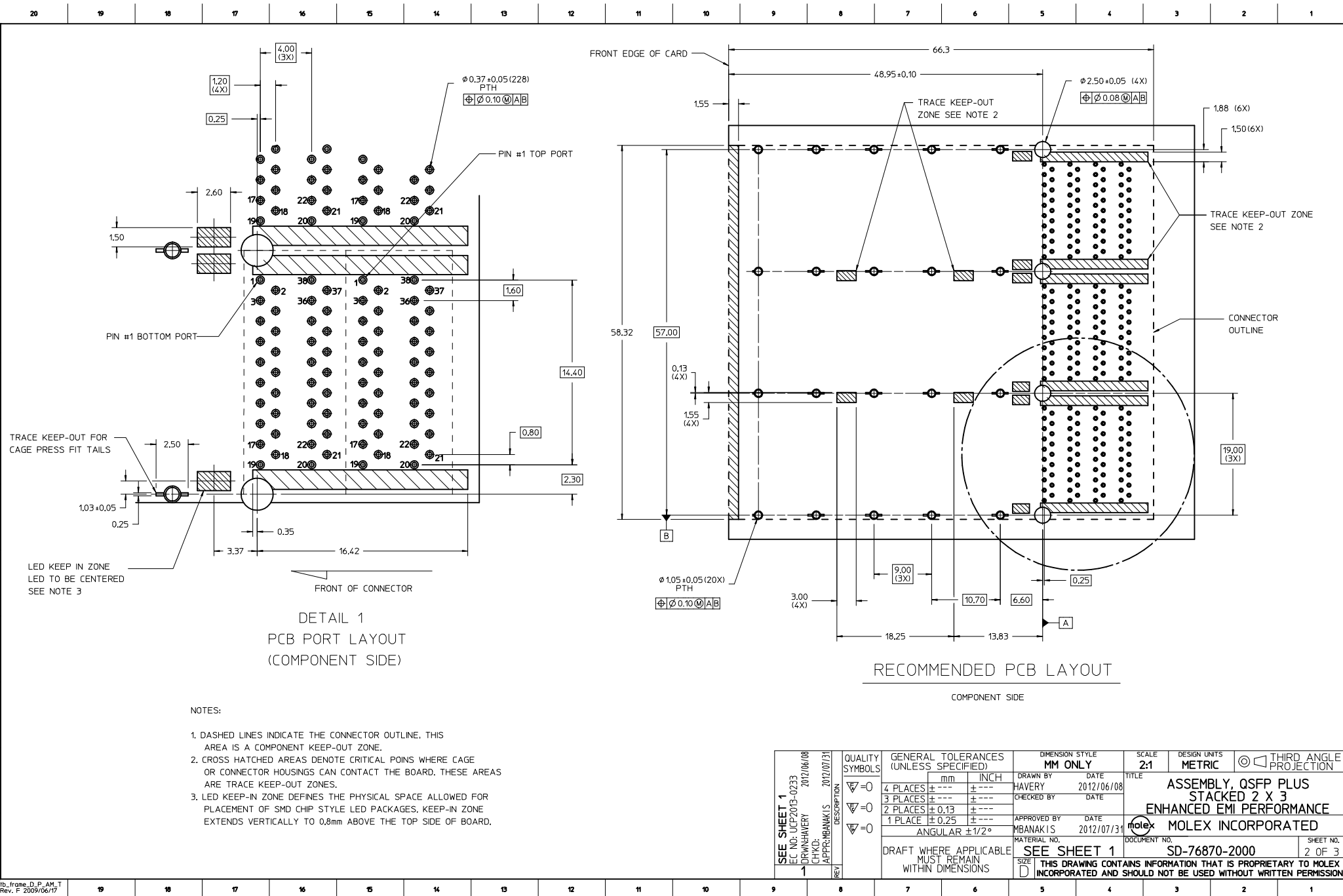
DATE CODE
LOCATION
SEE NOTE 6

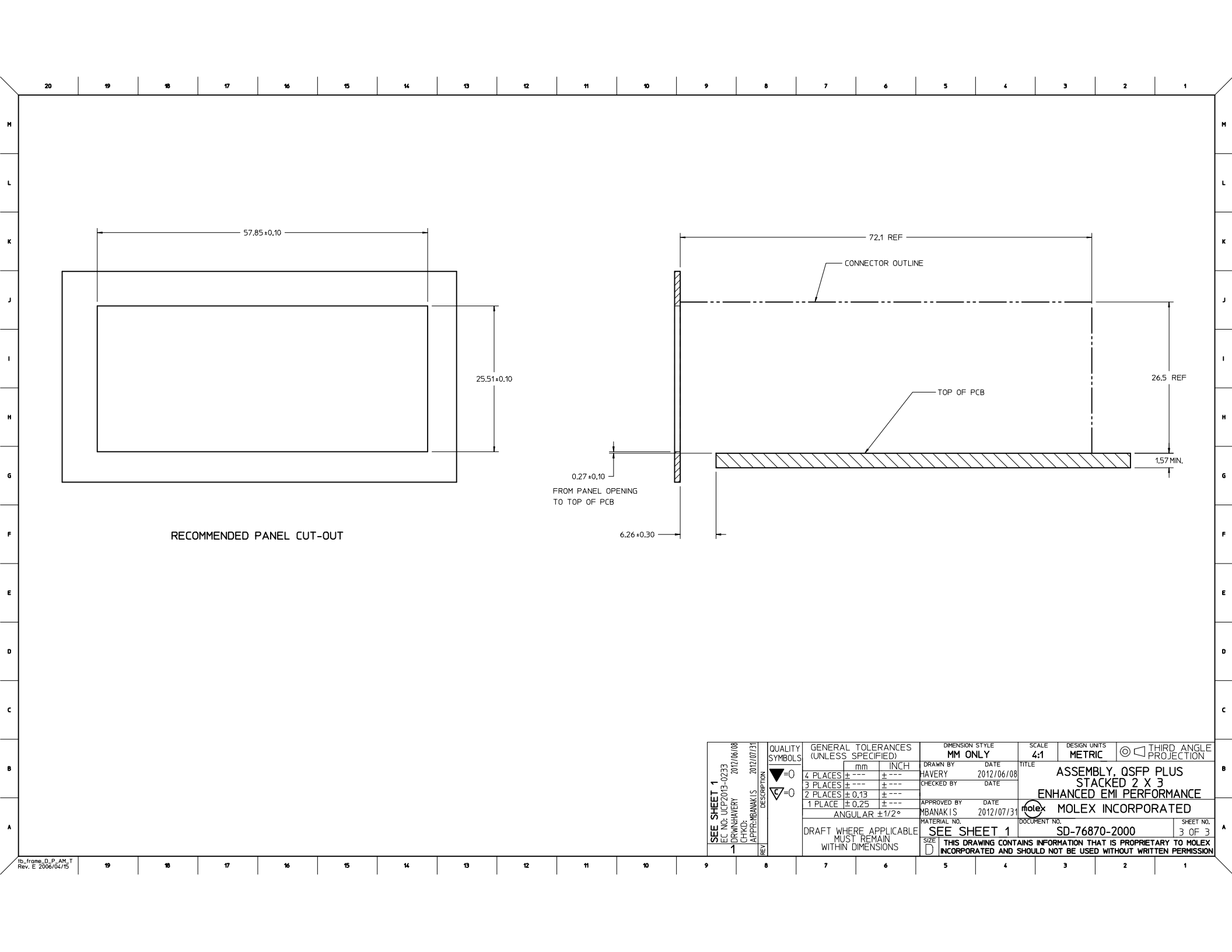


PART NUMBER
76870-0001/-0003
SHOWN



DEFINE LED KEEP-IN IEC NO: UCP2013-0233 DRAWN BY CHYO APPR: MBANKIS 2012/06/08 2012/07/31	QUALITY SYMBOLS ▽=0 ▽=0	GENERAL TOLERANCES (UNLESS SPECIFIED)		DIMENSION STYLE MM ONLY		SCALE 2:1	DESIGN UNITS METRIC	THIRD ANGLE PROJECTION	ASSEMBLY, QSFP PLUS STACKED 2 X 3 ENHANCED EMI PERFORMANCE MOLEX INCORPORATED DOCUMENT NO. SD-76870-2000 SHEET NO. 1 OF 3		
		4 PLACES	±	mm	±	INCH	DRAWN BY HAVERY	DATE 2012/06/08		MOLEX	
		3 PLACES	±	±	±	CHECKED BY	DATE				
		2 PLACES	±	0.13	±	APPROVED BY MBANKIS	DATE 2012/07/31				
		1 PLACE	±	0.25	±	MATERIAL NO.	DOCUMENT NO.				
		ANGULAR ±1/2°		SEE CHART							
		DRAFT WHERE APPLICABLE MUST REMAIN WITHIN DIMENSIONS									
		REV	THIS DRAWING CONTAINS INFORMATION THAT IS PROPRIETARY TO MOLEX INCORPORATED AND SHOULD NOT BE USED WITHOUT WRITTEN PERMISSION								





RECOMMENDED PANEL CUT-OUT

SEE SHEET 1 EC NO: UCP2013-0233 DRAWN BY CHYO: APPR:MBANKIS 2012/06/08 2012/07/31	QUALITY SYMBOLS ▽=0 ▽=0	GENERAL TOLERANCES (UNLESS SPECIFIED)		DIMENSION STYLE MM ONLY		SCALE 4:1	DESIGN UNITS METRIC	THIRD ANGLE PROJECTION	
				mm	INCH				
		4 PLACES	±	---	±	---			
		3 PLACES	±	---	±	---			
		2 PLACES	±	0.13	±	---			
		1 PLACE	±	0.25	±	---			
		ANGULAR		±1/2°					
		DRAFT WHERE APPLICABLE MUST REMAIN WITHIN DIMENSIONS		SEE SHEET 1		DOCUMENT NO. SD-76870-2000		SHEET NO. 3 OF 3	
		APPROVED BY MBANKIS 2012/07/31		DATE 2012/06/08		DATE 2012/07/31		DATE 2012/07/31	
		DRAWN BY HAVERY		CHECKED BY		DATE		DATE	
MATERIAL NO.		DATE		DATE		DATE			
SIZE D		THIS DRAWING CONTAINS INFORMATION THAT IS PROPRIETARY TO MOLEX INCORPORATED AND SHOULD NOT BE USED WITHOUT WRITTEN PERMISSION							