



Chipsmall Limited consists of a professional team with an average of over 10 year of expertise in the distribution of electronic components. Based in Hongkong, we have already established firm and mutual-benefit business relationships with customers from,Europe,America and south Asia,supplying obsolete and hard-to-find components to meet their specific needs.

With the principle of “Quality Parts,Customers Priority,Honest Operation,and Considerate Service”,our business mainly focus on the distribution of electronic components. Line cards we deal with include Microchip,ALPS,ROHM,Xilinx,Pulse,ON,Everlight and Freescale. Main products comprise IC,Modules,Potentiometer,IC Socket,Relay,Connector.Our parts cover such applications as commercial,industrial, and automotives areas.

We are looking forward to setting up business relationship with you and hope to provide you with the best service and solution. Let us make a better world for our industry!



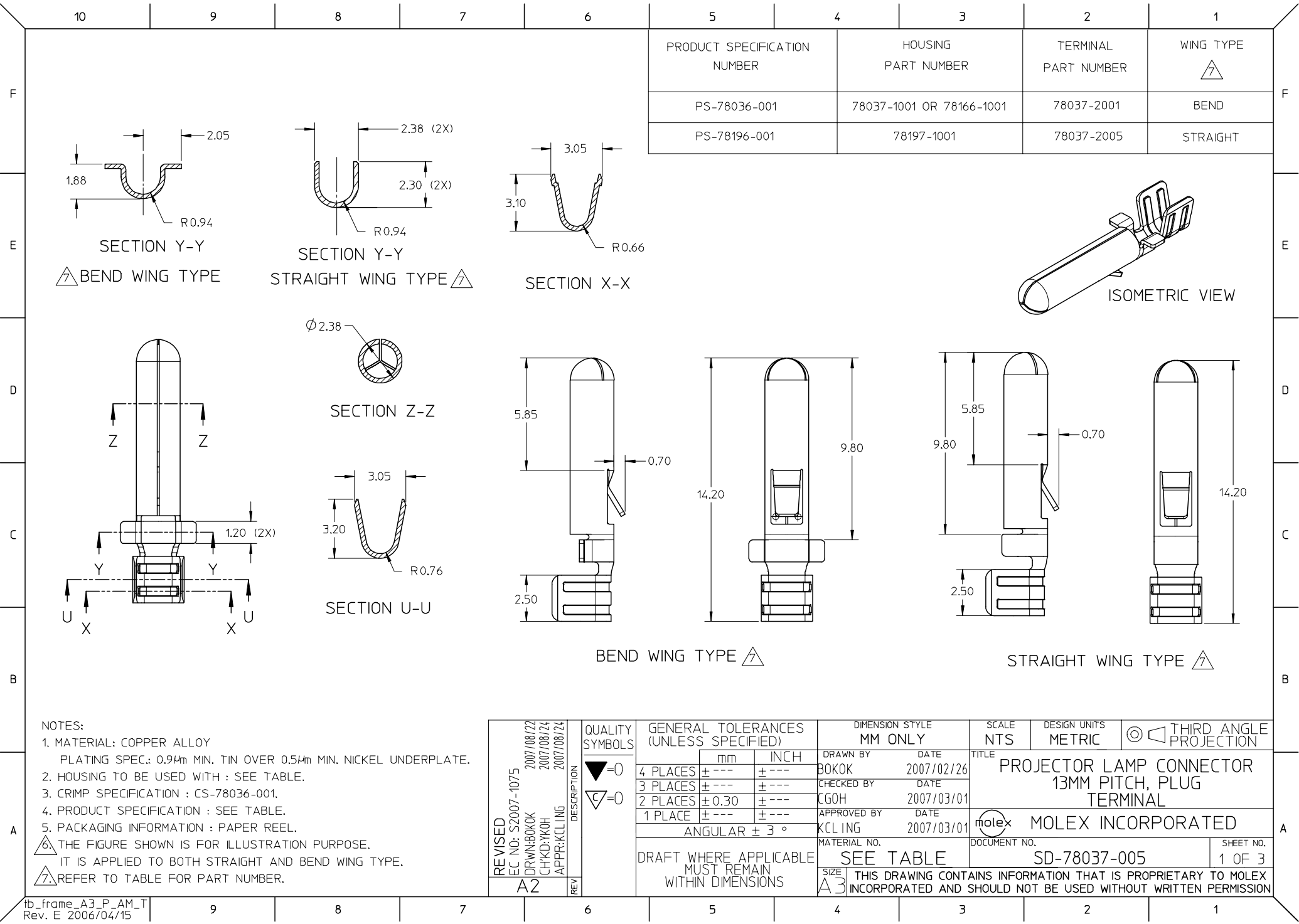
Contact us

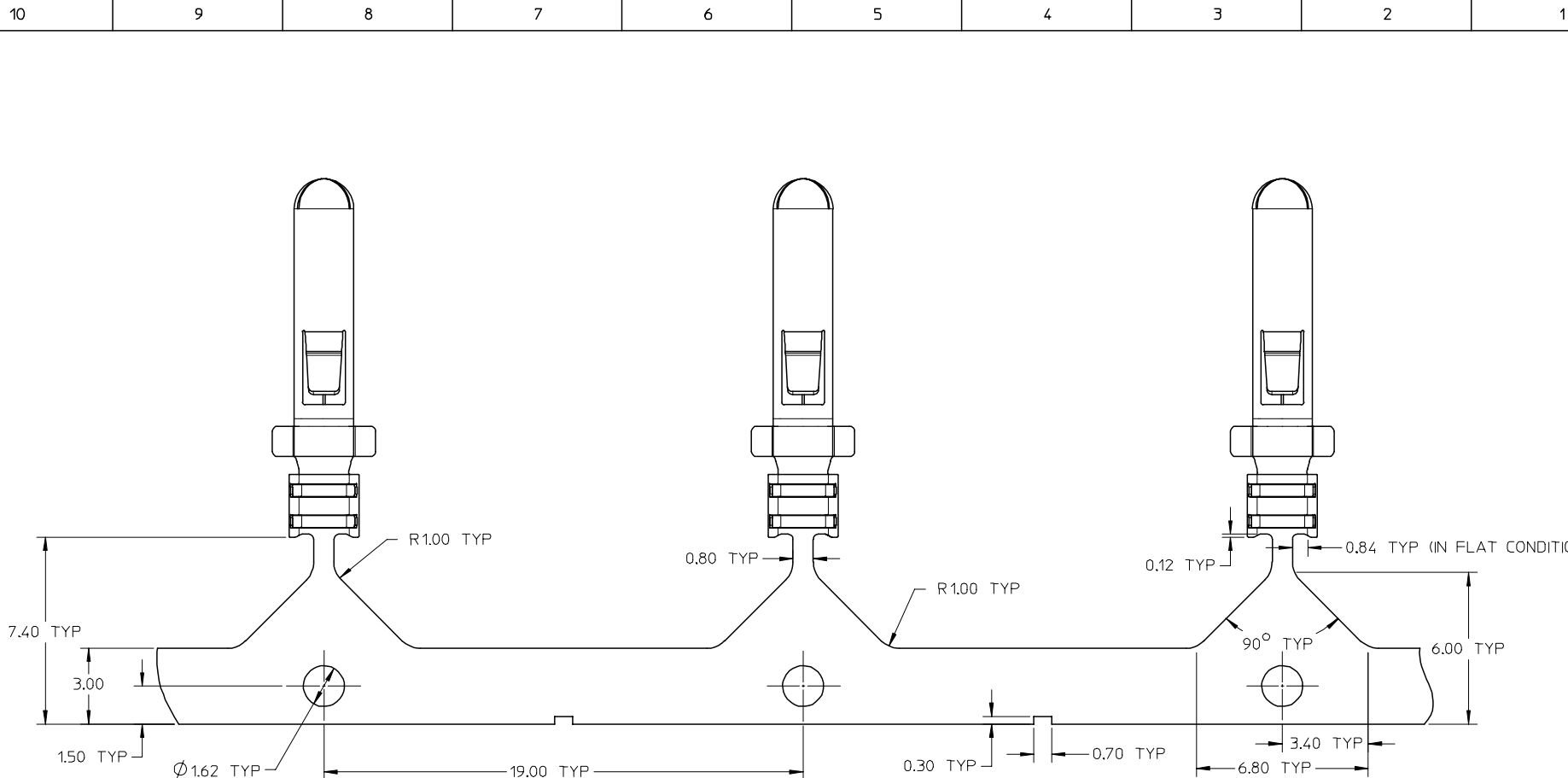
Tel: +86-755-8981 8866 Fax: +86-755-8427 6832

Email & Skype: info@chipsmall.com Web: www.chipsmall.com



Address: A1208, Overseas Decoration Building, #122 Zhenhua RD., Futian, Shenzhen, China

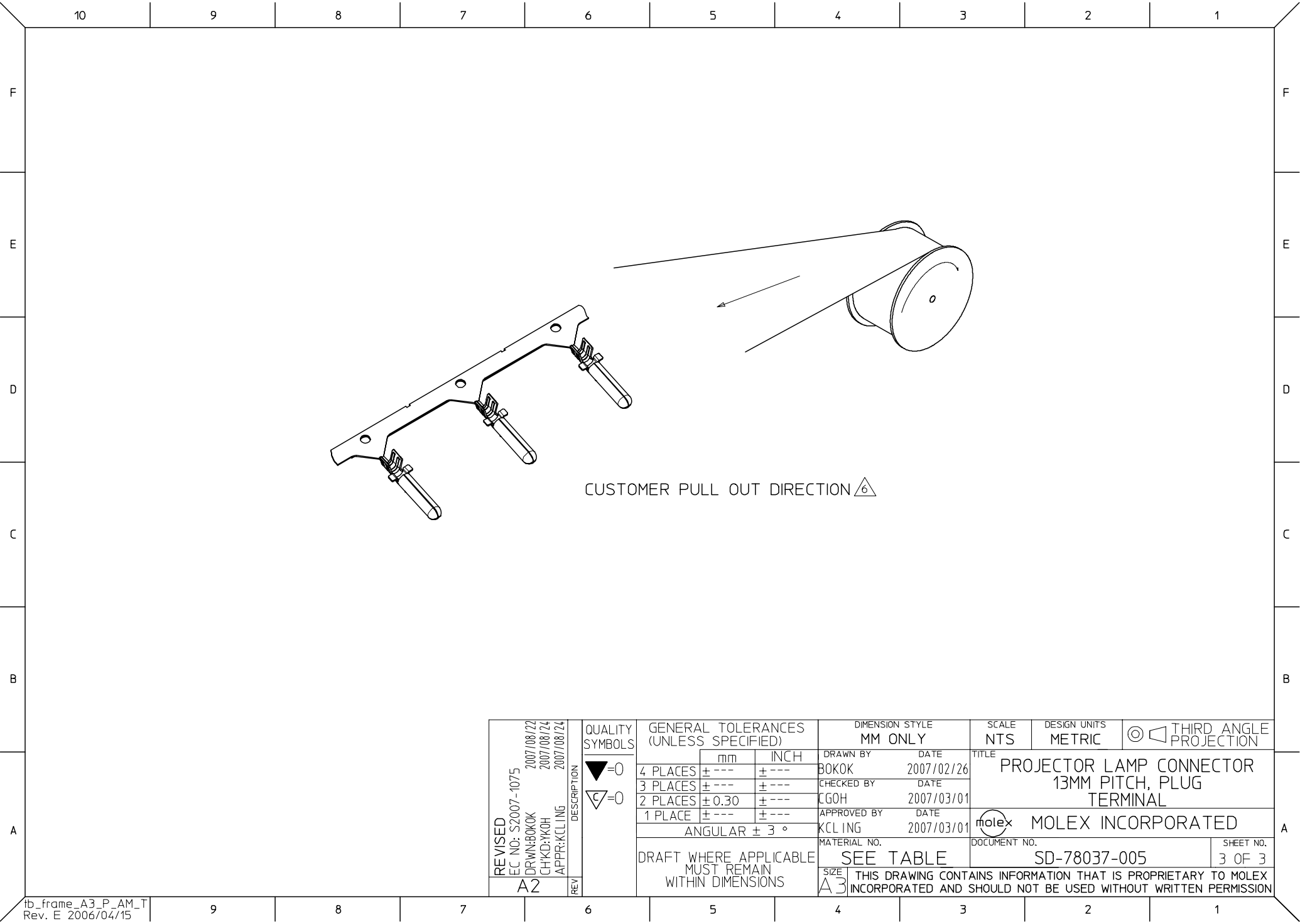








TERMINAL LAYOUT \triangle

REVISED EC NO: S2007-1075 DRWN:BOKOK CHKD:YKH APPR:KCLING A2	2007/08/22 2007/08/24 2007/08/24	DESCRIPTION	QUALITY SYMBOLS ▽=0 ◇=0	GENERAL TOLERANCES (UNLESS SPECIFIED)		DIMENSION STYLE MM ONLY		SCALE NTS	DESIGN UNITS METRIC	 THIRD ANGLE PROJECTION	
						DRAWN BY BOKOK	DATE 2007/02/26	TITLE PROJECTOR LAMP CONNECTOR 13MM PITCH, PLUG TERMINAL			
						CHECKED BY CGOH	DATE 2007/03/01				
						APPROVED BY KCLING	DATE 2007/03/01				 MOLEX INCORPORATED
				DRAFT WHERE APPLICABLE MUST REMAIN WITHIN DIMENSIONS		MATERIAL NO. SEE TABLE		DOCUMENT NO. SD-78037-005			SHEET NO. 2 OF 3
						SIZE A3		THIS DRAWING CONTAINS INFORMATION THAT IS PROPRIETARY TO MOLEX INCORPORATED AND SHOULD NOT BE USED WITHOUT WRITTEN PERMISSION			



REVISED EC NO: S2007-1075 2007/08/22 DRWN:BOKOK CHKD:YKH 2007/08/24 APPR:KCLING 2007/08/24	DESCRIPTION REV	QUALITY SYMBOLS ▽=0 ▽C=0	GENERAL TOLERANCES (UNLESS SPECIFIED)		DIMENSION STYLE MM ONLY		SCALE NTS	DESIGN UNITS METRIC	 THIRD ANGLE PROJECTION	TITLE PROJECTOR LAMP CONNECTOR 13MM PITCH, PLUG TERMINAL  MOLEX INCORPORATED		
			mm	INCH	DRAWN BY	DATE	MOLEX INCORPORATED					
			4 PLACES	± ---	± ---	BOKOK					2007/02/26	
			3 PLACES	± ---	± ---	CHECKED BY					DATE	
			2 PLACES	± 0.30	± ---	CGOH					2007/03/01	
			1 PLACE	± ---	± ---	APPROVED BY	DATE	SD-78037-005				
ANGULAR ± 3 °		KCLING	2007/03/01	SHEET NO. 3 OF 3								
DRAFT WHERE APPLICABLE MUST REMAIN WITHIN DIMENSIONS			MATERIAL NO.		DOCUMENT NO.			THIS DRAWING CONTAINS INFORMATION THAT IS PROPRIETARY TO MOLEX INCORPORATED AND SHOULD NOT BE USED WITHOUT WRITTEN PERMISSION				
A2			SIZE A3									