



Chipsmall Limited consists of a professional team with an average of over 10 year of expertise in the distribution of electronic components. Based in Hongkong, we have already established firm and mutual-benefit business relationships with customers from,Europe,America and south Asia,supplying obsolete and hard-to-find components to meet their specific needs.

With the principle of “Quality Parts,Customers Priority,Honest Operation,and Considerate Service”,our business mainly focus on the distribution of electronic components. Line cards we deal with include Microchip,ALPS,ROHM,Xilinx,Pulse,ON,Everlight and Freescale. Main products comprise IC,Modules,Potentiometer,IC Socket,Relay,Connector.Our parts cover such applications as commercial,industrial, and automotives areas.

We are looking forward to setting up business relationship with you and hope to provide you with the best service and solution. Let us make a better world for our industry!



Contact us

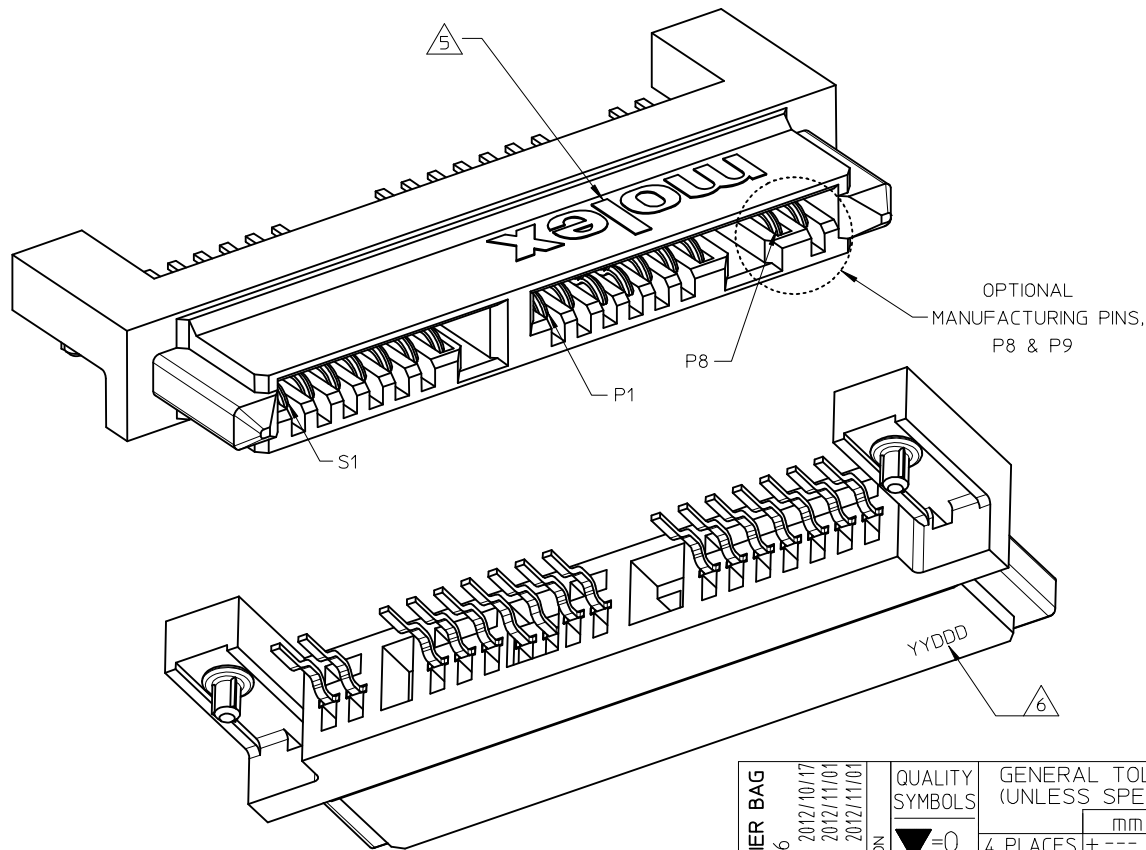
Tel: +86-755-8981 8866 Fax: +86-755-8427 6832

Email & Skype: info@chipsmall.com Web: www.chipsmall.com

Address: A1208, Overseas Decoration Building, #122 Zhenhua RD., Futian, Shenzhen, China



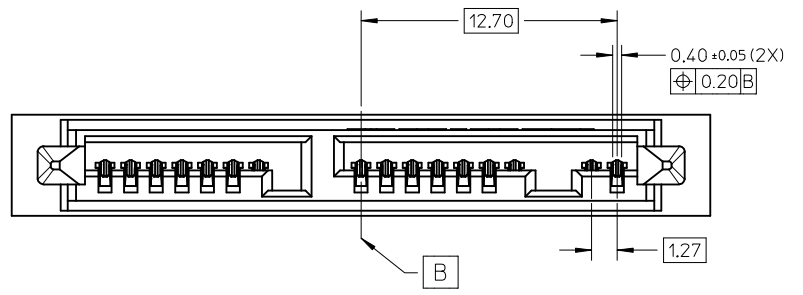
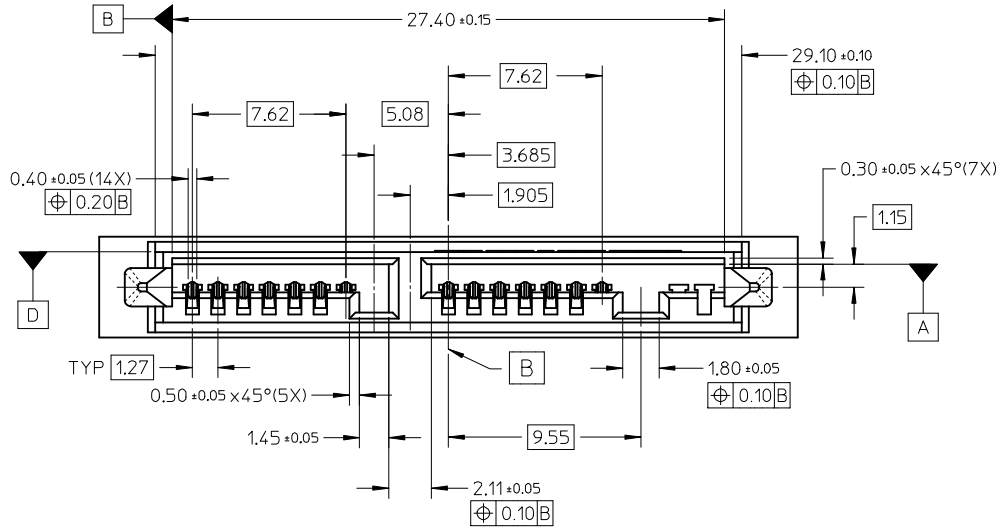
10	9	8	7	6	5	4	3	2	1
PART NUMBER	TOTAL PINS	DESCRIPTION		HOUSING MATERIAL		PACKAGING		REMARKS	
78109-0001	16	WITH OPTIONAL MANUFACTURING PINS (S1 TO S7 & P1 TO P9)		NYLON (PA) 9T, GLASS FILLED, UL 94V-0, BLACK.		TRAY		WITHOUT CAP	
78109-0012						TAPE AND REEL		WITH CAP	
78109-1001	14	WITHOUT OPTIONAL MANUFACTURING PINS (S1 TO S7 & P1 TO P7)				TRAY		WITHOUT CAP	
78109-1012						TAPE AND REEL		WITH CAP	



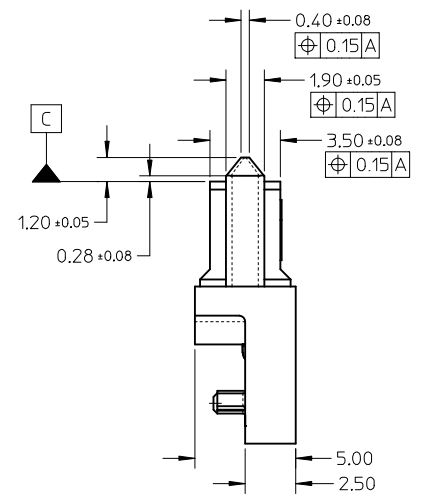
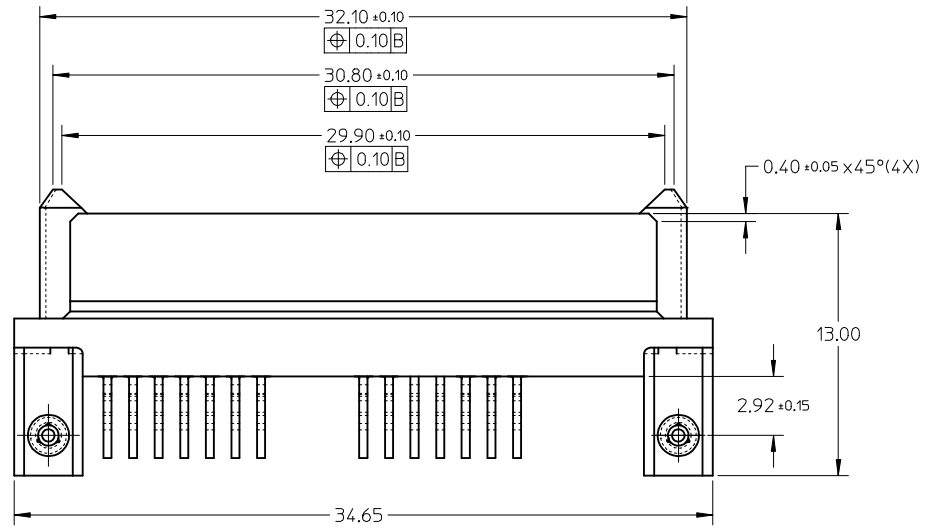
- NOTES:
- MATERIAL : SEE TABLE
TERMINAL/LOCATING PIN : COPPER ALLOY
 - PLATING :
TERMINAL : 0.764m MIN. SELECTIVE GOLD OVER
1.274m MIN. NICKEL UNDERPLATE
: 2.544m MIN. TIN OVER
1.274m MIN. NICKEL UNDERPLATE
LOCATING PIN : 3.814m MIN. TIN OVER
2.004m MIN. NICKEL UNDERPLATE
 - PRODUCT SPECIFICATION : PS-78109-001
 - MATES WITH MICRO SATA PLUG SERIES : 78283
 - MOLEX LOGO LOCATED APPROXIMATELY AS SHOWN
 - DATE CODE LOCATED APPROXIMATELY AS SHOWN
 - PACKAGING : SEE TABLE
PARTS TO BE PACKED IN MOISTURE BARRIER BAG
 - THIS PRODUCT IS COMPLIANT TO RoHS DIRECTIVE WITH THE FOLLOWING BANNED SUBSTANCES - LEAD, MERCURY, CADMIUM, HEXAVALENT CHROMIUM, POLYBROMINATED BIPHENYLS AND POLYBROMINATED DIPHENYLS ETHERS.
 - NON FUNCTIONAL CORING MAY VARY.

ADD MOIST BARRIER BAG EC NO: S2013-0226 DRWN:SKANG 2012/10/17 CHKD:ATSEE 2012/11/01 APPR:MLONG 2012/11/01	DESCRIPTION REV	QUALITY SYMBOLS	GENERAL TOLERANCES (UNLESS SPECIFIED)	DIMENSION STYLE	SCALE	DESIGN UNITS	THIRD ANGLE PROJECTION															
		$\nabla=0$ $\square=0$	<table border="1"> <thead> <tr> <th></th> <th>mm</th> <th>INCH</th> </tr> </thead> <tbody> <tr> <td>4 PLACES</td> <td>± ---</td> <td>± ---</td> </tr> <tr> <td>3 PLACES</td> <td>± ---</td> <td>± ---</td> </tr> <tr> <td>2 PLACES</td> <td>± 0.20</td> <td>± ---</td> </tr> <tr> <td>1 PLACE</td> <td>± ---</td> <td>± ---</td> </tr> </tbody> </table>		mm	INCH	4 PLACES	± ---	± ---	3 PLACES	± ---	± ---	2 PLACES	± 0.20	± ---	1 PLACE	± ---	± ---	MM ONLY	NTS	METRIC	
			mm	INCH																		
		4 PLACES	± ---	± ---																		
3 PLACES	± ---	± ---																				
2 PLACES	± 0.20	± ---																				
1 PLACE	± ---	± ---																				
	<table border="1"> <thead> <tr> <th></th> <th>DATE</th> <th>TITLE</th> </tr> </thead> <tbody> <tr> <td>DRAWN BY</td> <td>2006/06/27</td> <td rowspan="2">SERIAL ATA RECEPTACLE 1.8 INCH HDD RIGHT-ANGLE, SMT</td> </tr> <tr> <td>CHECKED BY</td> <td>2006/07/28</td> </tr> <tr> <td>APPROVED BY</td> <td>2006/07/28</td> <td rowspan="2">MOLEX INCORPORATED</td> </tr> <tr> <td>KCL ING</td> <td>2006/07/28</td> </tr> </tbody> </table>		DATE	TITLE	DRAWN BY	2006/06/27	SERIAL ATA RECEPTACLE 1.8 INCH HDD RIGHT-ANGLE, SMT	CHECKED BY	2006/07/28	APPROVED BY	2006/07/28	MOLEX INCORPORATED	KCL ING	2006/07/28	SEE TABLE	DOCUMENT NO.	SD-78109-001	SHEET NO.	1 OF 6			
	DATE	TITLE																				
DRAWN BY	2006/06/27	SERIAL ATA RECEPTACLE 1.8 INCH HDD RIGHT-ANGLE, SMT																				
CHECKED BY	2006/07/28																					
APPROVED BY	2006/07/28	MOLEX INCORPORATED																				
KCL ING	2006/07/28																					
A1	REV	DRAFT WHERE APPLICABLE MUST REMAIN WITHIN DIMENSIONS		SIZE	THIS DRAWING CONTAINS INFORMATION THAT IS PROPRIETARY TO MOLEX INCORPORATED AND SHOULD NOT BE USED WITHOUT WRITTEN PERMISSION																	

10 9 8 7 6 5 4 3 2 1



78109-0001



ADD MOIST BARRIER BAG	REV	DESCRIPTION
EC NO: S2013-0226	A1	
DRWN:SKANG		
CHKD:ATSEE		
APPR:MLONG		
2012/10/17		
2012/11/01		
2012/11/01		

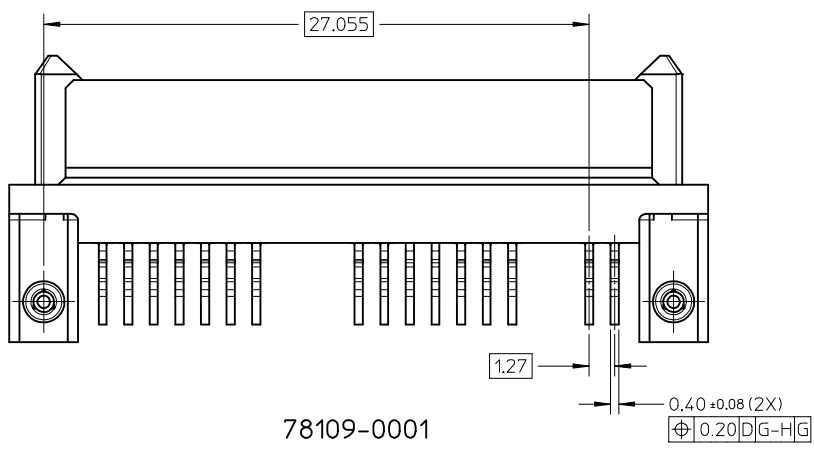
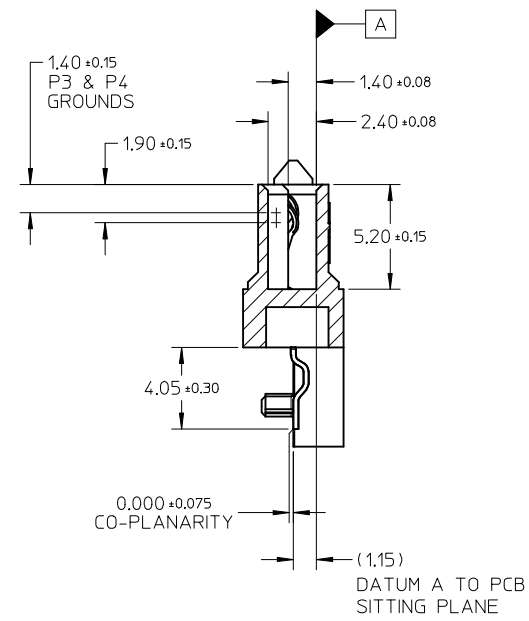
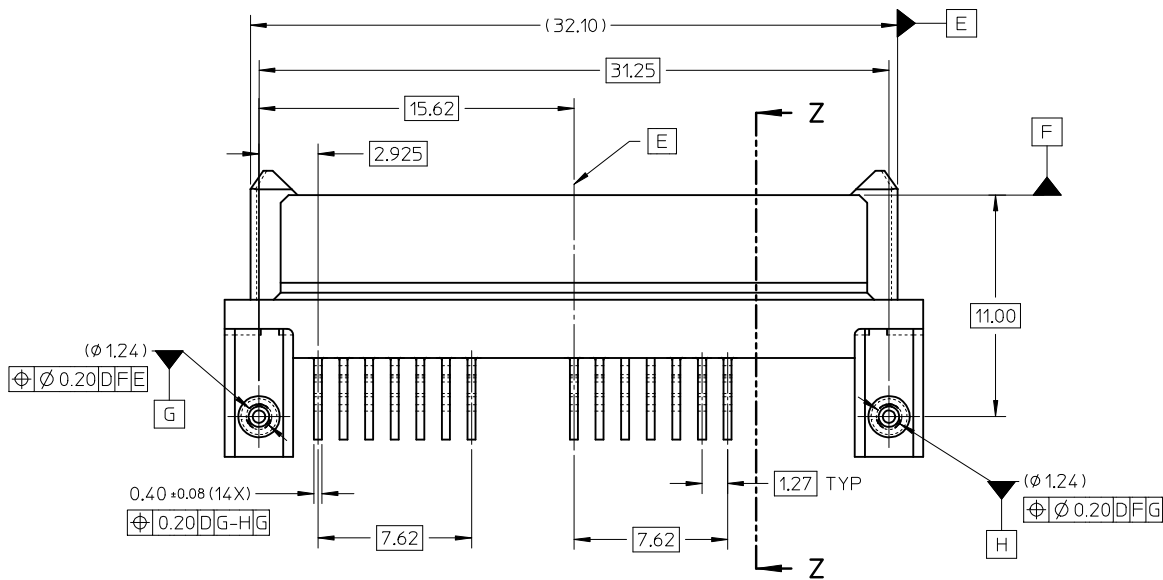
QUALITY SYMBOLS	DESCRIPTION
▽=0	
∠=0	

GENERAL TOLERANCES (UNLESS SPECIFIED)	mm	INCH
4 PLACES	± ---	± ---
3 PLACES	± ---	± ---
2 PLACES	± 0.20	± ---
1 PLACE	± ---	± ---
ANGULAR ± 3 °		
DRAFT WHERE APPLICABLE MUST REMAIN WITHIN DIMENSIONS		

DIMENSION STYLE	SCALE	DESIGN UNITS
MM ONLY	NTS	METRIC
DRAWN BY	DATE	TITLE
YKOH	2006/06/27	SERIAL ATA RECEPTACLE 1.8 INCH HDD RIGHT-ANGLE, SMT
CHECKED BY	DATE	
SHONG	2006/07/28	MOLEX INCORPORATED
APPROVED BY	DATE	
KCLING	2006/07/28	DOCUMENT NO.
MATERIAL NO.	SEE TABLE	SD-78109-001
SIZE	THIS DRAWING CONTAINS INFORMATION THAT IS PROPRIETARY TO MOLEX INCORPORATED AND SHOULD NOT BE USED WITHOUT WRITTEN PERMISSION	
A3		

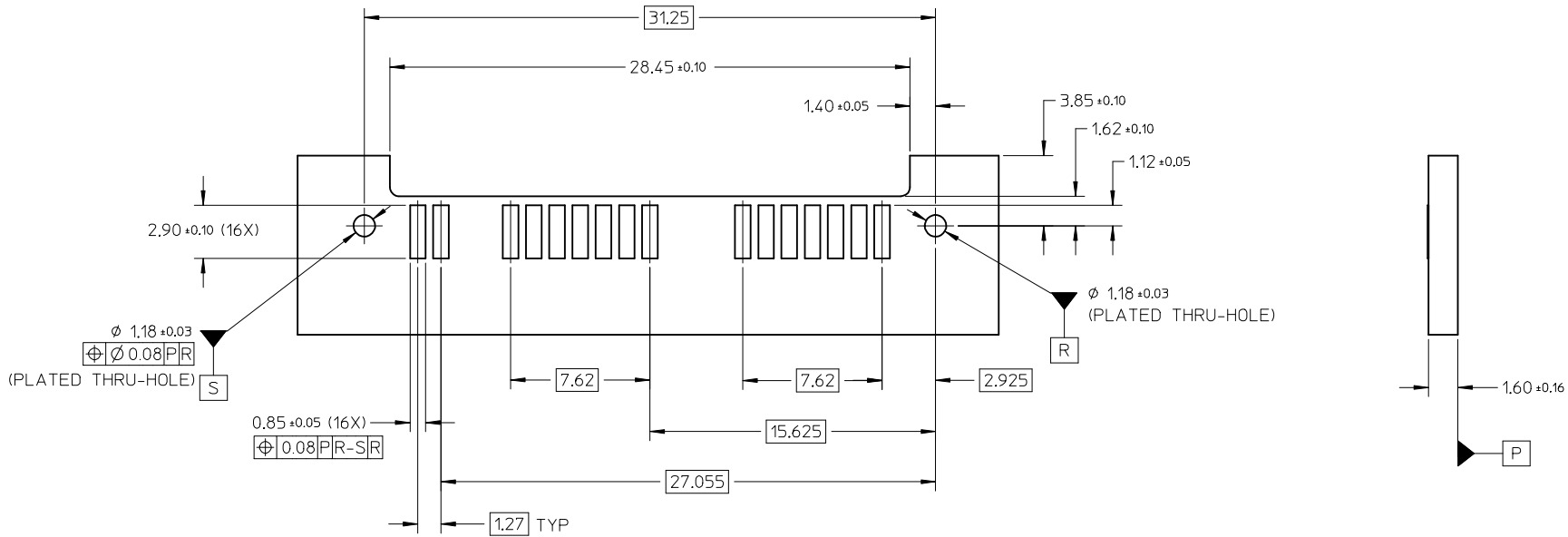
THIRD ANGLE PROJECTION	SHEET NO.
	2 OF 6

9 8 7 6 5 4 3 2 1



78109-0001

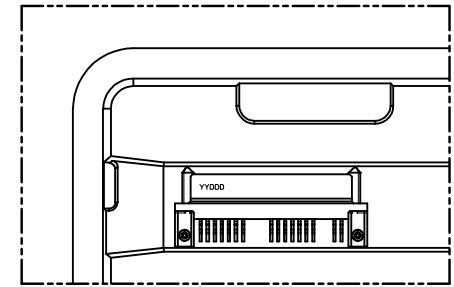
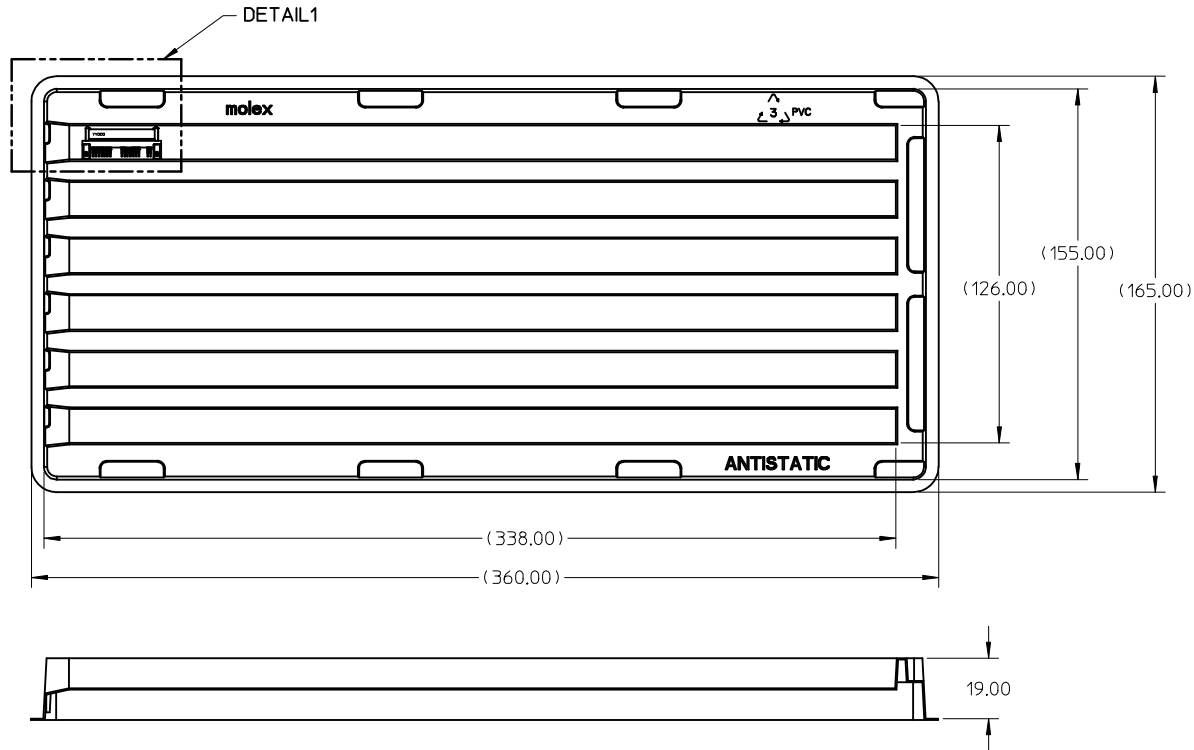
ADD MOIST BARRIER BAG EC NO: S2013-0226 DRWN:SKANG 2012/10/17 CHKD:ATSEE 2012/11/01 APPR:MLONG 2012/11/01	DESCRIPTION REV	QUALITY SYMBOLS	GENERAL TOLERANCES (UNLESS SPECIFIED)		DIMENSION STYLE MM ONLY		SCALE NTS	DESIGN UNITS METRIC	THIRD ANGLE PROJECTION	
		▽=0 ⊕=0	mm	INCH	DRAWN BY YKOH	DATE 2006/06/27	TITLE SERIAL ATA RECEPTACLE 1.8 INCH HDD RIGHT-ANGLE, SMT			
			4 PLACES ± --- ± ---	3 PLACES ± --- ± ---	CHECKED BY SHONG	DATE 2006/07/28	MOLEX INCORPORATED DOCUMENT NO. SD-78109-001 SHEET NO. 3 OF 6			
			2 PLACES ± 0.20 ± ---	1 PLACE ± --- ± ---	APPROVED BY KCL ING	DATE 2006/07/28				
		ANGULAR ± 3 °		MATERIAL NO. SEE TABLE		THIS DRAWING CONTAINS INFORMATION THAT IS PROPRIETARY TO MOLEX INCORPORATED AND SHOULD NOT BE USED WITHOUT WRITTEN PERMISSION				



RECOMMENDED PCB LAYOUT

ADD MOIST.BARRIER BAG EC NO: S2013-0226 DRWN:SKANG 2012/10/17 CHKD:ATSEE 2012/11/01 APPR:MLONG 2012/11/01	QUALITY SYMBOLS ▽=0 ◻=0	GENERAL TOLERANCES (UNLESS SPECIFIED) mm INCH 4 PLACES ± --- ± --- 3 PLACES ± --- ± --- 2 PLACES ± 0.20 ± --- 1 PLACE ± --- ± --- ANGULAR ± 3 °	DIMENSION STYLE MM ONLY DRAWN BY: YKOH DATE: 2006/06/27 CHECKED BY: SHONG DATE: 2006/07/28 APPROVED BY: KCL ING DATE: 2006/07/28 MATERIAL NO.	SCALE NTS DESIGN UNITS METRIC THIRD ANGLE PROJECTION	TITLE SERIAL ATA RECEPTACLE 1.8 INCH HDD RIGHT-ANGLE, SMT MOLEX INCORPORATED DOCUMENT NO. SD-78109-001 SHEET NO. 4 OF 6	
	DRAFT WHERE APPLICABLE MUST REMAIN WITHIN DIMENSIONS	SIZE A3	THIS DRAWING CONTAINS INFORMATION THAT IS PROPRIETARY TO MOLEX INCORPORATED AND SHOULD NOT BE USED WITHOUT WRITTEN PERMISSION			
	REV A1	DESCRIPTION				

PACKAGING INFORMATION : TRAY



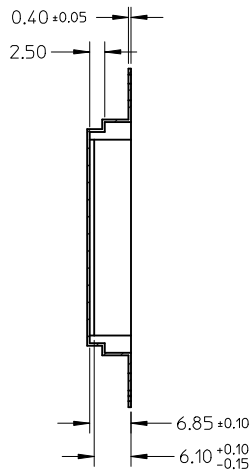
DETAIL1

NOTES:

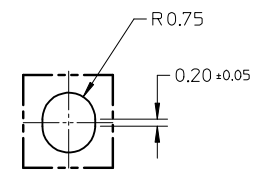
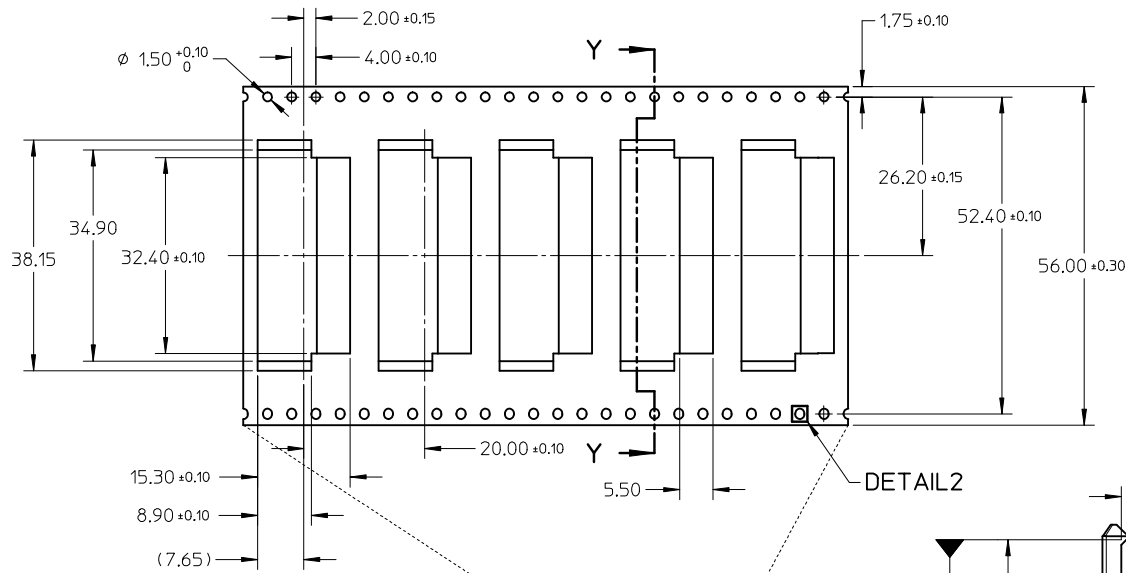
1. PACKAGING QUANTITY : 54 PCS PER TRAY
2. MATERIAL : PVC - CLEAR, ANTISTATIC
0.70MM THICK (PRE-FORMED)

ADD MOIST BARRIER BAG EC NO: S2013-0226 DRWN:SKANG 2012/10/17 CHKD:ATSEE 2012/11/01 APPR:MLONG 2012/11/01	QUALITY SYMBOLS ▽=0 ◻=0	GENERAL TOLERANCES (UNLESS SPECIFIED)		DIMENSION STYLE MM ONLY		SCALE NTS	DESIGN UNITS METRIC	THIRD ANGLE PROJECTION		
			mm	INCH	DRAWN BY	DATE	TITLE			
		4 PLACES	± ---	± ---	YKOH	2006/06/27	SERIAL ATA RECEPTACLE 1.8 INCH HDD RIGHT-ANGLE, SMT			
		3 PLACES	± ---	± ---	CHECKED BY	DATE				
	± 0.20	± ---	SHONG	2006/07/28	MOLEX INCORPORATED					
2 PLACES	± ---	± ---	APPROVED BY	DATE						
1 PLACE	± ---	± ---	KCL ING	2006/07/28	DOCUMENT NO. SD-78109-001 SHEET NO. 5 OF 6					
ANGULAR ± 3 °		MATERIAL NO.		SEE TABLE						
DRAFT WHERE APPLICABLE MUST REMAIN WITHIN DIMENSIONS		SIZE		THIS DRAWING CONTAINS INFORMATION THAT IS PROPRIETARY TO MOLEX INCORPORATED AND SHOULD NOT BE USED WITHOUT WRITTEN PERMISSION						
A1	REV			A3						

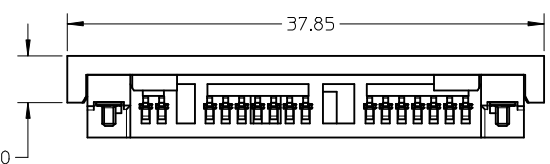
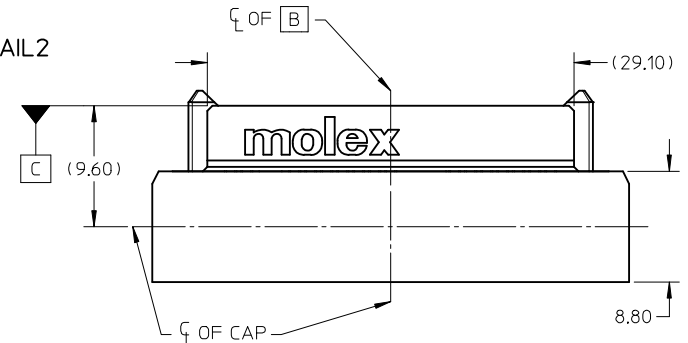
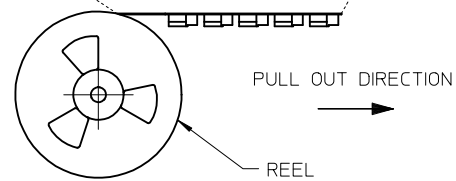
PACKAGING INFORMATION : TAPE & REEL



SECTION Y-Y

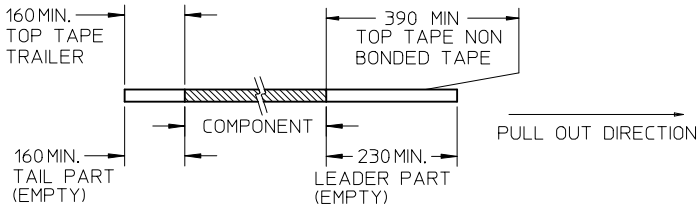


DETAIL 2

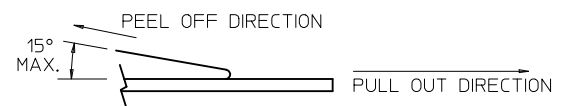


NOTES:

1. LEADER AND TRAILER TAPE



2. PEELING OFF FORCE OF THE TOP TAPE: 20 - 80gf. (PEELING DIRECTION AS SHOWN IN FOLLOWING FIGURE)



- 3. TAPE AND REEL SPECIFICATION IS AS PER EIA-481.
- 4. TAPE AND REEL QUANTITY : 480 PCS/ REEL.
- 5. THE TAPE IS TREATED FOR ANTI-STATIC.

ADD MOIST BARRIER BAG EC NO: S2013-0226 DRWN:SKANG CHKD:ATSEE APPR:MLONG 2012/10/17 2012/11/01 2012/11/01	QUALITY SYMBOLS ▽=0 ◻=0	GENERAL TOLERANCES (UNLESS SPECIFIED)		DIMENSION STYLE	SCALE	DESIGN UNITS	THIRD ANGLE PROJECTION	
				MM ONLY	NTS	METRIC		
				DRAWN BY	DATE	TITLE		
				CHECKED BY	DATE	SERIAL ATA RECEPTACLE		
		ANGULAR ± 3 °		APPROVED BY	DATE	MOLEX INCORPORATED		
		DRAFT WHERE APPLICABLE MUST REMAIN WITHIN DIMENSIONS		MATERIAL NO.	DOCUMENT NO.	SHEET NO.		
				SIZE	THIS DRAWING CONTAINS INFORMATION THAT IS PROPRIETARY TO MOLEX INCORPORATED AND SHOULD NOT BE USED WITHOUT WRITTEN PERMISSION			
				A3	SD-78109-001			
						6 OF 6		