



Chipsmall Limited consists of a professional team with an average of over 10 year of expertise in the distribution of electronic components. Based in Hongkong, we have already established firm and mutual-benefit business relationships with customers from,Europe,America and south Asia,supplying obsolete and hard-to-find components to meet their specific needs.

With the principle of “Quality Parts,Customers Priority,Honest Operation,and Considerate Service”,our business mainly focus on the distribution of electronic components. Line cards we deal with include Microchip,ALPS,ROHM,Xilinx,Pulse,ON,Everlight and Freescale. Main products comprise IC,Modules,Potentiometer,IC Socket,Relay,Connector.Our parts cover such applications as commercial,industrial, and automotives areas.

We are looking forward to setting up business relationship with you and hope to provide you with the best service and solution. Let us make a better world for our industry!



## Contact us

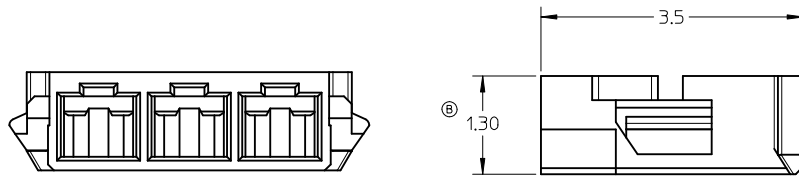
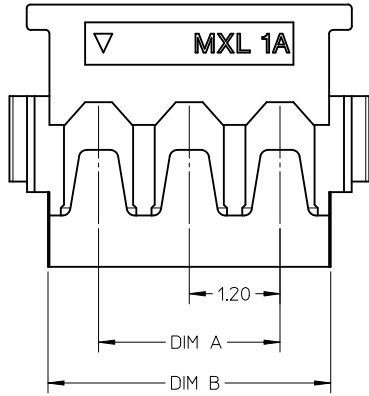
Tel: +86-755-8981 8866 Fax: +86-755-8427 6832

Email & Skype: info@chipsmall.com Web: www.chipsmall.com

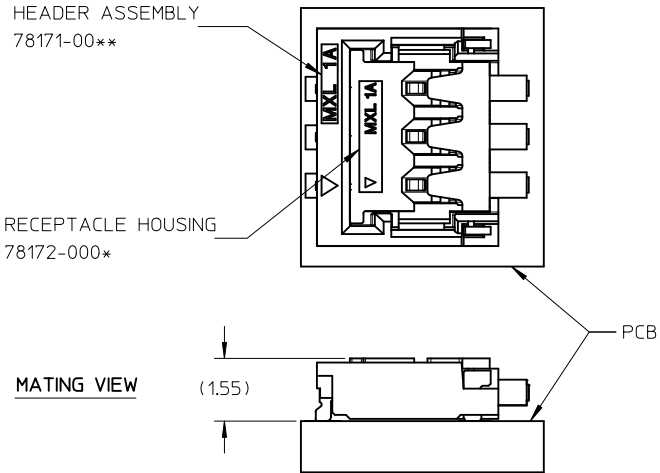
Address: A1208, Overseas Decoration Building, #122 Zhenhua RD., Futian, Shenzhen, China



CKT SIZE	PART NUMBER	DIM A	DIM B
2	78172-0002	1.2	2.6
3	78172-0003	2.4	3.8
4	78172-0004	3.6	5.0
5	78172-0005	4.8	6.2



- NOTES:
- MATERIALS:  
HOUSING: LCP, UL94V-0, COLOUR : BLACK
  - PRODUCT SPECIFICATION: PS-78171-010
  - ASSEMBLE WITH CRIMP TERMINAL PART NUMBER 78172-0410 (REEL FORM)
  - MATES WITH MOLEX PART NUMBER 78171-00\*\*
  - 3 CIRCUITS IS SHOWN FOR ILLUSTRATION PURPOSE ONLY



REVISED EC NO: J2011-0746 DRWN: CWLAM CHKD: APPR: NUKITA	DESCRIPTION 2010/12/06 2011/03/17	QUALITY SYMBOLS	GENERAL TOLERANCES (UNLESS SPECIFIED)	DIMENSION STYLE	SCALE	DESIGN UNITS	THIRD ANGLE PROJECTION													
		$\nabla = 0$ $\nabla C = 0$	<table border="1"> <thead> <tr> <th></th> <th>mm</th> <th>INCH</th> </tr> </thead> <tbody> <tr> <td>4 PLACES</td> <td>± ---</td> <td>± ---</td> </tr> <tr> <td>3 PLACES</td> <td>± ---</td> <td>± ---</td> </tr> <tr> <td>2 PLACES</td> <td>± 0.2</td> <td>± ---</td> </tr> <tr> <td>1 PLACE</td> <td>± 0.3</td> <td>± ---</td> </tr> </tbody> </table>		mm	INCH	4 PLACES	± ---	± ---	3 PLACES	± ---	± ---	2 PLACES	± 0.2	± ---	1 PLACE	± 0.3	± ---	MM ONLY	NTS
	mm	INCH																		
4 PLACES	± ---	± ---																		
3 PLACES	± ---	± ---																		
2 PLACES	± 0.2	± ---																		
1 PLACE	± 0.3	± ---																		
D			DRAFT WHERE APPLICABLE MUST REMAIN WITHIN DIMENSIONS	DRAWN BY: CWLAM CHECKED BY: KSSHANTHA APPROVED BY: NUKITA DATE: 2007/10/31 DATE: 2007/12/07 DATE: 2010/03/13	TITLE <b>1.20MM PITCH, W-T-B RECEPTACLE CONNECTOR</b>															
				SEE TABLE	MOLEX INCORPORATED		SHEET NO. 1 OF 1													
				THIS DRAWING CONTAINS INFORMATION THAT IS PROPRIETARY TO MOLEX INCORPORATED AND SHOULD NOT BE USED WITHOUT WRITTEN PERMISSION	DOCUMENT NO. <b>SD-78172-007</b>															