



Chipsmall Limited consists of a professional team with an average of over 10 year of expertise in the distribution of electronic components. Based in Hongkong, we have already established firm and mutual-benefit business relationships with customers from,Europe,America and south Asia,supplying obsolete and hard-to-find components to meet their specific needs.

With the principle of "Quality Parts,Customers Priority,Honest Operation,and Considerate Service",our business mainly focus on the distribution of electronic components. Line cards we deal with include Microchip,ALPS,ROHM,Xilinx,Pulse,ON,Everlight and Freescale. Main products comprise IC,Modules,Potentiometer,IC Socket,Relay,Connector.Our parts cover such applications as commercial,industrial, and automotives areas.

We are looking forward to setting up business relationship with you and hope to provide you with the best service and solution. Let us make a better world for our industry!



## Contact us

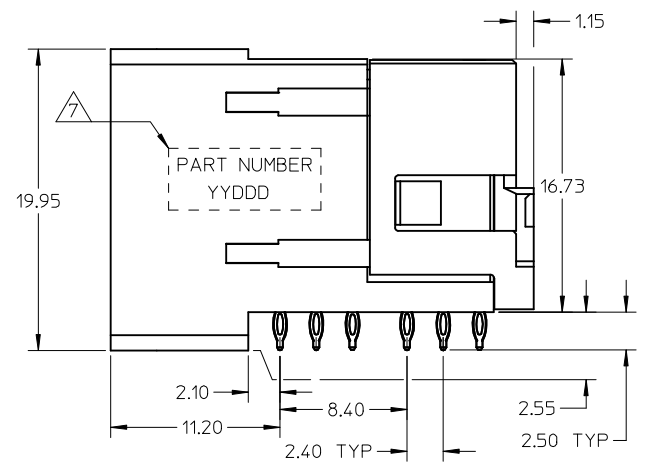
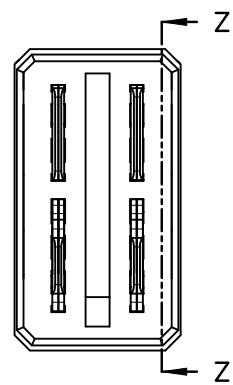
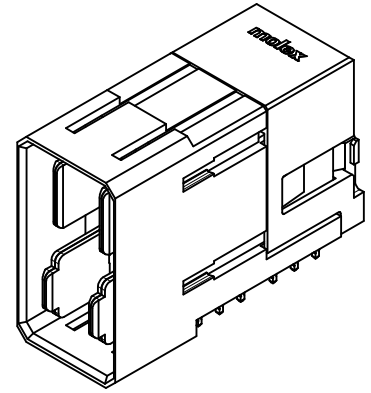
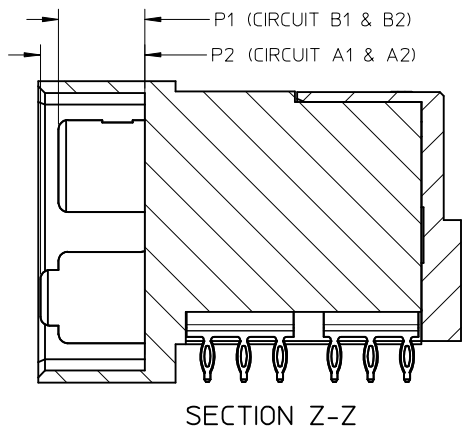
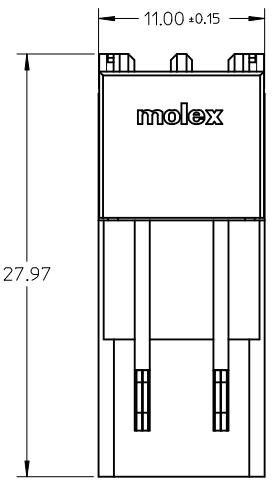
Tel: +86-755-8981 8866 Fax: +86-755-8427 6832

Email & Skype: info@chipsmall.com Web: www.chipsmall.com

Address: A1208, Overseas Decoration Building, #122 Zhenhua RD., Futian, Shenzhen, China

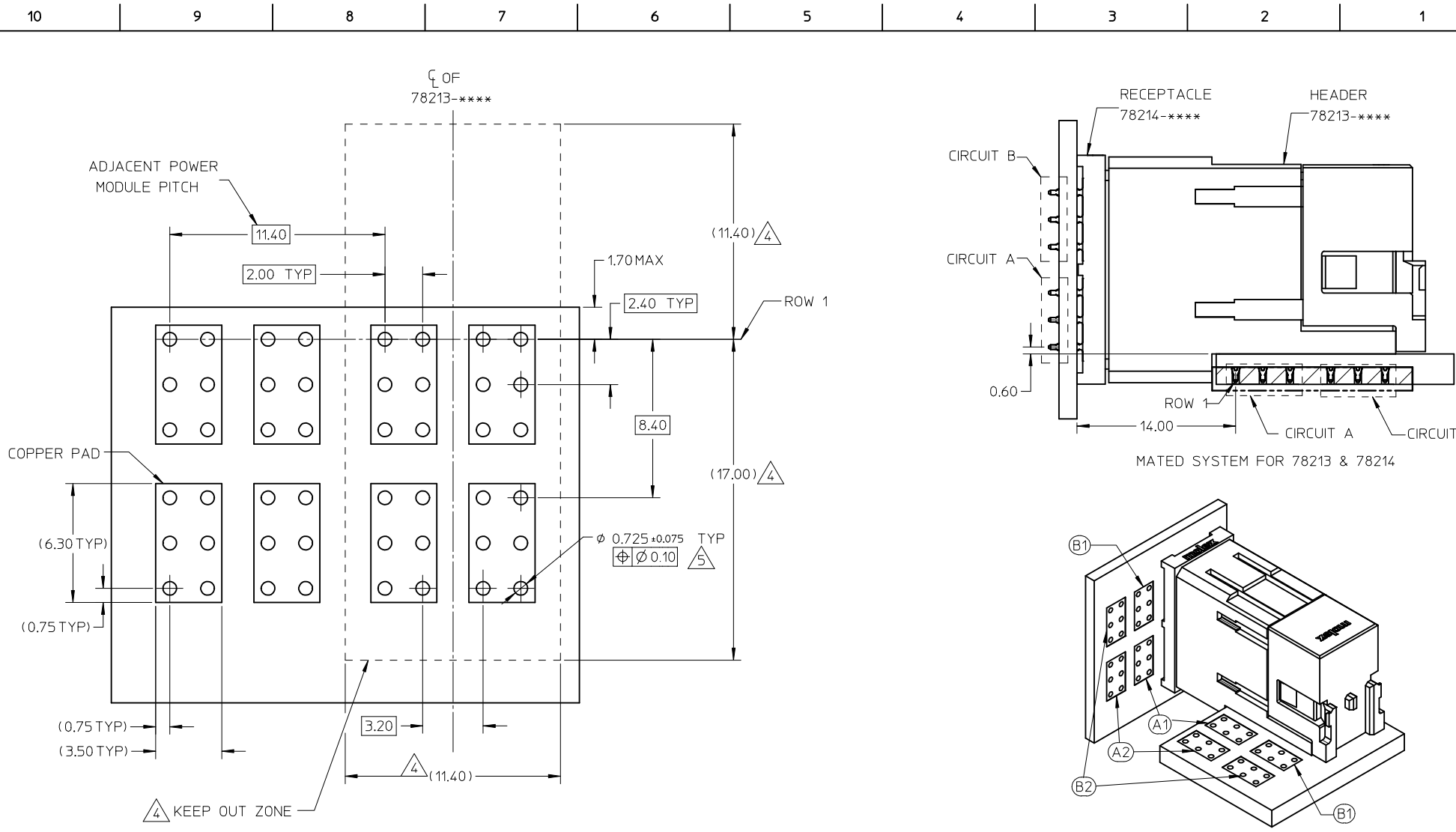


10 9 8 7 6 5 4 3 2 1



REVISED EC NO: S2010-0157 DRW: CTCH0 CHK: DLNG APPR: SHONG 2009/09/03 2009/09/04 2009/09/04	DESCRIPTION A2	QUALITY SYMBOLS	GENERAL TOLERANCES (UNLESS SPECIFIED)	DIMENSION STYLE	SCALE	DESIGN UNITS	THIRD ANGLE PROJECTION	
		$\nabla=0$ $\text{C}=0$	mm    INCH 4 PLACES ± --- ± --- 3 PLACES ± --- ± --- 2 PLACES ± 0.25 ± --- 1 PLACE ± --- ± --- ANGULAR ± 3 °	MM ONLY	NTS	METRIC	DRAWN BY: LNG    DATE: 2007/11/02 CHECKED BY: KWLOKE    DATE: 2008/01/11 APPROVED BY: SHONG    DATE: 2008/01/11	TITLE IMPACT POWER, 4 PAIR RIGHT ANGLE HEADER PRESS-FIT MOLEX INCORPORATED DOCUMENT NO. SD-78213-003 SHEET NO. 1 OF 3
		DRAFT WHERE APPLICABLE MUST REMAIN WITHIN DIMENSIONS	SEE TABLE	THIS DRAWING CONTAINS INFORMATION THAT IS PROPRIETARY TO MOLEX INCORPORATED AND SHOULD NOT BE USED WITHOUT WRITTEN PERMISSION				

9 8 7 6 5 4 3 2 1



RECOMMENDED PCB LAYOUT  
 (COMPONENT SIDE SHOWN)  
 MINIMUM BOARD THICKNESS: 1.60mm  
 RECOMMENDED BOARD THICKNESS: 2.80mm

REVISED	EC NO: S2010-0157	2009/09/03	2009/09/04	2009/09/04
	DRW:CTCHO			
	CHKD:LLG			
	APPR:SHONG			
A2	REV	DESCRIPTION		

QUALITY SYMBOLS	▽=0
	∇=0

GENERAL TOLERANCES (UNLESS SPECIFIED)	mm	INCH
	4 PLACES ± ---	± ---
	3 PLACES ± ---	± ---
	2 PLACES ± 0.25	± ---
	1 PLACE ± ---	± ---
	ANGULAR ± 3 °	
DRAFT WHERE APPLICABLE MUST REMAIN WITHIN DIMENSIONS		

DIMENSION STYLE		SCALE	DESIGN UNITS	THIRD ANGLE PROJECTION
MM ONLY		NTS	METRIC	
DRAWN BY	DATE	TITLE		
LNG	2007/11/02	IMPACT POWER, 4 PAIR RIGHT ANGLE HEADER PRESS-FIT		
CHECKED BY	DATE	MOLEX INCORPORATED		
KWLOKE	2008/01/11	DOCUMENT NO. SD-78213-003		
APPROVED BY	DATE	SHEET NO. 2 OF 3		
SHONG	2008/01/11	THIS DRAWING CONTAINS INFORMATION THAT IS PROPRIETARY TO MOLEX INCORPORATED AND SHOULD NOT BE USED WITHOUT WRITTEN PERMISSION		
MATERIAL NO.	SIZE			
	A3			

10	9	8	7	6	5	4	3	2	1	
PART NUMBER	P1 (APPLIES TO B1 & B2)	P2 (APPLIES TO A1 & A2)	△ PLATING OPTIONS	PACKAGING						
78213-1011	6.90	6.90	TIN PLATING	TRAY						
78213-1022	5.70	5.70								
78213-1033	6.90	5.70								
78213-1044	5.70	6.90								
78213-5011	6.90	6.90	TIN-LEAD PLATING							
78213-5022	5.70	5.70								
78213-5033	6.90	5.70								
78213-5044	5.70	6.90								

NOTES:

1. MATERIAL:

HOUSING - LCP, GLASS FILLED, UL94-V0, COLOR: BLACK  
POWER PIN - COPPER ALLOY

2. FINISH OPTION:

TIN - 0.76μm MINIMUM GOLD AT CONTACT AND  
2.54μm MINIMUM TIN AT SOLDER TAIL AREA OVER  
1.27μm MINIMUM NICKEL UNDERPLATE OVERALL.  
TIN-LEAD - 0.76μm MINIMUM GOLD AT CONTACT AND  
2.54μm MINIMUM TIN-LEAD AT SOLDER TAIL AREA OVER  
1.27μm MINIMUM NICKEL UNDERPLATE OVERALL.

3. PRODUCT SPECIFICATION: PS-78213-001.

4. KEEP OUT ZONE FROM OTHER COMPONENTS.

5. PCB NOTE FOR DIAMETER 0.725mm PLATED HOLE.

- DRILLED HOLE SIZE IS 0.838mm  
- PLATED WITH 0.007mm MIN. TIN OVER  
0.03 TO 0.08mm COPPER UNDERPLATE TO ACHIEVE  
0.725±0.075mm HOLE.  
SEE SHEET 2 FOR RECOMMENDED PCB LAYOUT.

6. MATES WITH 78214-\*\*\*\*.

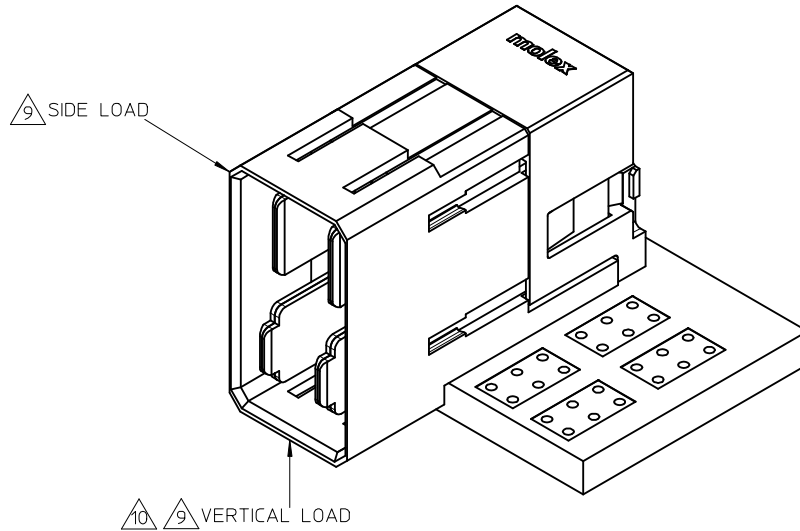
7. PART NUMBER AND DATE CODE (YYDD) APPROXIMATELY SHOWN.

8. REFER TO SERIES 76155 & 76160 FOR SIGNAL MODULES.

9. CONNECTOR-TO-PCB RETENTION FORCE SHALL WITHSTAND  
A VERTICAL AND SIDE LOAD OF 3KGF AND 4KGF MAXIMUM  
RESPECTIVELY.

10. FOR APPLICATION USING LESS THAN 2.80MM PCB THICKNESS,  
DO NOT PLACE PCBA (ASSEMBLED WITH CONNECTOR) ON A FLAT  
SURFACE. THIS IS TO PREVENT EXERTING VERTICAL LOAD  
(WEIGHT OF PCBA) ON CONNECTOR OVERHANG.

11. FOR APPLICATION THAT REQUIRES MORE CONNECTOR-TO-PCB  
RETENTION FORCE, PLEASE CONTACT MOLEX SALE TECHNICAL  
PERSONNEL FOR RECOMMENDATION.



REVISED EC NO: S2010-0157 DRW:CTCHO 2009/09/03 CHK:DLNG 2009/09/04 APPR:SHONG 2009/09/04 REV	QUALITY SYMBOLS	GENERAL TOLERANCES (UNLESS SPECIFIED)	DIMENSION STYLE	SCALE	DESIGN UNITS	THIRD ANGLE PROJECTION	
	▽=0 ∇=0	mm INCH	MM ONLY	NTS	METRIC		
		4 PLACES ± --- ± ---	DRAWN BY	DATE	TITLE		
		3 PLACES ± --- ± ---	CHECKED BY	DATE	IMPACT POWER, 4 PAIR RIGHT ANGLE HEADER PRESS-FIT		
		2 PLACES ± 0.25 ± ---	APPROVED BY	DATE	MOLEX INCORPORATED		
	1 PLACE ± --- ± ---	SHONG	2008/01/11	DOCUMENT NO. SD-78213-003			
	ANGULAR ± 3 °	DRAFT WHERE APPLICABLE MUST REMAIN WITHIN DIMENSIONS		SEE TABLE		SHEET NO. 3 OF 3	
		THIS DRAWING CONTAINS INFORMATION THAT IS PROPRIETARY TO MOLEX INCORPORATED AND SHOULD NOT BE USED WITHOUT WRITTEN PERMISSION					