



Chipsmall Limited consists of a professional team with an average of over 10 year of expertise in the distribution of electronic components. Based in Hongkong, we have already established firm and mutual-benefit business relationships with customers from,Europe,America and south Asia,supplying obsolete and hard-to-find components to meet their specific needs.

With the principle of “Quality Parts,Customers Priority,Honest Operation,and Considerate Service”,our business mainly focus on the distribution of electronic components. Line cards we deal with include Microchip,ALPS,ROHM,Xilinx,Pulse,ON,Everlight and Freescale. Main products comprise IC,Modules,Potentiometer,IC Socket,Relay,Connector.Our parts cover such applications as commercial,industrial, and automotives areas.

We are looking forward to setting up business relationship with you and hope to provide you with the best service and solution. Let us make a better world for our industry!



Contact us

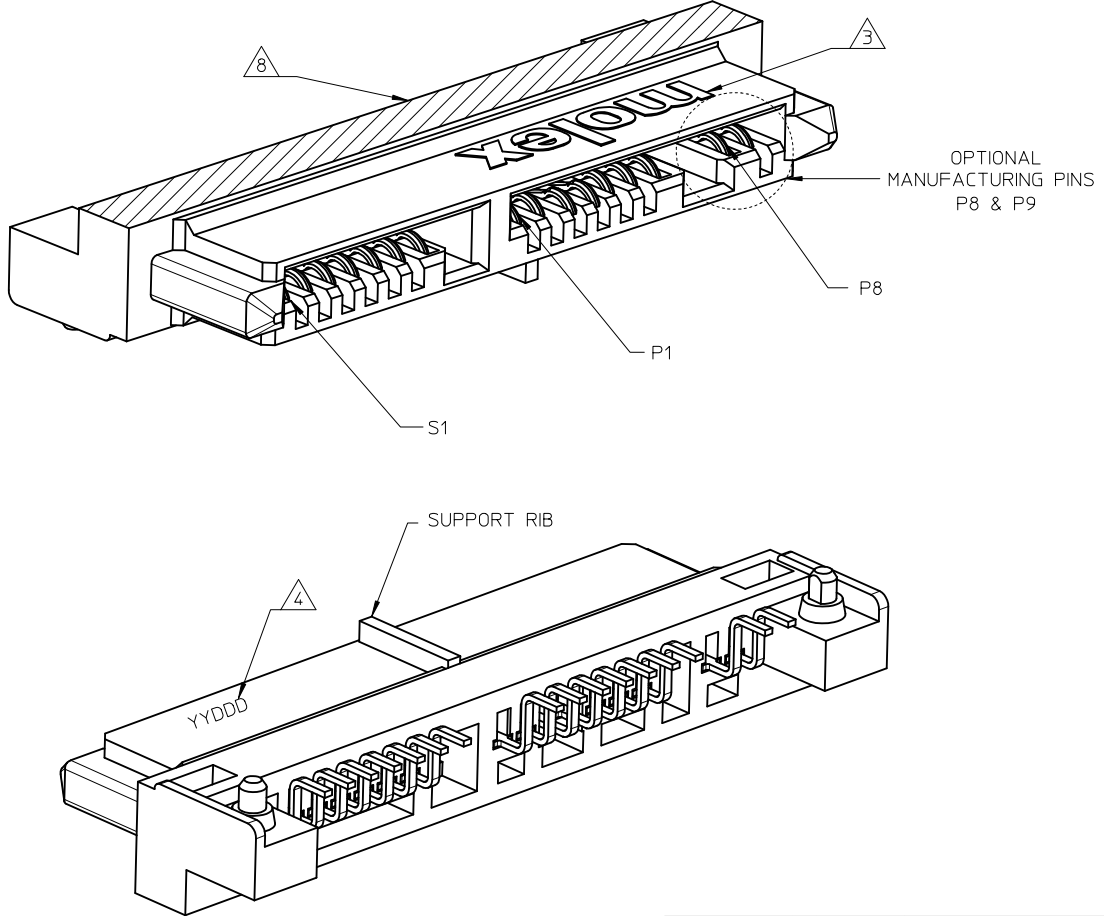
Tel: +86-755-8981 8866 Fax: +86-755-8427 6832

Email & Skype: info@chipsmall.com Web: www.chipsmall.com

Address: A1208, Overseas Decoration Building, #122 Zhenhua RD., Futian, Shenzhen, China



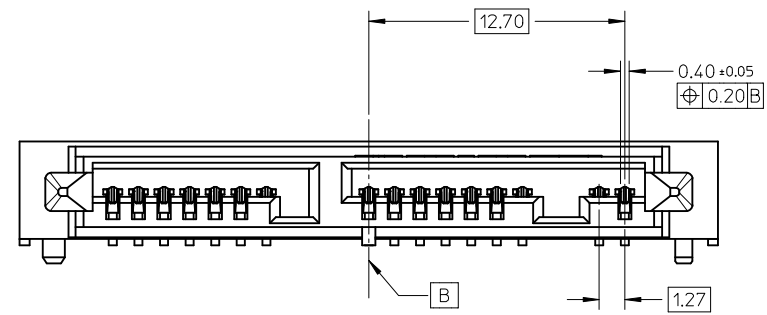
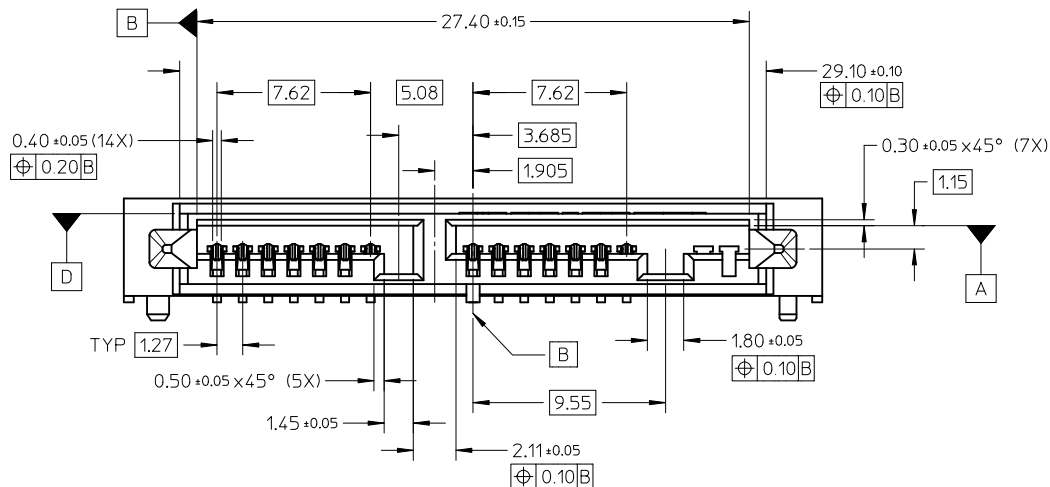
5	4	3	2	1
PART NUMBER	TOTAL PINS	DESCRIPTION		
78320-0002	16	WITH OPTIONAL MANUFACTURING PINS (S1 TO S7 & P1 TO P9)		
78320-1002	14	WITHOUT OPTIONAL MANUFACTURING PINS (S1 TO S7 & P1 TO P7)		



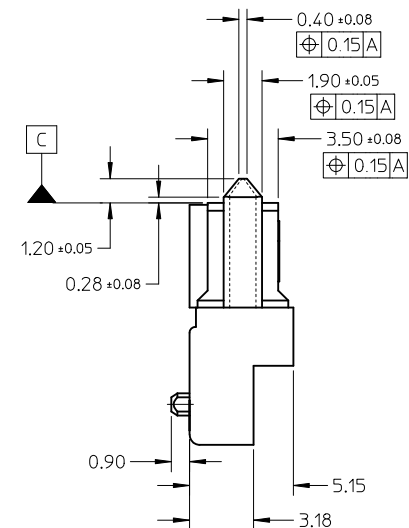
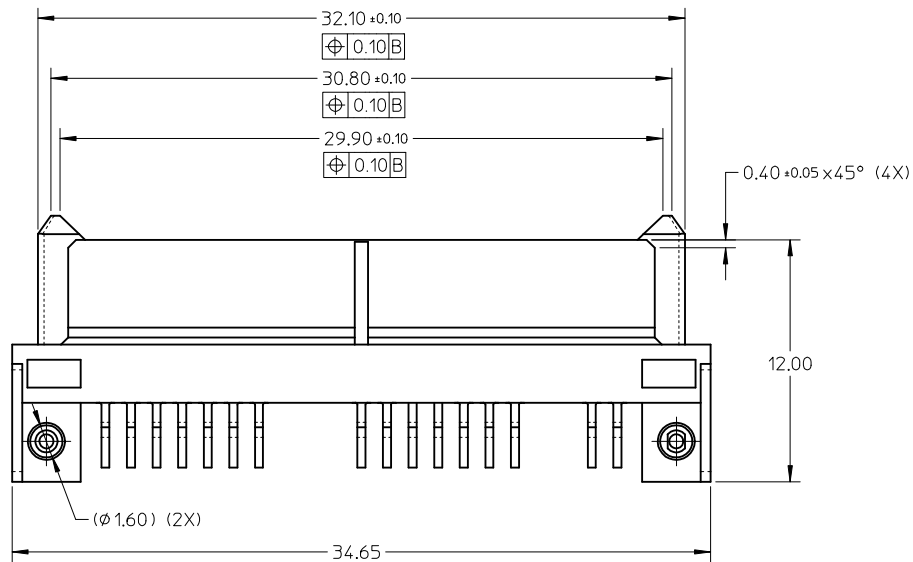
- NOTES:
- MATERIAL : NYLON (PA) 9T, GLASS FILLED, UL 94V-0, BLACK
TERMINAL : COPPER ALLOY
 - PLATING :
TERMINAL : 0.76µm MIN. SELECTIVE GOLD OVER
1.27µm MIN. NICKEL UNDERPLATE
2.54µm MIN. TIN OVER
1.27µm MIN. NICKEL UNDERPLATE
 - MOLEX LOGO LOCATED APPROXIMATELY AS SHOWN
 - DATE CODE LOCATED APPROXIMATELY AS SHOWN
 - PACKAGING : TAPE AND REEL
 - THIS PRODUCT IS COMPLIANT TO RoHS DIRECTIVE WITH THE FOLLOWING BANNED SUBSTANCES - LEAD, MERCURY, CADMIUM, HEXAVALENT CHROMIUM, POLYBROMINATED BIPHENYLS AND POLYBROMINATED DIPHENYLS ETHERS.
 - NON FUNCTIONAL CORING MAY VARY.
 - PROPOSED PICK & PLACE SURFACE.
 - PRODUCT SPECIFICATION: PS-78320-002

SEE SHEET 5 EC NO: S2010-1046 DRWN:GMENARLY 2010/06/28 CHKD:SCHEONG 2010/07/05 APPR:BOKOK 2010/07/06	QUALITY SYMBOLS	GENERAL TOLERANCES (UNLESS SPECIFIED)		DIMENSION STYLE MM ONLY		SCALE NTS	DESIGN UNITS METRIC	THIRD ANGLE PROJECTION	
	▽ _A =0		mm	INCH	DRAWN BY	DATE	TITLE		
	▽ _B =0	4 PLACES	± ---	± ---	GMENARLY	2007/10/08	SERIAL ATA RECEPTACLE		
	▽ _C =0	3 PLACES	± ---	± ---	CHECKED BY	DATE	1.8 INCH HDD/SSD		
	▽ _D =0	2 PLACES	± 0.20	± ---	YKOH	2007/11/21	R/A, SMT, 3.80MM HEIGHT		
	1 PLACE	± ---	± ---	APPROVED BY	DATE	MOLEX INCORPORATED			
		ANGULAR ± 3 °		BOKOK	2010/01/26	MOLEX INCORPORATED			
		DRAFT WHERE APPLICABLE MUST REMAIN WITHIN DIMENSIONS		MATERIAL NO.	SEE TABLE		DOCUMENT NO.	SD-78320-002	
				SIZE	THIS DRAWING CONTAINS INFORMATION THAT IS PROPRIETARY TO MOLEX INCORPORATED AND SHOULD NOT BE USED WITHOUT WRITTEN PERMISSION			SHEET NO. 1 OF 5	

10 9 8 7 6 5 4 3 2 1



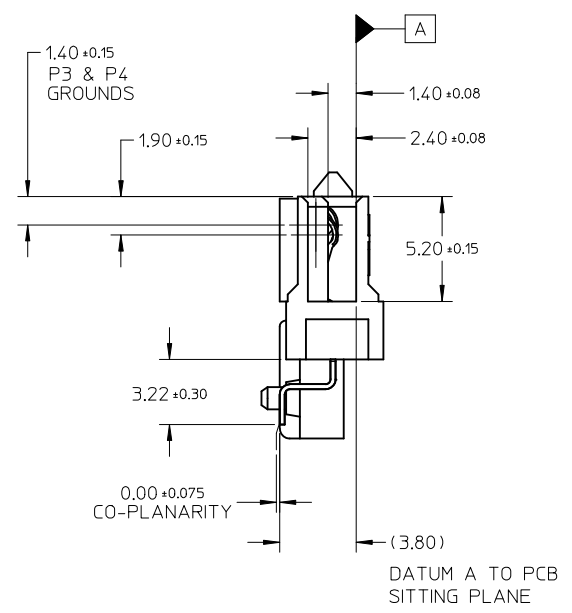
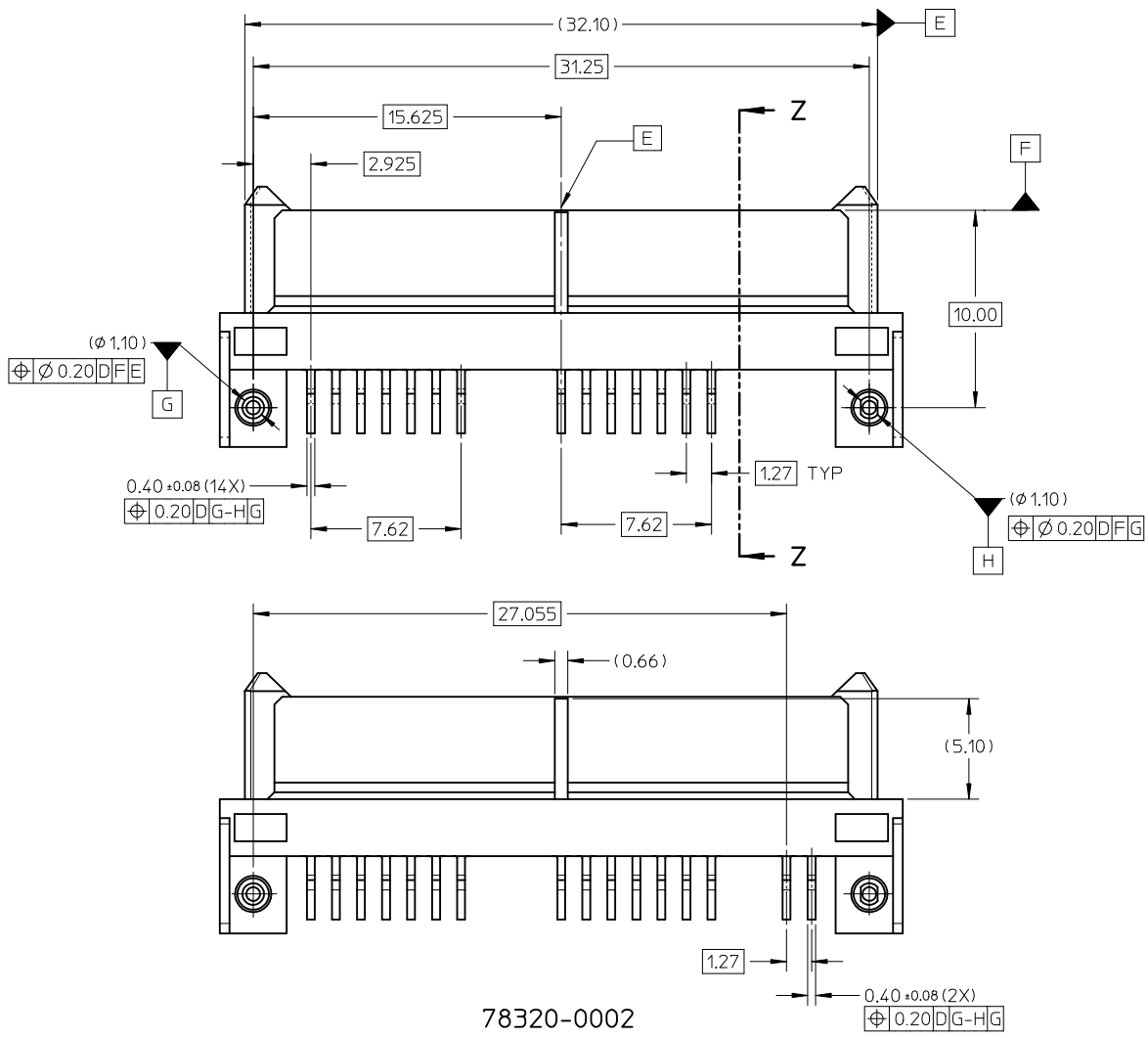
78320-0002



SEE SHEET 5 EC NO: S2010-1046 DRWN:GMENARLY 2010/06/28 CHKD:SCHEONG 2010/07/05 APPR:BOKKOK 2010/07/06	QUALITY SYMBOLS	GENERAL TOLERANCES (UNLESS SPECIFIED)		DIMENSION STYLE		SCALE	DESIGN UNITS	THIRD ANGLE PROJECTION		
	$\nabla_A = 0$ $\nabla_C = 0$ $\nabla_P = 0$	mm	INCH	MM ONLY		NTS	METRIC			
		4 PLACES	± ---	± ---	DRAWN BY	DATE	TITLE			
		3 PLACES	± ---	± ---	CHECKED BY	DATE	SERIAL ATA RECEPTACLE 1.8 INCH HDD/SSD R/A, SMT, 3.80MM HEIGHT			
	2 PLACES	± 0.20	± ---	APPROVED BY	DATE	MOLEX INCORPORATED				
	1 PLACE	± ---	± ---	MATERIAL NO.	2010/01/26	DOCUMENT NO. SD-78320-002				
	ANGULAR ± 3 °		DRAFT WHERE APPLICABLE MUST REMAIN WITHIN DIMENSIONS		SEE TABLE		SHEET NO. 2 OF 5			
	THIS DRAWING CONTAINS INFORMATION THAT IS PROPRIETARY TO MOLEX INCORPORATED AND SHOULD NOT BE USED WITHOUT WRITTEN PERMISSION									

9 8 7 6 5 4 3 2 1

10 9 8 7 6 5 4 3 2 1



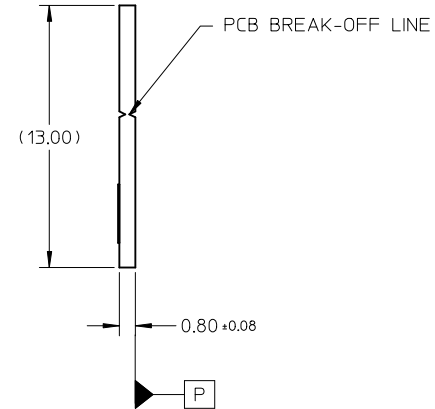
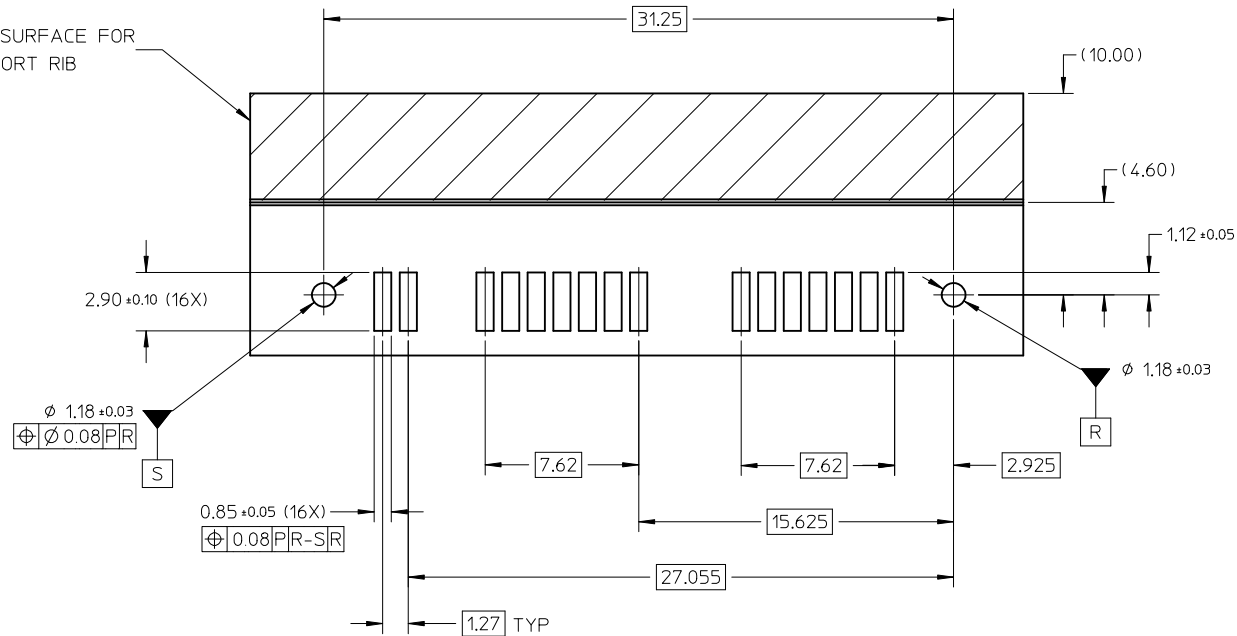
SECTION Z-Z

78320-0002

SEE SHEET 5 EC NO: S2010-1046 DRW: GMENARLY 2010/06/28 CHK: DSICHEONG 2010/07/05 APPR: BOKKOK 2010/07/06	QUALITY SYMBOLS $F_A=0$ $F_G=0$ $F_P=0$	GENERAL TOLERANCES (UNLESS SPECIFIED)		DIMENSION STYLE MM ONLY		SCALE NTS	DESIGN UNITS METRIC	THIRD ANGLE PROJECTION			
			mm	INCH	DRAWN BY GMENARLY	DATE 2007/10/08	TITLE SERIAL ATA RECEPTACLE 1.8 INCH HDD/SSD R/A, SMT, 3.80MM HEIGHT				
			4 PLACES	± ---	± ---	CHECKED BY YKOH	DATE 2007/11/21	MOLEX INCORPORATED			
			3 PLACES	± ---	± ---	APPROVED BY BOKKOK	DATE 2010/01/26	DOCUMENT NO. SD-78320-002		SHEET NO. 3 OF 5	
	2 PLACES	± 0.20	± ---	MATERIAL NO. SEE TABLE		THIS DRAWING CONTAINS INFORMATION THAT IS PROPRIETARY TO MOLEX INCORPORATED AND SHOULD NOT BE USED WITHOUT WRITTEN PERMISSION					
	1 PLACE	± ---	± ---	DRAFT WHERE APPLICABLE MUST REMAIN WITHIN DIMENSIONS							
	ANGULAR ± 3 °										

9 8 7 6 5 4 3 2 1

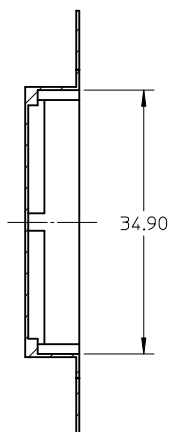
RESTING SURFACE FOR
SUPPORT RIB



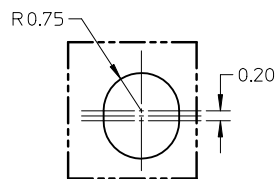
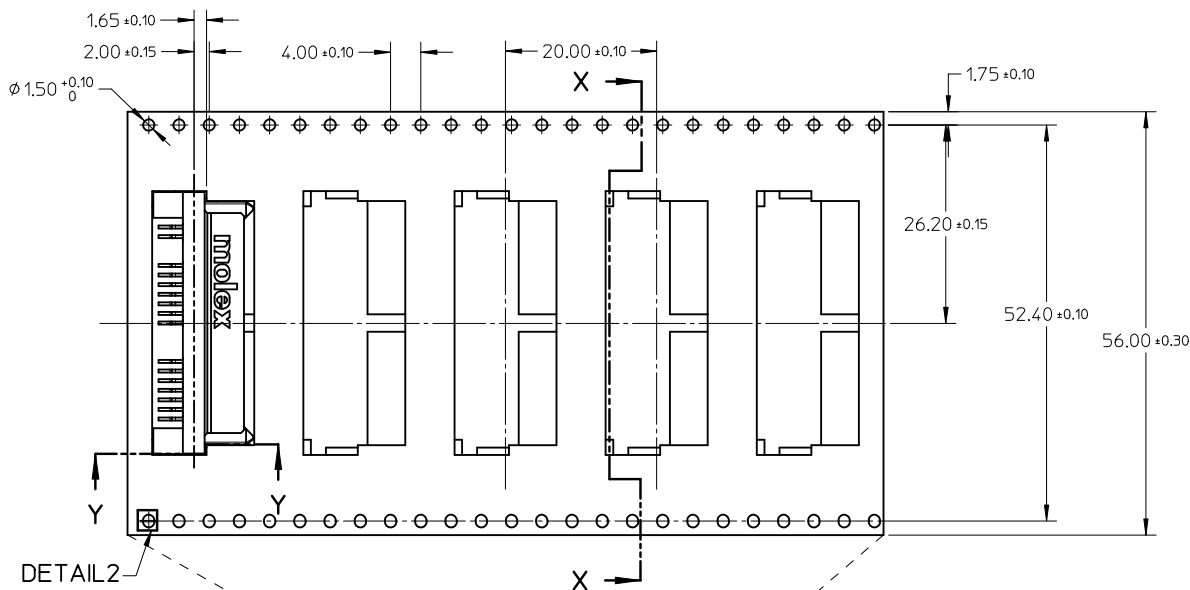
RECOMMENDED PCB LAYOUT

SEE SHEET 5 EC NO: S2010-1046 DRWN: GMENARLY 2010/06/28 CH'KD: SCHEONG 2010/07/05 APPR: BOKOK 2010/07/06	QUALITY SYMBOLS	GENERAL TOLERANCES (UNLESS SPECIFIED)	DIMENSION STYLE	SCALE	DESIGN UNITS	THIRD ANGLE PROJECTION
	$\nabla_A = 0$ $\nabla_C = 0$ $\nabla_P = 0$	mm INCH 4 PLACES ± --- ± --- 3 PLACES ± --- ± --- 2 PLACES ± 0.20 ± --- 1 PLACE ± --- ± --- ANGULAR ± 3 °	MM ONLY	NTS	METRIC	
	DESCRIPTION	DRAFT WHERE APPLICABLE MUST REMAIN WITHIN DIMENSIONS	DRAWN BY	DATE	TITLE	
	REV		GMENARLY	2007/10/08	SERIAL ATA RECEPTACLE 1.8 INCH HDD/SSD R/A, SMT, 3.80MM HEIGHT	
A3		YKOH	2007/11/21	MOLEX INCORPORATED		
		BOKOK	2010/01/26	SD-78320-002	4 OF 5	
		MATERIAL NO.	SEE TABLE	THIS DRAWING CONTAINS INFORMATION THAT IS PROPRIETARY TO MOLEX INCORPORATED AND SHOULD NOT BE USED WITHOUT WRITTEN PERMISSION		

PACKAGING INFORMATION



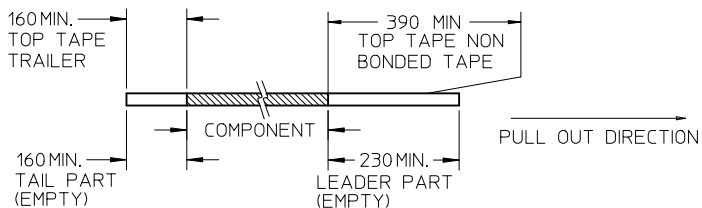
SECTION X-X



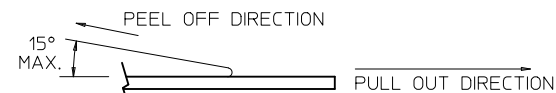
DETAIL2

NOTES:

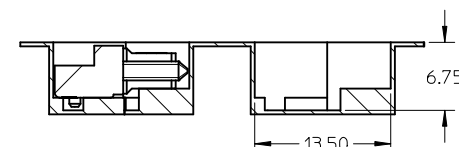
1. LEADER AND TRAILER TAPE



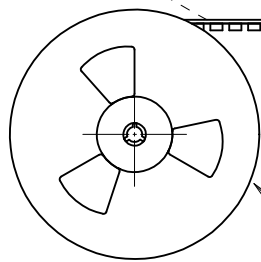
2. PEELING OFF FORCE OF THE TOP TAPE: 20 - 80gf.
(PEELING DIRECTION AS SHOWN IN FOLLOWING FIGURE)



- 3. TAPE AND REEL SPECIFICATION IS AS PER EIA-481.
- 4. TAPE AND REEL QUANTITY : SPQ=500PCS/REEL, MDQ=1000PCS/CARTON
: QTY/REEL=500PCS, REELS/CARTON=2
- 5. THE TAPE IS TREATED FOR ANTI-STATIC.



PARTIAL1 OF SECTION Y-Y



PULL OUT DIRECTION

REEL

TYPED ERROR NOTE 4 (MDO) EIC NO: S2010-1046 DRWING: GMENARLY 2010/06/28 CHK'D: SCHEONG 2010/07/05 APPR: BOKKOK 2010/07/06	QUALITY SYMBOLS	GENERAL TOLERANCES (UNLESS SPECIFIED)		DIMENSION STYLE		SCALE	DESIGN UNITS	THIRD ANGLE PROJECTION		
	$F_A=0$ $F_G=0$ $F_P=0$	mm	INCH	MM ONLY		NTS	METRIC			
		4 PLACES	± ---	± ---	DRAWN BY	DATE	TITLE			
		3 PLACES	± ---	± ---	CHECKED BY	DATE	SERIAL ATA RECEPTACLE 1.8 INCH HDD/SSD R/A, SMT, 3.80MM HEIGHT			
	2 PLACES	± 0.20	± ---	APPROVED BY	DATE	MOLEX INCORPORATED				
	1 PLACE	± ---	± ---	MATERIAL NO.	2010/01/26	DOCUMENT NO.				
	ANGULAR ± 3 °		DRAFT WHERE APPLICABLE MUST REMAIN WITHIN DIMENSIONS		SEE TABLE		SD-78320-002		SHEET NO.	
					SIZE	THIS DRAWING CONTAINS INFORMATION THAT IS PROPRIETARY TO MOLEX INCORPORATED AND SHOULD NOT BE USED WITHOUT WRITTEN PERMISSION				
					A3					