



Chipsmall Limited consists of a professional team with an average of over 10 year of expertise in the distribution of electronic components. Based in Hongkong, we have already established firm and mutual-benefit business relationships with customers from,Europe,America and south Asia,supplying obsolete and hard-to-find components to meet their specific needs.

With the principle of “Quality Parts,Customers Priority,Honest Operation,and Considerate Service”,our business mainly focus on the distribution of electronic components. Line cards we deal with include Microchip,ALPS,ROHM,Xilinx,Pulse,ON,Everlight and Freescale. Main products comprise IC,Modules,Potentiometer,IC Socket,Relay,Connector.Our parts cover such applications as commercial,industrial, and automotives areas.

We are looking forward to setting up business relationship with you and hope to provide you with the best service and solution. Let us make a better world for our industry!



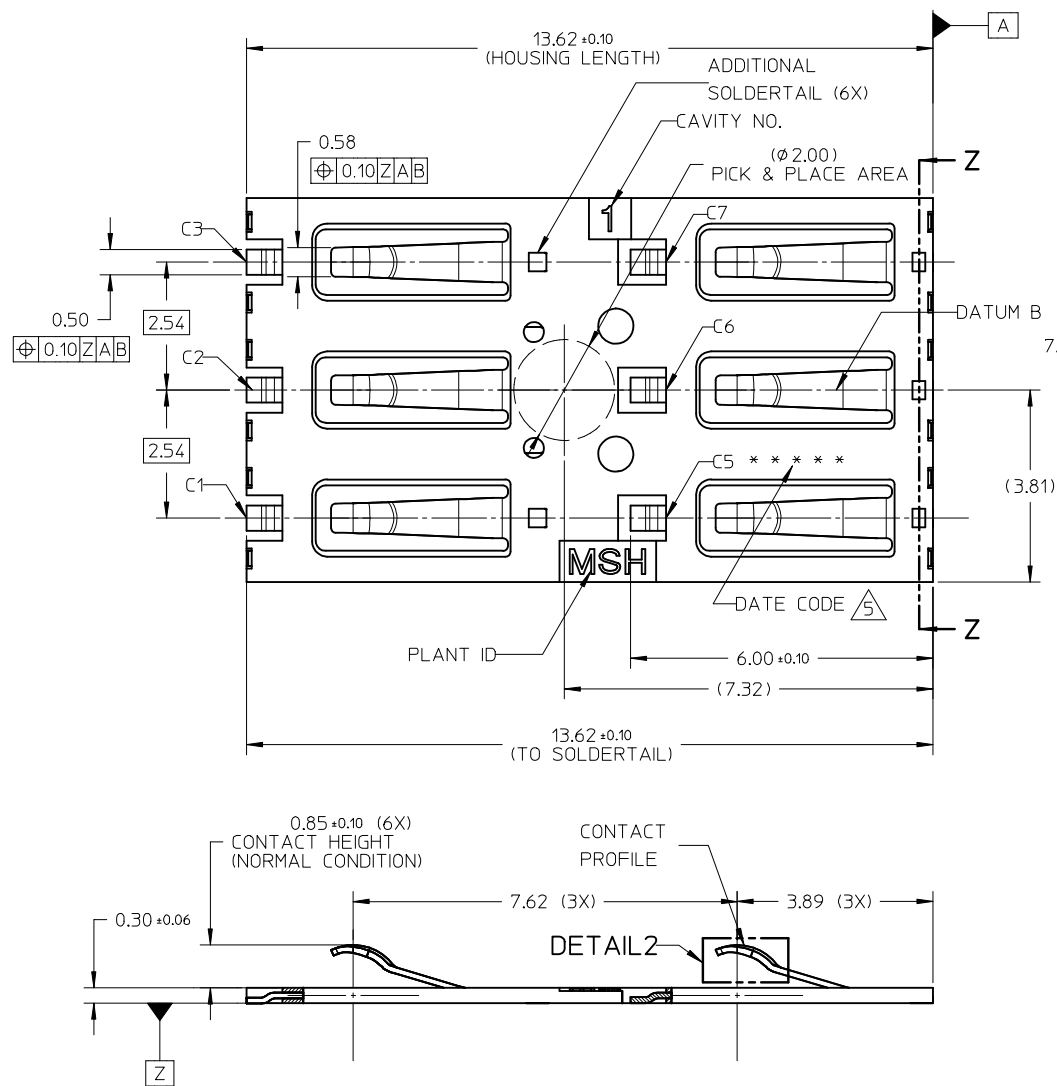
## Contact us

Tel: +86-755-8981 8866 Fax: +86-755-8427 6832

Email & Skype: info@chipsmall.com Web: www.chipsmall.com

Address: A1208, Overseas Decoration Building, #122 Zhenhua RD., Futian, Shenzhen, China

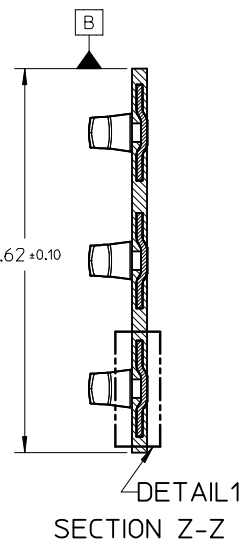




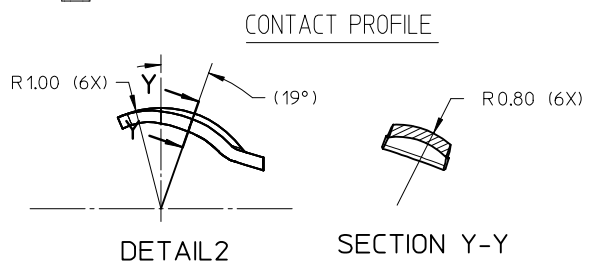
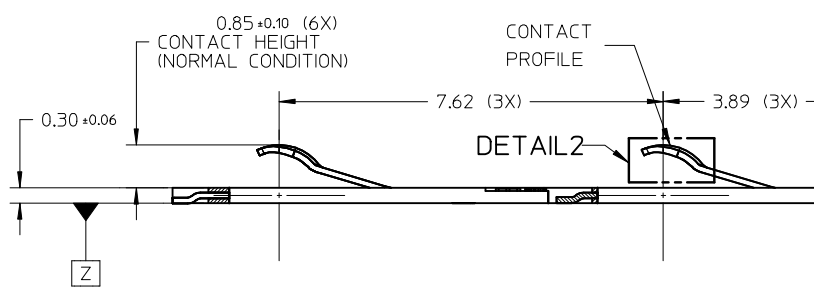
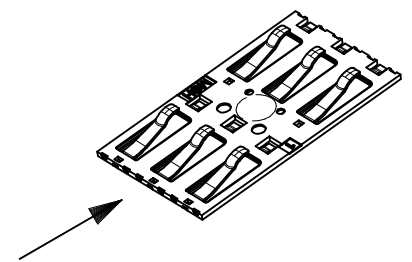
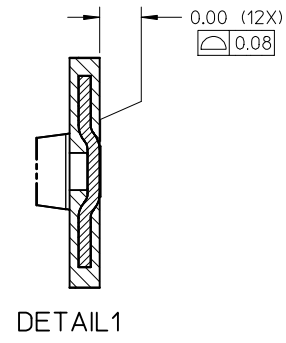
NOTE:  
 1. MATERIAL: HOUSING : LCP, GLASS FILLED, UL94-V0, COLOR: BLACK  
 TERMINAL : COPPER ALLOY  
 2. FINISH: TERMINAL: SEE TABLE

CONTACT AREA	SOLDER TAIL AREA	OTHERS AREA
GOLD (0.38µm MIN)	GOLD FLASH (0.054µm MIN)	NICKEL PLATING
OVER NICKEL UNDERPLATE (2.00µm MIN)		

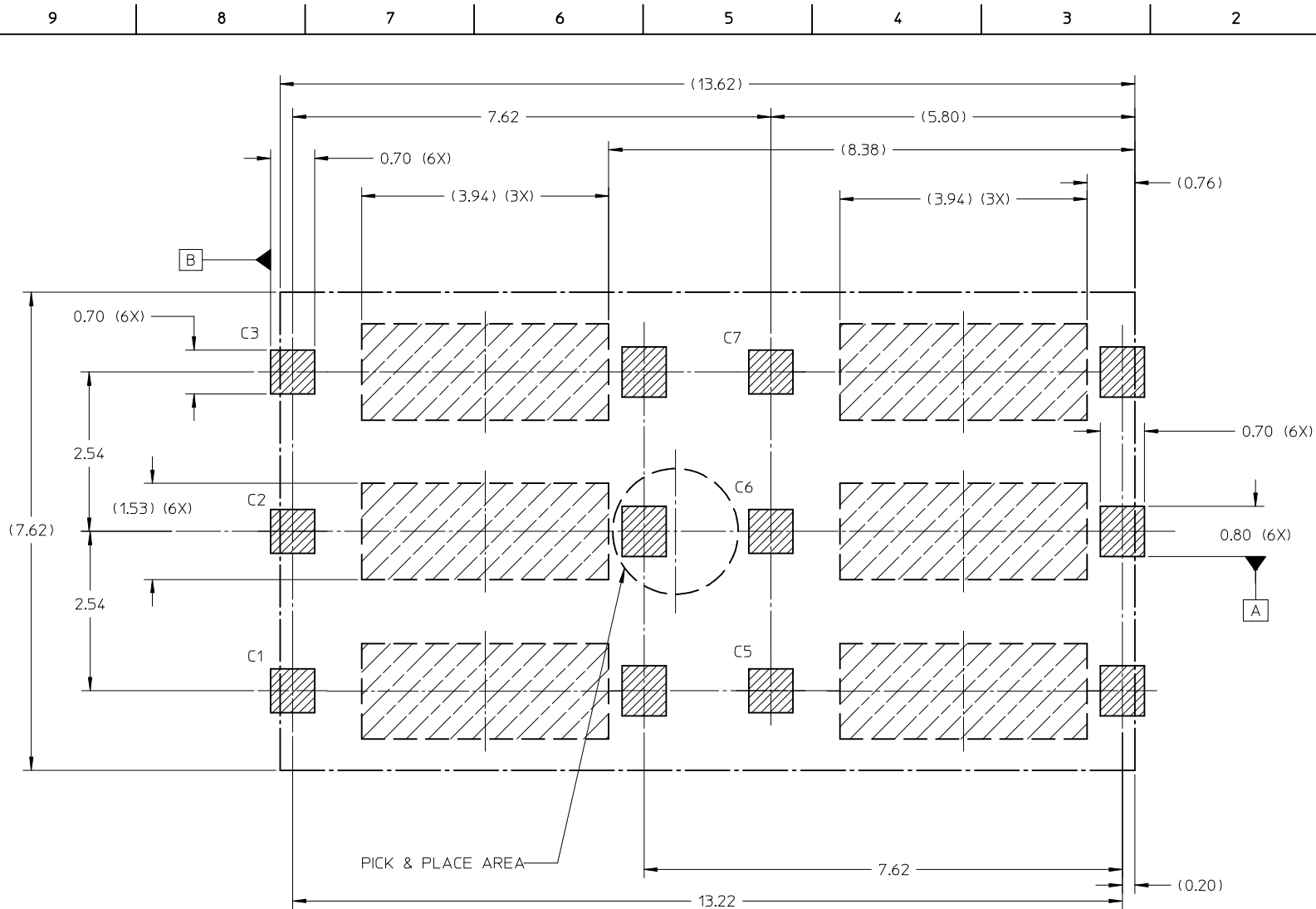
3. PRODUCT SPECIFICATION: PS-78545-002  
 4. PACKAGING SPECIFICATION: PK-78545-001  
 5. DATE CODE:  
 \*\* \*\* \* (5 DIGIT)  
 DAY  
 WEEK  
 YEAR  
 6. COMPLIANT TO RoHS DIRECTIVE 2002/95/EC AND  
 ELV DIRECTIVE 2000/53/EC



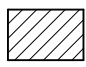


CARD INSERTION DIRECTION




NEW RELEASE EC NO: S2013-0001 DRWN:FCS00 CHKD:JTAN02 APPR:KHLIM 2012/07/02 2012/07/20 2012/07/23	QUALITY SYMBOLS F <sub>A</sub> =0 F <sub>G</sub> =0 F <sub>P</sub> =0	GENERAL TOLERANCES (UNLESS SPECIFIED)		DIMENSION STYLE		SCALE	DESIGN UNITS	THIRD ANGLE PROJECTION			
				IN/MM		NTS	METRIC				
				mm	INCH	DRAWN BY	DATE	TITLE			
				± ---	± ---	FCS00	2012/07/02	SIM CARD CONNECTOR BLOCK SIM CONNECTOR 0.3MM HEIGHT			
		± ---	± ---	CHECKED BY	DATE	MOLEX INCORPORATED					
		± 0.15	± ---	JTAN02	2012/07/20	DOCUMENT NO.					
		± ---	± ---	APPROVED BY	DATE	SHEET NO.					
		± ---	± ---	KHLIM	2012/07/23	1 OF 2					
		ANGULAR ± 3 °		MATERIAL NO.		78545-0010					
		DRAFT WHERE APPLICABLE MUST REMAIN WITHIN DIMENSIONS		SIZE		THIS DRAWING CONTAINS INFORMATION THAT IS PROPRIETARY TO MOLEX INCORPORATED AND SHOULD NOT BE USED WITHOUT WRITTEN PERMISSION					
				A3		SD-78545-003					



RECOMMENDED PCB LAYOUT  
PCB TOLERANCE: ±0.05mm

-  SOLDERING AREA
-  NO WIRING AREA
-  CONNECTOR BOUNDARY

<b>NEW RELEASE</b> EC NO: S2013-0001 DRWN:FCS00 CHKD:JTAN02 APPR:KHLIM	2012/07/02 2012/07/20 2012/07/23	DESCRIPTION 1	QUALITY SYMBOLS	GENERAL TOLERANCES (UNLESS SPECIFIED)	DIMENSION STYLE	SCALE	DESIGN UNITS	THIRD ANGLE PROJECTION														
	$F_A = 0$ $F_C = 0$ $F_P = 0$		<table border="1"> <thead> <tr> <th></th> <th>mm</th> <th>INCH</th> </tr> </thead> <tbody> <tr> <td>4 PLACES</td> <td>± ---</td> <td>± ---</td> </tr> <tr> <td>3 PLACES</td> <td>± ---</td> <td>± ---</td> </tr> <tr> <td>2 PLACES</td> <td>± 0.15</td> <td>± ---</td> </tr> <tr> <td>1 PLACE</td> <td>± ---</td> <td>± ---</td> </tr> </tbody> </table>		mm	INCH	4 PLACES	± ---	± ---	3 PLACES	± ---	± ---	2 PLACES	± 0.15	± ---	1 PLACE	± ---	± ---	IN/MM	NTS	METRIC	
			mm	INCH																		
	4 PLACES		± ---	± ---																		
3 PLACES	± ---	± ---																				
2 PLACES	± 0.15	± ---																				
1 PLACE	± ---	± ---																				
	ANGULAR ± 3 °	DRAWN BY	DATE	TITLE	<b>SIM CARD CONNECTOR</b> <b>BLOCK SIM CONNECTOR</b> <b>0.3MM HEIGHT</b>																	
		FCS00	2012/07/02																			
		CHECKED BY	DATE		 <b>MOLEX INCORPORATED</b>																	
		JTAN02	2012/07/20																			
		APPROVED BY	DATE		MATERIAL NO.	DOCUMENT NO.	SHEET NO.															
		KHLIM	2012/07/23		78545-0010	SD-78545-003	2 OF 2															
					THIS DRAWING CONTAINS INFORMATION THAT IS PROPRIETARY TO MOLEX INCORPORATED AND SHOULD NOT BE USED WITHOUT WRITTEN PERMISSION																	