



Chipsmall Limited consists of a professional team with an average of over 10 year of expertise in the distribution of electronic components. Based in Hongkong, we have already established firm and mutual-benefit business relationships with customers from,Europe,America and south Asia,supplying obsolete and hard-to-find components to meet their specific needs.

With the principle of “Quality Parts,Customers Priority,Honest Operation,and Considerate Service”,our business mainly focus on the distribution of electronic components. Line cards we deal with include Microchip,ALPS,ROHM,Xilinx,Pulse,ON,Everlight and Freescale. Main products comprise IC,Modules,Potentiometer,IC Socket,Relay,Connector.Our parts cover such applications as commercial,industrial, and automotives areas.

We are looking forward to setting up business relationship with you and hope to provide you with the best service and solution. Let us make a better world for our industry!



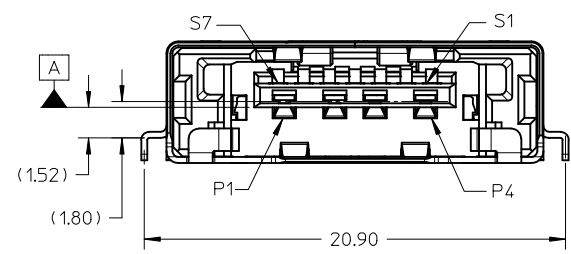
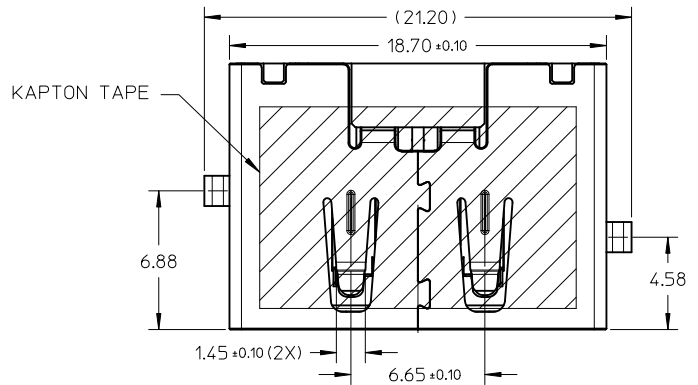
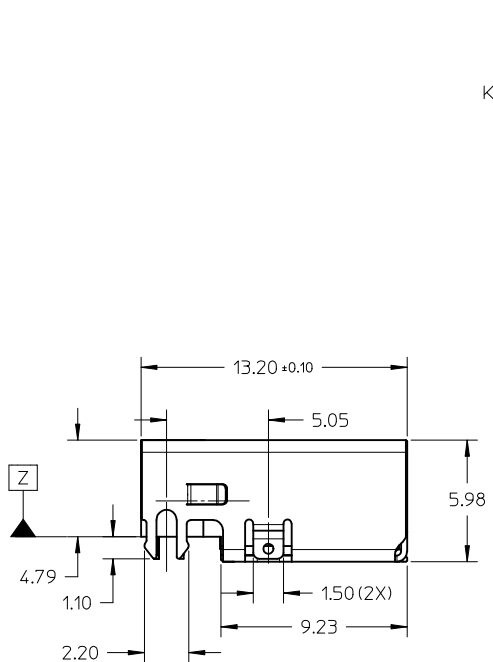
## Contact us

Tel: +86-755-8981 8866 Fax: +86-755-8427 6832

Email & Skype: info@chipsmall.com Web: www.chipsmall.com

Address: A1208, Overseas Decoration Building, #122 Zhenhua RD., Futian, Shenzhen, China

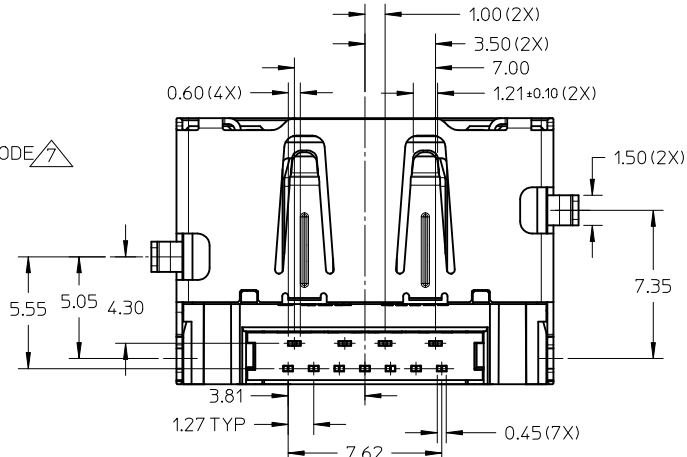
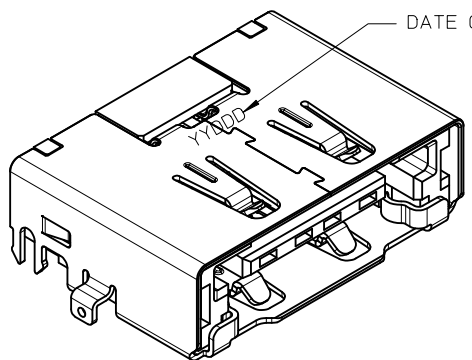




NOTES:  
 1. MATERIAL:  
 HOUSING: HIGH TEMPERATURE THERMOPLASTIC, GLASS FILLED, BLACK, UL94V-0.  
 BASEPLATE: HIGH TEMPERATURE THERMOPLASTIC, GLASS FILLED, BLACK, UL94V-0.  
 TERMINAL: COPPER ALLOY.  
 METAL SHELL: STAINLESS STEEL.  
 2. PLATING FINISHES  
 TERMINAL: SEE TABLE  
 METAL SHELL PLATING: 1.27µm MIN SOLDERABLE NICKEL PLATING.  
 3. PRODUCT SPECIFICATION: PS-78560-001  
 4. PACKAGE SPECIFICATION: PK-78560-001  
 5. MATES WITH TYPICAL ESATA AND USB COMPLIANT CABLES  
 6. PRODUCT COMPLIANT TO Rohs DIRECTIVE 2002/95/EC AND ELV DIRECTIVE 2000/53/EC.  
 △ DATE CODE: YYDDD, 'YY' REPRESENTS YEAR, 'DDD' REPRESENTS DAY.

PIN ASSIGNMENT

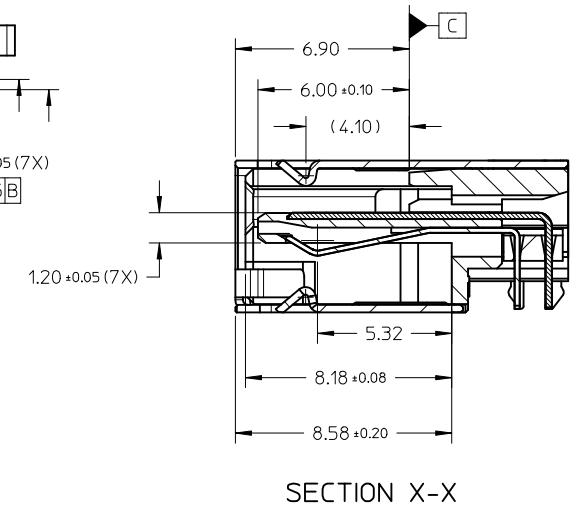
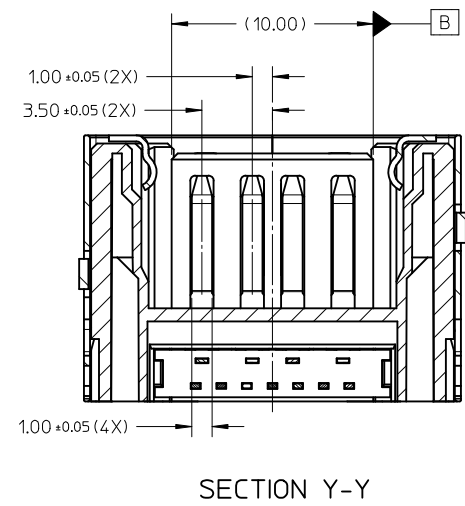
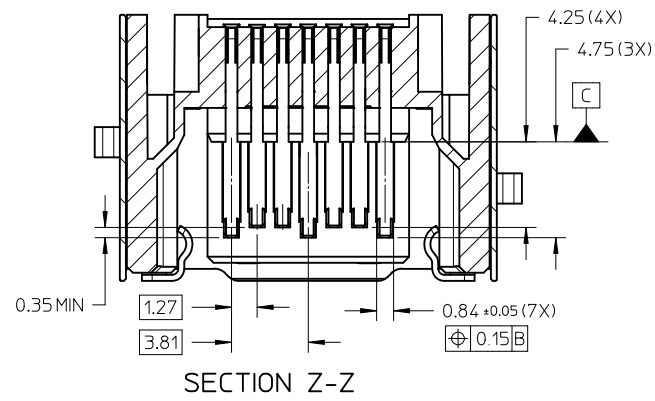
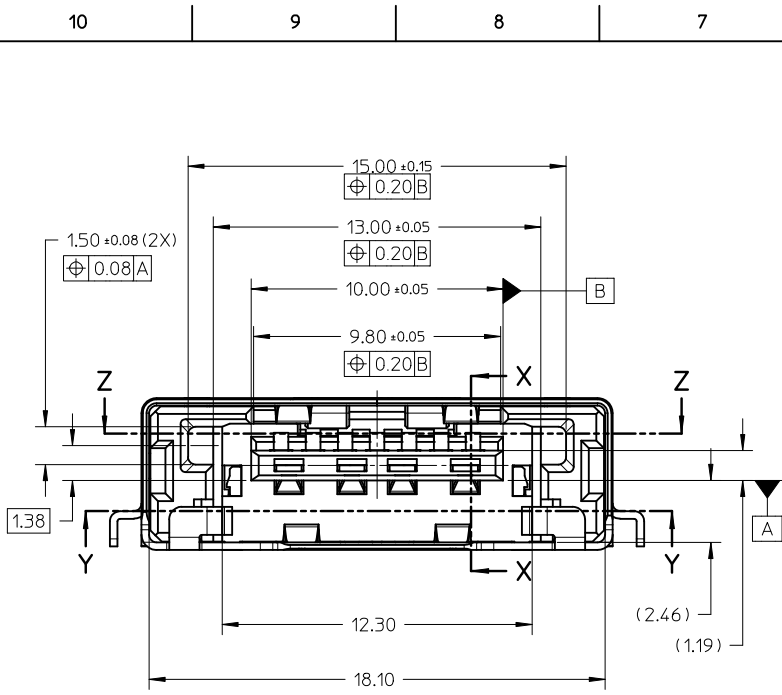
USB		ESATA	
NAME	TYPE	NAME	TYPE
P1	VBUS	S1	GND
P2	D-	S2	A+
P3	D+	S3	A-
P4	GND	S4	GND
		S5	B-
		S6	B+
		S7	GND



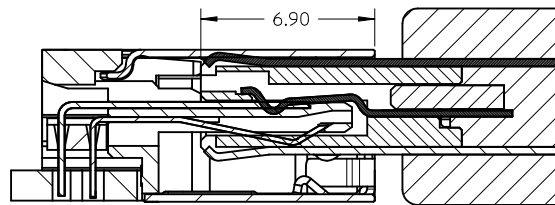
PLATING SPECIFICATION

PART NAME	CONTACT MATING AREA	SOLDERTAIL AREA
78560-0001	GOLD (0.76µm MIN.)	MATTE TIN (2.54µm MIN.)
	OVER NICKEL (1.27µm MIN.) PLATING	
78560-0002	GOLD (0.38µm MIN.)	MATTE TIN (2.54µm MIN.)
	OVER NICKEL (1.27µm MIN.) PLATING	

UPDATE TIN PLATING EC NO: S2011-0224 DRW:KHLIM 2010/09/09 CHKD:JTAN02 2010/09/20 APPR:SKTOH 2010/09/24	QUALITY SYMBOLS F <sub>A</sub> =0 F <sub>C</sub> =0 F <sub>P</sub> =0	GENERAL TOLERANCES (UNLESS SPECIFIED) mm INCH 4 PLACES ± --- ± --- 3 PLACES ± --- ± --- 2 PLACES ± 0.25 ± --- 1 PLACE ± --- ± --- ANGULAR ± 3°	DIMENSION STYLE MM ONLY DRAWN BY: KHLIM DATE: 2009/10/09 CHECKED BY: CGOH DATE: 2009/12/01 APPROVED BY: BOKOK DATE: 2010/04/30	SCALE: NTS DESIGN UNITS: METRIC THIRD ANGLE PROJECTION	ESATA AND USB COMBO TOP MOUNT/ SINK TYPE 1.80MM HEIGHT MOLEX INCORPORATED SD-78560-001 SHEET NO. 1 OF 4
	DRAFT WHERE APPLICABLE MUST REMAIN WITHIN DIMENSIONS	MATERIAL NO. SEE TABLE DOCUMENT NO.	SIZE: A3 THIS DRAWING CONTAINS INFORMATION THAT IS PROPRIETARY TO MOLEX INCORPORATED AND SHOULD NOT BE USED WITHOUT WRITTEN PERMISSION		
	REV: A6	DESCRIPTION:	TITLE:		
	DATE CODE:	DATE:	DATE:		

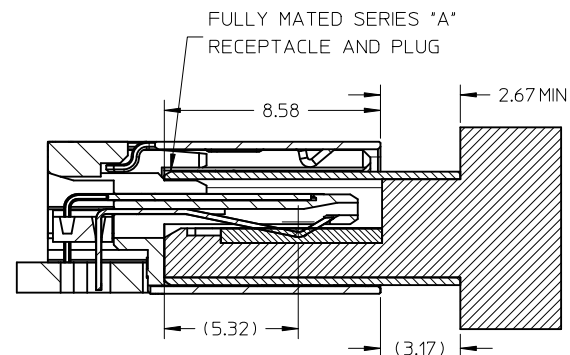


<b>UPDATE TIN PLATING</b> EC NO: S2011-0224 DRW:KHLIM 2010/09/09 CHKD:JTAN02 2010/09/20 APPR:SKTOH 2010/09/24	DESCRIPTION REV	QUALITY SYMBOLS $F_A=0$ $F_C=0$ $F_B=0$	GENERAL TOLERANCES (UNLESS SPECIFIED)		DIMENSION STYLE <b>MM ONLY</b>		SCALE <b>NTS</b>	DESIGN UNITS <b>METRIC</b>	THIRD ANGLE PROJECTION																
			<table border="1"> <thead> <tr> <th></th> <th>mm</th> <th>INCH</th> </tr> </thead> <tbody> <tr> <td>4 PLACES</td> <td>± ---</td> <td>± ---</td> </tr> <tr> <td>3 PLACES</td> <td>± ---</td> <td>± ---</td> </tr> <tr> <td>2 PLACES</td> <td>± 0.25</td> <td>± ---</td> </tr> <tr> <td>1 PLACE</td> <td>± ---</td> <td>± ---</td> </tr> </tbody> </table>		mm	INCH	4 PLACES	± ---	± ---	3 PLACES	± ---	± ---	2 PLACES	± 0.25	± ---	1 PLACE	± ---	± ---	DRAWN BY KHLIM	DATE 2009/10/09	TITLE <b>ESATA AND USB COMBO TOP MOUNT/ SINK TYPE 1.80MM HEIGHT</b>				
			mm	INCH																					
		4 PLACES	± ---	± ---																					
3 PLACES	± ---	± ---																							
2 PLACES	± 0.25	± ---																							
1 PLACE	± ---	± ---																							
	ANGULAR ± 3 °	CHECKED BY CGOH	DATE 2009/12/01	MOLEX INCORPORATED																					
<b>A6</b>		DRAFT WHERE APPLICABLE MUST REMAIN WITHIN DIMENSIONS		APPROVED BY BOKOK	DATE 2010/04/30	MATERIAL NO. <b>SEE TABLE</b>	DOCUMENT NO. <b>SD-78560-001</b>	SHEET NO. <b>2 OF 4</b>																	



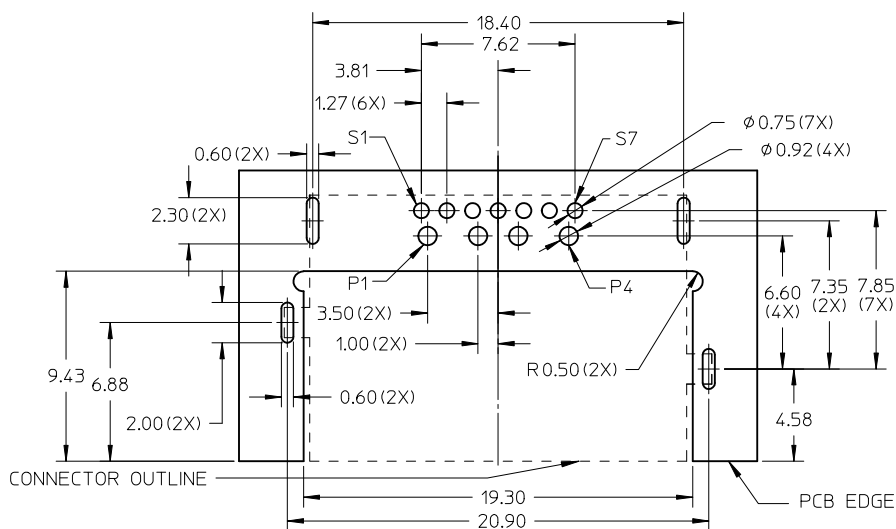
MATING WITH ESATA CABLE

SECTION W-W



MATING WITH USB CABLE

SECTION U-U



CONNECTOR OUTLINE

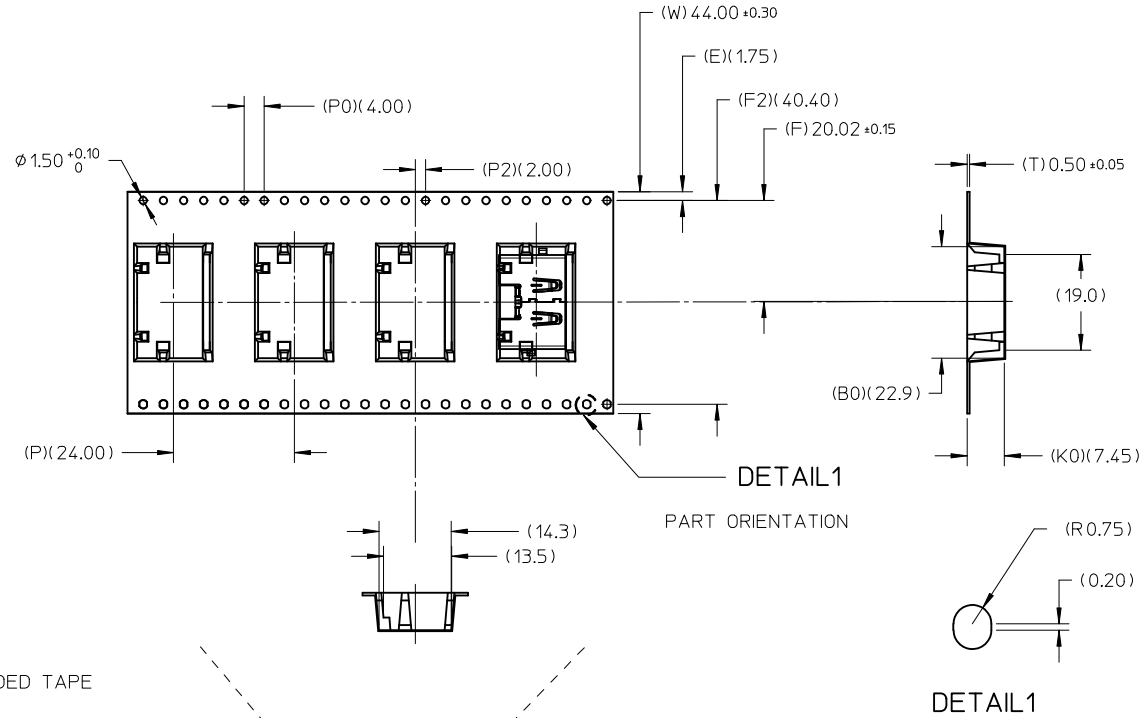
PCB EDGE

RECOMMEND PCB LAYOUT T=1.20

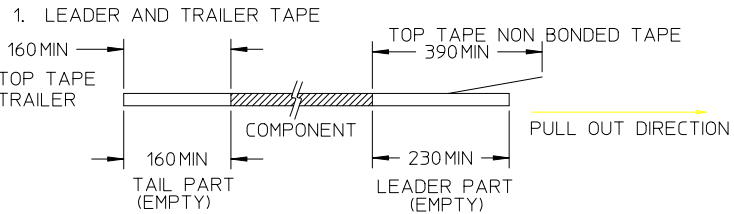
PCB TOLERANCE : ±0.05

UPDATE TIN PLATING EC NO: S2011-0224 DRW:KHLIM 2010/09/09 CHKD:JTAN02 2010/09/20 APPR:SKTOH 2010/09/24	QUALITY SYMBOLS $F_A=0$ $F_C=0$ $F_P=0$	GENERAL TOLERANCES (UNLESS SPECIFIED)		DIMENSION STYLE <b>MM ONLY</b>		SCALE <b>NTS</b>	DESIGN UNITS <b>METRIC</b>	THIRD ANGLE PROJECTION		
			mm	INCH	DRAWN BY	DATE	TITLE			
		4 PLACES	± ---	± ---	KHLIM	2009/10/09	<b>ESATA AND USB COMBO TOP MOUNT/ SINK TYPE 1.80MM HEIGHT</b>			
		3 PLACES	± ---	± ---	CHECKED BY	DATE				
2 PLACES	± 0.25	± ---	CGOH	2009/12/01	<b>MOLEX INCORPORATED</b>					
1 PLACE	± ---	± ---	APPROVED BY	DATE						
	ANGULAR ± 3 °		BOKOK	2010/04/30	MATERIAL NO.	DOCUMENT NO.			SHEET NO.	
	DRAFT WHERE APPLICABLE MUST REMAIN WITHIN DIMENSIONS		SEE TABLE		SD-78560-001			3 OF 4		
A6	REV	THIS DRAWING CONTAINS INFORMATION THAT IS PROPRIETARY TO MOLEX INCORPORATED AND SHOULD NOT BE USED WITHOUT WRITTEN PERMISSION								

CUSTOMER PULLOUT DIRECTION



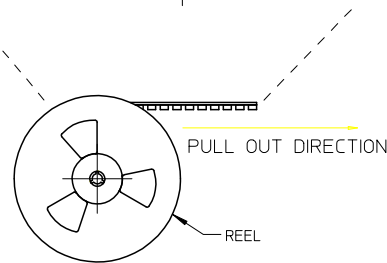
NOTES:



2. PEELING OFF FORCE OF THE TOP TAPE: 10-130gf MAX.  
(PEELING DIRECTION AS SHOWN IN FOLLOWING FIGURE)



- 3. PACKAGING QTY: 320 PCS/REEL
- 4. PACKAGING STANDARD IS AS PER EIA-481.
- 5. MATERIAL: POLYSTYRENE. ANTISTATIC.
- 6. COLOR: BLACK



UPDATE TIN PLATING EC NO: S2011-0224 DRW:KHLIM CHKD:JTAN02 APPR:SKTOH	2010/09/09 2010/09/20 2010/09/24	DESCRIPTION QUALITY SYMBOLS $F_A=0$ $F_C=0$ $F_P=0$	GENERAL TOLERANCES (UNLESS SPECIFIED)		DIMENSION STYLE MM ONLY		SCALE NTS	DESIGN UNITS METRIC	THIRD ANGLE PROJECTION			
				4 PLACES ± --- ± --- 3 PLACES ± --- ± --- 2 PLACES ± 0.25 ± --- 1 PLACE ± --- ± ---	mm    INCH	DRAWN BY KHLIM	DATE 2009/10/09	TITLE ESATA AND USB COMBO TOP MOUNT/ SINK TYPE 1.80MM HEIGHT				
				ANGULAR ± 3 °	DRAFT WHERE APPLICABLE MUST REMAIN WITHIN DIMENSIONS		CHECKED BY CGOH	DATE 2009/12/01	MOLEX INCORPORATED			
	A6		REV		SEE TABLE		APPROVED BY BOKOK	DATE 2010/04/30	DOCUMENT NO. SD-78560-001		SHEET NO. 4 OF 4	