



Chipsmall Limited consists of a professional team with an average of over 10 year of expertise in the distribution of electronic components. Based in Hongkong, we have already established firm and mutual-benefit business relationships with customers from,Europe,America and south Asia,supplying obsolete and hard-to-find components to meet their specific needs.

With the principle of “Quality Parts,Customers Priority,Honest Operation,and Considerate Service”,our business mainly focus on the distribution of electronic components. Line cards we deal with include Microchip,ALPS,ROHM,Xilinx,Pulse,ON,Everlight and Freescale. Main products comprise IC,Modules,Potentiometer,IC Socket,Relay,Connector.Our parts cover such applications as commercial,industrial, and automotives areas.

We are looking forward to setting up business relationship with you and hope to provide you with the best service and solution. Let us make a better world for our industry!



Contact us

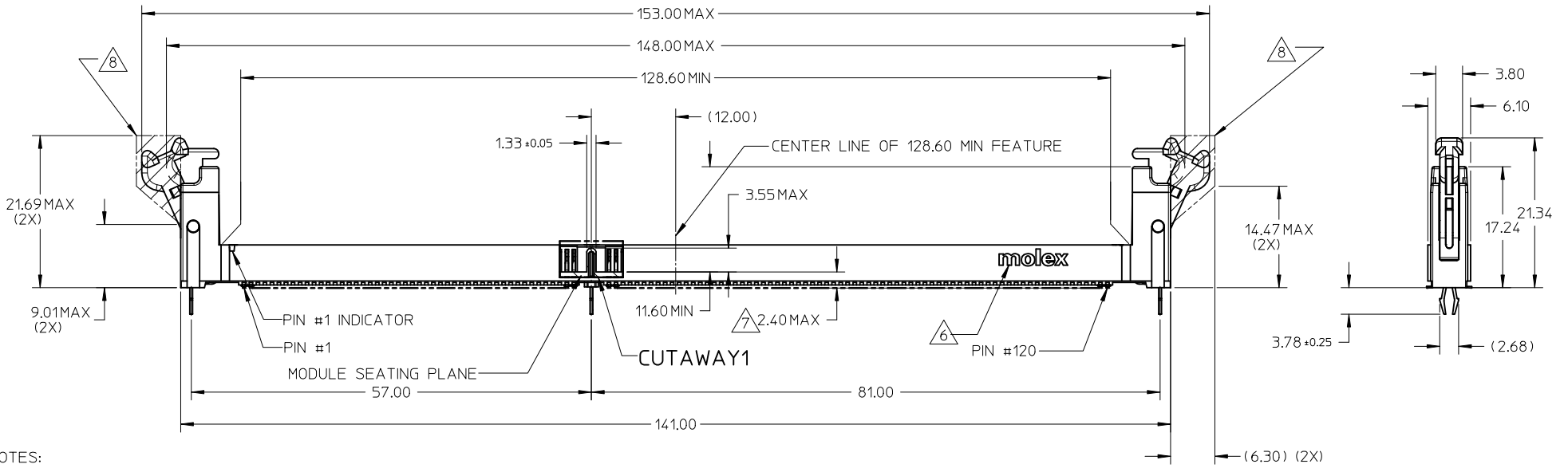
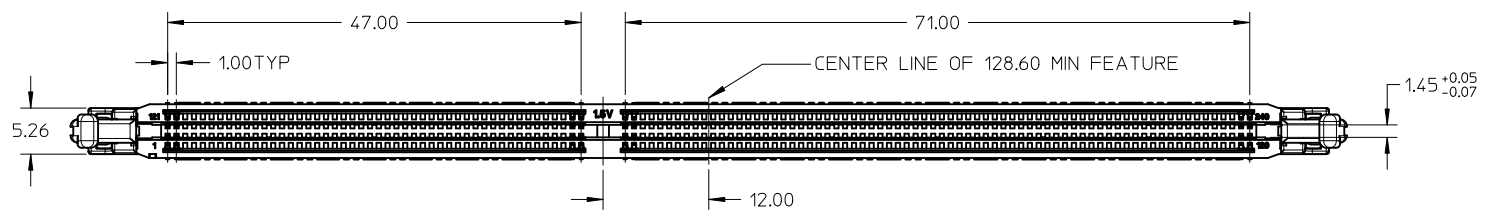
Tel: +86-755-8981 8866 Fax: +86-755-8427 6832

Email & Skype: info@chipsmall.com Web: www.chipsmall.com

Address: A1208, Overseas Decoration Building, #122 Zhenhua RD., Futian, Shenzhen, China



10 9 8 7 6 5 4 3 2 1

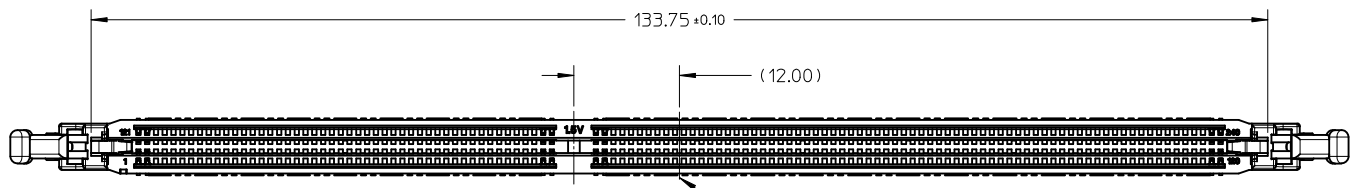


- NOTES:
- MATERIAL : HOUSING - LCP, GLASS FILLED, UL 94V-0
COLOUR : BLACK.
LATCH - NYLON, GLASS FILLED, UL 94V-0
COLOUR : SEE TABLE ON SHEET 5.
TERMINAL : COPPER ALLOY.
 - FINISHES - SEE TABLE ON SHEET 5.
 - PRODUCT SPECIFICATION : SEE TABLE ON SHEET 5.
 - PACKAGING SPECIFICATION: PRODUCT SHALL BE PACKED IN TRAY,
SEE SHEET 5
 - CARD SLOT ACCEPTS 1.27±0.10MM MODULE THICKNESS
(MEASURED FROM P.C. PADS).
6. MOLEX LOGO, DATE & PART NO. INDICATED ON HOUSING.
 7. MODULE SEATING PLANE FROM TOP OF PCB.
 8. KEEP OUT ZONE RESERVED FOR LATCH.
 9. KEEP OUT AREA IS THE AREA WHERE THE CONNECTOR
(INCLUDED LATCHES IN OPENING POSITION) IS MOUNTED ON THE PCB.

THIS DESIGN IS BASED ON DESIGN OBJECTIVES AND IS STRICTLY TENTATIVE. IT MAY CHANGE BASED ON RESULTS OF ADDITIONAL DESIGN REVIEWS AND VERIFICATIONS.

FORK LOCK CHANGE EC NO: S2012-0910 DRW: NCTEH CHKD: CGTAN APPR: SHLENI 2012/03/23 2012/06/06 2012/06/19	QUALITY SYMBOLS $F_A=0$ $F_G=0$ $F_B=0$	GENERAL TOLERANCES (UNLESS SPECIFIED)		DIMENSION STYLE MM ONLY		SCALE NTS	DESIGN UNITS METRIC	THIRD ANGLE PROJECTION	
		4 PLACES ± --- ± --- 3 PLACES ± --- ± --- 2 PLACES ± 0.25 ± --- 1 PLACE ± --- ± --- 0 PLACE ± ±	mm INCH	DRAWN BY JAKEEMEW	DATE 2010/03/25	TITLE DDR3 DIMM, LSP STD, AERO 1.00MM PITCH, 240 CKT VERTICAL, SMT, LOWLLCR			
		ANGULAR ± 3 °		CHECKED BY CGTAN	DATE 2010/09/30	molex			
		DRAFT WHERE APPLICABLE MUST REMAIN WITHIN DIMENSIONS		APPROVED BY SHLENI	DATE 2010/12/24				

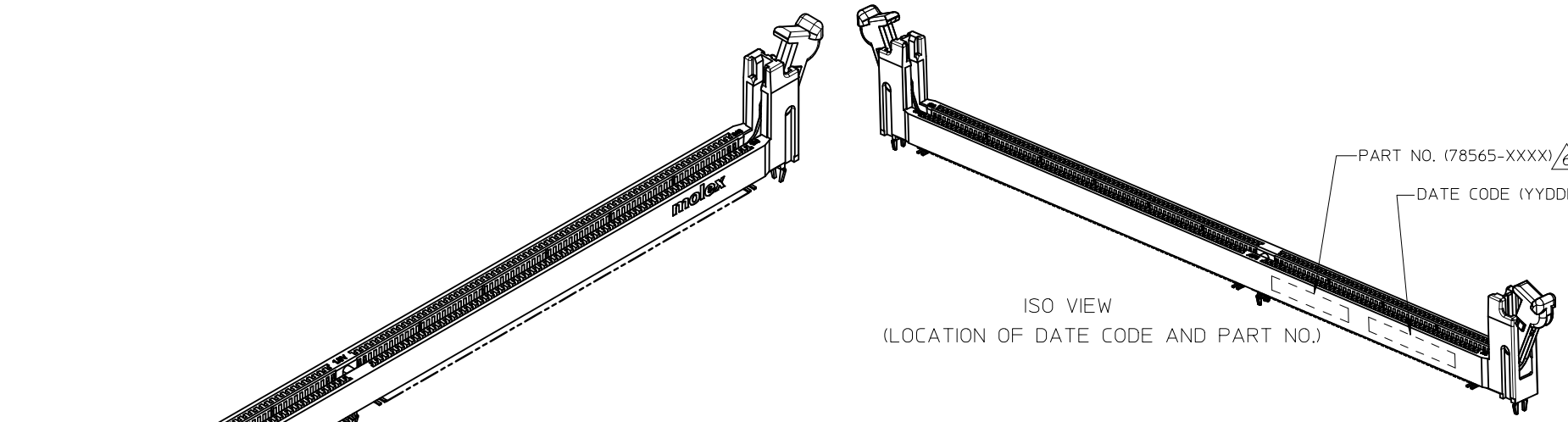
9 8 7 6 5 4 3 2 1



TOP VIEW
(LATCHES ARE IN THE OPEN POSITION) — CENTER LINE OF 128.60 MIN FEATURE



BOTTOM VIEW
(LATCHES ARE IN THE OPEN POSITION)



ISO VIEW
(LOCATION OF DATE CODE AND PART NO.)

PART NO. (78565-XXXX) \triangle 6

DATE CODE (YYDDD) \triangle 6

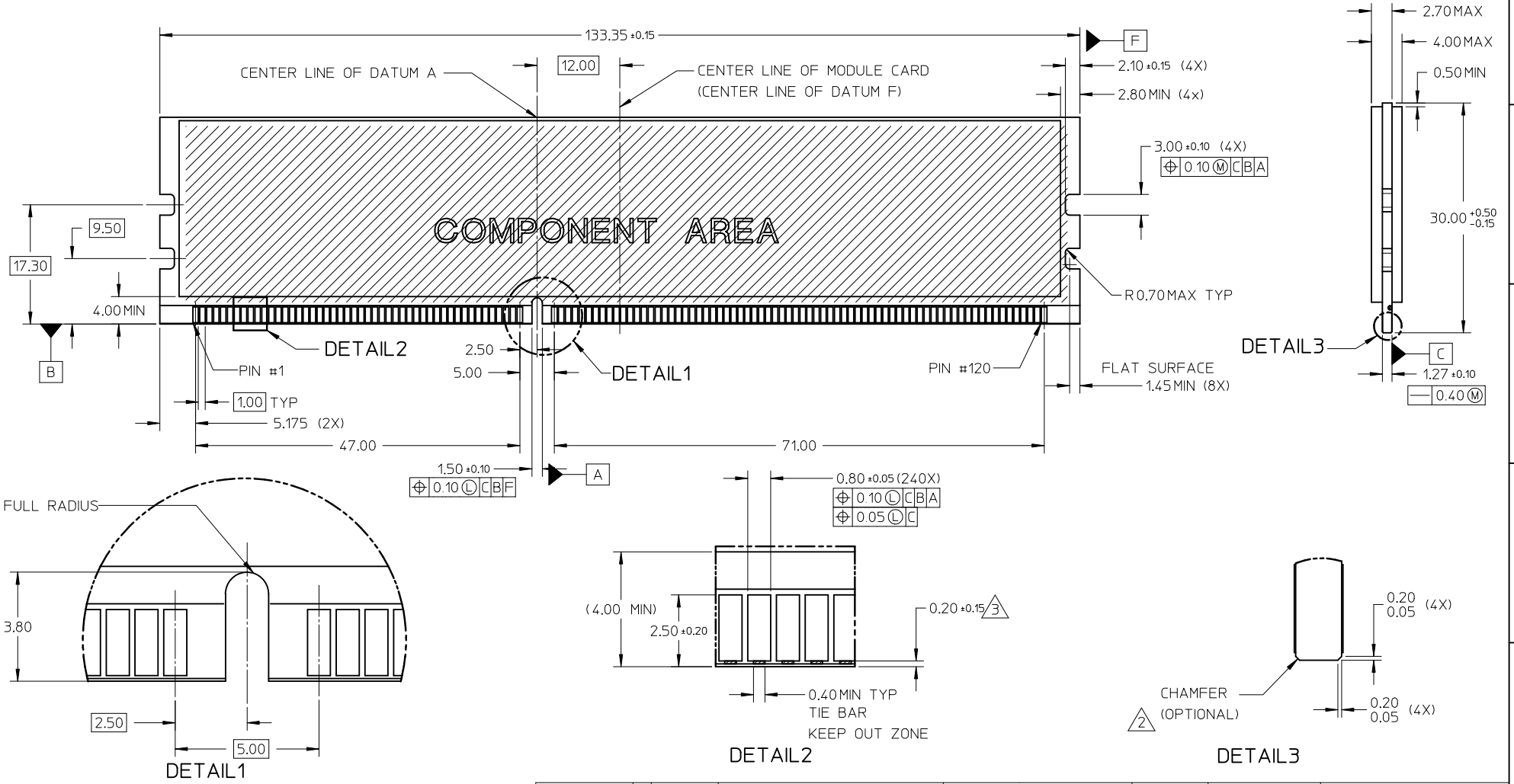


ISO VIEW
(LATCHES ARE IN THE OPEN POSITION)

FORK LOCK CHANGE EC NO: S2012-0910 DRWN: CCTEH 2012/03/27 CHKD: CGTAN 2012/06/06 APPR: SHLENI 2012/06/19	QUALITY SYMBOLS $\nabla_F = 0$ $\nabla_{E_1} = 0$ $\nabla_{E_2} = 0$	GENERAL TOLERANCES (UNLESS SPECIFIED) <table border="1"> <thead> <tr> <th></th> <th>mm</th> <th>INCH</th> </tr> </thead> <tbody> <tr> <td>4 PLACES</td> <td>± ---</td> <td>± ---</td> </tr> <tr> <td>3 PLACES</td> <td>± ---</td> <td>± ---</td> </tr> <tr> <td>2 PLACES</td> <td>± 0.25</td> <td>± ---</td> </tr> <tr> <td>1 PLACE</td> <td>± ---</td> <td>± ---</td> </tr> <tr> <td>0 PLACE</td> <td>±</td> <td>±</td> </tr> </tbody> </table>		mm	INCH	4 PLACES	± ---	± ---	3 PLACES	± ---	± ---	2 PLACES	± 0.25	± ---	1 PLACE	± ---	± ---	0 PLACE	±	±	DIMENSION STYLE MM ONLY	SCALE NTS	DESIGN UNITS METRIC	THIRD ANGLE PROJECTION
		mm	INCH																					
	4 PLACES	± ---	± ---																					
	3 PLACES	± ---	± ---																					
2 PLACES	± 0.25	± ---																						
1 PLACE	± ---	± ---																						
0 PLACE	±	±																						
REV: 5	DRAFT WHERE APPLICABLE MUST REMAIN WITHIN DIMENSIONS	ANGULAR ± 3 °	DRAWN BY: JAKEEMEW CHECKED BY: CGTAN APPROVED BY: SHLENI	DATE: 2010/03/25 DATE: 2010/09/30 DATE: 2010/12/24	TITLE: DDR3 DIMM, LSP STD, AERO 1.00MM PITCH, 240 CKT VERTICAL, SMT, LOWLLCR	MATERIAL NO.																		
			SEE TABLE	DOCUMENT NO. SD-78565-001	SHEET NO. 2 OF 5																			
			THIS DRAWING CONTAINS INFORMATION THAT IS PROPRIETARY TO MOLEX INCORPORATED AND SHOULD NOT BE USED WITHOUT WRITTEN PERMISSION																					

10 9 8 7 6 5 4 3 2 1

MODULE CARD
 DDR3 DUAL IN-LINE MEMORY MODULE FAMILY 1.00MM CONTACT CENTERS
 (JEDEC MO-269, ISSUE B, APRIL/06)

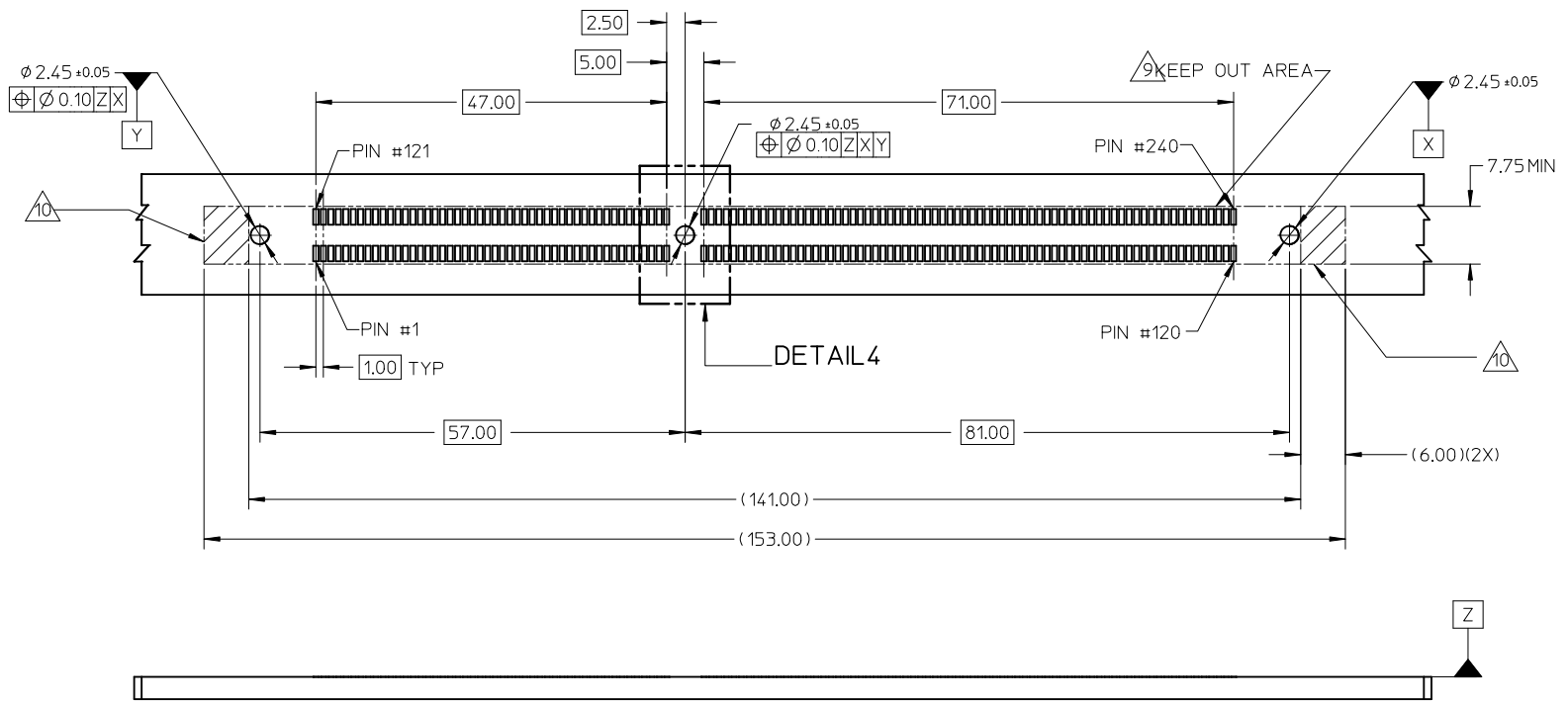


NOTES:
 1. RECOMMENDED PLATING FOR CONTACT PADS:
 PREFERRED: 0.76 MICROMETERS GOLD PLATING MIN OVER 2.00 MICROMETERS NICKEL.
 ALTERNATIVE: 0.05-0.75 MICROMETERS GOLD PLATING OVER 2.00 MICROMETERS NICKEL MUST USE AN ELECTRONIC CONTACT GRADE CORROSIVE BARRIER LUBRICANT.
 2. CHAMFER IS OPTIONAL AND IS NOT TO HIT THE GOLD PADS.
 3. LEADING EDGE OF GOLD PADS SPECIFIED BY KEEPOUT ZONE SHALL BE FREE OF BURRS AND EXTERNAL TIE BARS.

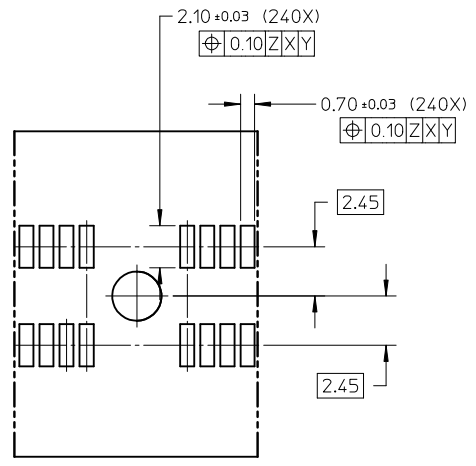
FORK LOCK CHANGE IEC NO: S2012-0910 DRW: CCTEH 2012/03/23 CHK: CGTAN 2012/06/06 APPR: SHLENI 2012/06/19 REV 5	QUALITY SYMBOLS $F_A=0$ $F_B=0$ $F_C=0$	GENERAL TOLERANCES (UNLESS SPECIFIED) <table border="1"> <thead> <tr> <th></th> <th>mm</th> <th>INCH</th> </tr> </thead> <tbody> <tr> <td>4 PLACES</td> <td>± ---</td> <td>± ---</td> </tr> <tr> <td>3 PLACES</td> <td>± ---</td> <td>± ---</td> </tr> <tr> <td>2 PLACES</td> <td>± 0.25</td> <td>± ---</td> </tr> <tr> <td>1 PLACE</td> <td>± ---</td> <td>± ---</td> </tr> <tr> <td>0 PLACE</td> <td>±</td> <td>±</td> </tr> </tbody> </table>		mm	INCH	4 PLACES	± ---	± ---	3 PLACES	± ---	± ---	2 PLACES	± 0.25	± ---	1 PLACE	± ---	± ---	0 PLACE	±	±	DIMENSION STYLE MM ONLY	SCALE NTS	DESIGN UNITS METRIC	THIRD ANGLE PROJECTION
		mm	INCH																					
	4 PLACES	± ---	± ---																					
	3 PLACES	± ---	± ---																					
	2 PLACES	± 0.25	± ---																					
1 PLACE	± ---	± ---																						
0 PLACE	±	±																						
		DRAWN BY JAKEEMEW	DATE 2010/03/25	TITLE DDR3 DIMM, LSP STD, AERO 1.00MM PITCH, 240 CKT VERTICAL, SMT, LOWLLCR																				
		CHECKED BY CGTAN	DATE 2010/09/30																					
		APPROVED BY SHLENI	DATE 2010/12/24																					
		MATERIAL NO. SEE TABLE		DOCUMENT NO. SD-78565-001	SHEET NO. 3 OF 5																			

9 8 7 6 5 4 3 2 1

10 9 8 7 6 5 4 3 2 1



RECOMMENDED PCB THICKNESS = 1.57mm ~ 3.18mm
 RECOMMENDED STENCIL THICKNESS = 150 MICROMETERS



DETAIL 4

FORK LOCK CHANGE EC NO: S2012-0910 DRW: CCTEH 2012/03/23 CHKD: CGTAN 2012/06/06 APPR: SHLENI 2012/06/19	QUALITY SYMBOLS	GENERAL TOLERANCES (UNLESS SPECIFIED)		DIMENSION STYLE MM ONLY		SCALE NTS	DESIGN UNITS METRIC	THIRD ANGLE PROJECTION
	$\nabla_A = 0$	4 PLACES	mm	INCH	DRAWN BY JAKEEMEW	DATE 2010/03/25	TITLE DDR3 DIMM, LSP STD, AERO 1.00MM PITCH, 240 CKT VERTICAL, SMT, LOWLLCR	
	$\nabla_G = 0$	3 PLACES	± ---	± ---	CHECKED BY CGTAN	DATE 2010/09/30	molex DOCUMENT NO. SD-78565-001 SHEET NO. 4 OF 5	
	$\nabla_P = 0$	2 PLACES	± 0.25	± ---	APPROVED BY SHLENI	DATE 2010/12/24		
		1 PLACE	± ---	± ---	MATERIAL NO. SEE TABLE		THIS DRAWING CONTAINS INFORMATION THAT IS PROPRIETARY TO MOLEX INCORPORATED AND SHOULD NOT BE USED WITHOUT WRITTEN PERMISSION	
		0 PLACE	±	±	DRAFT WHERE APPLICABLE MUST REMAIN WITHIN DIMENSIONS			

9 8 7 6 5 4 3 2 1

PART NO.	VOLTAGE KEY POSITION	PLATING OPTION	LATCH COLOR	PACKAGING SPEC	PRODUCT SPEC
78565-0001	CENTER (1.5V)	0.76µM (30µM) MIN. GOLD ON CONTACT. 2.54µM (100µM) MIN. TIN (MATTE) ON SOLDER TAIL. 1.27µM (50µM) MIN. NICKEL UNDERPLATE.	BLACK	SOFT TRAY PK-78565-001	PS-78565-001
78565-0002			NATURAL (OFF-WHITE)		
78565-0501			BLACK	HARD TRAY PK-78565-002	
78565-0502			NATURAL (OFF-WHITE)		

FORK LOCK CHANGE EC NO: S2012-0910 DRWN: CCTEH 2012/03/23 CH'KD: CGTAN 2012/06/06 APPR: SHLENI 2012/06/19 REV 5	QUALITY SYMBOLS	GENERAL TOLERANCES (UNLESS SPECIFIED)	DIMENSION STYLE	SCALE	DESIGN UNITS	THIRD ANGLE PROJECTION
	▽=0	4 PLACES ± --- ± ---	MM ONLY	NTS	METRIC	TITLE DDR3 DIMM, LSP STD, AERO 1.00MM PITCH, 240 CKT VERTICAL, SMT, LOWLLCR
	▽=0	3 PLACES ± --- ± ---	mm INCH			
	▽=0	2 PLACES ± 0.25 ± ---	DRAWN BY DATE			molex MATERIAL NO. DOCUMENT NO. SHEET NO. SEE TABLE SD-78565-001 5 OF 5
		1 PLACE ± --- ± ---	CHECKED BY DATE			
	0 PLACE ± ±	APPROVED BY DATE				
	ANGULAR ± 3 °	DRAFT WHERE APPLICABLE MUST REMAIN WITHIN DIMENSIONS	SIZE A3	THIS DRAWING CONTAINS INFORMATION THAT IS PROPRIETARY TO MOLEX INCORPORATED AND SHOULD NOT BE USED WITHOUT WRITTEN PERMISSION		