



Chipsmall Limited consists of a professional team with an average of over 10 year of expertise in the distribution of electronic components. Based in Hongkong, we have already established firm and mutual-benefit business relationships with customers from,Europe,America and south Asia,supplying obsolete and hard-to-find components to meet their specific needs.

With the principle of “Quality Parts,Customers Priority,Honest Operation,and Considerate Service”,our business mainly focus on the distribution of electronic components. Line cards we deal with include Microchip,ALPS,ROHM,Xilinx,Pulse,ON,Everlight and Freescale. Main products comprise IC,Modules,Potentiometer,IC Socket,Relay,Connector.Our parts cover such applications as commercial,industrial, and automotives areas.

We are looking forward to setting up business relationship with you and hope to provide you with the best service and solution. Let us make a better world for our industry!



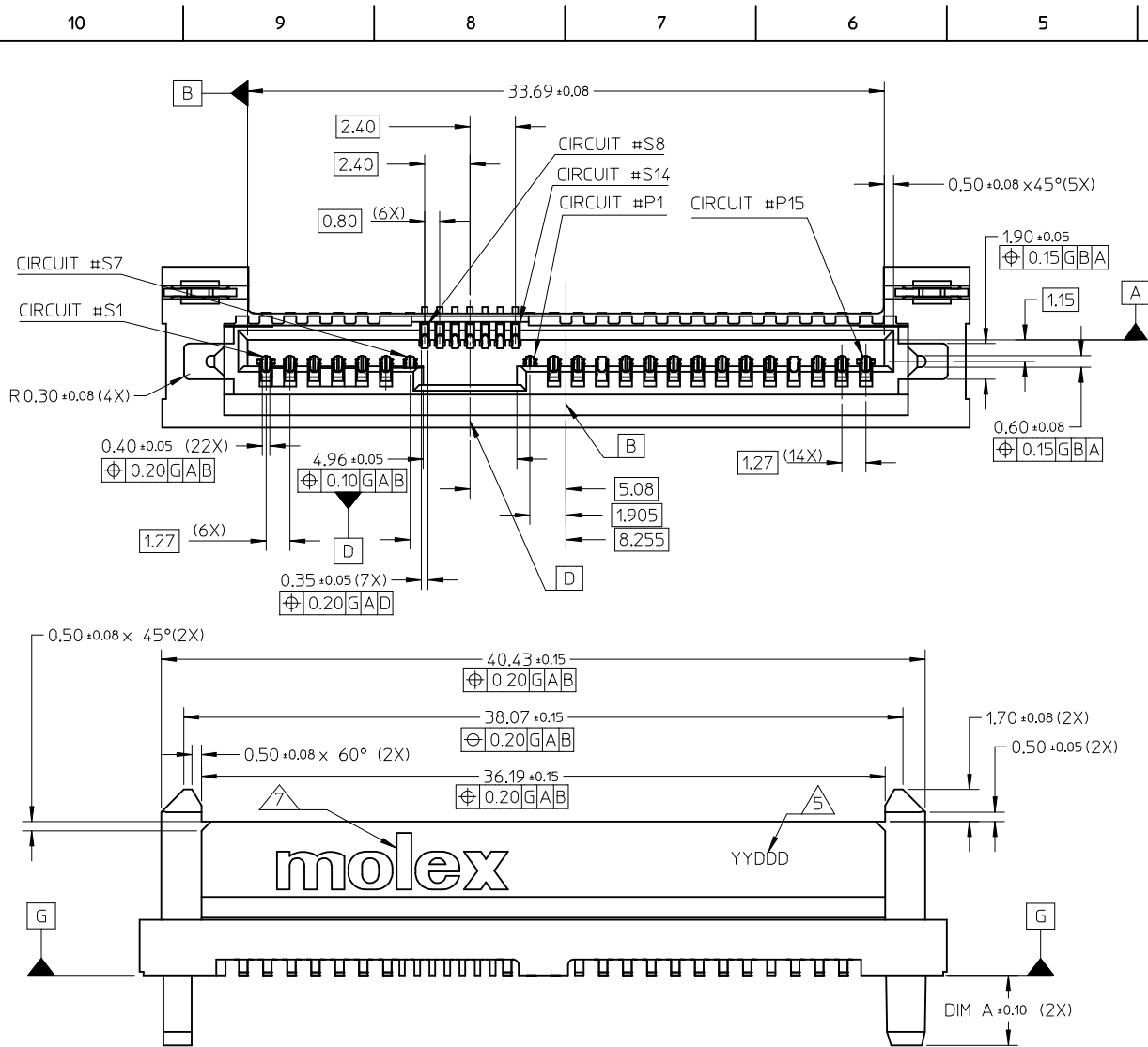
Contact us

Tel: +86-755-8981 8866 Fax: +86-755-8427 6832

Email & Skype: info@chipsmall.com Web: www.chipsmall.com

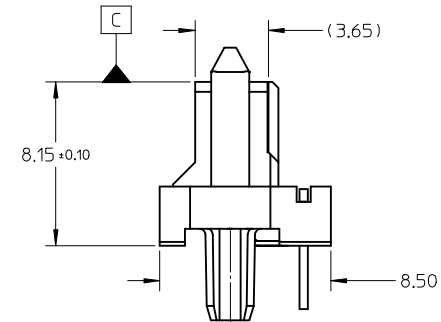
Address: A1208, Overseas Decoration Building, #122 Zhenhua RD., Futian, Shenzhen, China





NOTES:

1. MATERIAL: LIQUID CRYSTALLINE POLYMER (LCP). GLASS FILLED
UL 94V-0
COLOR: BLACK
TERMINAL: COPPER ALLOY
2. PLATING:
CONTACT: SEE TABLE IN SHEET 3.
SOLDERTAIL: 2.54μ MIN. TIN OVER 1.27 μm MIN. NICKEL UNDERPLATE
3. PRODUCT SPECIFICATION: PS-78715-001
4. PACKAGING SPECIFICATION: SEE TABLE
5. DATE CODE TO BE LOCATED APPROXIMATELY AS SHOWN.
6. PRODUCT IS COMPLIANT TO RoHS DIRECTIVE WITH THE FOLLOWING
BANNED SUBSTANCES - LEAD, MERCURY, CADMIUM, HEXAVALENT CHROMIUM,
POLYBROMINATED BIPHENYLS AND POLYBROMINATED DIPHENYL ETHERS.
7. MOLEX LOGO LOCATED APPROXIMATELY AS SHOWN
8. MATES WITH: SAS 3.0 PLUG, SAS 2.0 PLUG, SATA PLUG
9. ALL DESIGNATED GROUND PINS BY DESIGN ARE A SINGLE RETURN PATH.



ADD NEW P/N		QUALITY SYMBOLS		GENERAL TOLERANCES (UNLESS SPECIFIED)		DIMENSION STYLE		SCALE		DESIGN UNITS		THIRD ANGLE PROJECTION	
EC NO: S2015-0542		F _A =0		mm		MM ONLY		NTS		METRIC		PROJECTION	
2014/12/04		F _G =0		INCH		DRAWN BY		DATE		TITLE			
DRWN: HCGH		F _P =0		4 PLACES ± --- ± ---		CGOH		2011/06/01		SERIAL ATTACH SCSI			
CHKD: JESSIE CHUA				3 PLACES ± --- ± ---		CHECKED BY		DATE		STD HEIGHT BACKPLANE SMT			
APPR: SHONG				2 PLACES ± 0.20 ± ---		SCHEONG		2011/06/10		RECEPTACLE (WITH BLADE)			
				1 PLACE ± --- ± ---		APPROVED BY		DATE		MOLEX MOLEX INCORPORATED			
				ANGULAR ± 3 °		BOKOK		2011/06/10		DOCUMENT NO.			
				DRAFT WHERE APPLICABLE		MATERIAL NO.		SEE TABLE		SD-78715-001			
				MUST REMAIN WITHIN DIMENSIONS		SIZE		THIS DRAWING CONTAINS INFORMATION THAT IS PROPRIETARY TO MOLEX INCORPORATED AND SHOULD NOT BE USED WITHOUT WRITTEN PERMISSION					

