



Chipsmall Limited consists of a professional team with an average of over 10 year of expertise in the distribution of electronic components. Based in Hongkong, we have already established firm and mutual-benefit business relationships with customers from,Europe,America and south Asia,supplying obsolete and hard-to-find components to meet their specific needs.

With the principle of “Quality Parts,Customers Priority,Honest Operation,and Considerate Service”,our business mainly focus on the distribution of electronic components. Line cards we deal with include Microchip,ALPS,ROHM,Xilinx,Pulse,ON,Everlight and Freescale. Main products comprise IC,Modules,Potentiometer,IC Socket,Relay,Connector.Our parts cover such applications as commercial,industrial, and automotives areas.

We are looking forward to setting up business relationship with you and hope to provide you with the best service and solution. Let us make a better world for our industry!



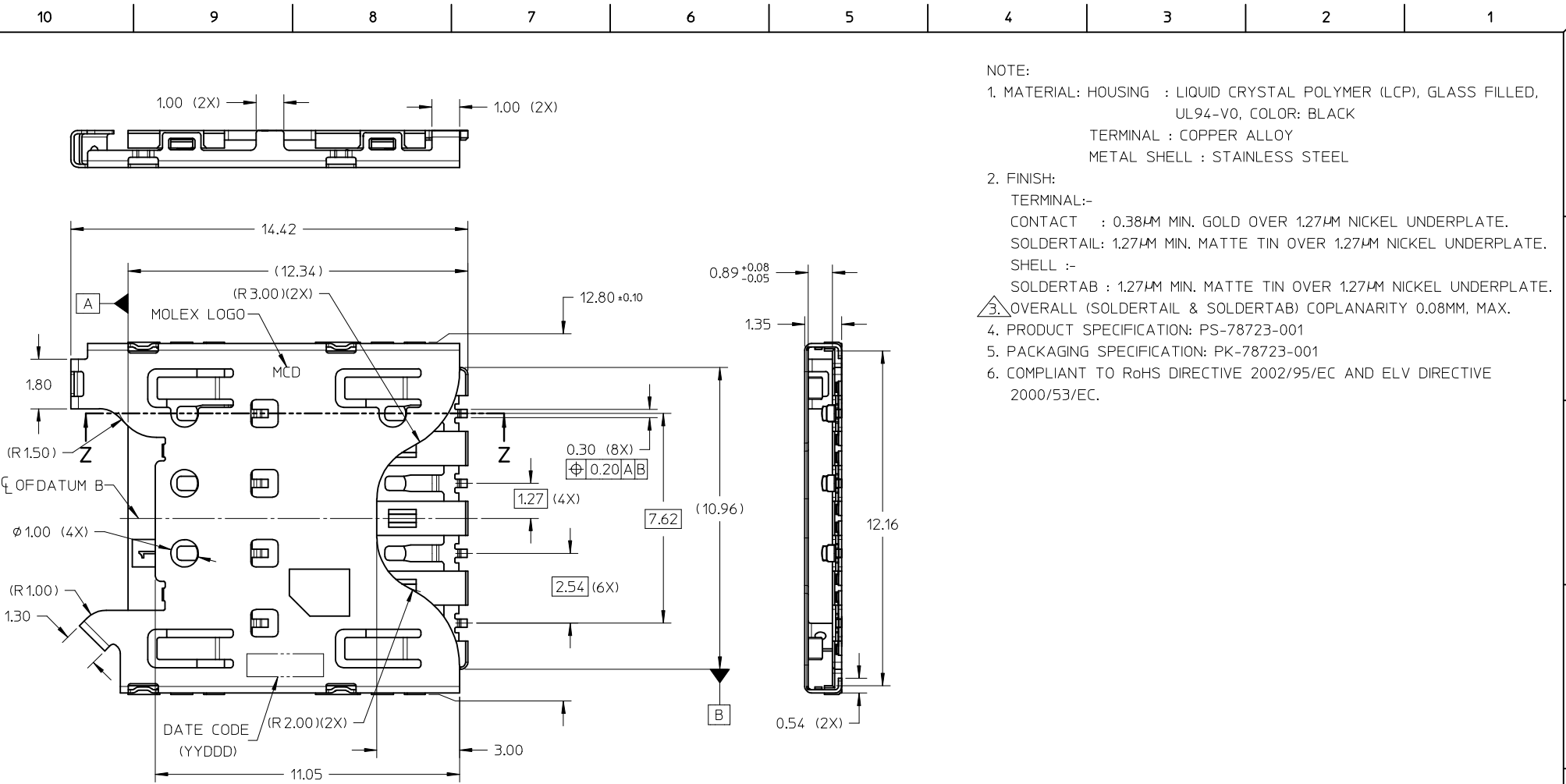
## Contact us

Tel: +86-755-8981 8866 Fax: +86-755-8427 6832

Email & Skype: info@chipsmall.com Web: www.chipsmall.com

Address: A1208, Overseas Decoration Building, #122 Zhenhua RD., Futian, Shenzhen, China





NOTE:

- MATERIAL: HOUSING : LIQUID CRYSTAL POLYMER (LCP), GLASS FILLED, UL94-V0, COLOR: BLACK  
 TERMINAL : COPPER ALLOY  
 METAL SHELL : STAINLESS STEEL
- FINISH:  
 TERMINAL:-  
 CONTACT : 0.38µM MIN. GOLD OVER 1.27µM NICKEL UNDERPLATE.  
 SOLDERTAIL: 1.27µM MIN. MATTE TIN OVER 1.27µM NICKEL UNDERPLATE.  
 SHELL :-  
 SOLDERTAB : 1.27µM MIN. MATTE TIN OVER 1.27µM NICKEL UNDERPLATE.
- OVERALL (SOLDERTAIL & SOLDERTAB) COPLANARITY 0.08MM, MAX.
- PRODUCT SPECIFICATION: PS-78723-001
- PACKAGING SPECIFICATION: PK-78723-001
- COMPLIANT TO RoHS DIRECTIVE 2002/95/EC AND ELV DIRECTIVE 2000/53/EC.

SECTION Z-Z

<b>NEW RELEASE</b> EC NO: S2013-0008 DRWN: JTAN02 CHKD: FCS00 APPR: KHLIM 2012/07/10 2012/07/17 2012/07/17	QUALITY SYMBOLS $F_A=0$ $F_G=0$ $F_P=0$	GENERAL TOLERANCES (UNLESS SPECIFIED)		DIMENSION STYLE <b>MM ONLY</b>	SCALE <b>NTS</b>	DESIGN UNITS <b>METRIC</b>	THIRD ANGLE PROJECTION	
			mm	INCH	DRAWN BY JTAN02	DATE 2012/07/10	TITLE <b>MICRO SIM CONNECTOR          1.35MM HT, PUSH PULL          WITH SPRING TAB</b>	
		4 PLACES ± --- ± ---			CHECKED BY FCS00	DATE 2012/07/17	<b>molex</b> MOLEX INCORPORATED	
		3 PLACES ± --- ± --- 2 PLACES ± 0.13 ± --- 1 PLACE ± --- ± ---			APPROVED BY KHLIM	DATE 2012/07/17	MATERIAL NO. <b>78723-1001</b>	DOCUMENT NO. <b>SD-78723-002</b>
		DRAFT WHERE APPLICABLE MUST REMAIN WITHIN DIMENSIONS		SIZE <b>A3</b>	THIS DRAWING CONTAINS INFORMATION THAT IS PROPRIETARY TO MOLEX INCORPORATED AND SHOULD NOT BE USED WITHOUT WRITTEN PERMISSION			

