



Chipsmall Limited consists of a professional team with an average of over 10 year of expertise in the distribution of electronic components. Based in Hongkong, we have already established firm and mutual-benefit business relationships with customers from,Europe,America and south Asia,supplying obsolete and hard-to-find components to meet their specific needs.

With the principle of “Quality Parts,Customers Priority,Honest Operation,and Considerate Service”,our business mainly focus on the distribution of electronic components. Line cards we deal with include Microchip,ALPS,ROHM,Xilinx,Pulse,ON,Everlight and Freescale. Main products comprise IC,Modules,Potentiometer,IC Socket,Relay,Connector.Our parts cover such applications as commercial,industrial, and automotives areas.

We are looking forward to setting up business relationship with you and hope to provide you with the best service and solution. Let us make a better world for our industry!



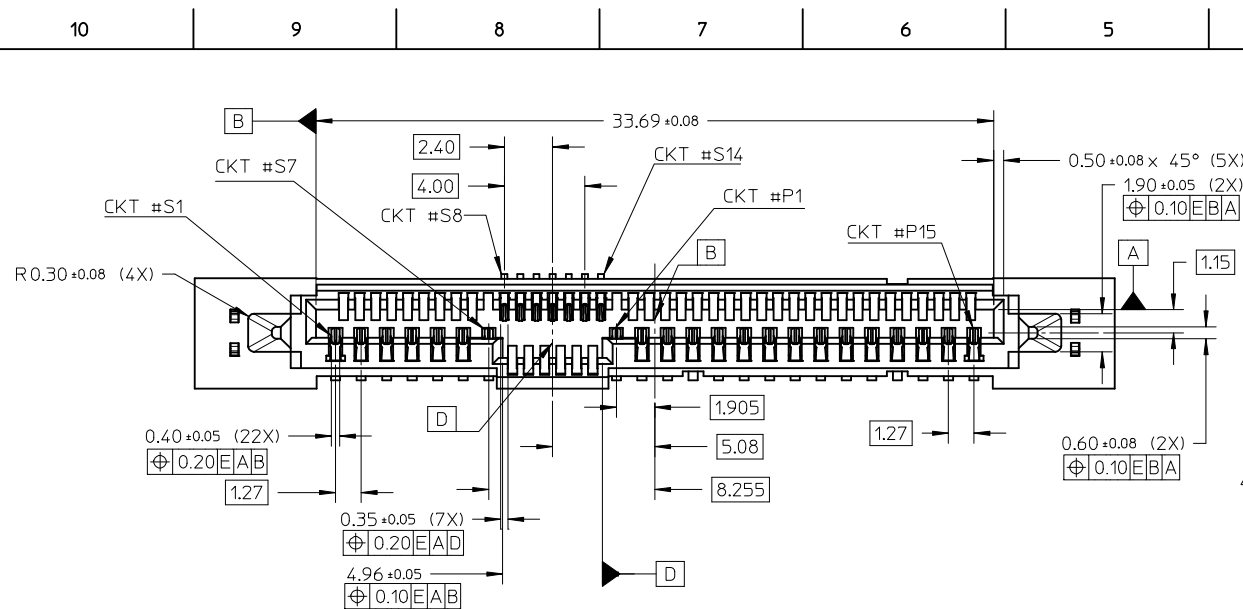
Contact us

Tel: +86-755-8981 8866 Fax: +86-755-8427 6832

Email & Skype: info@chipsmall.com Web: www.chipsmall.com

Address: A1208, Overseas Decoration Building, #122 Zhenhua RD., Futian, Shenzhen, China





NOTES:

1. MATERIALS:

HOUSING: LCP, GLASS FILLED, UL94V-0. COLOR : BLACK
TERMINALS: COPPER ALLOY
SMT TAB: COPPER ALLOY

2. FINISHES:

TERMINAL CONTACT:
0.76μm MIN GOLD ON CONTACTS OVER 1.27μm MIN NICKEL UNDERPLATE.
TERMINAL SOLDER TAIL:
2.54μm MIN TIN OVER 1.27μm MIN NICKEL UNDERPLATE.
SMT TAB:
2.54μm MIN TIN OVER 1.27μm MIN NICKEL UNDERPLATE.

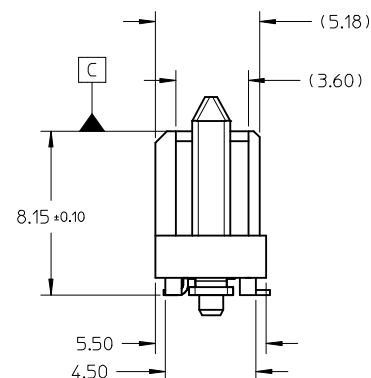
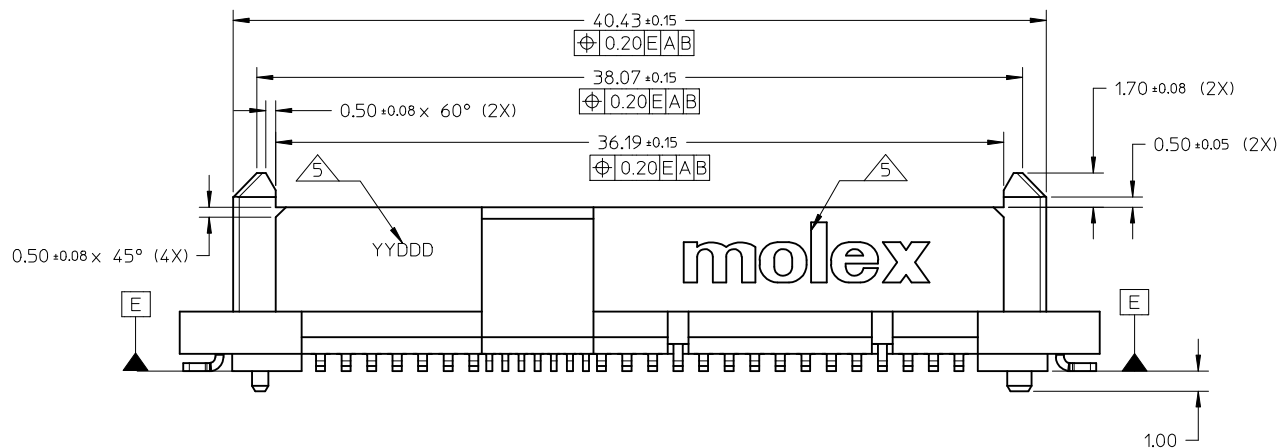
3. PRODUCT SPECIFICATION: PS-78728-001

4. PACKAGING SPECIFICATION: SEE TABLE

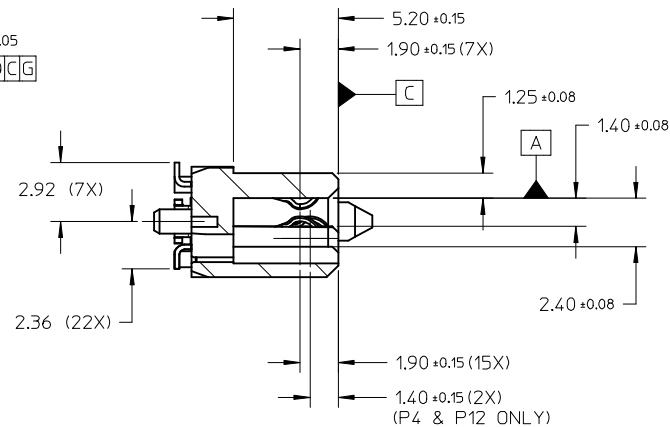
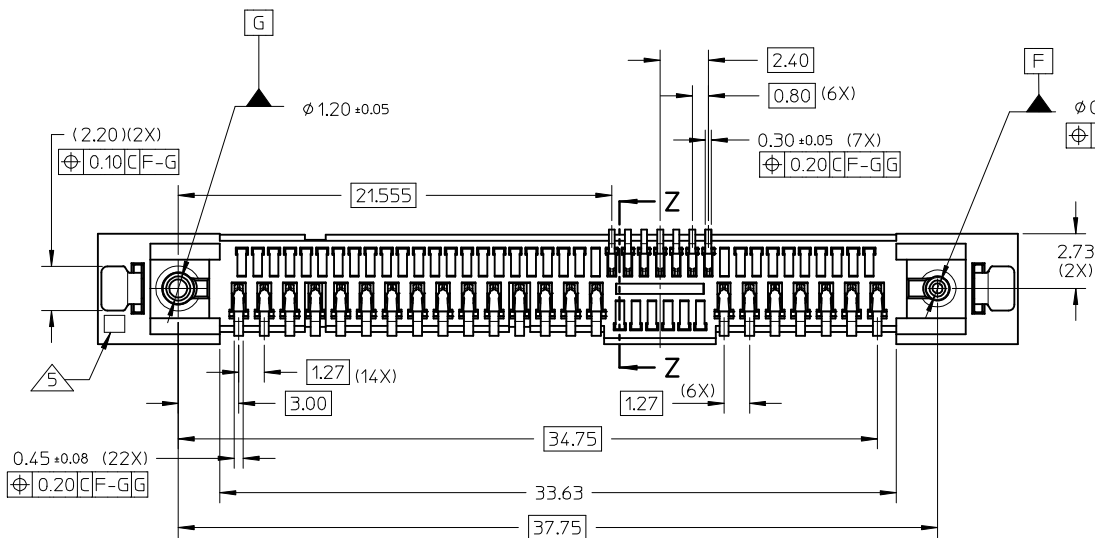
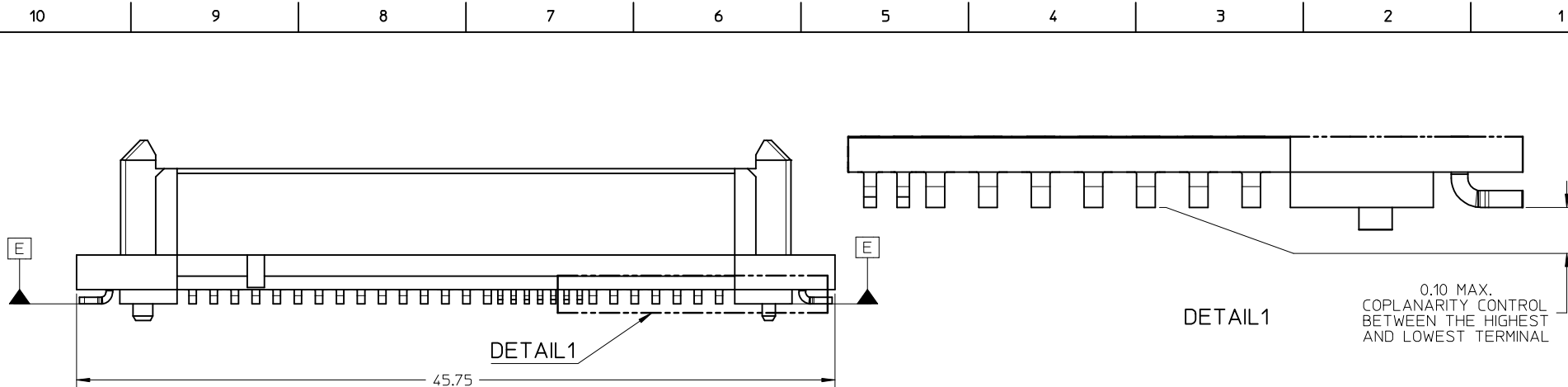
5. MOLEX LOGO, CAVITY ID AND DATE CODE TO BE LOCATED APPROXIMATELY AS SHOWN.

6. NON FUNCTIONAL CORE HOLE MAY VARY

7. PRODUCT IS COMPLIANT TO RoHS DIRECTIVE WITH THE FOLLOWING BANNED SUBSTANCES - LEAD, MERCURY, CADMIUM, HEXAVALENT CHROMIUM, POLYBROMINATED BIPHENYLS AND POLYBROMINATED DIPHENYL ETHERS.
8. REFER TO AS-78728-001 FOR PCB ROUTING RECOMMENDATIONS.

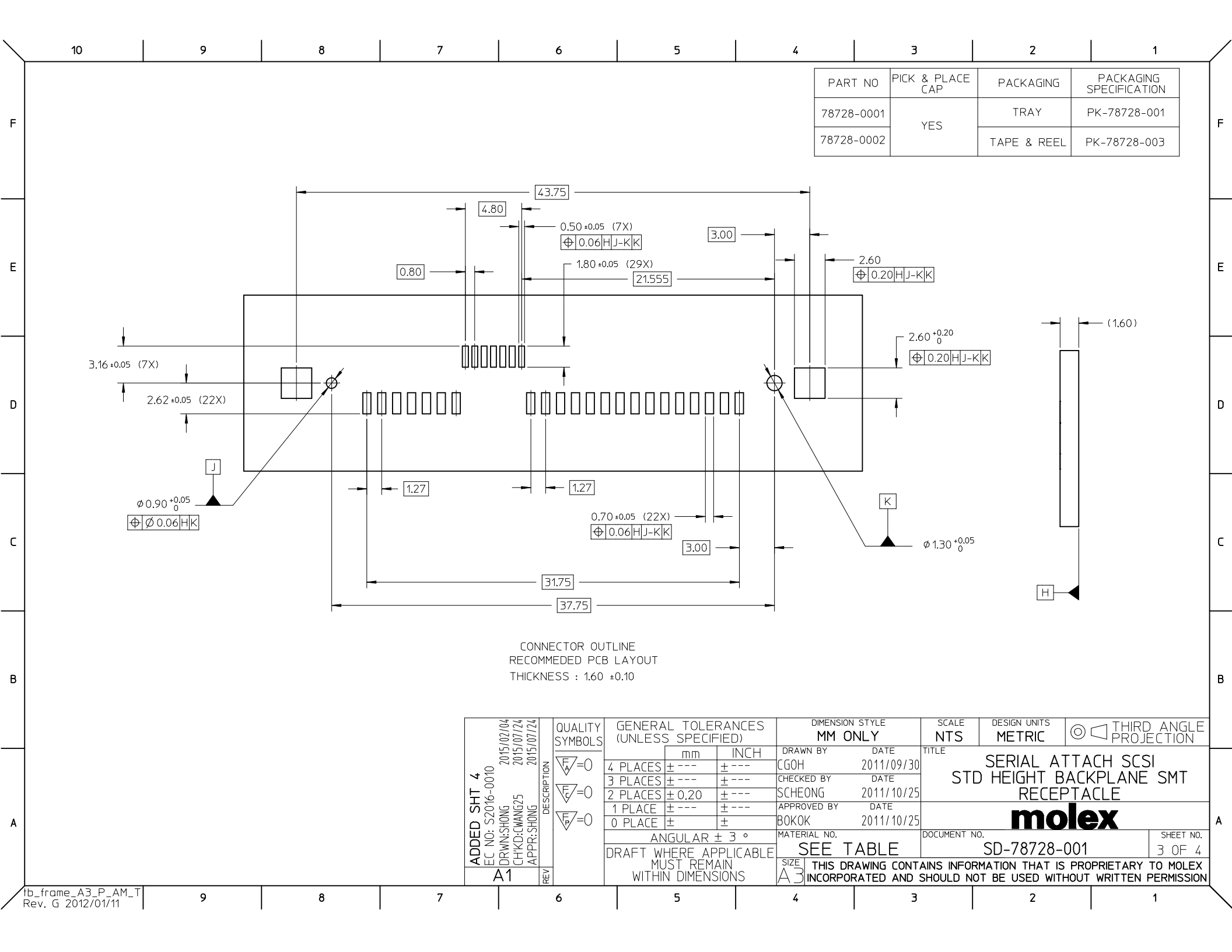


ADDED SHT 4		QUALITY SYMBOLS		GENERAL TOLERANCES (UNLESS SPECIFIED)		DIMENSION STYLE		SCALE		DESIGN UNITS		THIRD ANGLE PROJECTION	
EC NO: S2016-0010		F _A =0		mm		MM ONLY		NTS		METRIC		⊙	
DRWN: SHONG		F _G =0		INCH		DRAWN BY		DATE		TITLE		SERIAL ATTACH SCSI	
CHKD: CWANG25		F _P =0		4 PLACES ± --- ± ---		CGOH		2011/09/30		STD HEIGHT BACKPLANE SMT		RECEPTACLE	
APPR: SHONG				3 PLACES ± --- ± ---		CHECKED BY		DATE		2011/10/25		molex	
				2 PLACES ± 0.20 ± ---		SCHEONG		2011/10/25		DOCUMENT NO.		SD-78728-001	
				1 PLACE ± --- ± ---		APPROVED BY		DATE		2011/10/25		SHEET NO.	
				0 PLACE ± ±		BOKOK		2011/10/25		1 OF 4			
				ANGULAR ± 3 °		MATERIAL NO.		SEE TABLE					
				DRAFT WHERE APPLICABLE		SIZE		THIS DRAWING CONTAINS INFORMATION THAT IS PROPRIETARY TO MOLEX					
				MUST REMAIN		A3		INCORPORATED AND SHOULD NOT BE USED WITHOUT WRITTEN PERMISSION					
				WITHIN DIMENSIONS									



SECTION Z-Z

ADDED SHT 4		QUALITY SYMBOLS		GENERAL TOLERANCES (UNLESS SPECIFIED)		DIMENSION STYLE		SCALE		DESIGN UNITS		THIRD ANGLE PROJECTION	
EC NO: S2016-0010		DESCRIPTION		mm		MM ONLY		NTS		METRIC		TITLE	
2015/02/04		DRWN: SHONG		4 PLACES		DRAWN BY		DATE		SERIAL ATTACH SCSI		SHEET NO.	
2015/07/24		CHKD: CWANG25		3 PLACES		CHECKED BY		DATE		STD HEIGHT BACKPLANE SMT		2 OF 4	
2015/07/24		APPR: SHONG		2 PLACES		SCHEONG		2011/10/25		RECEPTACLE			
				1 PLACE		APPROVED BY		DATE		molex			
				0 PLACE		BOKOK		2011/10/25		DOCUMENT NO.			
						MATERIAL NO.				SD-78728-001			
						SEE TABLE							
						SIZE							
						A3							



10 9 8 7 6 5 4 3 2 1

F

E

D

C

B

A

F

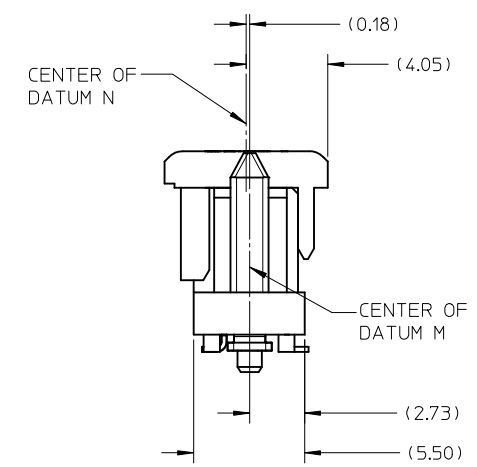
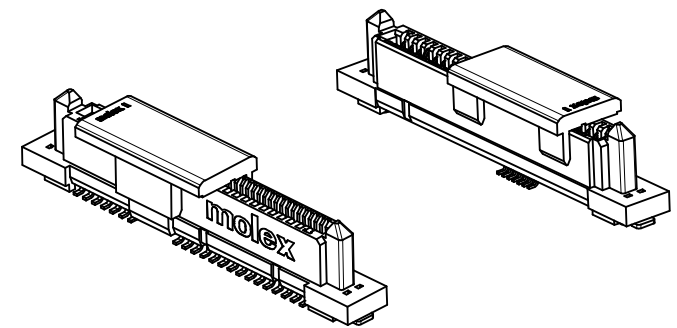
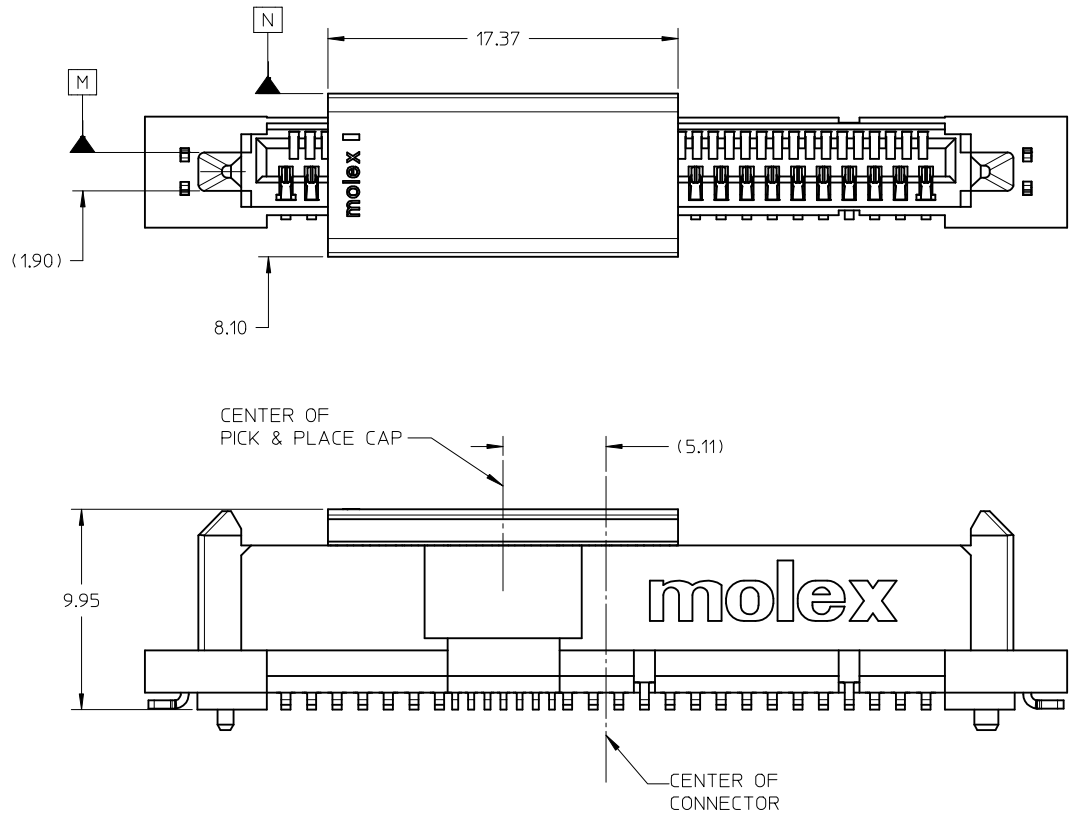
E

D

C

B

A



ADDED SHT 4 EC NO: S2016-0010 DRWN: SHONG CHKD: CWANG25 APPR: SHONG A1	DESCRIPTION REV	QUALITY SYMBOLS <
---	--	--