



Chipsmall Limited consists of a professional team with an average of over 10 year of expertise in the distribution of electronic components. Based in Hongkong, we have already established firm and mutual-benefit business relationships with customers from,Europe,America and south Asia,supplying obsolete and hard-to-find components to meet their specific needs.

With the principle of “Quality Parts,Customers Priority,Honest Operation,and Considerate Service”,our business mainly focus on the distribution of electronic components. Line cards we deal with include Microchip,ALPS,ROHM,Xilinx,Pulse,ON,Everlight and Freescale. Main products comprise IC,Modules,Potentiometer,IC Socket,Relay,Connector.Our parts cover such applications as commercial,industrial, and automotives areas.

We are looking forward to setting up business relationship with you and hope to provide you with the best service and solution. Let us make a better world for our industry!



Contact us

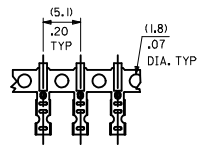
Tel: +86-755-8981 8866 Fax: +86-755-8427 6832

Email & Skype: info@chipsmall.com Web: www.chipsmall.com

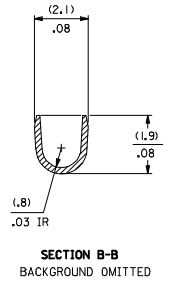
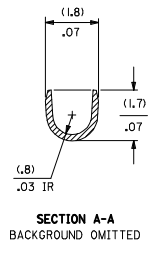
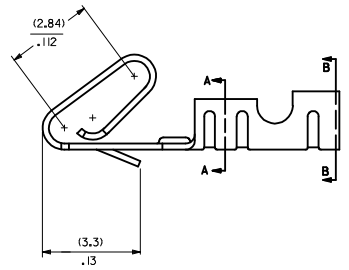
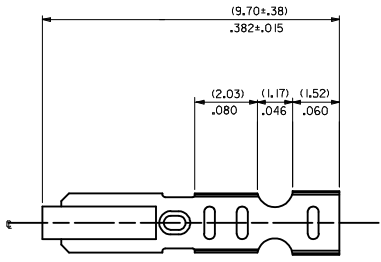
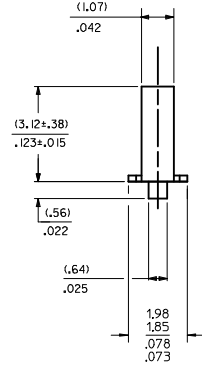
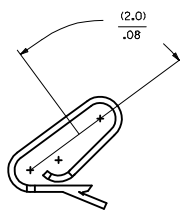
Address: A1208, Overseas Decoration Building, #122 Zhenhua RD., Futian, Shenzhen, China



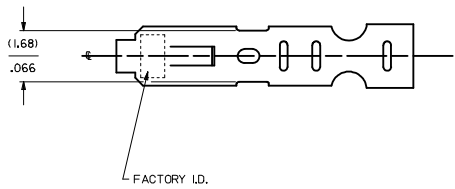
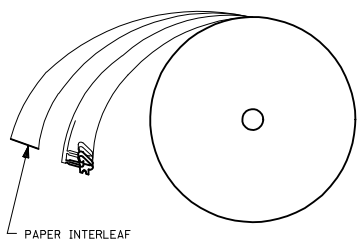
CARRIER VIEW



SELECT GOLD LOCATION



WINDING DETAIL A



NOTES:

1. MATERIAL:
10.201/.008 THICK PHOS BRONZE
2. FINISH:
222 - OVERALL MATTE TIN: (0.00254)/.000100 MIN. TIN OVER (0.00127)/.000050 MIN NICKEL
P909 - OVERALL HOT TIN DIP: (0.00254)/.000100 MIN.
231 - SELECT GOLD: (0.00127)/.000050 MIN.
SELECT MATTE TIN: (0.00254)/.000100 MIN.
OVERALL NICKEL UNDERPLATE: (0.00127)/.000050 MIN.
550 - SELECT GOLD: (0.00038)/.000015 MIN.
OVERALL GOLD FLASH: (0.00005)/.000002 MIN.
OVERALL NICKEL UNDERPLATE: (0.00076)/.000030 MIN.
555- SELECT GOLD (0.00038)/.000015 MIN.
OVERALL NICKEL UNDERPLATE: (0.00076)/.000030
558 - SELECT GOLD: (0.00076)/.000030 MIN.
OVERALL GOLD FLASH: (0.00005)/.000002 MIN.
OVERALL NICKEL UNDERPLATE: (0.00127)/.000050 MIN.
561- SELECT GOLD (0.00076)/.000030 MIN.
OVERALL NICKEL UNDERPLATE: (0.00127)/.000050
3. PRODUCT SPEC: PS-10-07
4. PACKAGING SPECIFICATION: LOOSE TERMINALS: PER PK-2759-001
CHAIN FORM TERMINALS: PER PK-6459-001
5. CRIMP IS FOR 22-30 GA WIRE WITH (1.57)/.062 DIA INSULATION MAX.
6. INSERTION FORCE OF TERMINAL INTO (2.54)/.100 CENTERLINE CONNECTOR IS 2.5 LBS. MAX
7. TERMINAL RETENTION IN HOUSING IS 26.7N / 6LBS MIN. WHEN PULLED AT THE RATE OF (125.4MM)/ 1 INCH PER MINUTE.
8. DIMENSIONS GIVEN ACROSS CENTERLINES ARE SYMMETRICAL ABOUT THOSE CENTERLINES WITHIN HALF THE TOTAL TOLERANCE.
9. THIS PART CONFORMS TO CLASS B REQUIREMENTS OF COSMETIC SPECIFICATION PS-45499-002

6459-(****)*
FORM
L=LOOSE
A=CHAIN PER DETAIL A

PLATING
SEE NOTE 2

ADD PK-6459-001 EC NO: UCP2014-0151 DRAWN BY: DRWN:KIPPER 2013/07/18 CHKD:ANDERSON 2013/07/18 APPR:FSM TH 2013/07/24 REV:	QUALITY SYMBOLS	GENERAL TOLERANCES (UNLESS SPECIFIED)	DIMENSION STYLE	SCALE	DESIGN UNITS	THIRD ANGLE PROJECTION
	▽=0	4 PLACES ± --- ± ---	MM/IN	DRAWN BY DATE	INCH	☉
	▽=0	3 PLACES ± --- ± .010		SAMIEC 01/21/92		
	▽=0	2 PLACES ± 0.25 ± .014		CHECKED BY DATE		
		1 PLACE ± 0.36 ± ---		PATEL 01/21/92		
		0 PLACE ± --- ± ---		APPROVED BY DATE		
		ANGULAR ±1/2°		FSMITH 2012/03/20		
		DRAFT WHERE APPLICABLE MUST REMAIN WITHIN DIMENSIONS		MATERIAL NO.	DOCUMENT NO.	
				SEE CHART	SD-6459	
				molex		
				KK (2.54)/.100 CRIMP TERMINAL, 22-30 GA WIRE SAME AS 2759 EXCEPT MATL		
				1 OF 2		

6459-(***)*

PART NO.	ENG. NO.
08-52-0101	6459-(P909)
08-52-0123	6459-(P909)L
08-65-0801	6459-(561)
	6459-(561)L
08-52-0118	6459-(222)
	6459-(222)L
08-65-0811	6459-(558)
08-65-0812	6459-(558)L
08-65-0815	6459-(555)
08-65-0816	6459-(555)L
08-65-0813	6459-(550)
08-65-0814	6459-(550)L
08-65-0817	6459-(231)
08-65-0818	6459-(231)L

SEE SHEET 1 DEC NO: UCP2014-0151 DRAWN BY: 2013/07/18 CHKD: BANDERSON 2013/07/18 APPR: FSMITH 2013/07/24 REV:	QUALITY SYMBOLS ▽=0 ▽=0 ▽=0	GENERAL TOLERANCES (UNLESS SPECIFIED) mm INCH 4 PLACES ±.001 ±.001 3 PLACES ±.002 ±.010 2 PLACES ±0.25 ±.014 1 PLACE ±0.36 ±.014 0 PLACE ±.001 ±.001 ANGULAR ±1/2° DRAFT WHERE APPLICABLE MUST REMAIN WITHIN DIMENSIONS	DIMENSION STYLE MM/IN DRAWN BY: DATE SAMIEC 01/21/192 CHECKED BY: DATE PATEL 01/21/192 APPROVED BY: DATE FSMITH 2012/03/20	SCALE 1:1 DESIGN UNITS INCH THIRD ANGLE PROJECTION	TITLE KK (2.54)/.100 CRIMP TERMINAL, 22-30 GA WIRE SAME AS 2759 EXCEPT MATL molex MATERIAL NO. SD-6459 DOCUMENT NO.	SHEET NO. 2 OF 2
	SEE CHART			THIS DRAWING CONTAINS INFORMATION THAT IS PROPRIETARY TO MOLEX INCORPORATED AND SHOULD NOT BE USED WITHOUT WRITTEN PERMISSION		
	SIZE D			THIS DRAWING CONTAINS INFORMATION THAT IS PROPRIETARY TO MOLEX INCORPORATED AND SHOULD NOT BE USED WITHOUT WRITTEN PERMISSION		
	DRAFT WHERE APPLICABLE MUST REMAIN WITHIN DIMENSIONS			THIS DRAWING CONTAINS INFORMATION THAT IS PROPRIETARY TO MOLEX INCORPORATED AND SHOULD NOT BE USED WITHOUT WRITTEN PERMISSION		